

Y701



Y701

SPECIFICATION.



Asking price
EUR 79,750,000 (EU VAT paid)



Built
2007, Oceanco, The Netherlands



Length
80m (262.5ft)



Beam
14.2m (46.6ft)



Draft
3.9m (12.8ft)



Gross tonnage
2,310



Cruising speed
18 knots



Maximum speed
20 knots



Range
6,000 nm



Flag
Marshall Islands



Lying
West Mediterranean



Class
LR +100 A1 SSC Yacht (P) MONO G6 +LMC UMS,
MCA



Exterior designer
Nuvolari & Lenard



Interior designer
Alberto Pinto



Construction
Hull - Steel, Superstructure - Aluminium, Deck -
Teak



Crew
24



Guests
18



Cabins
9 (7 x double, 2 x twin)



Engines
2 x 4,860hp MTU



Propulsion
Twin screw diesel yacht

Note

Not available for sale to US residents while in US waters.

[View yacht on website](#)



Y701



BURGESS

Discover the difference.
burgessyachts.com



Y701



Y701



Y701



Y701



Y701



Y701



Y701



Y701



BURGESS

Discover the difference.
burgessyachts.com



Y701



BURGESS

Discover the difference.
burgessyachts.com



Y701

OVERVIEW.

Commissioned by a very experienced, highly discerning owner, the 80m (262.5ft) Y701 oozes ShowBoats award-winning class and ticks every box for those searching for a yacht of immaculate pedigree that has it all.

She has a steel hull and aluminium superstructure built to Lloyd's classification and MCA compliance by Dutch heavyweight Oceanco. Delivered in 2007, her elegantly angular exterior, by Italian studio Nuvolari & Lenard, conceals a considerable internal volume of 2,310GT designed by Paris-based stylist Alberto Pinto. As a beloved family yacht, she has been meticulously maintained and upgraded and presents in wonderful condition.

Expansive deck spaces include a sun deck with glass-backed pool and sunpads forward, dayhead with shower, skylights over the elevator serving bridge to lower decks and lounge seating aft. The bridge deck aft is a versatile space where there is a sun lounge with chef station and sit-up bar as well as open-air dining shaded by the overhang. Walkaround sidedecks enhance guests' connection with their surroundings.

The upper deck has a VIP cabin, with en suite. A central staircase runs to the main deck aft where internal steps either side lead down to the swim platform, shower, dayhead and dressing room. The main deck is also walkaround and guests moving forward pass the boat deck where two 9.5m (31.2ft) tenders are launched on horizontal davits. There is also a full-beam tender and toy garage aft on the lower deck.

The bridge deck sky lounge has light wood panelling with marquetry and relaxed sofa seating. The upper deck is an entertainment space with convivial lounge seating and a piano in the lounge and a circular dining table for 20 guests with stunning views through a semi-circle of sliding glass doors, opening onto the upper deck aft.

On the main deck there is a wellness spa featuring a gym with spectacular views aft through a semi-circle of sliding glass doors, buffet and bar, medical room, beauty salon, massage room and dayhead. An enormous main saloon features a variety of seating areas and doubles as a cinema with drop-down projector.

She welcomes up to 18 guests in nine suites. The owner's suite takes up almost half of the upper deck's interior. It features a private owner's lounge with office, his-and-hers bathroom around a huge central bath, very large walk-in wardrobe and a bedroom with access to a Portuguese bridge and private terrace with two jacuzzis. The main deck has three VIP suites and two twin suites, and there are a further two double suites on the lower deck forward of the lobby, which has its own sea terrace. She also sleeps 22 crew.

Twin 4,860hp MTU diesel engines give her a top speed of 20 knots, a cruising speed of 18 knots and a transatlantic range of 6,000nm at her passage speed of 14 knots. Retractable Rolls-Royce stabilisers provide comfort at anchor and underway.

Key features

Northern-European pedigree

Vast owner's suite and a further eight cabins accommodating a total of 18 guests

Large sun deck with pool and swimming jets

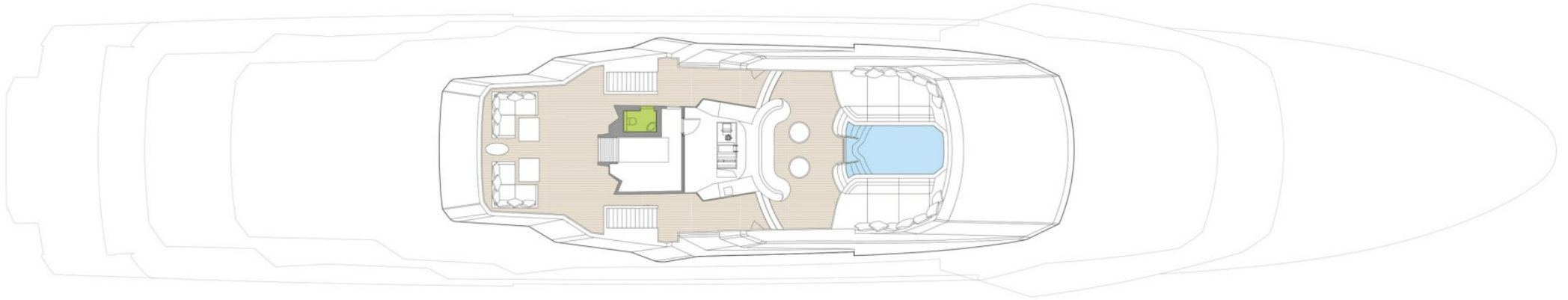
Top speed of 20 knots

Large tender and toy garage

Considerable internal volume of 2,310GT designed by Paris-based stylist Alberto Pinto

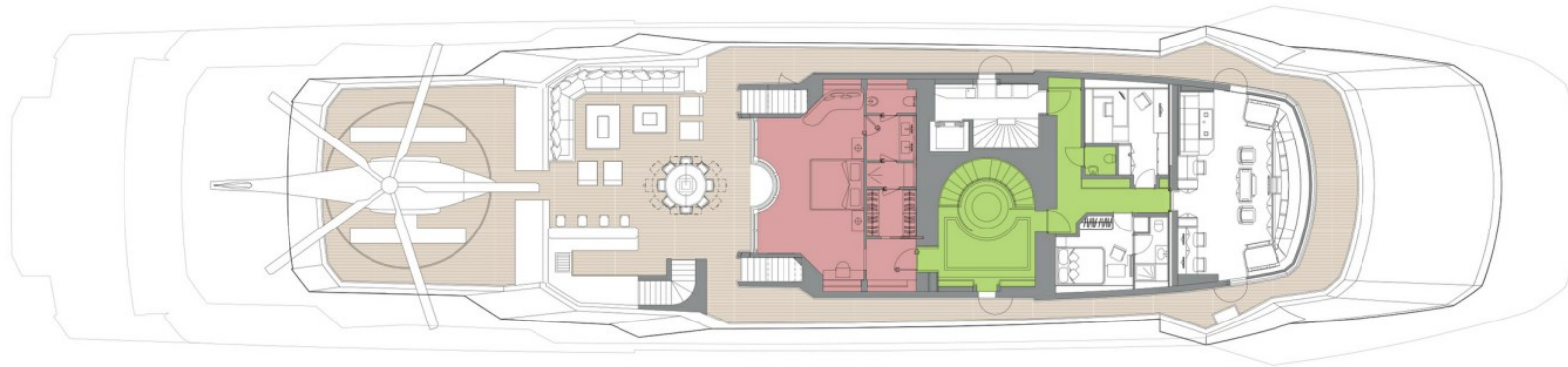
Guest elevator

SUN DECK



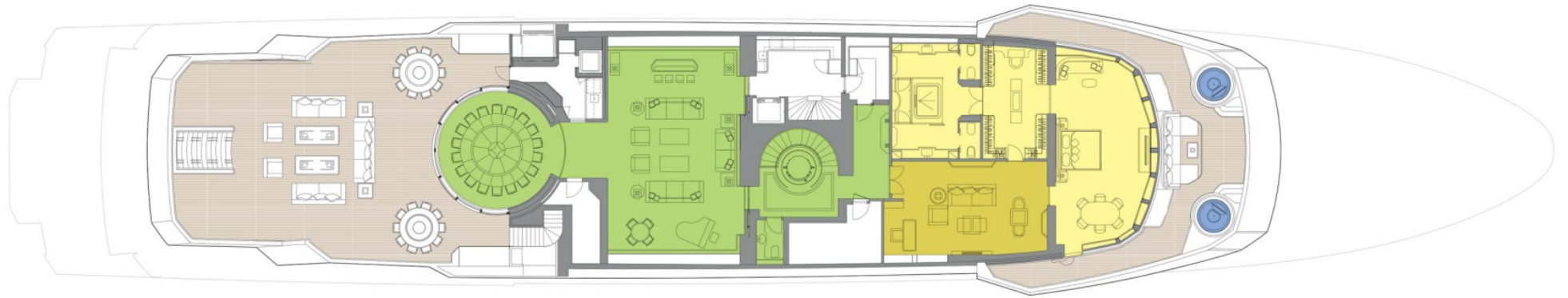
- GUEST AREAS
- OWNER'S SUITE
- VIP SUITES
- GUEST CABINS
- OWNER'S OFFICE
- MEDICAL ROOM
- GYM
- MASSAGE SUITE
- BEAUTY SALON
- JACUZZI
- POOL

BRIDGE DECK



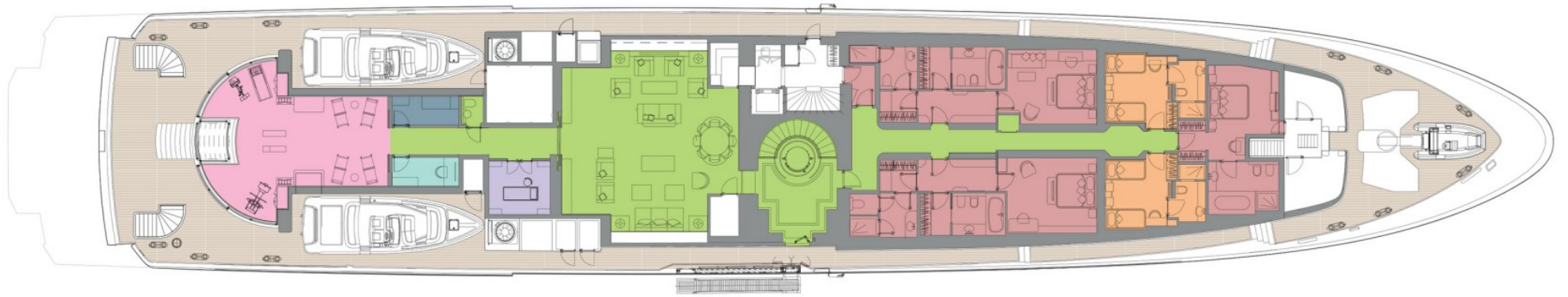
- GUEST AREAS
- OWNER'S SUITE
- VIP SUITES
- GUEST CABINS
- OWNER'S OFFICE
- MEDICAL ROOM
- GYM
- MASSAGE SUITE
- BEAUTY SALON
- JACUZZI
- POOL

UPPER DECK



- GUEST AREAS
- OWNER'S SUITE
- VIP SUITES
- GUEST CABINS
- OWNER'S OFFICE
- MEDICAL ROOM
- GYM
- MASSAGE SUITE
- BEAUTY SALON
- JACUZZI
- POOL

MAIN DECK



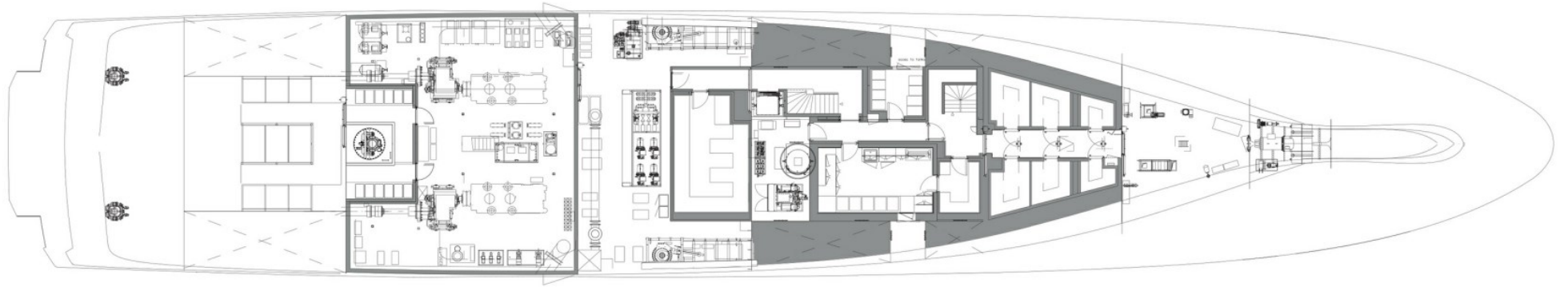
- GUEST AREAS
- OWNER'S SUITE
- VIP SUITES
- GUEST CABINS
- OWNER'S OFFICE
- MEDICAL ROOM
- GYM
- MASSAGE SUITE
- BEAUTY SALON
- JACUZZI
- POOL

LOWER DECK



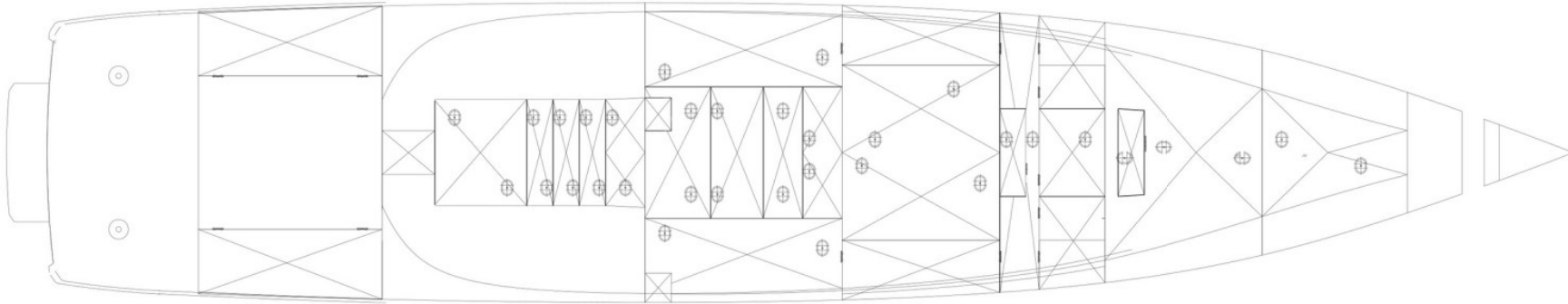
- GUEST AREAS
- OWNER'S SUITE
- VIP SUITES
- GUEST CABINS
- OWNER'S OFFICE
- MEDICAL ROOM
- GYM
- MASSAGE SUITE
- BEAUTY SALON
- JACUZZI
- POOL

BOTTOM DECK



- GUEST AREAS
- OWNER'S SUITE
- VIP SUITES
- GUEST CABINS
- OWNER'S OFFICE
- MEDICAL ROOM
- GYM
- MASSAGE SUITE
- BEAUTY SALON
- JACUZZI
- POOL

TANK TOP



- GUEST AREAS
- OWNER'S SUITE
- VIP SUITES
- GUEST CABINS
- OWNER'S OFFICE
- MEDICAL ROOM
- GYM
- MASSAGE SUITE
- BEAUTY SALON
- JACUZZI
- POOL

BURGESS

WORLD CLASS. WORLD WIDE.

| | | | | | | | |
|----------------------------|----------------------------|-----------------------------|-----------------------------|----------------------------|----------------------------------|---------------------------|----------------------------|
| London +44 20 7766 4300 | Monaco +377 97 97 81 21 | New York +1 212 223 0410 | Miami +1 305 672 0150 | Singapore +65 9665 8990 | Beverly Hills +1 310 424 5112 | Palma +34 971 495 413 | Athens +30 210 967 1661 |
| | Dubai +971 4 425 5874 | Phuket +66 7623 9739 | Hong Kong +852 6496 2094 | Tokyo +81 46 738 8612 | Sydney +61 499 945 557 | Mumbai +91 98211 67253 | |

Advertising of these vessel(s) in printed publications, on the internet or in any other medium is not permitted without prior written permission from Burgess. All particulars are given in good faith and are believed correct but they cannot be guaranteed.

Last updated: 20 March 2024