

XWAVE



XWAVE

SPECIFICATIONS.



Prix demandé
USD 7 995 000 (US duty paid)



Chantier
2019, Sanlorenzo, Italy



Longueur
32,2m



Largeur
7m



Tirant d'eau
2m



Tonnage brut
199



Vitesse de croisière
24 knots



Vitesse maximale
26 knots



Autonomie
1 000 nm



Pavillon
USA



Position
West Mediterranean



Classe
RINA Services S.p.A. (RINA)



Designer extérieur
Francesco Paszkowski Design



Designer d'intérieur
Marty Lowe



Construction
**Hull - Composite, Superstructure - Composite,
Deck - Teak**



Équipage
5



Invités
10



Cabines
5 (3 × double, 1 × double/twin, 1 × twin)



Moteurs
2 × 2 400hp MTU



Propulsion
Twin screw diesel yacht

[Voir le yacht sur le site](#)



XWAVE

Main deck lounge



Main deck lounge



Main deck lounge



Main deck dining area



XWAVE

Master cabin



Master cabin



Master cabin dressing area



Master cabin en suite bathroom



XWAVE

Lower deck foyer



Guest cabin



Guest cabin en suite bathroom



Guest cabin



XWAVE

Guest cabin en suite bathroom



Guest cabin



Guest cabin en suite bathroom



Guest twin cabin



XWAVE

Guest cabin en suite bathroom



Galley



Engine room



Bridge



BURGESS

Discover the difference.
burgessyachts.com



XWAVE

Fly bridge helm station



Fly bridge dining area



Fly bridge aft



Fly bridge aft



XWAVE

Main deck aft



Main deck aft



Port side



Bow seating area



XWAVE

Swim platform



Cruising



Cruising



Cruising



BURGESS

Discover the difference.
burgessyachts.com



XWAVE

Cruising



BURGESS

Discover the difference.
burgessyachts.com



XWAVE

APERÇU.

Delivered in 2019 by the world-renowned Italian shipyard Sanlorenzo, XWAVE is a 32.2m (105.6ft) motor yacht built of composite to RINA classification. This SL106 features a sleek exterior design by Francesco Paszkowski and a contemporary interior by Marty Lowe. Having been only privately used, XWAVE has been well maintained by her original owner who is an experienced yachtsman, and she presents in immaculate condition.

XWAVE's contemporary interior design features teak flooring, light woodwork and soft goods, and pops of colour throughout. The main saloon has an open layout with a large lounging area with bar aft and a dining area forward. This entertaining space is surrounded by large picture windows and there is a fold-down balcony through full-height sliding glass doors on the port side.

With accommodation for 10 guests in five cabins, XWAVE features a full-beam owner's suite on the main deck and four additional guest cabins on the lower deck. Surrounded by 180-degree, forward-facing windows, the owner's suite, entered on the port side, provides the ultimate retreat with an en suite bathroom, dressing area, and office space. Four well appointed and versatile guest cabins can be found on the lower deck consisting of two double cabins, one twin cabin and one convertible cabin, all with private en suite bathrooms.

XWAVE's exterior decks provide a mix of luxury living and outdoor entertainment. The vast fly bridge is a highlight. This adaptable space features a sun lounging area aft, with a covered al fresco dining area and wet bar forward. The main deck aft hosts another al fresco dining area or can be used as a lounging area for sea-level living. The swim platform provides easy access for watersports and is connected to the transom tender garage, which houses a 4.5m (14.8ft) tender and a jetski.

Powered by twin 2,400hp MTU diesel engines, XWAVE features an impressive maximum speed of 28 knots, with a cruising speed of 24 knots. A fin stabilization system provides the ultimate comfort underway and at anchor.

Principales caractéristiques

Warm and contemporary interior design by Marty Lowe

Accommodation for 10 guests in five spacious cabins

Full-beam master cabin with 180-degree, forward-facing views

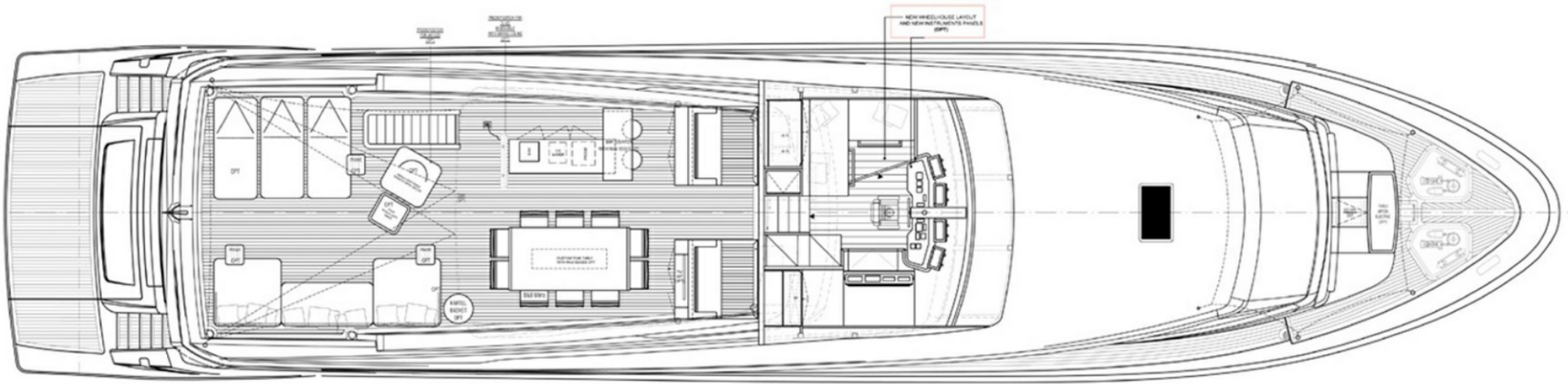
Spacious flybridge with helm station, al fresco dining, wet bar, and sun loungers

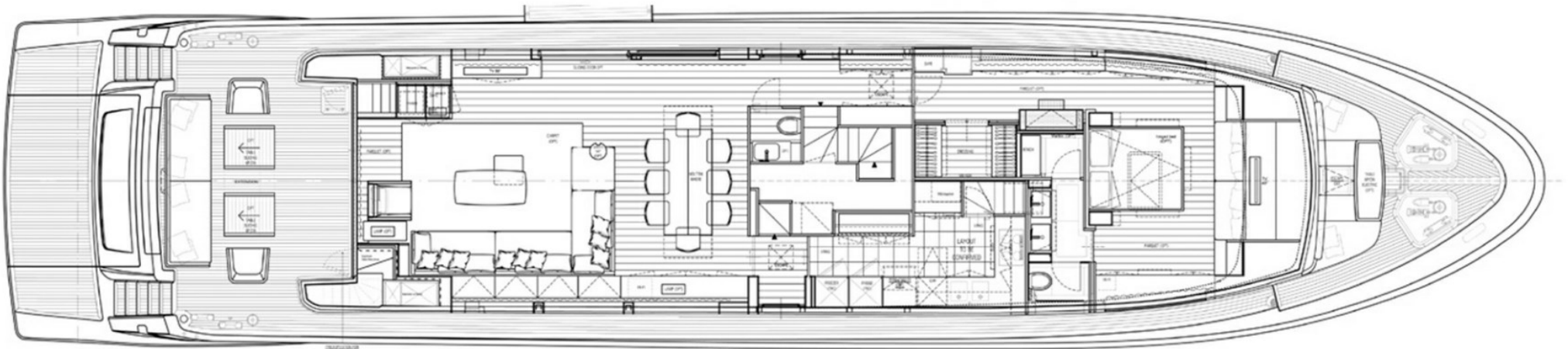
Immaculately maintained by original owner and only private use

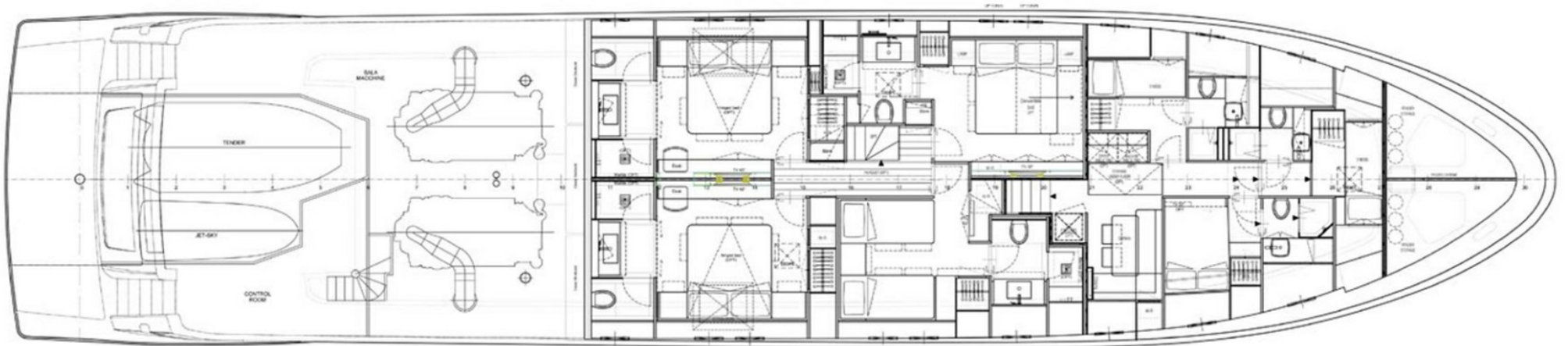
Annexes

Williams SportJet 435









BURGESS

WORLD CLASS. WORLD WIDE.

London +44 20 7766 4300	Monaco +377 97 97 81 21	New York +1 212 223 0410	Miami +1 305 672 0150	Singapore +65 9665 8990	Beverly Hills +1 310 424 5112	Palma +34 971 495 413	Athens +30 210 967 1661
Dubai +971 4 425 5874	Phuket +66 7623 9739	Hong Kong +852 6496 2094	Tokyo +81 46 738 8612	Sydney +61 499 945 557	Mumbai +91 98211 67253	Shanghai +86 187 0898 6800	Rio de Janeiro +55 21 2553-3238
Aspen +1 970 710 2294							

La publicité de ce(s) navire(s) dans des publications imprimées, sur Internet ou sur tout autre support n'est pas autorisée sans l'autorisation écrite préalable de Burgess.
Toutes les informations sont données de bonne foi et sont considérées comme exactes, mais elles ne peuvent être garanties.

Dernière mise à jour : 26 février 2025