

W



W

APERÇU.

W is the consummate pedigree charter yacht, with a passionate, experienced crew and all the amenities you could dream of to make your stay onboard out of this world. From her showstopping sun deck to the contemporary elegance of her interiors to the fun variety watertoys on board, this is chartering at the highest level.

Enjoy the sanctuary of a morning cappuccino on the master suite's private balcony before you take the elevator to the sun deck for breakfast. The tender garage is brimming with toys and equipment to keep even the most energetic guests entertained, including jetskis, kayaks, paddleboards, SeaBobs and Laser dinghies; there is even an inflatable wall and slide to challenge the most competitive in your group. W's 11.5m Boston Whaler tender sports four powerful outboard engines to provide a fast and fun experience on the water, whether you are touring the coastline, looking to hook a prize catch or visiting nearby port towns.

If you prefer a leisurely morning pace, curl up with a great book in the bright and cosy lounge before a workout on the yacht's exercise equipment. W's modern interior blends a variety of wood tones, cream furnishings and richly coloured accents to provide a relaxing and elegant ambiance. The yacht is as stunning as the day she was delivered by Feadship, thanks to an extensive refit in 2020 that included new entertainment systems, light decor updates and a slick grey hull colour.

Lunch is served on at the sun deck's expansive, shaded dining table with winning panoramic views. There is no better place to spend the afternoon than on W's 21m sun deck, moving between the comfortable sunloungers, refreshing jacuzzi and shaded bar for a light bite. Alternatively, head to the sky lounge to watch a sports match at the sit-up bar with service provided by the attentive crew.

W sleeps up to 12 guests in five cabins including an expansive master suite with a private lounge, balcony and a walk-in wardrobe with dressing room. Two VIP suites and two convertible twin cabins complete the guest accommodation, while stabilisers guarantee a smooth experience on board.

As the sun sinks past the horizon, it's celebration time. W's fun, friendly crew are full of inspiration for theme nights and special occasions; after bespoke cocktails and canapes on the main deck aft, enjoy a sheltered al fresco dinner in the bridge deck's inside-outside dining space and toast your day's adventures.

Principales caractéristiques

Private master balcony

Flexible cabin configurations

Exercise equipment

11.6m Targa Protector tender (2022)

Jacuzzi on the sun deck

Zero speed stabilisers to reduce any rolling motion while at anchor

W

Aerial view



Sun deck



Sun deck



Sun deck dining area



W

Sun deck



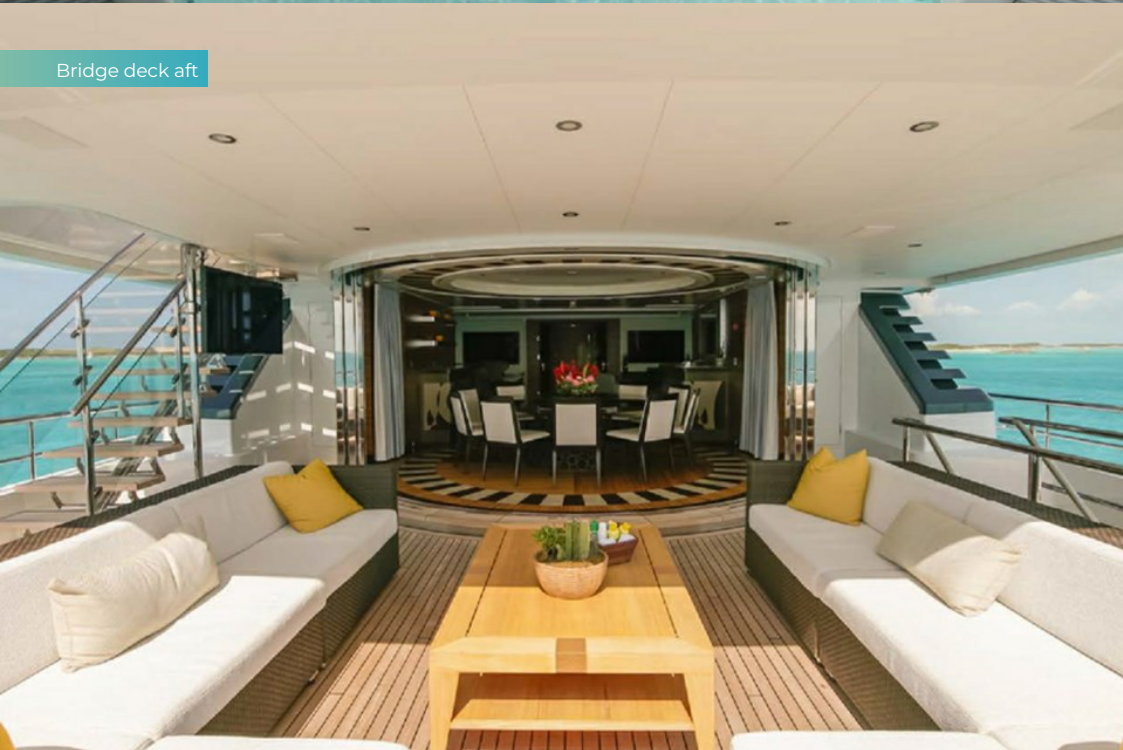
Sun deck jacuzzi



Sun deck



Bridge deck aft



W

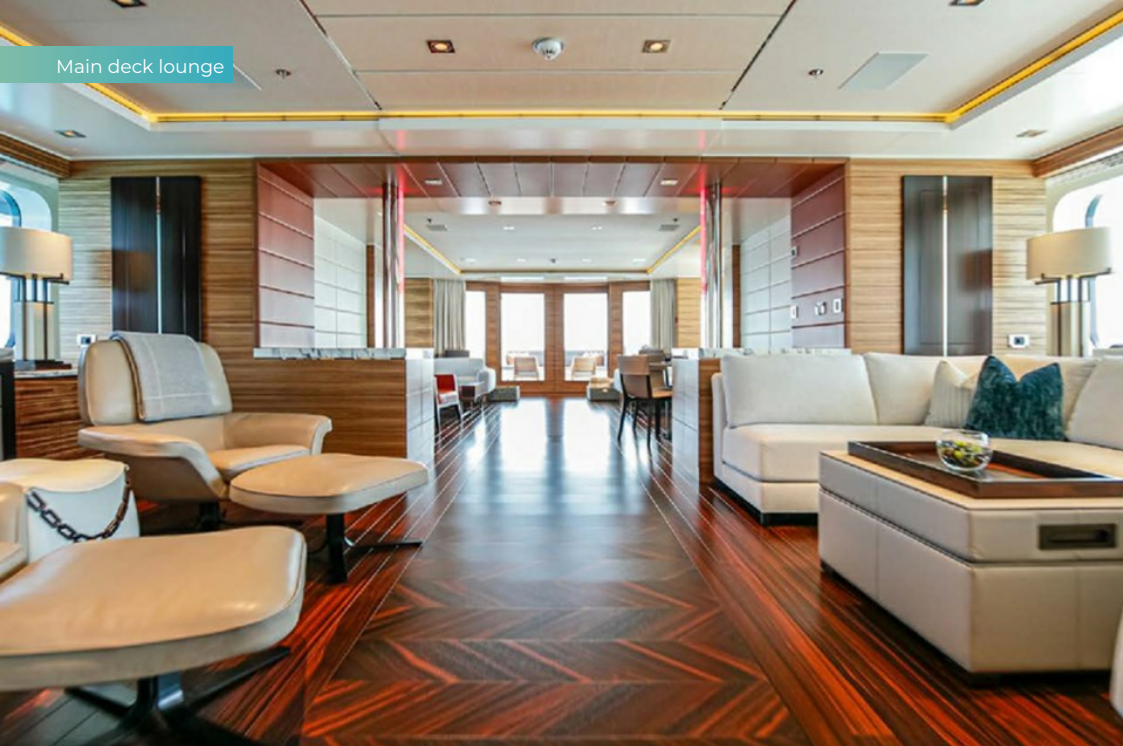
Bridge deck aft



Main deck aft



Main deck lounge



Main deck lounge



W

Bridge deck dining area



Bridge deck dining area



Sky lounge



Main deck master cabin



W

Master bathroom en suite



Lower deck convertible double/twin cabin



Lower deck double cabin



At anchor



W

Cruising



BURGESS

Discover the difference.
burgessyachts.com



W

SPECIFICATIONS.



Longueur
57,6m



Chantier
2013 (refitted 2020), Feadship, De Vries, The Netherlands



Designer d'intérieur
Bannenberg & Rowell Design



Largeur
10,6m



Tirant d'eau
3,3m



Tonnage brut
941



Vitesse de croisière
16 knots



Vitesse maximale
20 knots



Consommation de carburant en vitesse de croisière
288 litres par heure



Invités
10

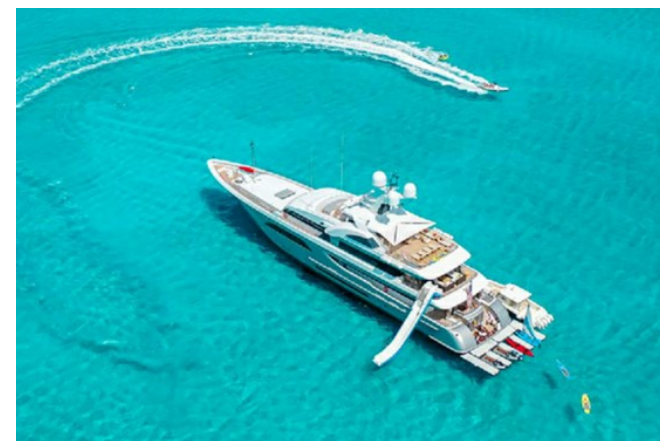


Nb de cabines invités
5 (4 × double, 1 × double/twin)



Équipage
12

[Voir le yacht sur le site](#)
[Regarder la vidéo du yacht](#)



W

ANNEXES & JEUX NAUTIQUES



2 × Tenders



2 × Sailing dinghies



1 × Deck jacuzzi



Waterslide



RYA training centre for jetskis & waverunners



2 × Waverunners



4 × SeaBobs



2 × Flyboards



4 × Kayaks



2 × Stand up paddleboards



Wakeboard



Inflatable tows



Scuba diving equipment



Fishing gear



Snorkelling gear

W

REMISE EN FORME & BIEN-ETRE



Pedal bike

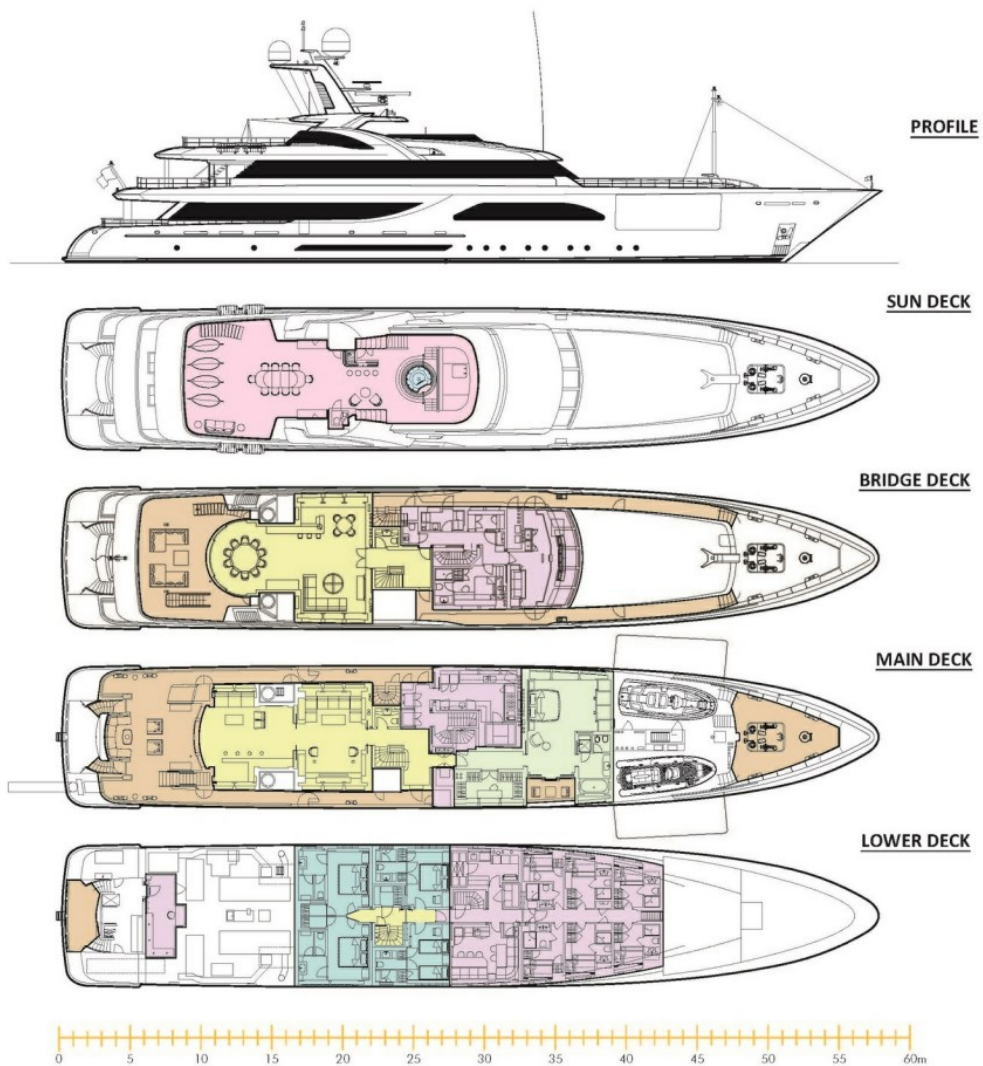


Upright stationary bike



'W'

GENERAL ARRANGEMENT



KEY

- DECK
- GUEST AREAS
- CREW AREAS
- MASTER CABIN
- GUEST CABINS
- SUN DECK

BURGESS

WORLD CLASS. WORLD WIDE.

London +44 20 7766 4300	Monaco +377 97 97 81 21	New York +1 212 223 0410	Miami +1 305 672 0150	Singapore +65 9665 8990	Beverly Hills +1 310 424 5112	Palma +34 971 495 413	Athens +30 210 967 1661
Dubai +971 4 425 5874	Phuket +66 7623 9739	Hong Kong +852 6496 2094	Tokyo +81 46 738 8612	Sydney +61 499 945 557	Mumbai +91 98211 67253	Shanghai +86 187 0898 6800	Rio de Janeiro +55 21 2553-3238
Aspen +1 970 710 2294							

La publicité de ce(s) navire(s) dans des publications imprimées, sur Internet ou sur tout autre support n'est pas autorisée sans l'autorisation écrite préalable de Burgess.
Toutes les informations sont données de bonne foi et sont considérées comme exactes, mais elles ne peuvent être garanties.

Dernière mise à jour : 20 janvier 2025