

WHITE ROSE OF DRACHS



WHITE ROSE OF DRACHS

SPÉCIFICATIONS.



Prix demandé
Price on application



Chantier
2004, Kusch Yachts, Germany



Longueur
65m



Largeur
11,9m



Tirant d'eau
4,7m



Tonnage brut
1 643



Vitesse de croisière
14,5 knots



Vitesse maximale
17 knots



Autonomie
6 000 nm



Pavillon
United Kingdom



Position
West Mediterranean



Classe
Lloyd's Register (LR) ✱ 100A1, SSC, G6, ✱ LMC, UMS



Designer extérieur
Donald Starkey



Designer d'intérieur
Donald Starkey



Construction
Hull - Steel, Superstructure - Aluminium, Deck - Teak



Équipage
17



Invités
14



Cabines
6 (3 × double, 3 × twin, 2 × additional berths)



Moteurs
2 × 3 000hp Deutz



Propulsion
Twin screw diesel yacht

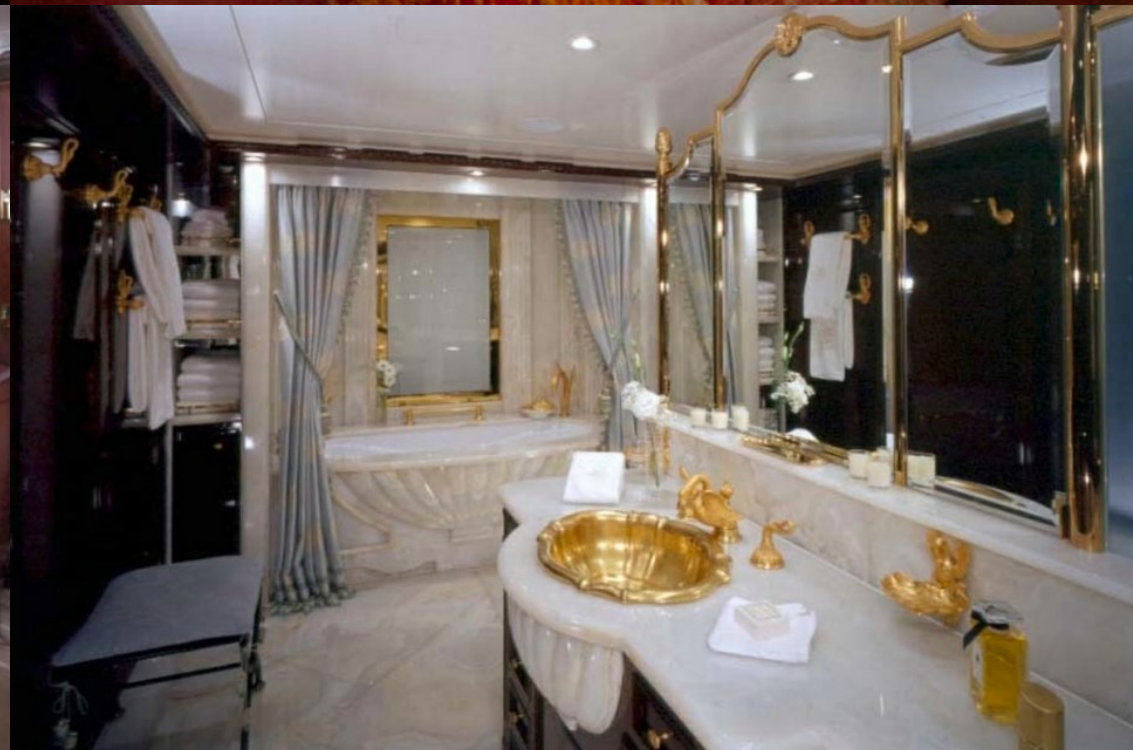
[Voir le yacht sur le site](#)



WHITE ROSE OF DRACHS



WHITE ROSE OF DRACHS



WHITE ROSE OF DRACHS



WHITE ROSE OF DRACHS

APERÇU.

The 65m (213.3ft) WHITE ROSE OF DRACHS was custom built and delivered in 2004 by the highly respected German shipyard Kusch Yachts at their Wewelsfleth yard. Her singular design vision, interior and exterior, is by Donald Starkey and characterised by her sleek superstructure and rounded canoe stern.

A full-displacement yacht with a gross tonnage of 1,643GT, she is MCA compliant and is constructed of a steel hull with an aluminium superstructure. Still under her original ownership, she has only ever used privately and presents to market for the first time.

Her large sun deck has sunpads forward, open air dining under the hardtop with a jacuzzi, sun lounge and versatile space aft. The bridge deck aft has open air dining aft and there is a lounge with two arcs of seating around a coffee table on the main deck aft. Spiral stairs lead down to the lazarette and out onto the swim platform.

Starkey's interiors are opulent and Baroque-styled. Unusually her spectacular main saloon is one the upper deck, commanding much better views as a result. A passage leads aft to a circular formal dining room with sliding doors opening onto the open air dining aft. The main deck is home to a lounge area aft, the rest of the deck is given over to accommodation.

WHITE ROSE OF DRACHS can accommodate 14 guests in six cabins, including a full beam owner's suite with his and hers bathrms, two seating areas and a private office opposite a fully equipped gym. A further two double cabins, three twin cabins and plus two additional berths complete her accommodation. She also sleeps 17 crew in nine cabins.

Her top speed is 17 knots, she cruises at 14.5 knots and she has a maximum range of 6,000nm with power coming from two 3,000hp Deutz-MWM SBV12M628 diesel engines.

Principales caractéristiques

Built in Germany to the very highest standard in 2004

Striking lines and rich interior styling by Donald Starkey

Large volume of 1,643GT

Capable of speeds of up to 17 knots

Range of up to 6,000nm at 12 knots

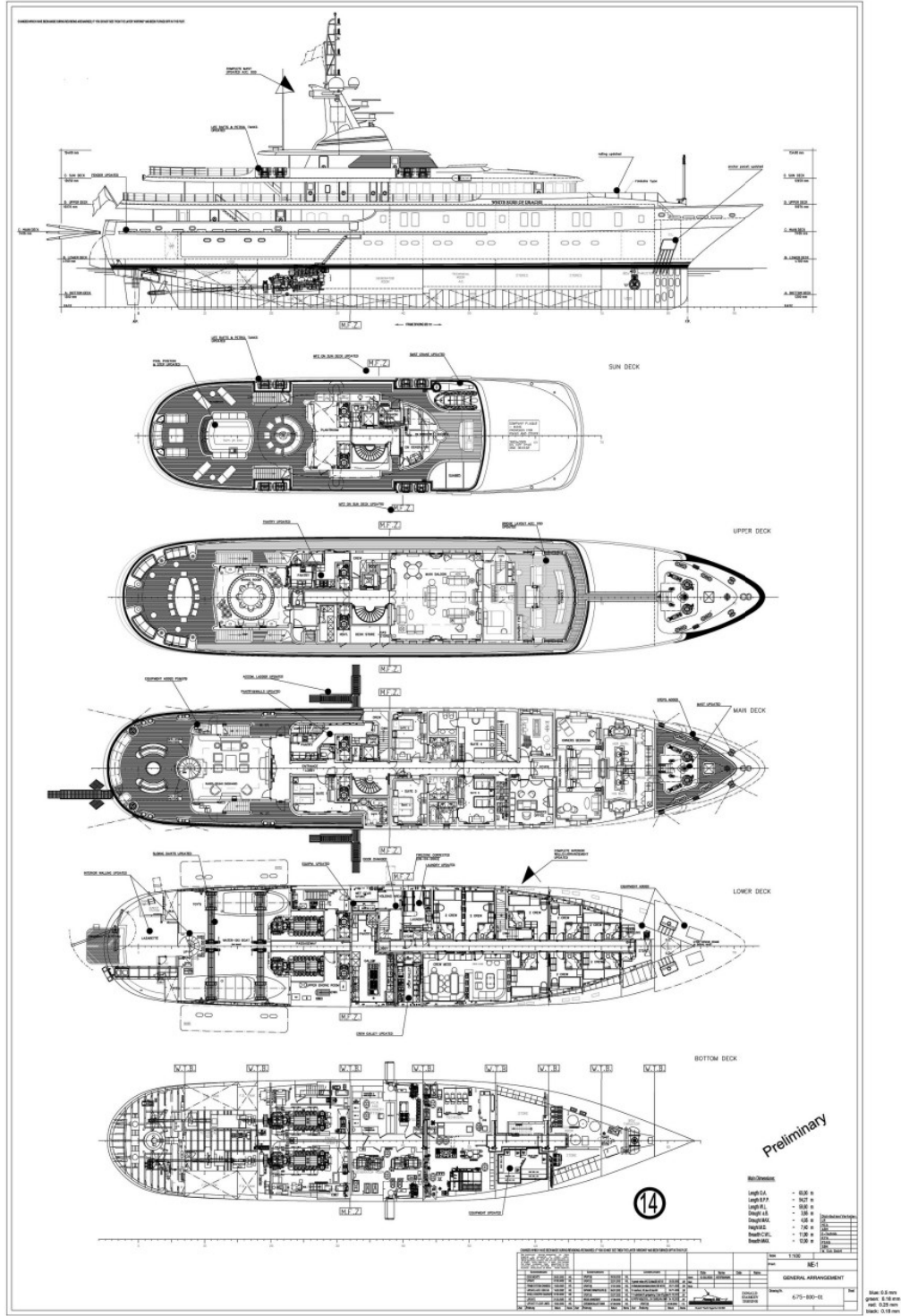
One owner from new and only ever privately used

Accommodation for up to 14 guests in 6 spacious suites

Annexes

1 x Riva, 1 x 10m Ribtech, 1 x 5.6m Ribtech

WHITE ROSE OF DRACHS



BURGESS

WORLD CLASS. WORLD WIDE.

London +44 20 7766 4300	Monaco +377 97 97 81 21	New York +1 212 223 0410	Miami +1 305 672 0150	Singapore +65 9665 8990	Beverly Hills +1 310 424 5112	Palma +34 971 495 413	Athens +30 210 967 1661
	Dubai +971 4 425 5874	Phuket +66 7623 9739	Hong Kong +852 6496 2094	Tokyo +81 46 738 8612	Sydney +61 499 945 557	Mumbai +91 98211 67253	

La publicité de ce(s) navire(s) dans des publications imprimées, sur Internet ou sur tout autre support n'est pas autorisée sans l'autorisation écrite préalable de Burgess.
Toutes les informations sont données de bonne foi et sont considérées comme exactes, mais elles ne peuvent être garanties.

Dernière mise à jour : 01 avril 2024