

WANDERLUST



WANDERLUST

OVERVIEW.

A new secret weapon has been launched onto the charter market - the 85.3m WANDERLUST. The philosophy behind this extraordinary sports activity vessel (SAV) is the innovative balance of performance, luxury and efficiency.

WANDERLUST is a superb platform for scuba diving and snorkelling, tailor-made for avid lovers of the underwater world, so expect to find her cruising world-class dive locations like the Indian Ocean and South Pacific. Guests are guaranteed to enjoy bountiful, healthy reefs, abundant marine life and bucket-list pelagics.

In performance terms, her hydrodynamic efficiency and state-of-the-art propulsion system means she cruises easily at 17 knots and tops out at 23 knots. This expands your cruising range and dive-site options considerably while keeping fuel bills and emission down. Her zero speed stabilisers mean everyone on board enjoys a steady horizon.

One of the most remarkable features of this yacht and the widest part of it: The Loft. This is a winter garden space with floor-to-ceiling privacy glass that slides away to create a remarkable open-air shaded terrace.

It's aft of the high-ceiling sky lounge with huge screen on which guests can enjoy sports, movie nights and highlights of the day's filmed adventures. The ceiling itself is a huge screen, like those in The Loft and the heli-hangar, that can display any image or video you want - you can even bring the Northern Lights inside should you wish.

Another signature is the 400sqm (4,300sqft) aft deck - the space is over 30m (100ft) long. This is where two of the yacht's three tenders, a 7m (23ft) beachlander and an 8.3m (27.2ft) Explorer, are stowed. The third is a Windy SR52 chase tender capable of 45 knots.

The sides of the aft deck fold down to open up the views completely and create even more versatile space for entertainment, relaxation and games like basketball, table tennis or a golf driving range with fish-food balls.

Built to deliver the holiday of a lifetime for up to 12 guests in eight suites, she has everything an amazing charter yacht needs. The sun deck has a glass-fronted jacuzzi and an intimate, sheltered open-air dining space aft.

The upper deck offers more outdoor dining with a bar and BBQ for that chef's table experience and a huge sun lounge aft. On the main deck there's an outdoor cinema in the hangar, one of three on board, which is also fitted with sound, media and light systems for disco nights.

Her crew is dedicated to making every day on board amazing, with a particular flair for beach set-ups and watersports days. Zero speed stabilisers for comfort and a toy locker packed with Sea-Doos, SeaBobs, sailing dinghies, fliteboards, transparent kayaks, paddleboards and a host of tow toys, and you have an unbeatable package.

Be one of the first to experience this game-changing superyacht for charter with Burgess. Enquire now.

Key features

Owner's deck with loft

Versatile winter garden

Hangar area that can double as a multipurpose space

Sun deck glass-fronted jacuzzi

400sqm (4,300sqft) signature aft deck

WANDERLUST

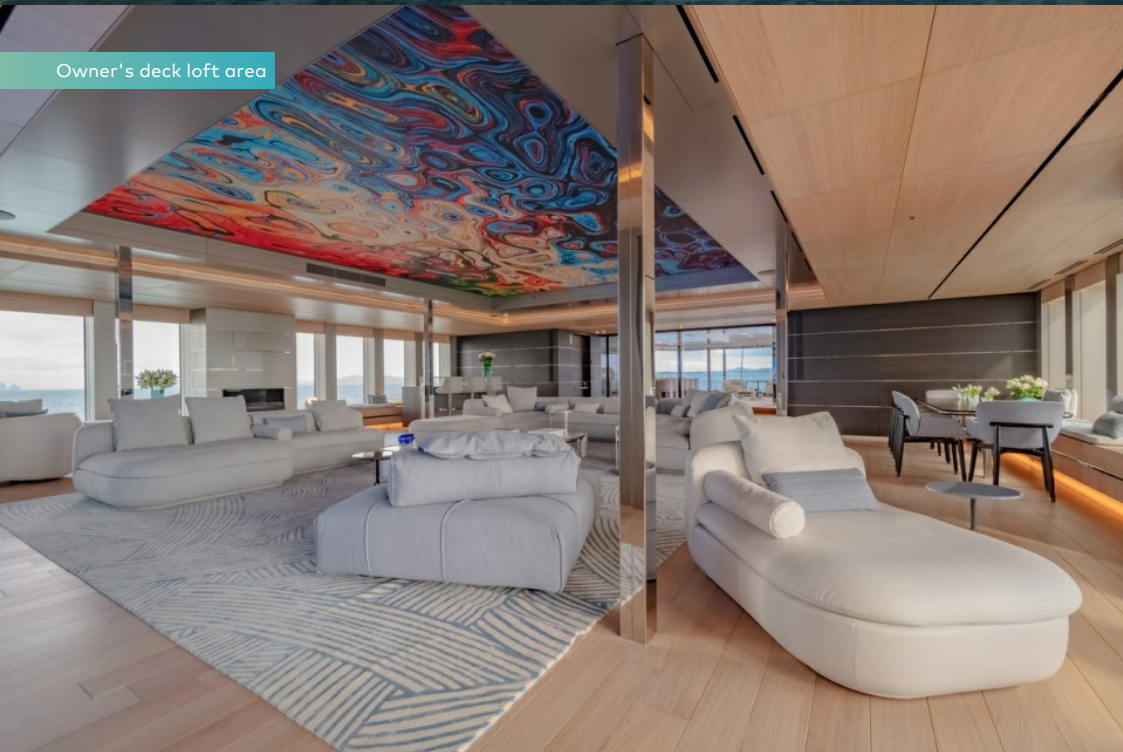
Cruising



Owner's deck loft area



Owner's deck loft area



Owner's deck loft detail



BURGESS

Discover the difference.
burgessyachts.com



WANDERLUST

Owner's deck loft cinema set up



Owner's deck loft interactive ceiling



Owner's deck winter garden area



Owner's deck winter garden dining area



WANDERLUST

Owner's deck winter garden lounge



Owner's deck master cabin



Owner's deck master shower room en suite



Owner's deck master bathroom en suite



WANDERLUST

Main deck VIP cabin



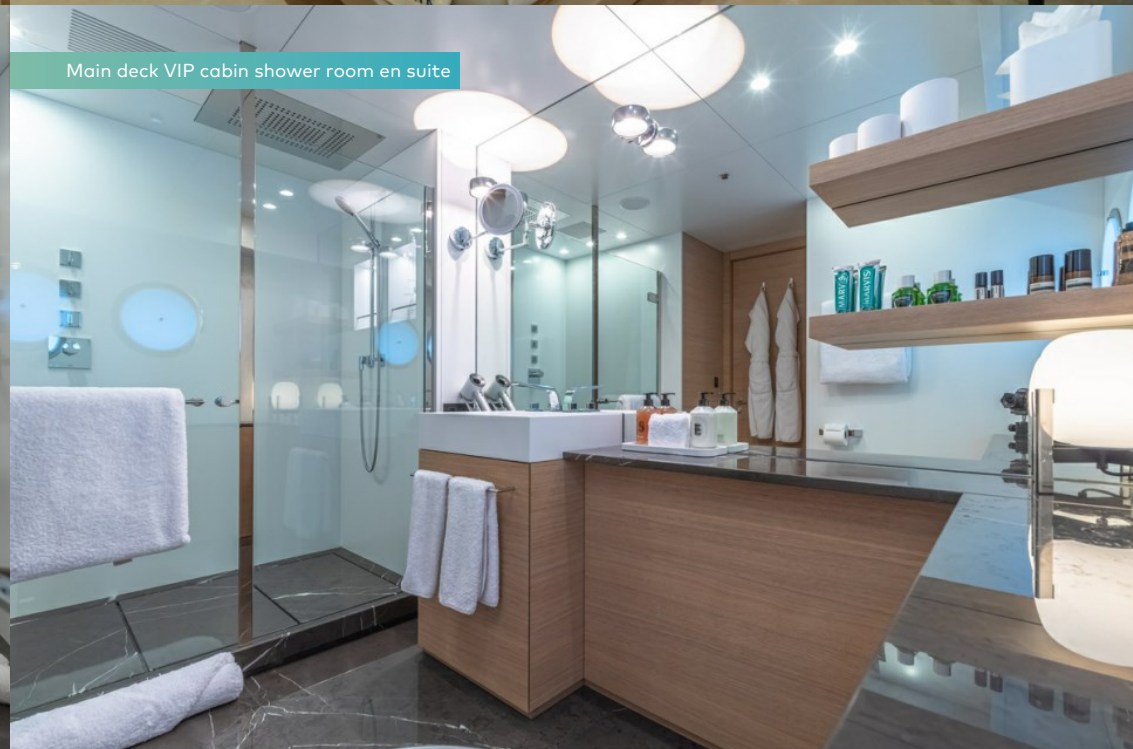
Main deck VIP cabin



Main deck VIP cabin shower room en suite



Main deck VIP cabin shower room en suite



BURGESS

Discover the difference.
burgessyachts.com



WANDERLUST

Main deck double cabin (convertible into twin)



Main deck double cabin (convertible into twin)



Hallway



Hangar area



WANDERLUST

Wheelhouse



Watertoys & tenders



WANDERLUST



At anchor



BURGESS

Discover the difference.
burgessyachts.com



WANDERLUST

SPECIFICATION.



Length
85.3m (279.8ft)



Built
2022, SILVERYACHTS, Australia



Interior designer
Vain Interiors



Beam
11m (36.1ft)



Draft
3.4m (11.2ft)



Gross tonnage
1,561



Cruising speed
14 knots



Maximum speed
23 knots



Fuel consumption at cruising speed
500 litres per hour



Engines
2 x 3,328hp MTU



Guests
12



No. of guest cabins
8 (6 x double, 2 x double/twin)



Crew
24

Note

Registered under the Yacht Engaged in Trade scheme (YET). All Mediterranean charters must start in either the South of France, Monaco or Corsica. For all charters, the principal charterer must be a non-EU resident.

[View yacht on website](#)

[Watch yacht video](#)



BURGESS

Discover the difference.
burgessyachts.com



EQUIPMENT.

Tenders & toys



3 x Tenders



2 x Sailing dinghies



1 x Deck jacuzzi



Anti-jellyfish pool



4 x Waverunners



4 x SeaBobs



4 x eFoils



2 x Kayaks



4 x Stand up paddleboards



Wakeboard



Waterskis



Inflatable tows



Snorkelling gear

16m Windy SR52 Chase tender, 8.3m Explorer Xtender, 7m Beachlander Xtender, 4 x GTX Limited Sea-Doo Jet Skis, 4 x Flite Boards (e-foil), 4 x F5 Seabobs, 4 x Inflatable Stand Up Paddleboards, 2 x Clear bottom kayaks, 2 x Sailing dinghies, Wakeboards, Waterskis, Anti-jellyfish pool, Inflatable towables, Snorkeling equipment , 20 x Tanks with nitrox compressors (rendez-vous diving only)

Fitness & wellness



Free weights



Resistance bands



Training bench



Treadmill



Upright stationary bike



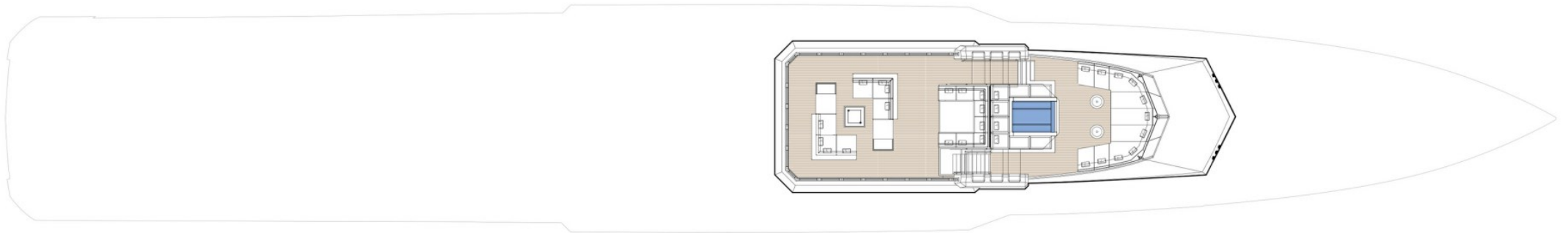
Yoga mats



On board masseuse

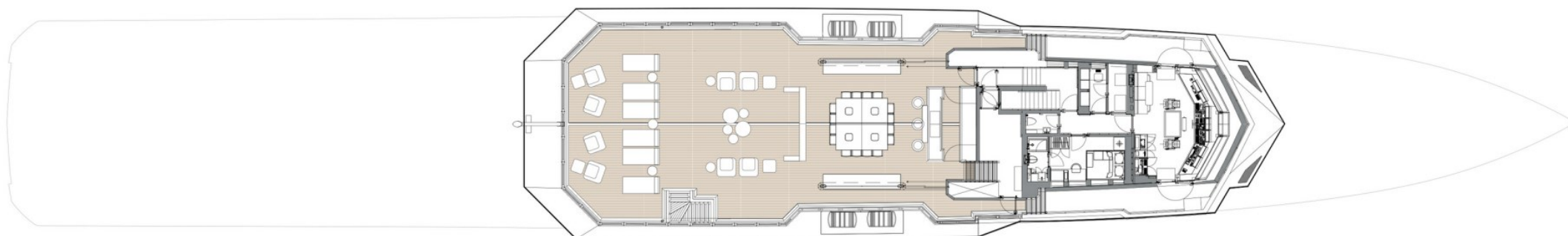
MyRun Technogym treadmill, 2 x Technogym Ride bike, Technogym Bench, Resistance bands, Dumbbells, Weighted knuckles, Training mats, Pilates Instructor on board

SUN DECK



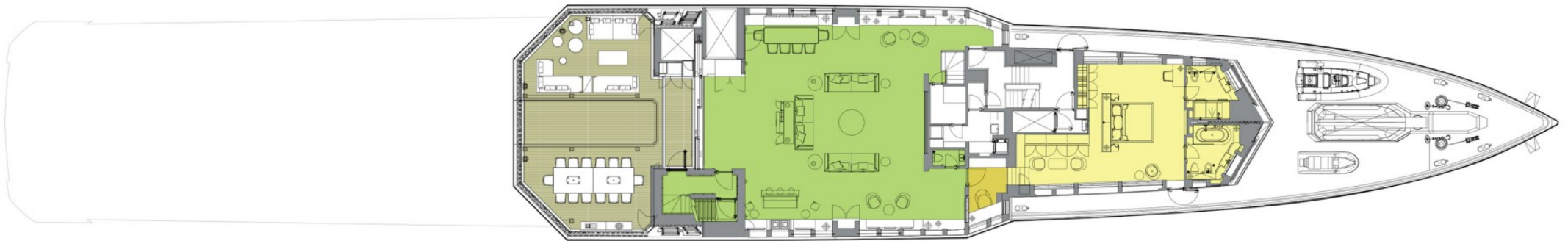
 GUEST AREAS  MASTER SUITE  VIP SUITES  GUEST CABINS  MASTER SUITE OFFICE  JACUZZI  WINTER GARDEN

BRIDGE DECK



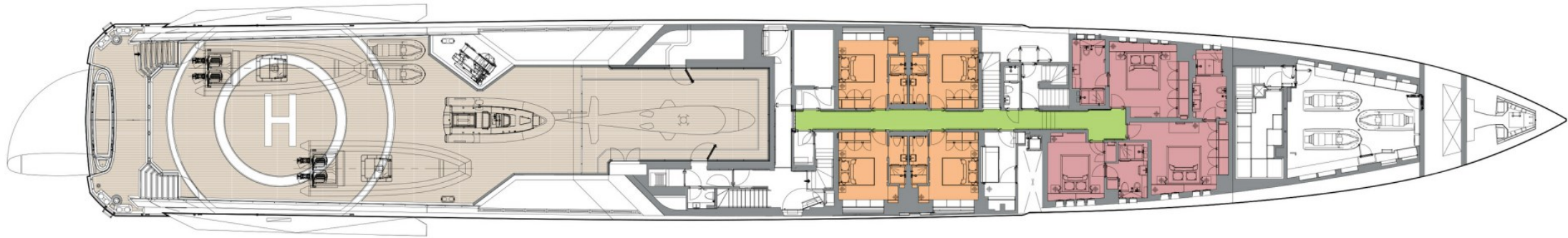
■ GUEST AREAS ■ MASTER SUITE ■ VIP SUITES ■ GUEST CABINS ■ MASTER SUITE OFFICE ■ JACUZZI ■ WINTER GARDEN

OWNER'S DECK



 GUEST AREAS  MASTER SUITE  VIP SUITES  GUEST CABINS  MASTER SUITE OFFICE  JACUZZI  WINTER GARDEN

MAIN DECK



■ GUEST AREAS ■ MASTER SUITE ■ VIP SUITES ■ GUEST CABINS ■ MASTER SUITE OFFICE ■ JACUZZI ■ WINTER GARDEN

BURGESS

WORLD CLASS. WORLD WIDE.

London	Monaco	New York	Miami	Singapore	Beverly Hills	Palma	Athens
+44 20 7766 4300	+377 97 97 81 21	+1 212 223 0410	+1 305 672 0150	+65 9665 8990	+1 310 424 5112	+34 971 495 413	+30 210 967 1661
Dubai	Phuket	Hong Kong	Tokyo	Sydney	Mumbai	Shanghai	
+971 4 425 5874	+66 7623 9739	+852 6496 2094	+81 46 738 8612	+61 499 945 557	+91 98211 67253	+86 187 0898 6800	

Advertising of these vessel(s) in printed publications, on the internet or in any other medium is not permitted without prior written permission from Burgess. All particulars are given in good faith and are believed correct but they cannot be guaranteed.

Last updated: 18 April 2024