

VICTORIOUS



VICTORIOUS

SPECIFICATION.



Asking price
EUR 110,000,000



Built
2021, AKYACHT, Turkey



Length
85m (278.8ft)



Beam
14.2m (46.6ft)



Draft
4.4m (14.4ft)



Gross tonnage
2,291



Cruising speed
12 knots



Maximum speed
16 knots



Range
13,000 nm



Flag
Cayman Islands



Lying
USA



Class
Lloyd's 100 A1 SSC Yacht (p) Mono G6, LMC,
UMS, LY2



Exterior designer
Michael Leach Design



Interior designer
H2 Yacht Design



Construction
Hull - Steel, Superstructure - Aluminium, Deck -
Teak



Crew
26



Guests
12



Cabins
6 (6 x double)



Engines
2 x 1,475hp Caterpillar



Propulsion
Twin screw diesel yacht

Note

Not available for sale to US residents while in US waters.

[View yacht on website](#)

[Watch yacht video](#)



VICTORIOUS

Upper deck main lounge



Upper deck main lounge



Staircase



Upper deck interior dining



VICTORIOUS

Upper deck forward lounge



Upper deck forward bar



Upper deck forward observation lounge



Foyer



VICTORIOUS

Children's playground



Master cabin



Master cabin



Master cabin en suite bathroom



VICTORIOUS

Master cabin dressing



VIP cabin



VIP cabin



Double cabin



VICTORIOUS

Twin/staff cabin



Guest bathroom en suite



Wine and cigar clubroom



Wine and cigar clubroom



VICTORIOUS

Wine and cigar clubroom fire place



Wine and cigar clubroom



Spa and wellness area



Beach club



VICTORIOUS

Beach club



Beach club



Beach club gym area



Beach club bar and lounging area



VICTORIOUS

Beach club pool



Sun deck aft



Sun deck aft



Bridge deck aft



BURGESS

Discover the difference.
burgessyachts.com



VICTORIOUS

Master's private deck



Upper deck aft



Upper deck aft



Upper deck aft jacuzzi



VICTORIOUS

Main deck aft with 12.5m limo tender



Helipad



Aerial view



Cruising



VICTORIOUS

Cruising



VICTORIOUS

OVERVIEW.

The 85m (278.8ft) VICTORIOUS is a brand-new, feature-packed explorer yacht with a steel hull and an aluminium superstructure built to Lloyd's classification and MCA LY2 compliance. She was delivered by Turkish shipyard AKYACHT in summer 2021, in collaboration with a dream team of Michael Leach Design and H2 Yacht Design, and won the category 'Motor Yacht Over 80 Metres' at The International Yacht & Aviation Awards 2022, as well as the Robb Report 2022 'Best of Best' Award. She is currently delighting eager guests as a Burgess-managed charter yacht.

She has an extraordinary list of features. On the lower deck is a 200sqm (2,153sqft) beach club and wellness centre with a large pool, two lounge and bar areas, sea terraces port and starboard, dedicated gym, massage and treatment room, hammam and beauty salon. Also on the lower deck are double and twin cabins for guests, children or staff. There is step-free access to an elevator serving lower to bridge decks.

The main deck has a children's playroom, a tiered cinema and five further guest suites forward including a full-beam VIP suite with a private lounge. The main deck aft is a huge space dedicated to stowage for three of the yachts four tenders these include a 12m (39.3ft) custom-built aluminium catamaran limo/beach-lander, a 11.5m sportfishing Fountain 38 and a 8m (26ft) Nordkapp RIB. There is also enclosed stowage for her collection of watertoys. With the tenders launched, this space has potential for a range of guest activities.

On the bridge deck, the owner's suite is aft facing with his-and-hers en suite, walk-in wardrobe and access to the jacuzzi and sunpads on the aft terrace. Walkaround sidedecks lead forward either side to seating forward of the bridge. Also on the upper deck are two children's cabins that could also serve as staff cabins. These complete accommodation for up to 24 guests in 12 cabins.

The upper deck is all about entertainment. On the aft deck is a sit-up bar, open air dining for 16 guests and banquette seating, as well as a jacuzzi and sunpads aft. Walkaround sidedecks lead forward to the touch-and-go foredeck helipad, which could also serve as an entertainment space or sun lounge. Inside the sky lounge has lounge seating and a sit-up bar, there is an observation lounge with wraparound views and a baby grand piano forward, as well as a formal dining room and a second, more intimate lounge.

For the ultimate after-dinner occasion, the sun deck has two lounge areas including one with its own working fireplace, and there is also a wine cellar, humidior and an open-air terrace aft to enjoy your cigar.

Twin 1,475hp Caterpillar diesel engines give her a top speed of 16 knots, a cruising speed of 12.5 knots and an explorer yacht range of 13,000nm. She also has zero speed stabilisers to ensure comfort on arrival.

Key features

True Explorer superyacht capable of circumnavigating the world

200sqm stylish beach club equipped with swimming pool, spa, gym, beauty salon and with three folding terraces

Flexible accommodation for up to 24 guests in 12 cabins including a private owner's deck

Impressive tenders and watertoys capacity with dedicated enclosed storage

Helipad

Large cinema room

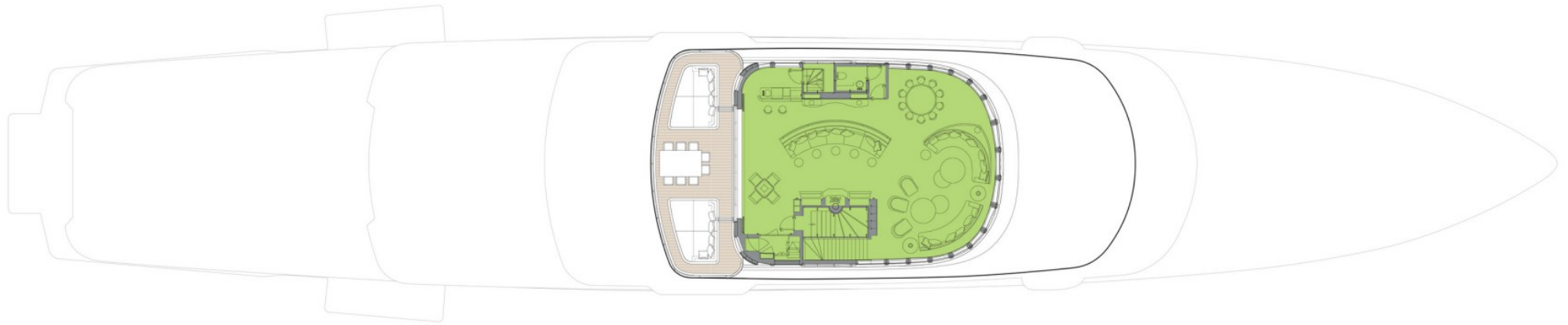
Wine and cigar clubroom with fireplace

Winner of the Robb Report 'Best of Best' and International Yacht & Aviation Awards 2022

Tenders

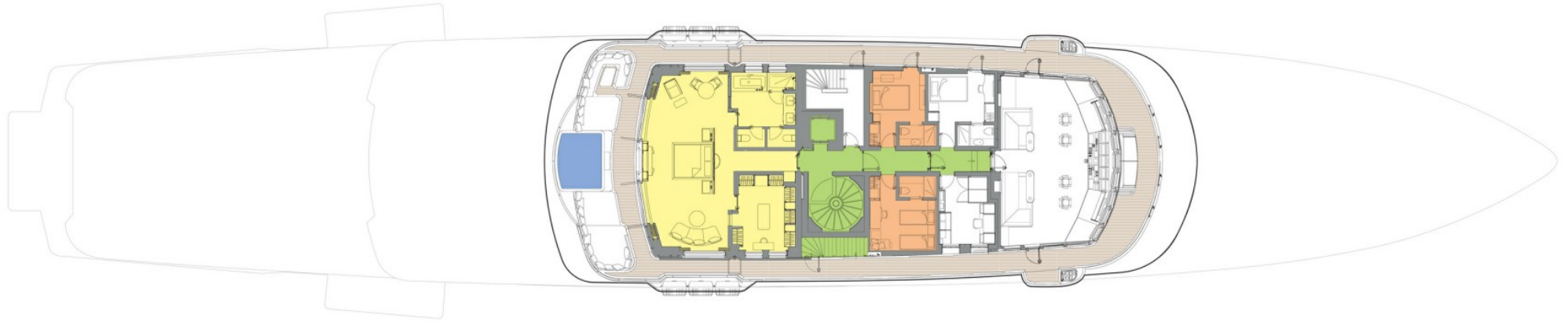
12.8m (42ft) custom-made AKYACHT limousine catamaran tender with 2x500hp inboard engines, 11.5m Fountain 38 tender with 3 x 300hp outboard engines, 8m (26ft) Nordkapp RIB with 350hp outboard engine

SUN DECK



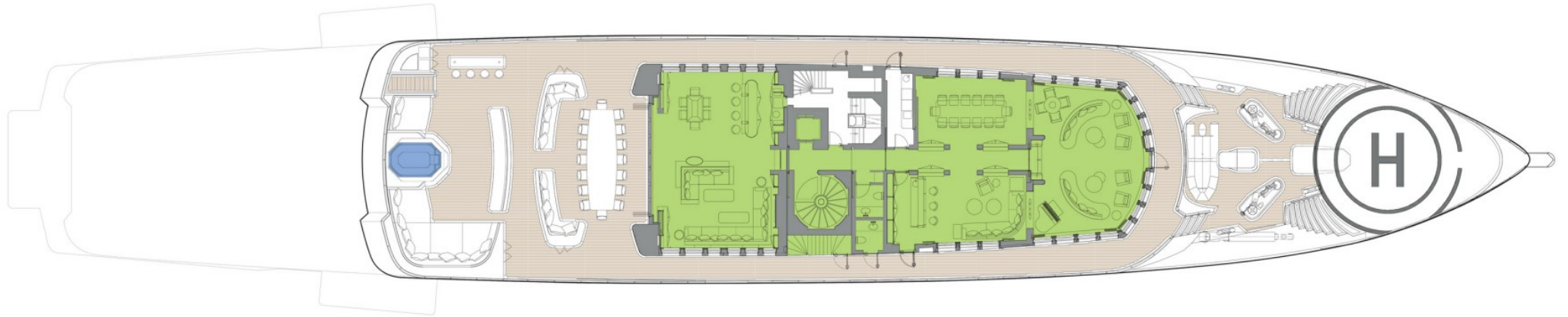
- GUEST AREAS
- OWNER'S SUITE
- VIP SUITE
- GUEST CABINS
- CINEMA
- GYM
- SPA
- MASSAGE SUITE
- JACUZZI
- POOL

BRIDGE DECK



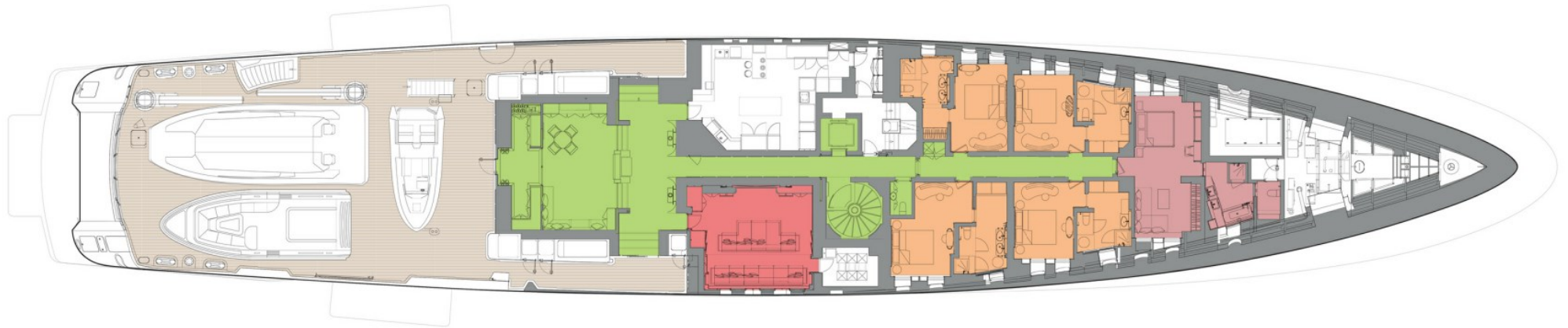
- GUEST AREAS
- OWNER'S SUITE
- VIP SUITE
- GUEST CABINS
- CINEMA
- GYM
- SPA
- MASSAGE SUITE
- JACUZZI
- POOL

UPPER DECK



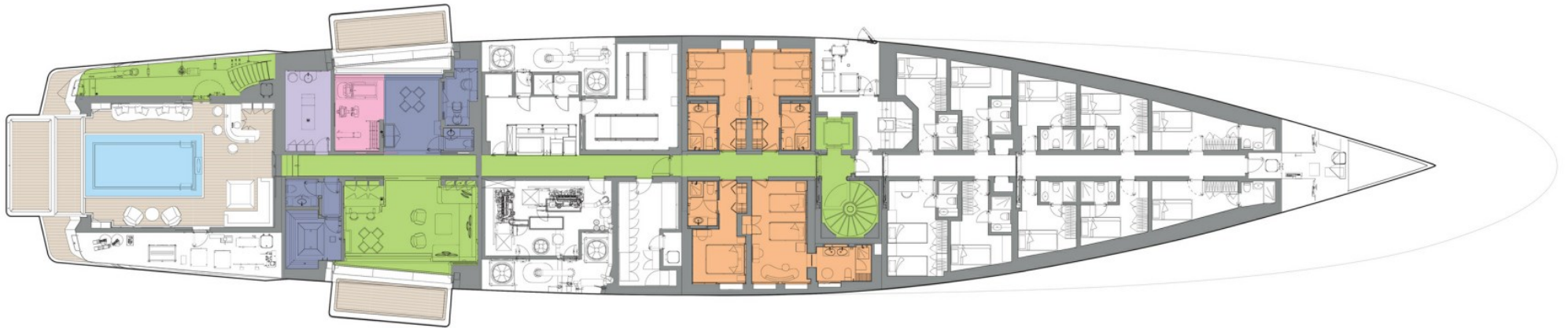
- GUEST AREAS
- OWNER'S SUITE
- VIP SUITE
- GUEST CABINS
- CINEMA
- GYM
- SPA
- MASSAGE SUITE
- JACUZZI
- POOL

MAIN DECK



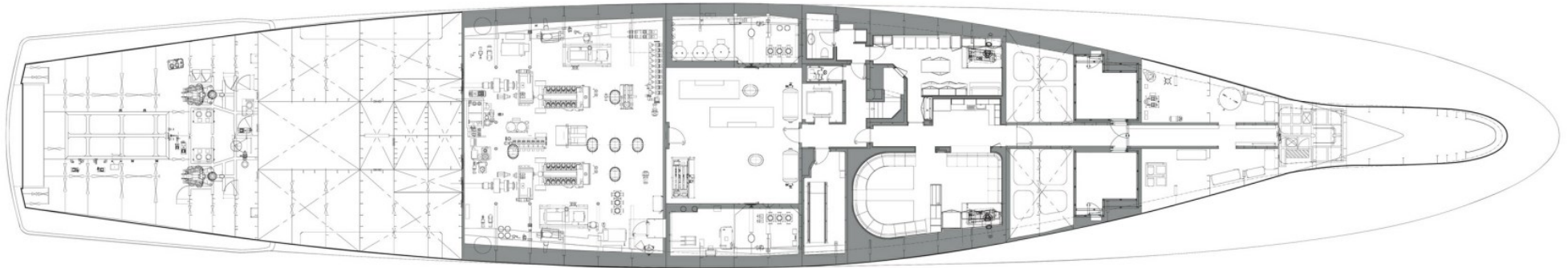
- GUEST AREAS
- OWNER'S SUITE
- VIP SUITE
- GUEST CABINS
- CINEMA
- GYM
- SPA
- MASSAGE SUITE
- JACUZZI
- POOL

LOWER DECK



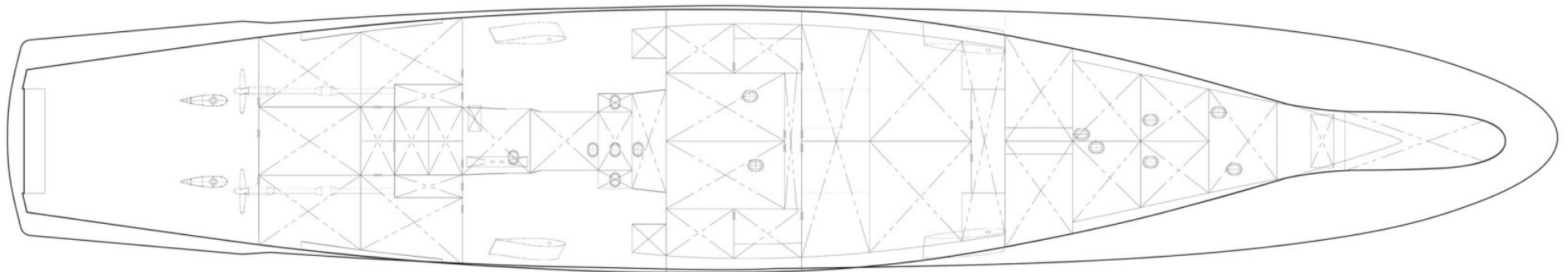
- GUEST AREAS
- OWNER'S SUITE
- VIP SUITE
- GUEST CABINS
- CINEMA
- GYM
- SPA
- MASSAGE SUITE
- JACUZZI
- POOL

TANK TOP



- GUEST AREAS
- OWNER'S SUITE
- VIP SUITE
- GUEST CABINS
- CINEMA
- GYM
- SPA
- MASSAGE SUITE
- JACUZZI
- POOL

TANK PLAN



- GUEST AREAS
- OWNER'S SUITE
- VIP SUITE
- GUEST CABINS
- CINEMA
- GYM
- SPA
- MASSAGE SUITE
- JACUZZI
- POOL

BURGESS

WORLD CLASS. WORLD WIDE.

London +44 20 7766 4300	Monaco +377 97 97 81 21	New York +1 212 223 0410	Miami +1 305 672 0150	Singapore +65 9665 8990	Beverly Hills +1 310 424 5112	Palma +34 971 495 413	Athens +30 210 967 1661
	Dubai +971 4 425 5874	Phuket +66 7623 9739	Hong Kong +852 6496 2094	Tokyo +81 46 738 8612	Sydney +61 499 945 557	Mumbai +91 98211 67253	

Advertising of these vessel(s) in printed publications, on the internet or in any other medium is not permitted without prior written permission from Burgess. All particulars are given in good faith and are believed correct but they cannot be guaranteed.

Last updated: 01 March 2024