

# VASSA

---

## Key features

---

**New to the charter market**

---

**Low fuel consumption**

---

**Exercise equipment**

---

**Masseuse on board**

---

**Shaded deck dining and deck areas**

---

**Zero speed stabilisers to reduce any rolling motion while at anchor**

---

VASSA

At anchor



Aerial view



At anchor



Sun deck



VASSA

Sun deck



Sun deck



Sun deck



Main deck aft



BURGESS

Discover the difference.  
burgessyachts.com



VASSA

Foredeck



Swimming platform



Main deck lounge



Main deck lounge



BURGESS

Discover the difference.  
burgessyachts.com



# VASSA

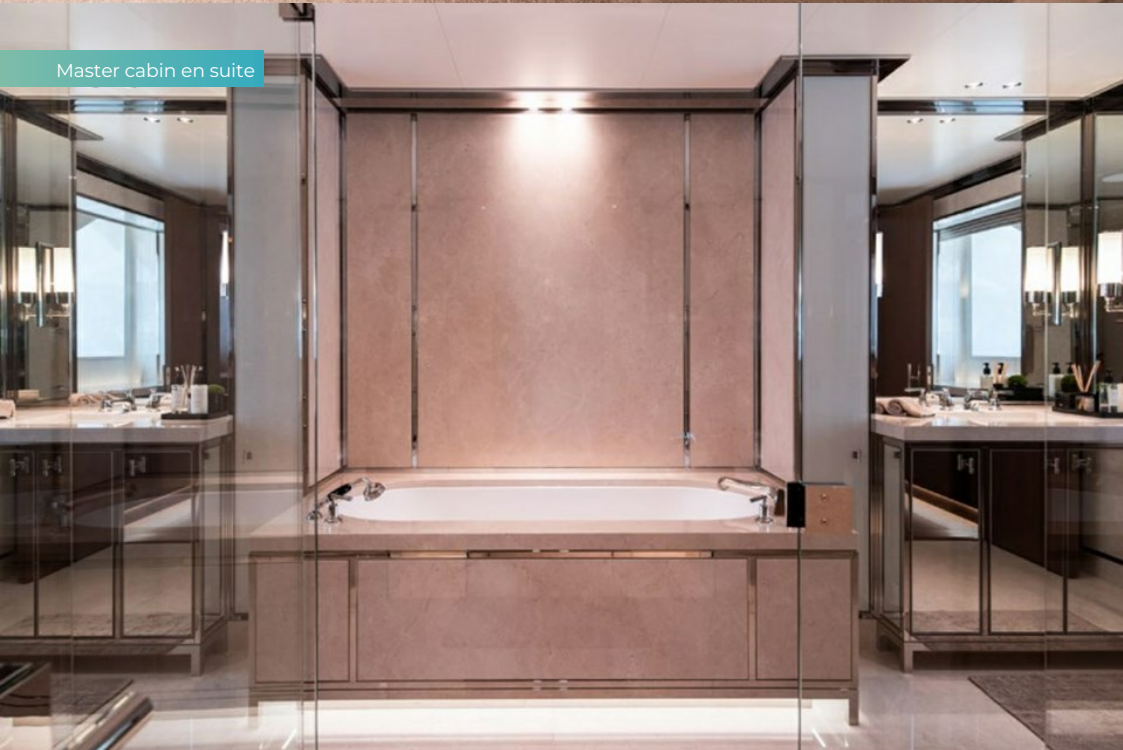
Upper deck lounge



Master cabin



Master cabin en suite



Double cabin



VASSA

Double cabin



Double cabin



Twin cabin



Twin cabin



VASSA

# SPECIFICATION.



Length  
**68.8m (225.6ft)**



Built  
**2012 (refitted 2019), Feadship, De Vries, The Netherlands**



Interior designer  
**RWD**



Beam  
**11.2m (36.7ft)**



Draft  
**3.8m (12.5ft)**



Gross tonnage  
**1,274**



Cruising speed  
**12 knots**



Maximum speed  
**16 knots**



Fuel consumption at cruising speed  
**312 litres per hour**



Engines  
**2 x 2,038hp MTU**



Guests  
**12**



No. of guest cabins  
**7 (3 x double, 2 x twin, 2 x single)**



Crew  
**15**

## Note

Not available for charter to US residents while in US waters.

[View yacht on website](#)





VASSA

# TENDERS & TOYS



2 × Tenders



2 × Waverunners



1 × Stand up jetski



2 × SeaBobs



1 × Jetsurf



2 × Kayaks



2 × Stand up paddleboards



Windsurfer



Wakeboard



Anti-jellyfish pool



Trampoline



Waterslide



Inflatable tows



RYA training centre for jetskis & waverunners

VASSA

# FITNESS & WELLNESS



Cross trainer



Free weights



Treadmill



Massage room

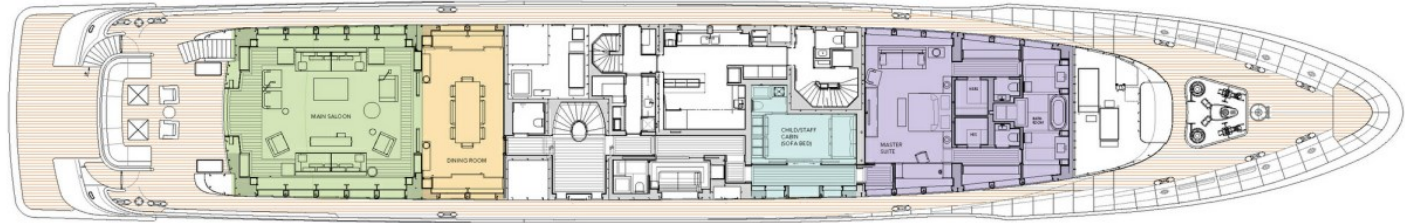
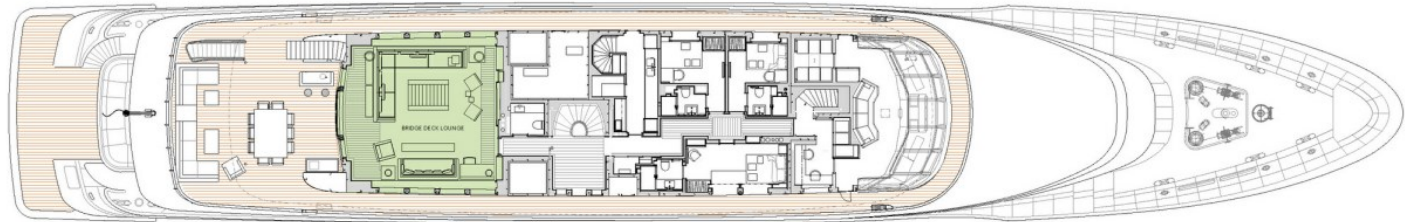
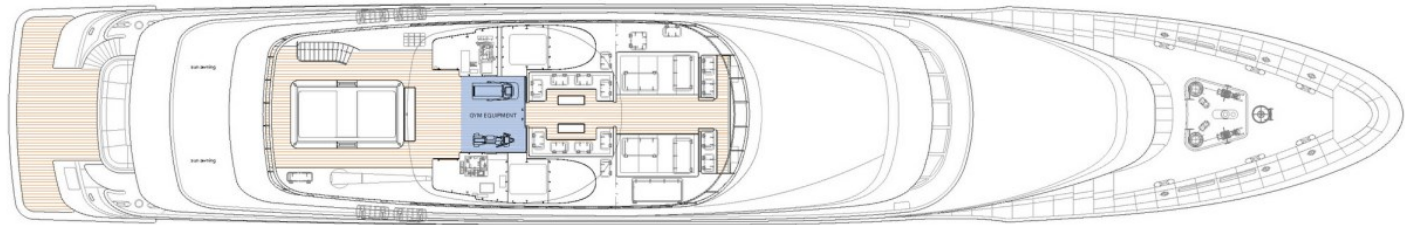


On board masseuse



VASSA - 68.7m Feadship

DECK PLANS



KEY:

- LOUNGE AREAS
- MASTER SUITE
- DINING ROOM
- GUEST CABINS
- SINGLE CHILD / STAFF CABIN
- GYM EQUIPMENT

# BURGESS

# WORLD CLASS. WORLD WIDE.

<b>London</b> +44 20 7766 4300	<b>Monaco</b> +377 97 97 81 21	<b>New York</b> +1 212 223 0410	<b>Miami</b> +1 305 672 0150	<b>Singapore</b> +65 9665 8990	<b>Beverly Hills</b> +1 310 424 5112	<b>Palma</b> +34 971 495 413	<b>Athens</b> +30 210 967 1661
<b>Dubai</b> +971 4 425 5874	<b>Phuket</b> +66 7623 9739	<b>Hong Kong</b> +852 6496 2094	<b>Tokyo</b> +81 46 738 8612	<b>Sydney</b> +61 499 945 557	<b>Mumbai</b> +91 98211 67253	<b>Shanghai</b> +86 187 0898 6800	<b>Rio de Janeiro</b> +55 21 2553-3238
<b>Aspen</b> +1 970 710 2294							

Advertising of these vessel(s) in printed publications, on the internet or in any other medium is not permitted without prior written permission from Burgess. All particulars are given in good faith and are believed correct but they cannot be guaranteed.

Last updated: 26 February 2025