

VANORA



VANORA

SPECIFICATION.



Asking price
USD 8,985,000



Built
2023, Seacrest Marine, Thailand



Length
52m (170.6ft)



Beam
8.5m (27.9ft)



Draft
1.7m (5.6ft)



Gross tonnage
426



Cruising speed
16 knots



Maximum speed
20 knots



Flag
Thailand



Lying
Asia



Class
Lloyd's Register (LR)



Construction
**Hull - Aluminium, Superstructure - Aluminium,
Deck - Teak**



Crew
16



Guests
22



Cabins
11 (4 x double, 7 x twin)



Engines
2 x 1,875hp Cummins



Generators
3



Propulsion
Twin screw diesel yacht

[View yacht on website](#)



VANORA



BURGESS

Discover the difference.
burgessyachts.com

VANORA



BURGESS

Discover the difference.
burgessyachts.com

VANORA



BURGESS

Discover the difference.
burgessyachts.com

VANORA



BURGESS

Discover the difference.
burgessyachts.com

VANORA



BURGESS

Discover the difference.
burgessyachts.com

VANORA



BURGESS

Discover the difference.
burgessyachts.com

VANORA

OVERVIEW.

VANORA is a 52m (170.6ft) custom yacht built by Seacrest Marine. Her superstructure and hull are of aluminium construction, and she was delivered in 2023.

Remarkable for her size, VANORA can accommodate up to 22 guests in 11 cabins. She features a fully equipped dive centre, including an array of compressors, tanks, masks, wetsuits and more, that allow for an unmatched diving experience at sea. VANORA has a neutral and contemporary interior styling, with a salon that also doubles as a cinema, and a large dining room, both of which feature large windows that bring in plenty of natural light. In addition, VANORA boasts an exceptionally large sundeck with jacuzzi, and a large swim platform that enhance the connection to the stunning surroundings.

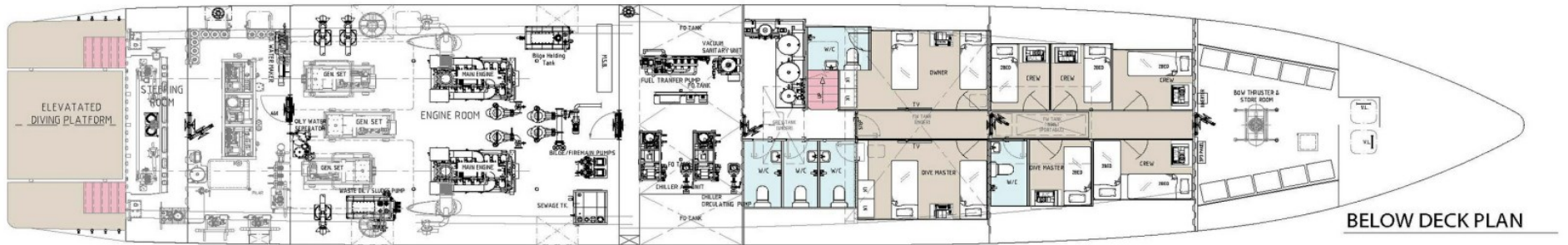
VANORA is powered by two Cummins engines that give her a maximum speed of 20 knots and a cruising speed of 16 knots. VANORA's comprehensive dive centre and abundant cabins make her a rare and exceptional opportunity in today's market.

Key features

General Arrangement

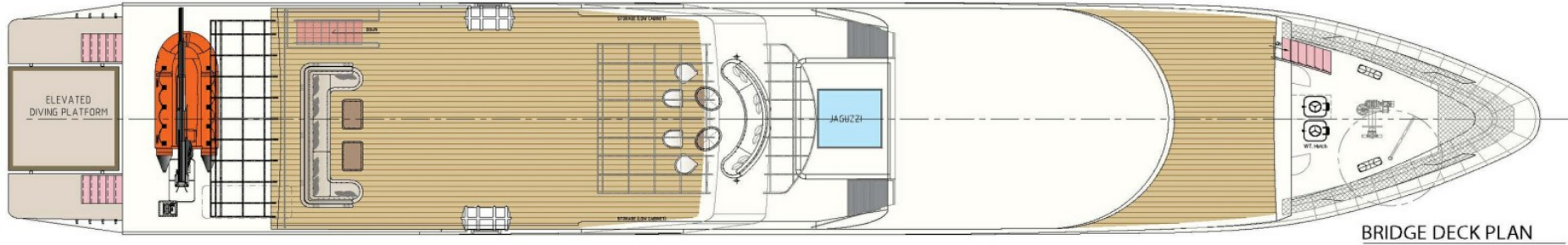


MAIN DECK PLAN



BELOW DECK PLAN

General Arrangement



BURGESS

WORLD CLASS. WORLD WIDE.

London +44 20 7766 4300	Monaco +377 97 97 81 21	New York +1 212 223 0410	Miami +1 305 672 0150	Singapore +65 9665 8990	Beverly Hills +1 310 424 5112	Palma +34 971 495 413	Athens +30 210 967 1661
Dubai +971 4 425 5874	Phuket +66 8257 01150	Hong Kong +852 6496 2094	Tokyo +81 46 738 8612	Sydney +61 499 945 557	Mumbai +91 98211 67253	Shanghai +86 159 0162 1898	Rio de Janeiro +55 21 2553-3238
		Aspen +1 970 710 2294	Guernsey +44 1481 735360	Palm Beach +1 561 973 2768			

Advertising of these vessel(s) in printed publications, on the internet or in any other medium is not permitted without prior written permission from Burgess. All particulars are given in good faith and are believed correct but they cannot be guaranteed.

Last updated: 30 April 2026