

TITANIA



TITANIA

OVERVIEW.

TITANIA is designed for an effortless indoor-outdoor lifestyle and is stamped with the pedigree of one of the world's premier shipyards. Her features include all the essential attributes for luxury living afloat: vast entertainment spaces, superlative accommodation and state-of-the-art amenities.

The yacht's stunning interior lets the light in at every opportunity, creating intimate spaces for guests to relax, as well as spacious entertaining areas. Sumptuous accommodation is arranged across seven cabins, including two breathtaking master suites, a VIP cabin and four doubles, all with beautifully appointed marble bathrooms and the latest entertainment systems. This vast interior space is all accessible by the on-board elevator that forms a central focus of her impressive foyer.

Key features

Beach club at sea level

Sauna, massage room and beauty salon with on board masseuse and beautician

Fully equipped glass gym with panoramic views and a personal trainer

Two master cabins

Large jacuzzi with swim up bar on the pool deck

Zero speed stabilisers to reduce any rolling motion while at anchor

Drop down cinema in sky lounge

TITANIA

Aerial view



Main deck lounge



Main deck fine dining



Bridge deck lounge



TITANIA

Bridge deck lounge



Bridge deck dining



Main deck master cabin



Main deck master cabin study



TITANIA

Master cabin en suite



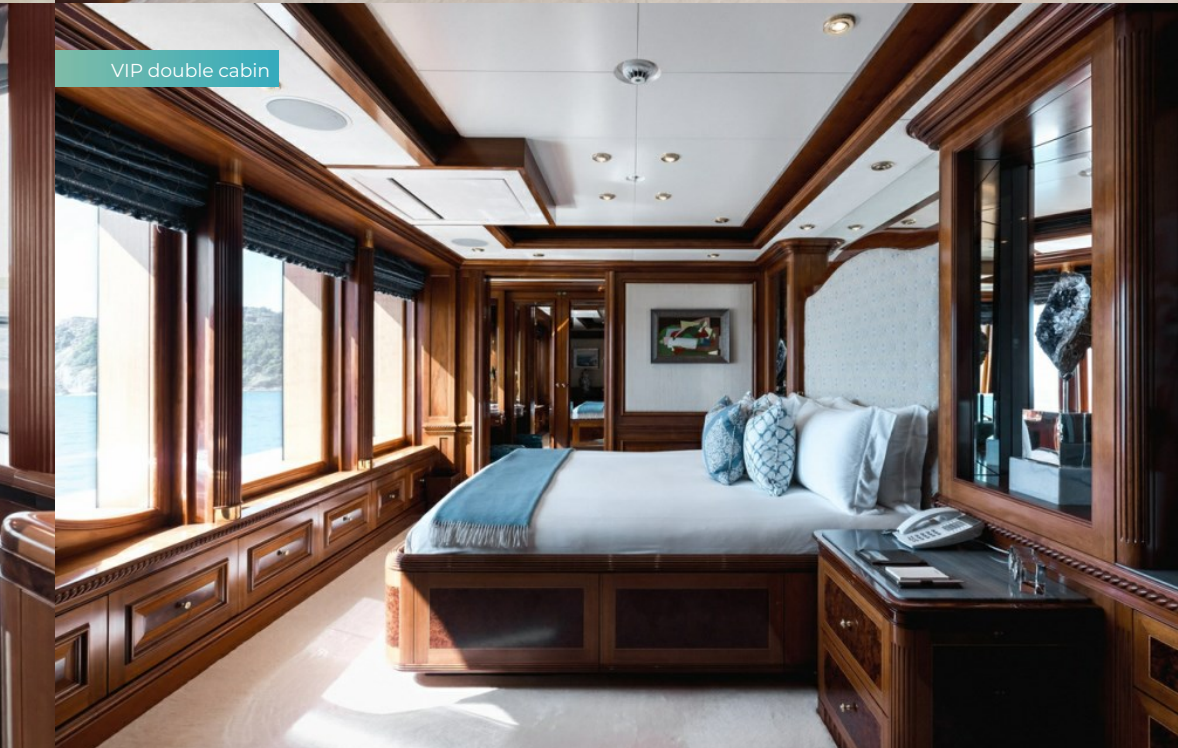
Upper deck master cabin



Upper deck master cabin



VIP double cabin



TITANIA

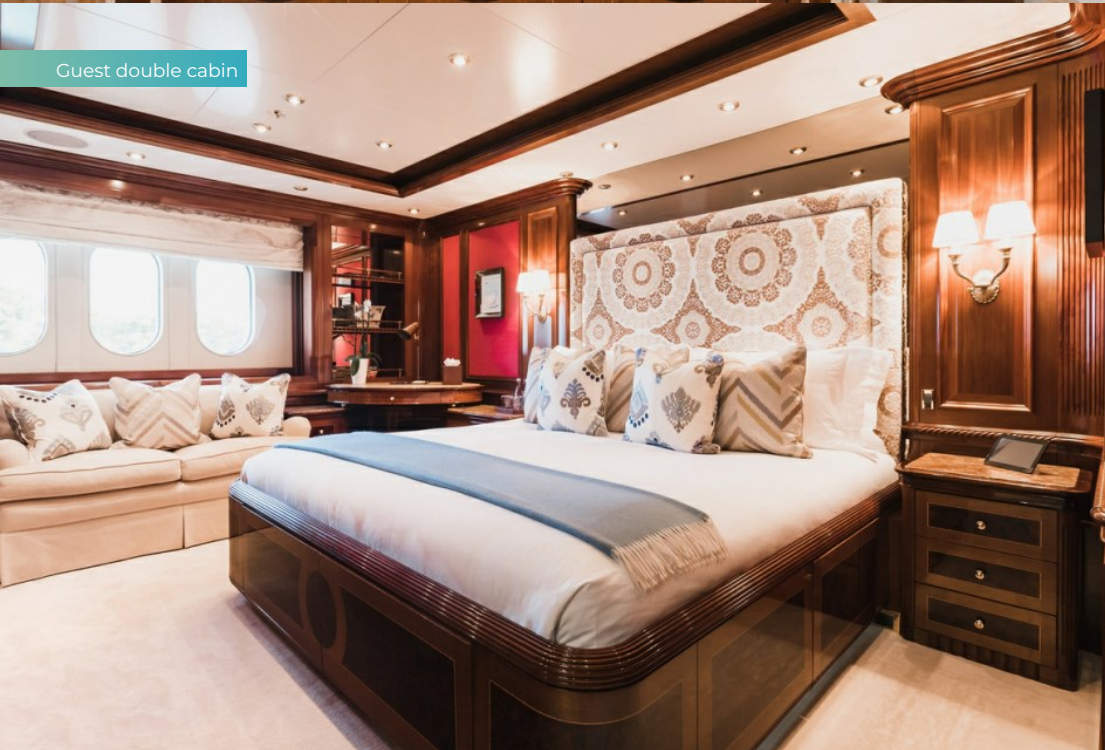
Guest cabin en suite



Guest double cabin



Guest double cabin



Main deck aft



TITANIA

Fine dining



Bridge deck aft



Upper deck aft fine dining



Swim up bar



TITANIA

Upper deck pool



Sun deck forward



Beach club



Gym



TITANIA

Spa



Tender



Waterpark



Watersports



BURGESS

Discover the difference.
burgessyachts.com



TITANIA

Jetskis



BURGESS

Discover the difference.
burgessyachts.com



TITANIA

SPECIFICATION.



Length
73m (239.4ft)



Built
2006 (refitted 2018), Lurssen-Werft, Germany



Interior designer
Zuretti Design



Beam
13.1m (43ft)



Draft
3.7m (12.1ft)



Gross tonnage
1,894



Cruising speed
12 knots



Maximum speed
16 knots



Fuel consumption at cruising speed
400 litres per hour



Engines
2 x 1,850hp Caterpillar



Guests
12



No. of guest cabins
7 (7 x double)



Crew
21

Note

Fully licensed for charters in Spanish waters. Not available for charter to US residents while in US waters.

[View yacht on website](#)

[Watch yacht video](#)



TITANIA

TENDERS & TOYS



2 × Tenders



2 × Sailing dinghies



Pool



2 × Waverunners



2 × Stand up jetskis



2 × SeaBobs



1 × Flyboard



1 × eFoil



2 × Kayaks



2 × Stand up paddleboards



Surfboard



Wakeboard



Wakesurf



Waterskis



Trampoline



Aquapark



Inflatable platform



Waterslide



Inflatable toys



Scuba diving equipment



Snorkelling gear



RYA training centre for jetskis & waverunners

8m Royal Denship custom tender with 260hp engine, 8m Caudwell Marine RIB tender with 300hp engine | 2 x Sailing dinghies | Kawasaki SX-R 800 stand up jetski | 2 x Sea-Doo waverunners (2 man) | 2 x Kayaks | 3 x SeaBob F7s | 2 x eFoil electric hydrofoil board | Scuba diving equipment | Stand up paddle boards (Intermediate and beginner level) | Flyboard | Wing kite and wing foil | 12.7m inflatable waterslide | Inflatable waterpark | Wakeboards, waterskis & toys | Snorkelling gear | Golf driving range

TITANIA

FITNESS & WELLNESS



Cross trainer



Free weights



Multi gym



Personal trainer



Resistance trainer



Training bench



Treadmill



Upright stationary bike



Yoga mats



Beauty salon



Hair salon



Massage room



On board masseuse



Sauna

Air Conditioned Gym: Treadmill | Upright Stationary Bike | Cybex Cross Trainer | Nautilus Multi Gym | Adjustable Bench | Dumbbell rack with 1 set of dumbbells weight 6kg, 10kg, 12kg, 16kg, 20kg, 24kg, 26kg, 30kg | Hand weight pair 1 x 5kg, 1 x 4kg, 2 x 3kg, 1 x 1kg | Pair of hand Weighted balls 3 x 2kg | 2 x 3kg | Pair Ankle / wrist weights 2 x 2 kgs | 1 x 1kg | Yoga mats with bags x 5 | Small exercise Step. A massage room and beauty salon with an on board masseuse and beautician is available.

TITANIA

COMMUNICATION & ENTERTAINMENT



Satcom & cellular communications facilities



Wi-Fi internet access



Satellite television



Indoor cinema



Speaker systems



Disco set-up



Streaming services



Video games

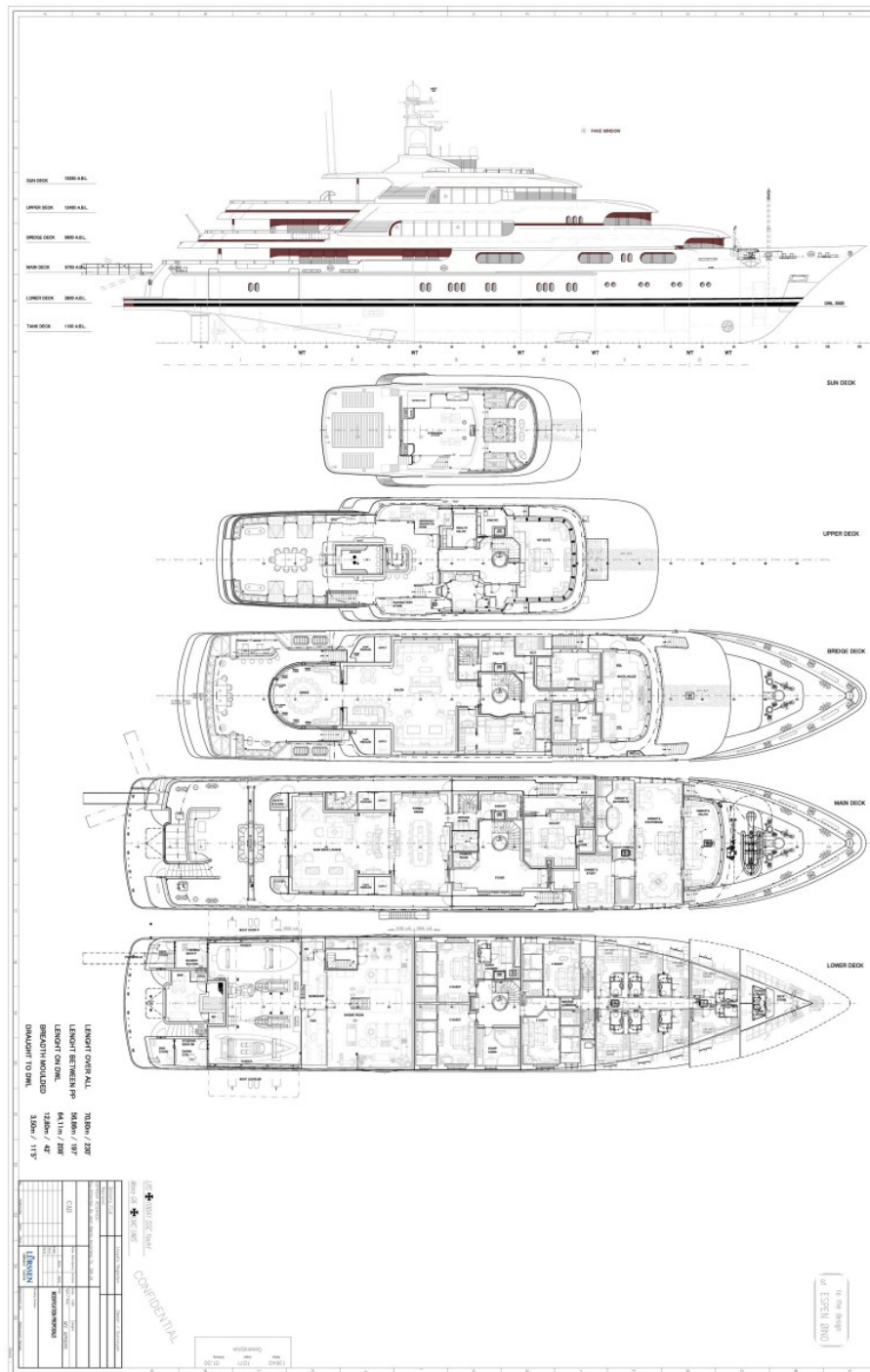


Karaoke



Piano

Large exterior TV screens on the Bridge deck and the Pool deck | Kaleidoscope | Music and DVD Library | DJ equipment | Comprehensive audio-visual systems and satellite television | Satcom & cellular communications facilities | VSAT | Wi-Fi internet access



BURGESS

WORLD CLASS. WORLD WIDE.

London +44 20 7766 4300	Monaco +377 97 97 81 21	New York +1 212 223 0410	Miami +1 305 672 0150	Singapore +65 9665 8990	Beverly Hills +1 310 424 5112	Palma +34 971 495 413	Athens +30 210 967 1661
Dubai +971 4 425 5874	Phuket +66 7623 9739	Hong Kong +852 6496 2094	Tokyo +81 46 738 8612	Sydney +61 499 945 557	Mumbai +91 98211 67253	Shanghai +86 187 0898 6800	Rio de Janeiro +55 21 2553-3238
Aspen +1 970 710 2294							

Advertising of these vessel(s) in printed publications, on the internet or in any other medium is not permitted without prior written permission from Burgess. All particulars are given in good faith and are believed correct but they cannot be guaranteed.

Last updated: 13 March 2025