

# THE WELLESLEY

---



THE WELLESLEY

# APERÇU.

**What if you could take your favourite boutique grand hotel experience to sea on a luxury superyacht? Now you can, with a charter on THE WELLESLEY, a floating extension of the eminent London establishment with vast deck spaces and a classically elegant ambiance.**

Wake early and head to the swim platform for a zen start to your day with a massage before joining the rest of the group for breakfast on the main deck aft. With the allure of the water too hard to resist, base your morning's activities out of the beach club, making use of the jetskis, kayaks, stand up paddleboards and SeaBobs, while a fun waterslide extends from the sun deck to the waterline for those with a head for heights. The expansive swim platform makes a great spot for a beach party, complete with freshly made cocktails and mocktails.

Savour a casual lunch of grilled seafood straight from the sun deck's BBQ, complete with 360 degree views of your tranquil anchorage. For a special occasion, the crew will be happy to put together a fun themed celebration for everyone, complete with entertainment and music.

After your busy morning, relax in the eight seater waterfall jacuzzi and surrounding sun pads, or head to the aft area to recline on a sun lounger while soaking up the views off the stern of the yacht. Enjoy a classic British afternoon tea for all 12 in the main lounge, perhaps while watching footage of the morning's watersports fun on the TV.

Originally built by Oceanco, THE WELLESLEY completed a full refit in 2016 and is resplendent in the same elegant Art Deco style as the hotel. At 40sqm (431sqft), she has masses of open deck space, making her a great option for special celebrations and events. Accommodating up to 12 guests, her full beam owner's suite has a large walk-in wardrobe, while a stately master suite, a VIP suite, a double cabin and two convertible twin cabins provide flexible accommodation for all manner of guest configurations. The guest cabins are consistent with the London hotel's amenities, and each features a Carrara marble en suite bathroom.

After an early dinner, the children take to the comfortable loungers to watch an outdoor movie screening on the sun deck while the grown-ups enjoy a delightful tasting menu in the chic formal dining room. You then retire to the Club Lounge to sample the yacht's connoisseur cigar collection from the bespoke humidor, alongside a cognac and round or two of cards.

## Principales caractéristiques

---

**Regularly maintained**

---

**Beach Club at sea level**

---

**Exercise equipment**

---

**9m ZAR custom towed tender available upon request**

---

**Two master cabins**

---

**On board masseuse**

---

**Flexible accommodation**

---

**Jacuzzi on the sun deck**

---

**Zero speed stabilisers to reduce any rolling motion while at anchor**

---

# THE WELLESLEY

Aerial view



Sun deck forward jacuzzi



Upper deck aft lounge



Beach club



# THE WELLESLEY

Main deck lounge



Main deck lounge



Main deck dining area



Club lounge



# THE WELLESLEY

Upper deck master cabin



Upper deck master bathroom en suite



Lower deck master cabin



Massage set up



THE WELLESLEY

# SPECIFICATIONS.



Longueur  
**56,2m**



Chantier  
**1993 (refitted 2020), Oceanco, The Netherlands**



Designer d'intérieur  
**Donald Starkey/David Irvine**



Largeur  
**9,1m**



Tirant d'eau  
**3,1m**



Tonnage brut  
**646**



Vitesse de croisière  
**13 knots**



Vitesse maximale  
**16 knots**



Consommation de carburant en vitesse de croisière  
**380 litres par heure**



Moteurs  
**2 x 1 530hp MTU**



Invités  
**12**



Nb de cabines invités  
**6 (4 x double, 2 x double/twin, 1 x additional berth)**



Équipage  
**12**

[Voir le yacht sur le site](#)  
[Regarder la vidéo du yacht](#)



THE WELLESLEY

# ANNEXES & JEUX NAUTIQUES



1 × Towed tender



1 × Tender



1 × Deck jacuzzi



2 × Waverunners



2 × SeaBobs



1 × eFoil



2 × Kayaks



2 × Stand up paddleboards



Surfboard



Wakeboard



Kneeboard



Waterskis



Waterslide



Inflatable toys



Fishing gear



RYA training centre for jetskis & waverunners



Golf

THE WELLESLEY

# REMISE EN FORME & BIEN-ETRE



Cross trainer



Free weights



Rowing machine



Suspension trainer



Training bench



Treadmill



Yoga mats

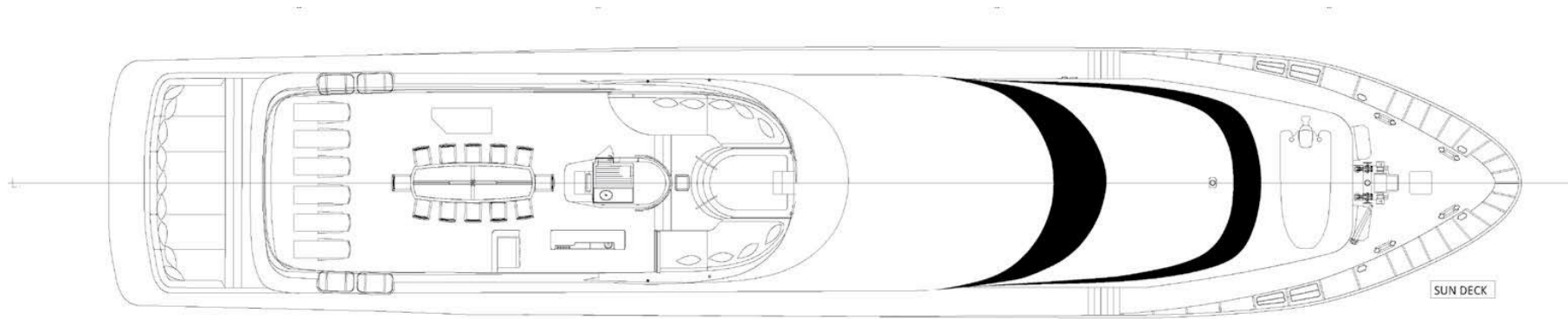


On board masseuse



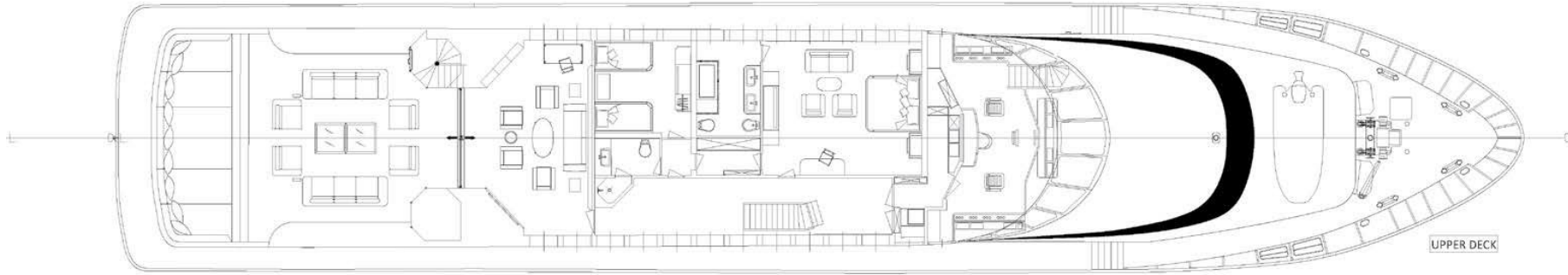
# THE WELLESLEY

Sun deck



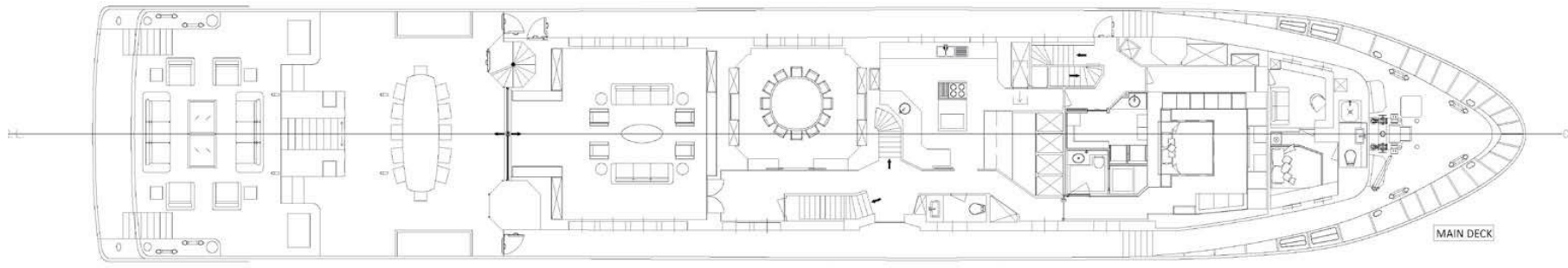
# THE WELLESLEY

Upper deck



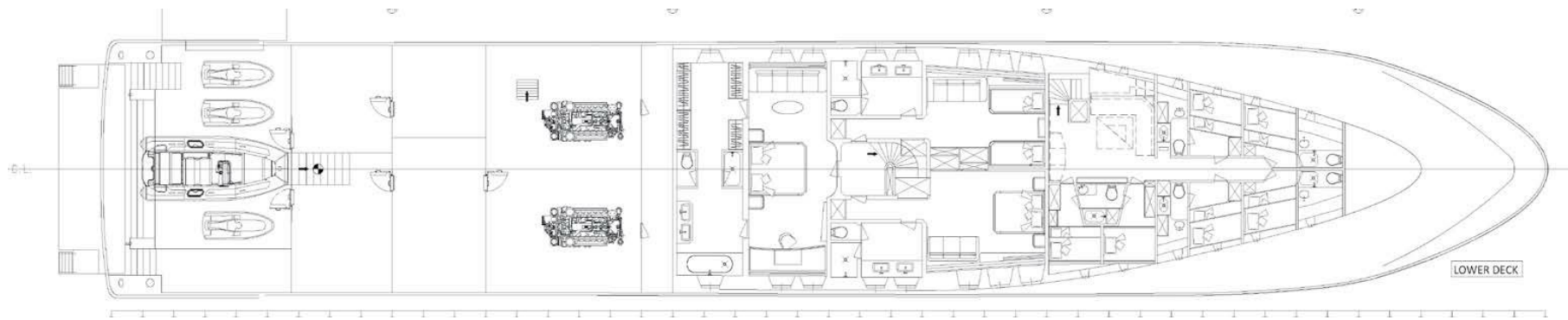
# THE WELLESLEY

Main deck



# THE WELLESLEY

Lower deck



# BURGESS

# WORLD CLASS. WORLD WIDE.

<b>London</b> +44 20 7766 4300	<b>Monaco</b> +377 97 97 81 21	<b>New York</b> +1 212 223 0410	<b>Miami</b> +1 305 672 0150	<b>Singapore</b> +65 9665 8990	<b>Beverly Hills</b> +1 310 424 5112	<b>Palma</b> +34 971 495 413	<b>Athens</b> +30 210 967 1661
<b>Dubai</b> +971 4 425 5874	<b>Phuket</b> +66 7623 9739	<b>Hong Kong</b> +852 6496 2094	<b>Tokyo</b> +81 46 738 8612	<b>Sydney</b> +61 499 945 557	<b>Mumbai</b> +91 98211 67253	<b>Shanghai</b> +86 187 0898 6800	<b>Rio de Janeiro</b> +55 21 2553-3238
<b>Aspen</b> +1 970 710 2294							

La publicité de ce(s) navire(s) dans des publications imprimées, sur Internet ou sur tout autre support n'est pas autorisée sans l'autorisation écrite préalable de Burgess.  
Toutes les informations sont données de bonne foi et sont considérées comme exactes, mais elles ne peuvent être garanties.

Dernière mise à jour : 28 février 2025