

# TALISMAN C

---



TALISMAN C

# SPECIFICATION.



Asking price  
EUR 55,000,000 (EU VAT paid)



Built  
2011, Proteksan Turquoise, Turkey



Length  
70.6m (231.6ft)



Beam  
12.1m (39.7ft)



Draft  
4m (13.1ft)



Gross tonnage  
1,560



Cruising speed  
15 knots



Maximum speed  
18 knots



Range  
7,000 nm



Flag  
Cayman Islands



Lying  
West Mediterranean



Class  
Lloyd's Register (LR) ✕ 100 A1 SSC, Yacht, Mono,  
G6 ✕ LMC UMS



Exterior designer  
H2 Yacht Design



Interior designer  
H2 Yacht Design



Construction  
Hull - Steel, Superstructure - Aluminium



Crew  
20



Guests  
14



Cabins  
6 (4 x double, 2 x twin, 2 x additional berths)



Engines  
2 x 2,447hp Caterpillar



Propulsion  
Twin screw diesel yacht

## Note

Not available for sale to US residents while in US waters.

[View yacht on website](#)





# TALISMAN C

Cruising



Main deck lounge



Main deck lounge



Main deck lounge





TALISMAN C

Main deck dining area



Owner's cabin



Owner's suite



Owner's cabin





TALISMAN C

Owner's bathroom en suite



Owner's dressing room



VIP suite



Staircase





TALISMAN C

Double cabin



Double cabin



Double cabin bathroom en suite



Twin cabin





TALISMAN C

Sky lounge



Gym



Wellness area



Sun deck aft





TALISMAN C

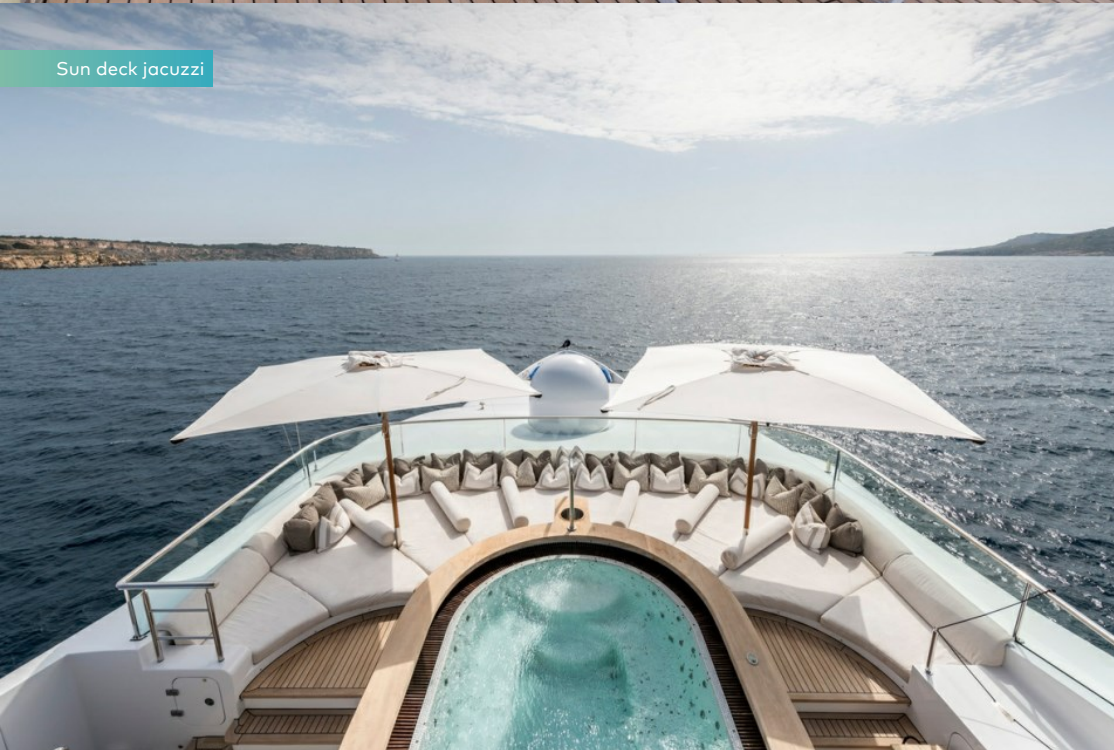
Sun deck dining area



Sun deck jacuzzi



Sun deck jacuzzi



Upper deck aft dining area





# TALISMAN C

Upper deck aft dining area



Bridge deck seating area



Main deck aft



Swim platform





TALISMAN C

Aerial view





# OVERVIEW.

The 70.6m (231.6ft) TALISMAN C has a steel hull and aluminium superstructure constructed to Lloyd's classification and MCA compliance by Turkish shipyard Proteksan Turquoise and delivered in 2011. She is designed inside and out by London-based studio H2 Yacht Design and engineered by Italian naval architect Hydro Tec.

Exterior deck spaces include sun beds on the crow's nest observation lounge above the hardtop with glass bulwarks to block the breeze while preserving the views. Wonderful sightlines are a feature throughout this yacht.

Her sun deck has a large glass-backed jacuzzi forward flanked by sunpads, a sit-up bar, day bed and dining beneath the hardtop and plenty of sunpads. There is more open-air dining, also served by a sit-up bar, on the spacious upper deck aft with two L-shaped sun lounges beyond the overhang. Walkaround sidedecks enable guests to immerse themselves in their surroundings.

The main deck aft has sun lounge seating and steps up to a sunpad overlooking the swim platform. A central stairway leads down to the beach club with dayhead and a large swim platform created when the transom folds down.

From the main deck aft, curved sliding glass doors lead into a fully equipped bar area with club seating, a saloon with sofa and armchair seating around a coffee table and a formal dining area with a feature glass-thread chandelier.

There is a dayhead off the main lobby and a gym and wellness area with massage table and beauty salon to starboard off a corridor leading to the VIP and owner's suites. Spiral stairs wind around an intricate glass sculpture brought to life by natural light from a sun deck skylight.

The sky lounge has a seating area and gaming table, and sliding glass doors open onto the aft deck entertainment area. Forward of the upper deck lobby there is a media room with a 42in TV and Playstation.

TALISMAN C welcomes 12 guests in six cabins. The owner's suite is forward-facing on the main deck and has a boudoir décor with voile curtains around the king-sized bed, and crystal chandeliers as bedside reading lights. An en suite shows off glossy two-tone wood veneers and gold mosaic tiles around a spa bath and shower room. There's a huge walk-in wardrobe and an owner's private library (which can be converted to an additional cabin). The VIP suite is aft of the owner's suite. On the lower deck the rest of the guest cabins are no less stylish, with two twin cabins and two double cabins also have spa bath en suites.

Twin 2,447hp Caterpillar diesel engines give her a top speed is 18 knots, a cruising speed of 15 knots and a transatlantic range of 7,000nm at her passage speed of 12 knots. A full-beam tender and toy garage aft on the lower deck launches 7.7m (25.3ft) Ski Nautique and 7m (23ft) Novurania tenders through shell doors either side.

## Key features

---

EU VAT paid

---

H2 Design exterior and interior design

---

Split level master cabin with private library

---

Large full beam tender garage housing all tenders and water toys

---

Observation deck with panoramic views

---

Transoceanic range of 7,000 nautical miles

---

Fully equipped gym and spa

---

Top speed of 18 knots

---

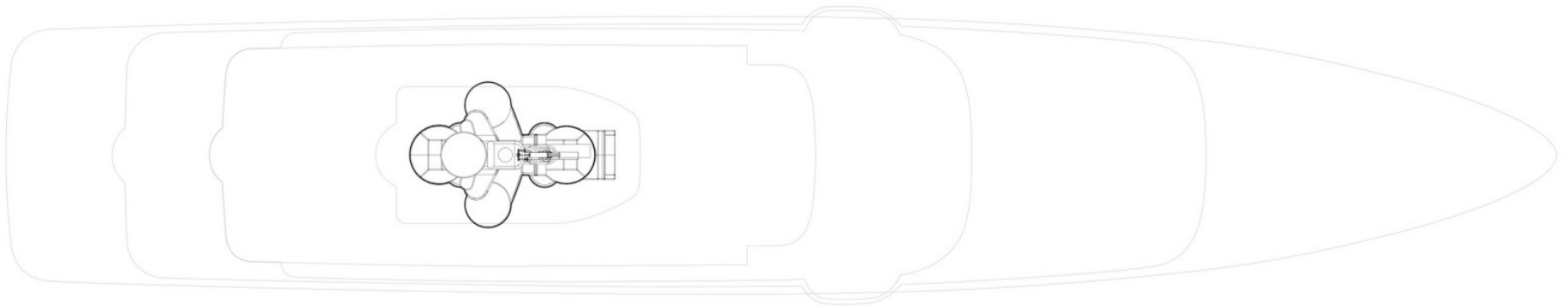
## Tenders

---

7.7m Ski nautique - super air nautique with 230hp engine, 7m Novurania chase 23 with 220hp engine, 4.3m Narhwal rescue tender with Yamaha engine



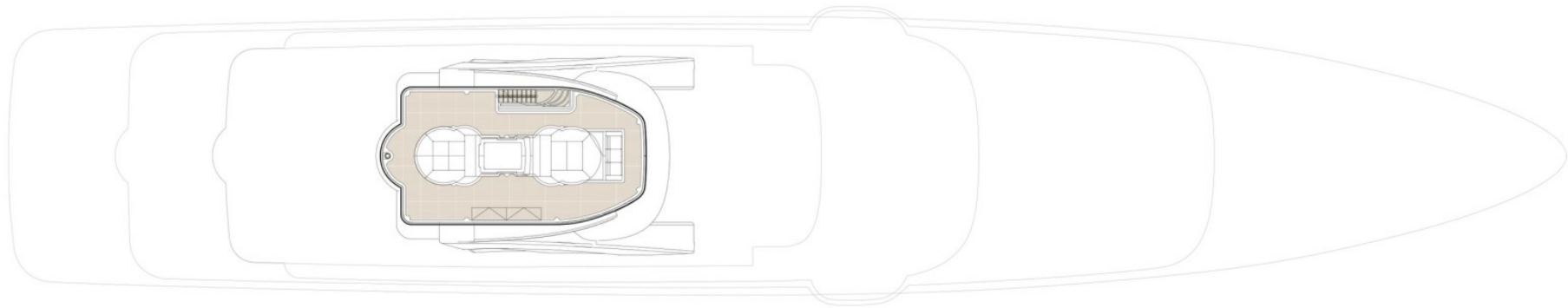
# MAST



- GUEST AREAS
- OWNER'S SUITE
- VIP SUITES
- GUEST CABINS
- OWNER'S OFFICE
- GYM
- JACUZZI



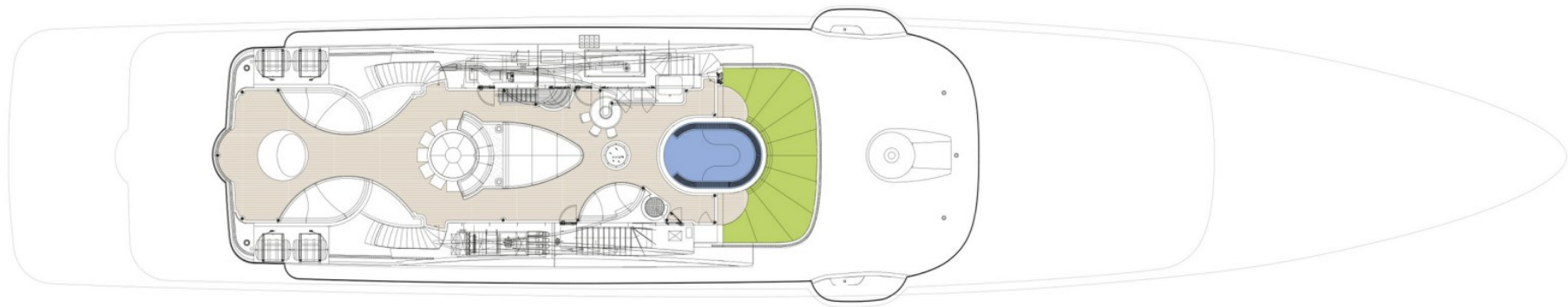
# HARDTOP



- GUEST AREAS
- OWNER'S SUITE
- VIP SUITES
- GUEST CABINS
- OWNER'S OFFICE
- GYM
- JACUZZI



# SUN DECK



- GUEST AREAS
- OWNER'S SUITE
- VIP SUITES
- GUEST CABINS
- OWNER'S OFFICE
- GYM
- JACUZZI



# UPPER DECK



- GUEST AREAS
- OWNER'S SUITE
- VIP SUITES
- GUEST CABINS
- OWNER'S OFFICE
- GYM
- JACUZZI



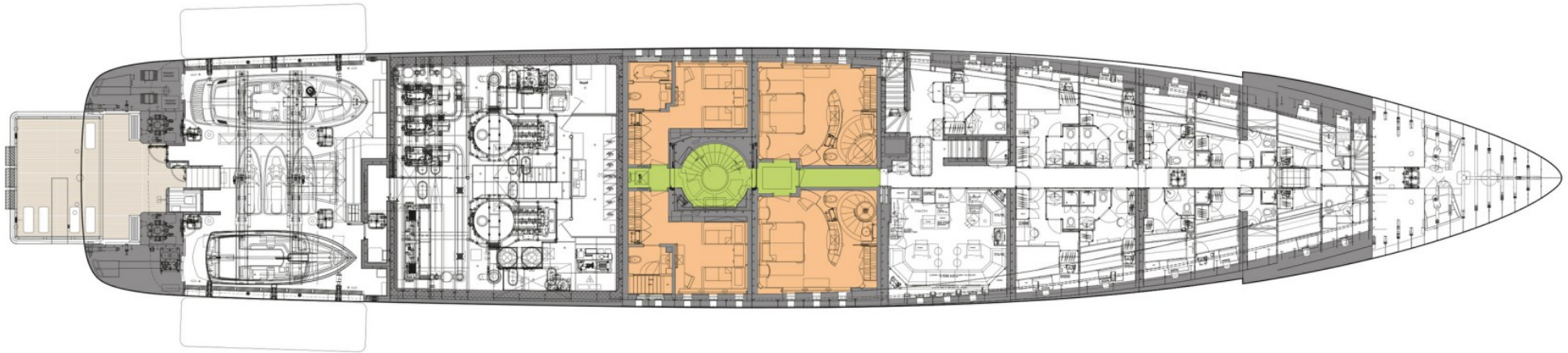
# MAIN DECK



- GUEST AREAS
- OWNER'S SUITE
- VIP SUITES
- GUEST CABINS
- OWNER'S OFFICE
- GYM
- JACUZZI



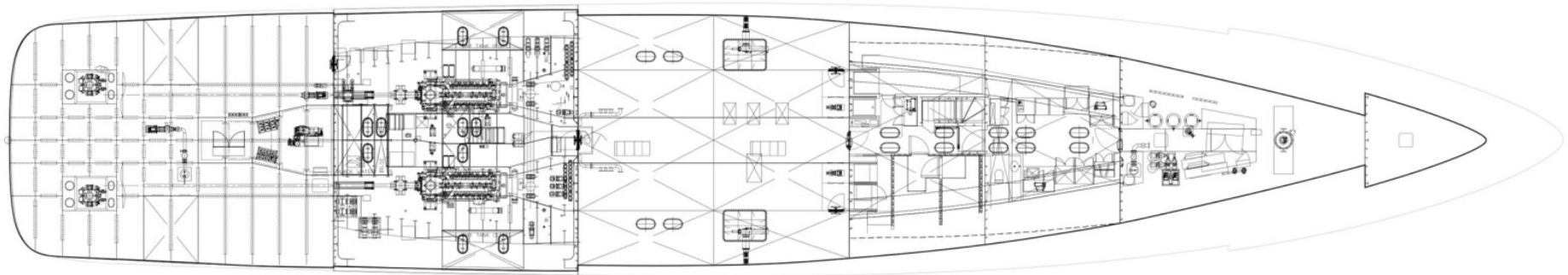
# LOWER DECK



- GUEST AREAS
- OWNER'S SUITE
- VIP SUITES
- GUEST CABINS
- OWNER'S OFFICE
- GYM
- JACUZZI



# BILGE DECK



- GUEST AREAS
- OWNER'S SUITE
- VIP SUITES
- GUEST CABINS
- OWNER'S OFFICE
- GYM
- JACUZZI



# BURGESS

# WORLD CLASS. WORLD WIDE.

London +44 20 7766 4300	Monaco +377 97 97 81 21	New York +1 212 223 0410	Miami +1 305 672 0150	Singapore +65 9665 8990	Beverly Hills +1 310 424 5112	Palma +34 971 495 413	Athens +30 210 967 1661
	Dubai +971 4 425 5874	Phuket +66 7623 9739	Hong Kong +852 6496 2094	Tokyo +81 46 738 8612	Sydney +61 499 945 557	Mumbai +91 98211 67253	

---

Advertising of these vessel(s) in printed publications, on the internet or in any other medium is not permitted without prior written permission from Burgess. All particulars are given in good faith and are believed correct but they cannot be guaranteed.

Last updated: 09 April 2024