

TALEYA



TALEYA

OVERVIEW.

TALEYA lives up to her name. This 55m (180.5ft) yacht combines performance and luxury in an exquisitely designed package, with wide decks and generous cabins for you and your guests. With a host of water toys, huge cinema screen and dedicated crew, TALEYA sets the bar high.

Six cabins are laid out over the main and lower deck to take 12 guests. You will wake from a sound night's sleep, thanks to the yacht's zero speed stabilisers, with views of the sea peeping in your windows. Step out of your king-sized bed into soft carpet en route to your his and hers bathrooms. The whole room is light, modern and chic – and this parred-back décor continues throughout the yacht.

Slip on something light and easy, then head to the aft main deck for breakfast, enjoying the warm teak underfoot on your way. Al fresco breakfasts are a relaxed affair, but chef takes pride in catering for his guests, and crew are ready to take your order. There is a 1:1 ratio of crew to guests on board.

Over fluffy omelettes and fresh bread, talk turns to the days' itinerary: your captain is setting a course to a secret cove nestled among the cliffs. Once there the watertoys will come out to play!

While underway some go to find the high-tech gym to get in an early workout, others pop up to the sun deck to tan on the loungers. The children want to go with a crew member in one of the yacht's two tenders to try their luck at fishing, you know that they are in very safe hands with TALEYA's experienced crew – they may even bring back a catch for lunch.

You join the captain on the bridge as the yacht noses gently into the smooth waters of the cove and drops anchor. Soon the swim platform is set up and the jetskis, canoes, SUP, wakeboards and waterskis are ready to use – it will take all week to try it all out. During her refit in 2017 the swimming platform astern was extended and a hydraulic swim ladder added - it drops right down into the water for gold-standard safety.

At the end of the day, you all meet in the foredeck jacuzzi to watch the sun set. With a glass in hand, relax back in the bubbles. Later you will dress for dinner as chef has prepared a tasting menu with paired wines - while the children have their own party in the sky lounge with 220in cinema screen.

A charter aboard TALEYA really has it all.

Key features

Opus 12 chase tender

Hydraulic steps on the swim platform

Fully equipped gym

Elevator serving all decks

Jacuzzi on the sun deck

Zero speed stabilisers to reduce any rolling motion while at anchor

TALEYA

Aerial view



Bow view



Dining



Sun deck jacuzzi



TALEYA

Sun deck jacuzzi



Sun deck



Upper deck aft



Main deck aft



TALEYA

Main deck lounge



Main deck dining



Sky lounge



Sky lounge



BURGESS

Discover the difference.
burgessyachts.com



TALEYA

Master cabin



Master cabin study



Master cabin en suite



VIP cabin



BURGESS

Discover the difference.
burgessyachts.com



TALEYA

VIP cabin en suite



Double cabin



Double cabin



Double cabin



BURGESS

Discover the difference.
burgessyachts.com



TALEYA

Twin cabin



Geust cabin en suite



massage table



gym



TALEYA

Watertoys



Tender



Aerial view



At anchor
















BURGESS

Discover the difference.
burgessyachts.com



TALEYA

SPECIFICATION.

 Length 53.3m (180.4ft)	 Guests 12
 Built 2008 (refitted 2017), Rossinavi, Italy	 No. of guest cabins 6 (4 × double, 1 × double/twin, 1 × twin)
 Interior designer Cristiano Gatto Design	 Crew 14
 Beam 10m (32.8ft)	View yacht on website Watch yacht video
 Draft 3m (9.8ft)	
 Gross tonnage 736	
 Cruising speed 13 knots	
 Maximum speed 17 knots	
 Fuel consumption at cruising speed 250 litres per hour	
 Engines 2 × 2,200hp Caterpillar	



BURGESS

Discover the difference.
burgessyachts.com



TALEYA

TENDERS & TOYS



1 × Towed tender



1 × Tender



1 × Deck jacuzzi



2 × Waverunners



2 × SeaBobs



1 × eFoil



2 × Kayaks



2 × Stand up paddleboards



Wakeboard



Waterskis



Waterslide



Inflatable tows

TALEYA

FITNESS & WELLNESS



Cardio wave side stepper



Cross trainer



Free weights



Training bench



Treadmill



Upright stationary bike



TALEYA

COMMUNICATION & ENTERTAINMENT



Satellite television



Streaming services



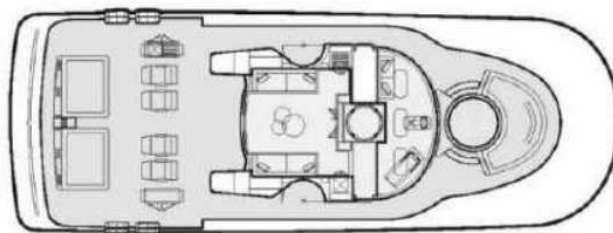
Video games

BURGESS

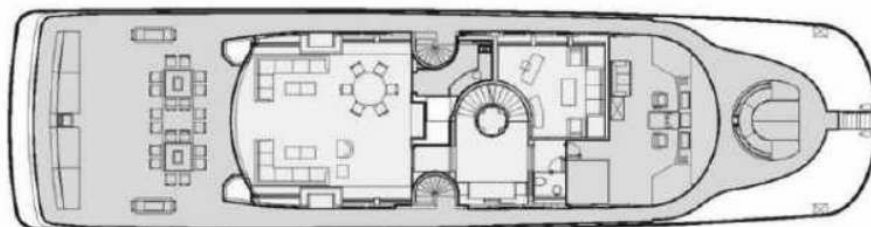
Discover the difference.
burgessyachts.com



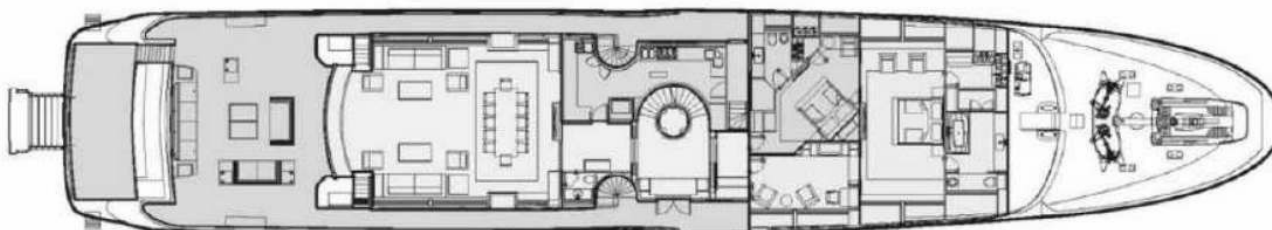
DECK PLANS



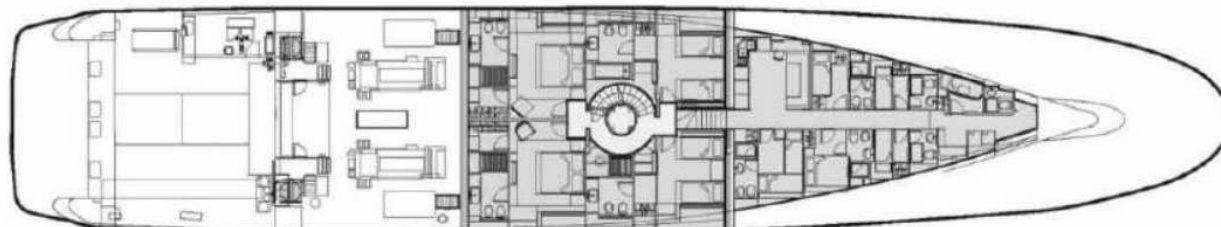
SUN DECK



BRIDGE DECK



MAIN DECK



LOWER DECK

BURGESS

WORLD CLASS. WORLD WIDE.

London +44 20 7766 4300	Monaco +377 97 97 81 21	New York +1 212 223 0410	Miami +1 305 672 0150	Singapore +65 9665 8990	Beverly Hills +1 310 424 5112	Palma +34 971 495 413	Athens +30 210 967 1661
Dubai +971 4 425 5874	Phuket +66 7623 9739	Hong Kong +852 6496 2094	Tokyo +81 46 738 8612	Sydney +61 499 945 557	Mumbai +91 98211 67253	Shanghai +86 159 0162 1898	Rio de Janeiro +55 21 2553-3238
Aspen +1 970 710 2294							

Advertising of these vessel(s) in printed publications, on the internet or in any other medium is not permitted without prior written permission from Burgess. All particulars are given in good faith and are believed correct but they cannot be guaranteed.

Last updated: 23 April 2025