

# SYNTHESIS

---



## SYNTHESIS

# SPECIFICATIONS.



Prix demandé  
**EUR 132 000 000**



Chantier  
**2021 (refitted 2026), Amels, The Netherlands**



Longueur  
**74m**



Largeur  
**12,5m**



Tirant d'eau  
**3,9m**



Tonnage brut  
**1 790**



Vitesse de croisière  
**14 knots**



Vitesse maximale  
**16,5 knots**



Pavillon  
**Marshall Islands**



Position  
**West Mediterranean**



Classe  
**Lloyd's Register (LR) 100A1, SSC Yacht, Mono G6, LMC, UMS, IHM EU**



Designer extérieur  
**Tim Heywood**



Designer d'intérieur  
**Winch Design**



Construction  
**Hull - Steel, Superstructure - Aluminium**



Équipage  
**Up to 23**



Invités  
**14**



Cabines  
**6 (5 x double, 1 x twin, 2 x additional berths)**



Moteurs  
**2 x 2 682hp Caterpillar**



Propulsion  
**Twin screw diesel yacht**

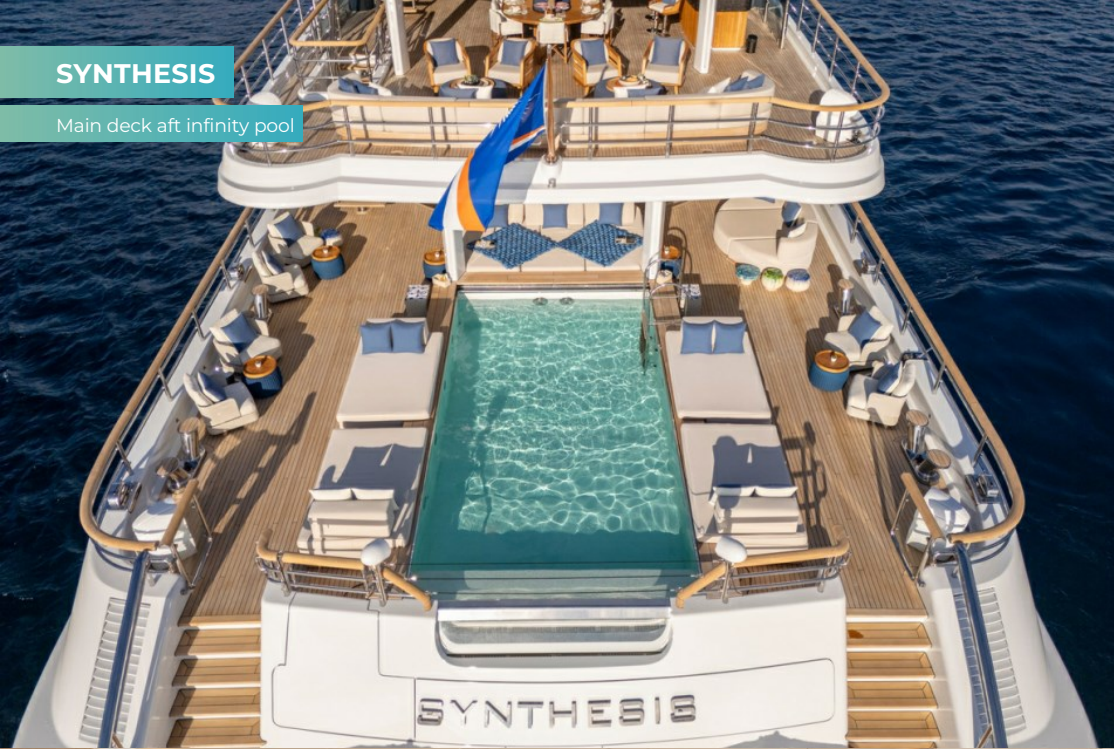
[Voir le yacht sur le site](#)

[Regarder la vidéo du yacht](#)



# SYNTHESIS

Main deck aft infinity pool



Main deck aft infinity pool



Main deck lounge



Main deck lounge & bar



SYNTHESIS

Main deck lounge



Main deck foyer with elevator



Owner's deck master cabin



Owner's deck master cabin



# SYNTHESIS

Owner's deck jacuzzi



Owner's deck jacuzzi



Owner's deck master his & hers bathroom



Owner's deck master his & hers bathroom



SYNTHESIS

Owner's deck office



Owner's deck lounge



Owner's deck lounge



Owner's deck lounge



SYNTHESIS

Main deck VIP cabin



Main deck VIP cabin



Main deck VIP cabin bathroom



Main deck VIP cabin



SYNTHESIS

Main deck VIP cabin



Main deck VIP cabin closet



Lower deck twin convertible cabin



Lower deck twin convertible cabin



**SYNTHESIS**

Lower deck guest bathroom



Lower deck twin convertible cabin



Lower deck guest bathroom



Lower deck wellness area

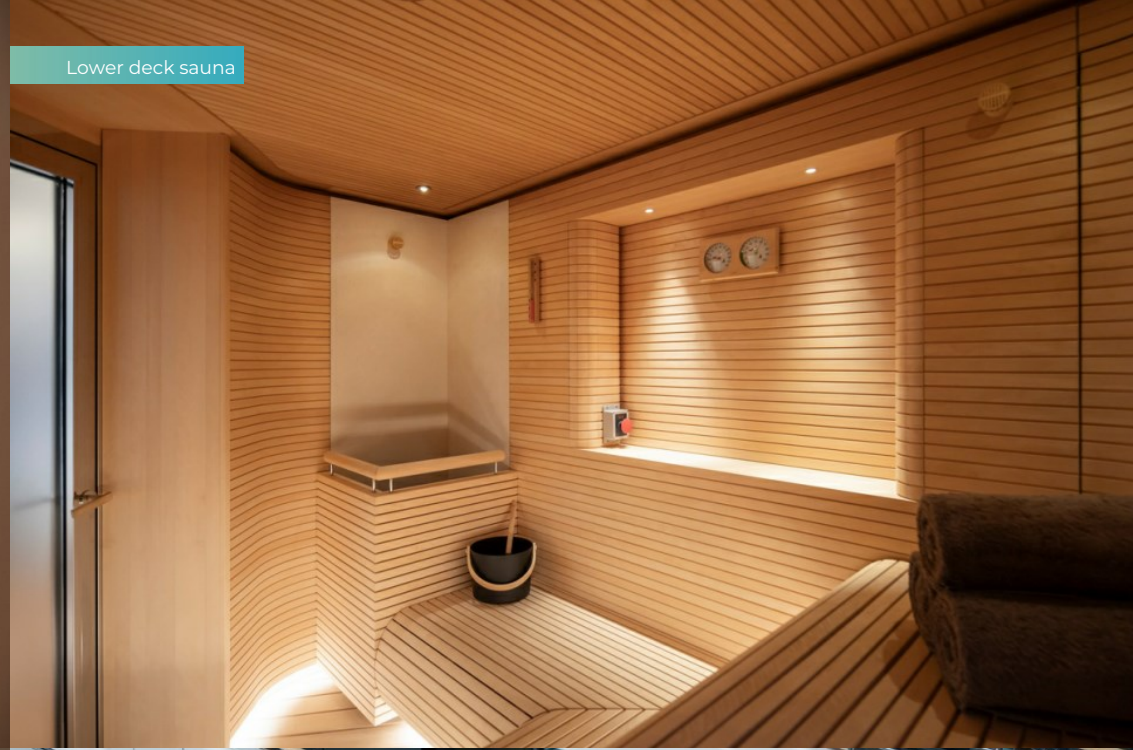


## SYNTHESIS

Lower deck massage room



Lower deck sauna



Lower deck hammam



Lower deck wellness area sea terrace



**SYNTHESIS**

Sundeck jacuzzi



Bridge deck dining room



Bridge deck aft bar



Bridge deck aft seating / helipad



## SYNTHESIS

Bridge deck aft open air cinema



Owner's deck al fresco dining



Owner's deck aft seating



Main deck aft infinity pool



# SYNTHESIS

Aerial view of aft decks



Stern view



Port side view



Aerial view



# SYNTHESIS

Aerial view at dusk



SYNTHESIS

# APERÇU.

**SYNTHESIS is an Amels 242 Limited Edition yacht delivered in 2021, the fifth yacht of this highly sought-after customised series, with significant upgrades completed at Oceanco in 2023 and Amels in 2025/26, the latter including her five-year special survey and full exterior repaint.**

Combining award-winning Winch Design interiors with Tim Heywood exteriors, the impressive 1,790GT offers exceptional volume for her length, creating a sense of space that sets her apart in the 70m market.

Departing from the traditional yacht layout, dining and entertaining spaces are arranged across several decks rather than centred around a single formal room, giving SYNTHESIS a relaxed, residential feel on board.

Complementing this layout, Winch Design's interiors incorporate rare materials – from satin ivory oak flooring to honed botticino fioriti stone in the bathrooms – alongside carefully considered lighting, creating a refined yet welcoming atmosphere. Large windows flood the guest areas with natural light, enhancing the connection to the sea.

This design approach earned SYNTHESIS the award for Best Interior Design, Motor Yachts 500GT and Above at the 2022 BOAT Design & Innovation Awards.

The sun deck is an inviting space for open-air relaxation, with a forward jacuzzi framed by sunpads and informal seating. Just below, the bridge deck aft helipad transforms into a versatile space for entertainment, ideal as an outdoor cinema or private terrace with sofas and a bar.

For al fresco dining, the owner's deck provides a more formal setting, while the main deck features a large aft infinity pool surrounded by generous lounging areas, with a seamless connection to the main lounge, bar and TV space indoors.

SYNTHESIS accommodates up to 14 guests across six beautifully appointed cabins, including two forward main deck VIP suites and two doubles (one with a pullman and one convertible into a twin) and one twin cabin that can also convert into a double, complete with a pullman berth.

A dedicated owner's deck features a forward-facing master cabin with panoramic full-height windows, opening onto a private foredeck with a jacuzzi and sunbathing areas. Also on this deck are a private office and lounge.

The lower deck amidships is dedicated to wellness, with a spa featuring a pool, sauna, hammam, massage room and juice bar, plus direct access to the sea via a fold-out balcony.

SYNTHESIS offers proven performance with a 16.5-knot top speed, 5,000nm range and two sets of zero-speed stabilisers for enhanced comfort underway and at anchor. Well-equipped throughout and with spacious garages containing an outstanding selection of toys and tenders, including multiple WaveRunners, SeaBobs, eFoils and a range of inflatables, along with an 8.8m Pascoe SY9 Beachlander and a 9.1m Yachtwerft Meyer limousine tender. SYNTHESIS is a true turnkey option, presenting in immaculate condition for a new Owner.

## Principales caractéristiques

---

**Fifth hull in the Amels 242 limited edition series**

---

**Full private owner's deck with master suite, private foredeck, jacuzzi, office and lounge**

---

**Accommodation for up to 14 guests in 6 cabins (2 pullman berths)**

---

**Main deck aft infinity pool**

---

**Lower deck wellness area with spa plunge pool, sauna, hammam and massage room**

---

**Bridge deck helipad**

---

**Five-year special survey completed, including full exterior repaint**

---

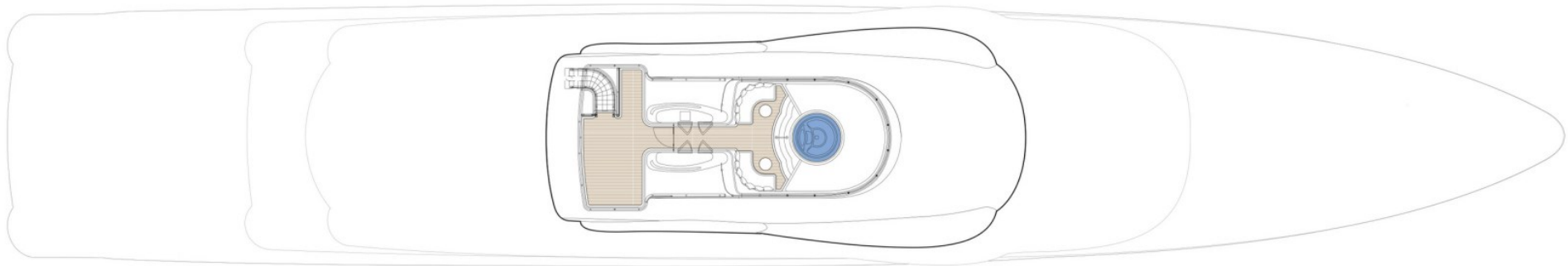
**Spacious tender garage**

---

**Glass elevator serving guest decks**

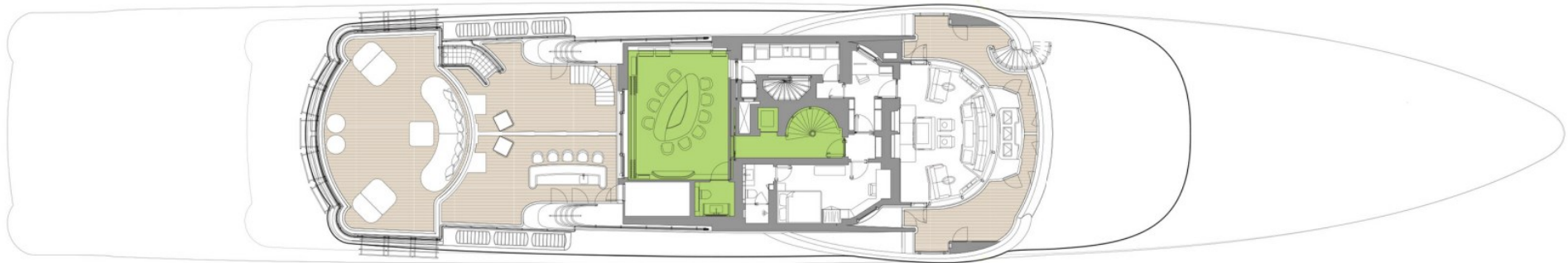
---

# SUN DECK



- GUEST AREAS
- MASTER SUITE
- GUEST CABINS
- MASTER SUITE OFFICE
- MASSAGE SUITE
- BEAUTY SALON
- SPA
- HAMMAM
- SAUNA
- JACUZZI
- POOL

# BRIDGE DECK



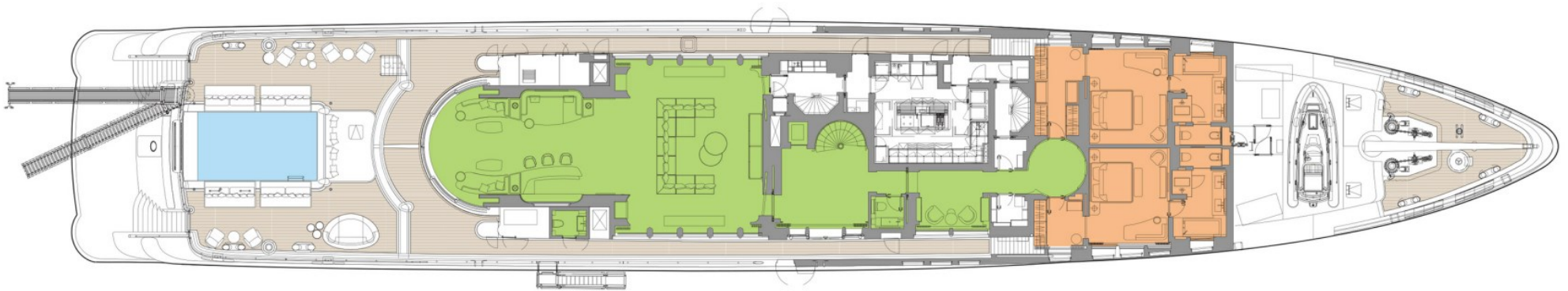
■ GUEST AREAS ■ MASTER SUITE ■ GUEST CABINS ■ MASTER SUITE OFFICE ■ MASSAGE SUITE ■ BEAUTY SALON ■ SPA ■ HAMMAM ■ SAUNA ■ JACUZZI ■ POOL

# OWNER'S DECK



■ GUEST AREAS ■ MASTER SUITE ■ GUEST CABINS ■ MASTER SUITE OFFICE ■ MASSAGE SUITE ■ BEAUTY SALON ■ SPA ■ HAMMAM ■ SAUNA ■ JACUZZI ■ POOL

# MAIN DECK



■ GUEST AREAS ■ MASTER SUITE ■ GUEST CABINS ■ MASTER SUITE OFFICE ■ MASSAGE SUITE ■ BEAUTY SALON ■ SPA ■ HAMMAM ■ SAUNA ■ JACUZZI ■ POOL

# LOWER DECK



■ GUEST AREAS ■ MASTER SUITE ■ GUEST CABINS ■ MASTER SUITE OFFICE ■ MESSAGE SUITE ■ BEAUTY SALON ■ SPA ■ HAMMAM ■ SAUNA ■ JACUZZI ■ POOL

# TANK DECK



# BURGESS

# WORLD CLASS. WORLD WIDE.

<b>London</b> +44 20 7766 4300	<b>Monaco</b> +377 97 97 81 21	<b>New York</b> +1 212 223 0410	<b>Miami</b> +1 305 672 0150	<b>Singapore</b> +65 9665 8990	<b>Beverly Hills</b> +1 310 424 5112	<b>Palma</b> +34 971 495 413	<b>Athens</b> +30 210 967 1661
<b>Dubai</b> +971 4 425 5874	<b>Phuket</b> +66 8257 01150	<b>Hong Kong</b> +852 6496 2094	<b>Tokyo</b> +81 46 738 8612	<b>Sydney</b> +61 499 945 557	<b>Mumbai</b> +91 98211 67253	<b>Shanghai</b> +86 159 0162 1898	<b>Rio de Janeiro</b> +55 21 2553-3238
		<b>Aspen</b> +1 970 710 2294	<b>Guernsey</b> +44 1481 735360	<b>Palm Beach</b> +1 561 973 2768			

La publicité de ce(s) navire(s) dans des publications imprimées, sur Internet ou sur tout autre support n'est pas autorisée sans l'autorisation écrite préalable de Burgess.  
Toutes les informations sont données de bonne foi et sont considérées comme exactes, mais elles ne peuvent être garanties.

Dernière mise à jour : 16 juin 2026