

SYNTHESIS



SYNTHESIS

SPECIFICATION.



Asking price
EUR 132,000,000



Built
2021 (refitted 2026), Amels, The Netherlands



Length
74m (242.7ft)



Beam
12.5m (41ft)



Draft
3.9m (12.8ft)



Gross tonnage
1,790



Cruising speed
14 knots



Maximum speed
16.5 knots



Flag
Marshall Islands



Lying
West Mediterranean



Class
Lloyd's Register (LR) 100A1, SSC Yacht, Mono G6, LMC, UMS, IHM EU



Exterior designer
Tim Heywood



Interior designer
Winch Design



Construction
Hull - Steel, Superstructure - Aluminium



Crew
Up to 23



Guests
14



Cabins
6 (5 x double, 1 x twin, 2 x additional berths)



Engines
2 x 2,682hp Caterpillar



Propulsion
Twin screw diesel yacht

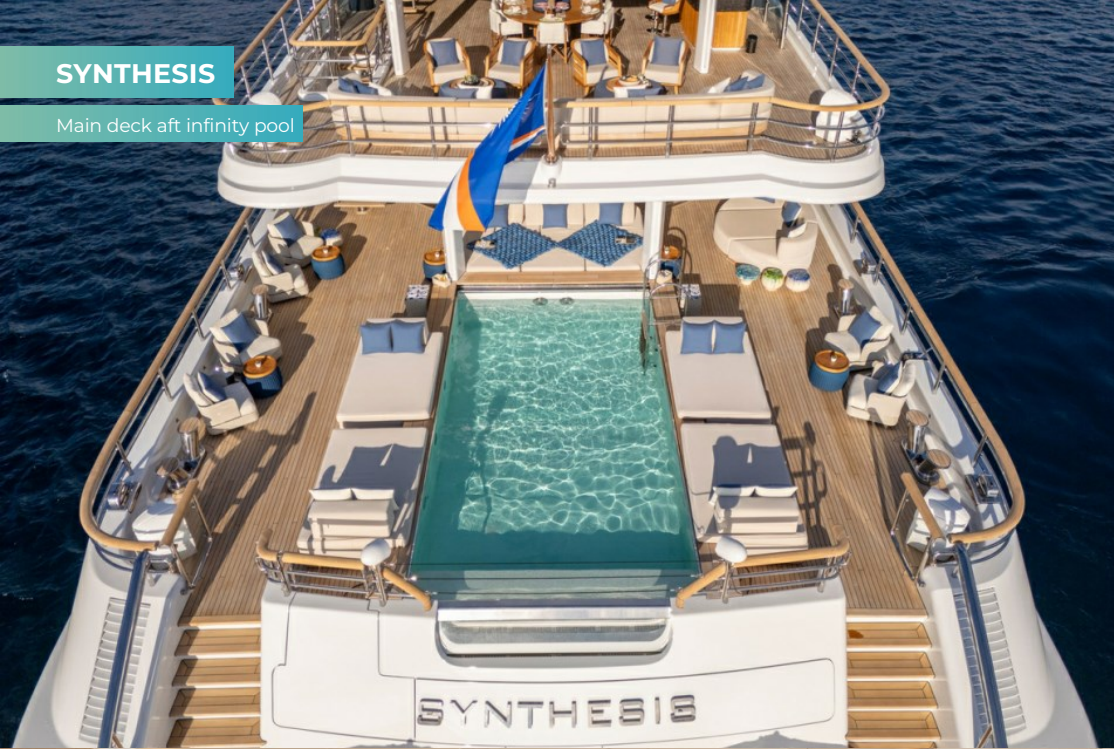
[View yacht on website](#)

[Watch yacht video](#)



SYNTHESIS

Main deck aft infinity pool



Main deck aft infinity pool



Main deck lounge



Main deck lounge & bar



SYNTHESIS

Main deck lounge



Main deck foyer with elevator



Owner's deck master cabin



Owner's deck master cabin



SYNTHESIS

Owner's deck jacuzzi



Owner's deck jacuzzi



Owner's deck master his & hers bathroom



Owner's deck master his & hers bathroom



SYNTHESIS

Owner's deck office



Owner's deck lounge



Owner's deck lounge



Owner's deck lounge



SYNTHESIS

Main deck VIP cabin



Main deck VIP cabin



Main deck VIP cabin bathroom



Main deck VIP cabin



SYNTHESIS

Main deck VIP cabin



Main deck VIP cabin closet



Lower deck twin convertible cabin



Lower deck twin convertible cabin



SYNTHESIS

Lower deck guest bathroom



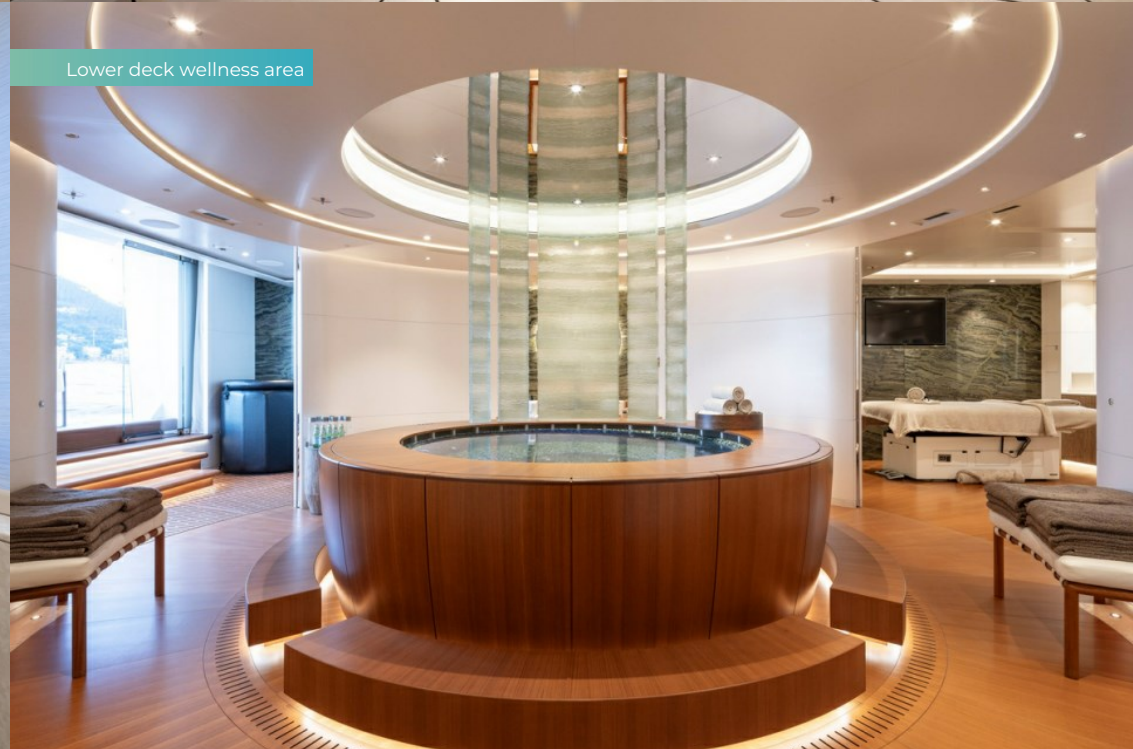
Lower deck twin convertible cabin



Lower deck guest bathroom



Lower deck wellness area

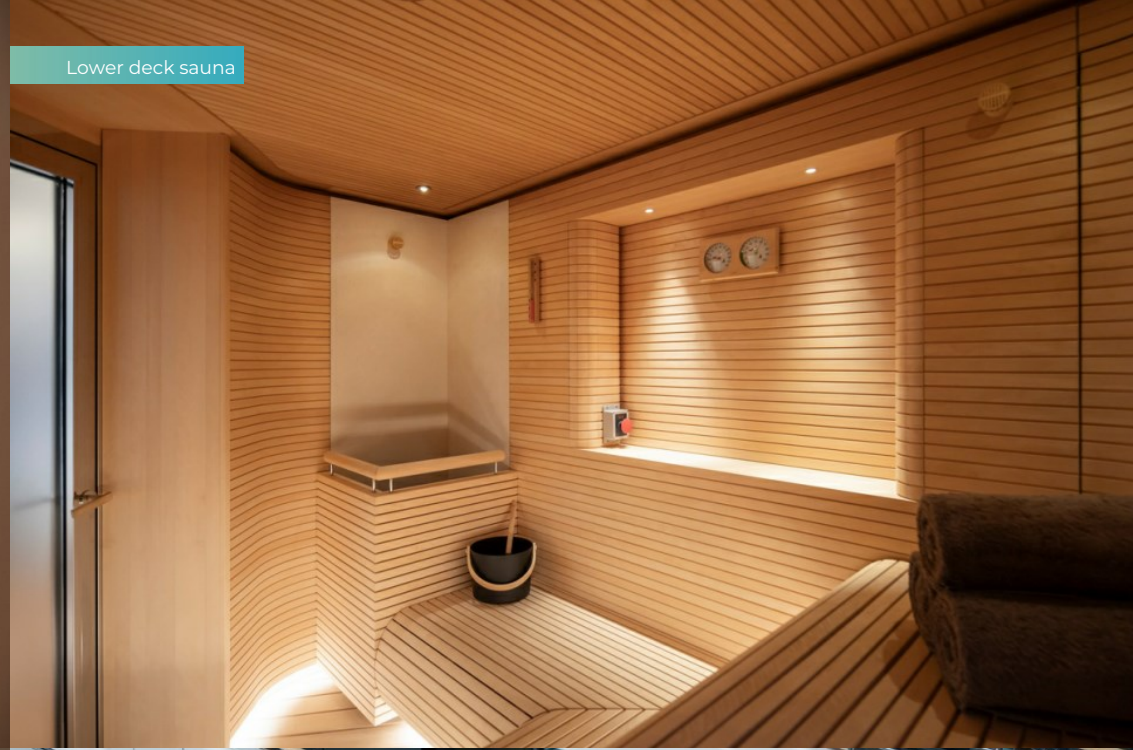


SYNTHESIS

Lower deck massage room



Lower deck sauna



Lower deck hammam



Lower deck wellness area sea terrace



SYNTHESIS

Sundeck jacuzzi



Bridge deck dining room



Bridge deck aft bar



Bridge deck aft seating / helipad



SYNTHESIS

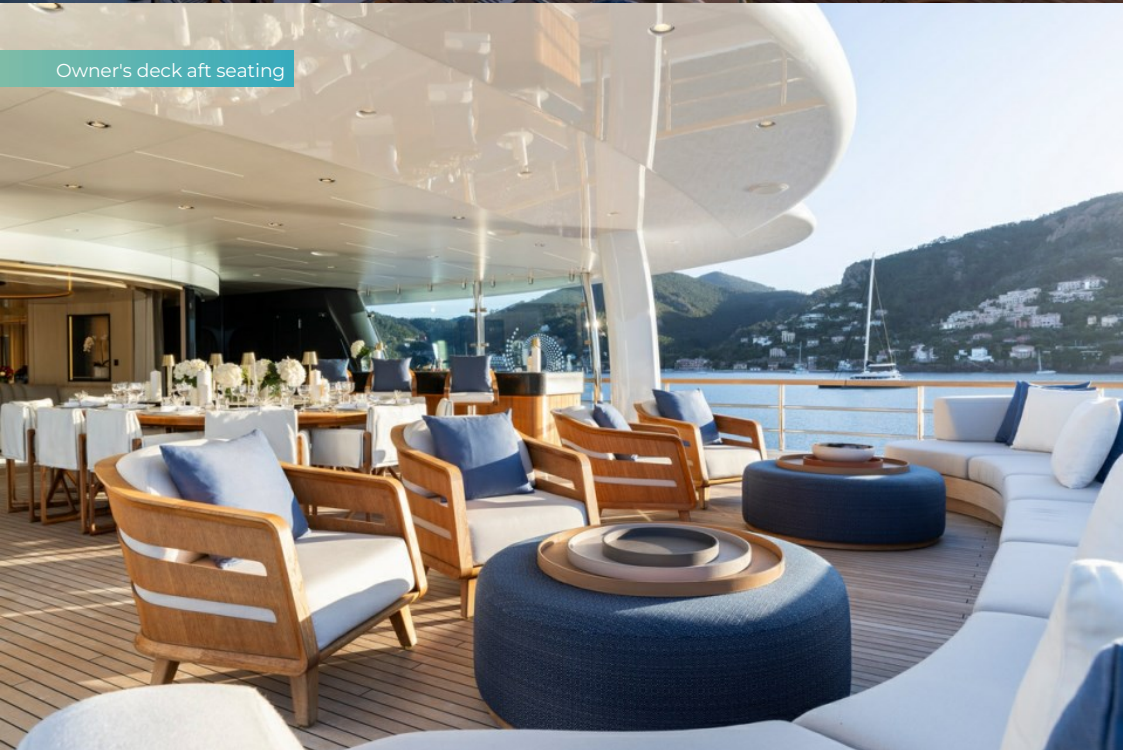
Bridge deck aft open air cinema



Owner's deck al fresco dining



Owner's deck aft seating



Main deck aft infinity pool



SYNTHESIS

Aerial view of aft decks



Stern view



Port side view



Aerial view



SYNTHESIS

Aerial view at dusk



OVERVIEW.

SYNTHESIS is an Amels 242 Limited Edition yacht delivered in 2021, the fifth yacht of this highly sought-after customised series, with significant upgrades completed at Oceanco in 2023 and Amels in 2025/26, the latter including her five-year special survey and full exterior repaint.

Combining award-winning Winch Design interiors with Tim Heywood exteriors, the impressive 1,790GT offers exceptional volume for her length, creating a sense of space that sets her apart in the 70m market.

Departing from the traditional yacht layout, dining and entertaining spaces are arranged across several decks rather than centred around a single formal room, giving SYNTHESIS a relaxed, residential feel on board.

Complementing this layout, Winch Design's interiors incorporate rare materials – from satin ivory oak flooring to honed botticino fioriti stone in the bathrooms – alongside carefully considered lighting, creating a refined yet welcoming atmosphere. Large windows flood the guest areas with natural light, enhancing the connection to the sea.

This design approach earned SYNTHESIS the award for Best Interior Design, Motor Yachts 500GT and Above at the 2022 BOAT Design & Innovation Awards.

The sun deck is an inviting space for open-air relaxation, with a forward jacuzzi framed by sunpads and informal seating. Just below, the bridge deck aft helipad transforms into a versatile space for entertainment, ideal as an outdoor cinema or private terrace with sofas and a bar.

For al fresco dining, the owner's deck provides a more formal setting, while the main deck features a large aft infinity pool surrounded by generous lounging areas, with a seamless connection to the main lounge, bar and TV space indoors.

SYNTHESIS accommodates up to 14 guests across six beautifully appointed cabins, including two forward main deck VIP suites and two doubles (one with a pullman and one convertible into a twin) and one twin cabin that can also convert into a double, complete with a pullman berth.

A dedicated owner's deck features a forward-facing master cabin with panoramic full-height windows, opening onto a private foredeck with a jacuzzi and sunbathing areas. Also on this deck are a private office and lounge.

The lower deck amidships is dedicated to wellness, with a spa featuring a pool, sauna, hammam, massage room and juice bar, plus direct access to the sea via a fold-out balcony.

SYNTHESIS offers proven performance with a 16.5-knot top speed, 5,000nm range and two sets of zero-speed stabilisers for enhanced comfort underway and at anchor. Well-equipped throughout and with spacious garages containing an outstanding selection of toys and tenders, including multiple WaveRunners, SeaBobs, eFoils and a range of inflatables, along with an 8.8m Pascoe SY9 Beachlander and a 9.1m Yachtwerft Meyer limousine tender. SYNTHESIS is a true turnkey option, presenting in immaculate condition for a new Owner.

Key features

Fifth hull in the Amels 242 limited edition series

Full private owner's deck with master suite, private foredeck, jacuzzi, office and lounge

Accommodation for up to 14 guests in 6 cabins (2 pullman berths)

Main deck aft infinity pool

Lower deck wellness area with spa plunge pool, sauna, hammam and massage room

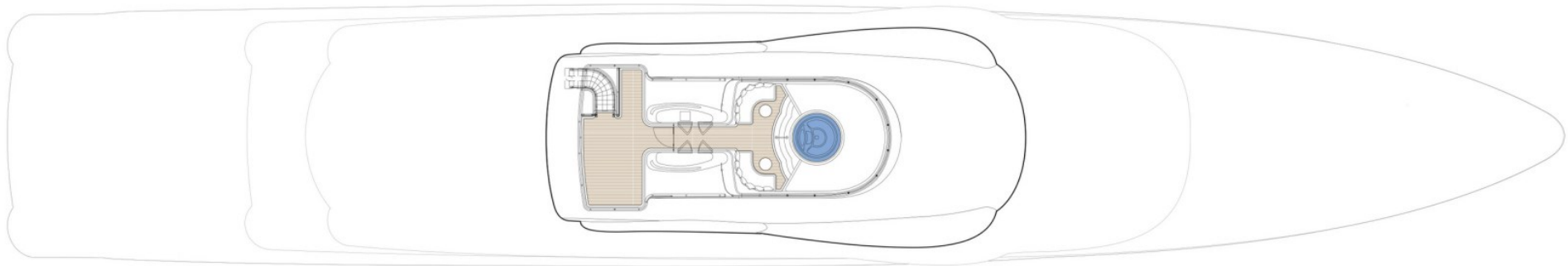
Bridge deck helipad

Five-year special survey completed, including full exterior repaint

Spacious tender garage

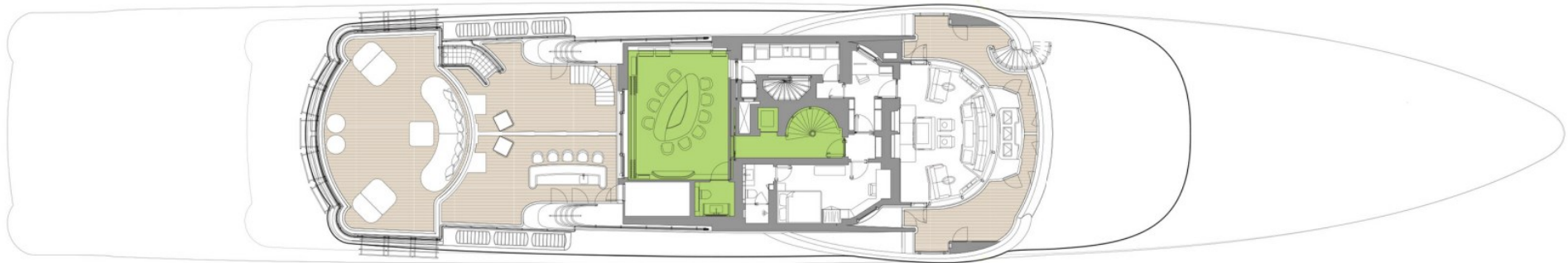
Glass elevator serving guest decks

SUN DECK



- GUEST AREAS
- MASTER SUITE
- GUEST CABINS
- MASTER SUITE OFFICE
- MASSAGE SUITE
- BEAUTY SALON
- SPA
- HAMMAM
- SAUNA
- JACUZZI
- POOL

BRIDGE DECK



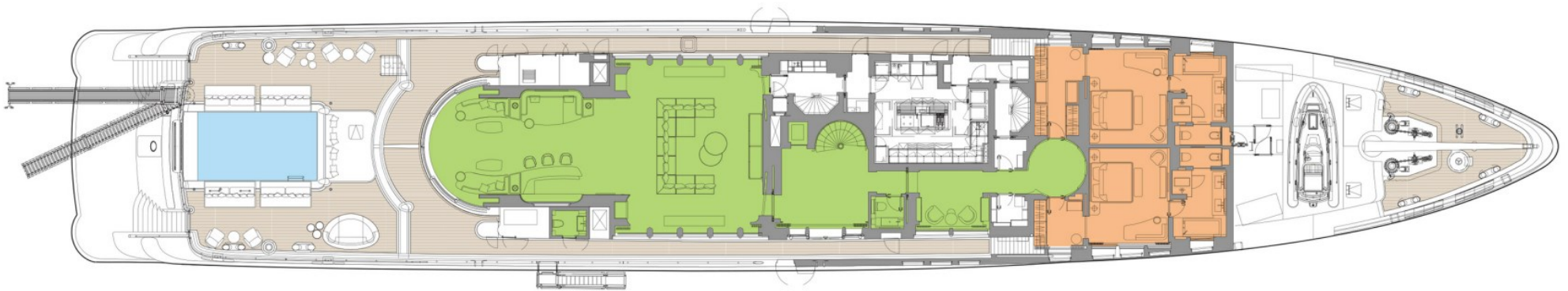
■ GUEST AREAS ■ MASTER SUITE ■ GUEST CABINS ■ MASTER SUITE OFFICE ■ MASSAGE SUITE ■ BEAUTY SALON ■ SPA ■ HAMMAM ■ SAUNA ■ JACUZZI ■ POOL

OWNER'S DECK



■ GUEST AREAS ■ MASTER SUITE ■ GUEST CABINS ■ MASTER SUITE OFFICE ■ MASSAGE SUITE ■ BEAUTY SALON ■ SPA ■ HAMMAM ■ SAUNA ■ JACUZZI ■ POOL

MAIN DECK



■ GUEST AREAS ■ MASTER SUITE ■ GUEST CABINS ■ MASTER SUITE OFFICE ■ MASSAGE SUITE ■ BEAUTY SALON ■ SPA ■ HAMMAM ■ SAUNA ■ JACUZZI ■ POOL

LOWER DECK



■ GUEST AREAS ■ MASTER SUITE ■ GUEST CABINS ■ MASTER SUITE OFFICE ■ MASSAGE SUITE ■ BEAUTY SALON ■ SPA ■ HAMMAM ■ SAUNA ■ JACUZZI ■ POOL

TANK DECK



BURGESS

WORLD CLASS. WORLD WIDE.

London +44 20 7766 4300	Monaco +377 97 97 81 21	New York +1 212 223 0410	Miami +1 305 672 0150	Singapore +65 9665 8990	Beverly Hills +1 310 424 5112	Palma +34 971 495 413	Athens +30 210 967 1661
Dubai +971 4 425 5874	Phuket +66 8257 01150	Hong Kong +852 6496 2094	Tokyo +81 46 738 8612	Sydney +61 499 945 557	Mumbai +91 98211 67253	Shanghai +86 159 0162 1898	Rio de Janeiro +55 21 2553-3238
		Aspen +1 970 710 2294	Guernsey +44 1481 735360	Palm Beach +1 561 973 2768			

Advertising of these vessel(s) in printed publications, on the internet or in any other medium is not permitted without prior written permission from Burgess. All particulars are given in good faith and are believed correct but they cannot be guaranteed.

Last updated: 17 June 2026