

STELLA M



STELLA M SPÉCIFICATIONS.



Prix demandé
EUR 77 500 000



Chantier
2021, Amels, The Netherlands



Longueur
60,1m



Largeur
10,6m



Tirant d'eau
3,4m



Tonnage brut
1 015



Vitesse de croisière
13 knots



Vitesse maximale
16,5 knots



Autonomie
4 500 nm



Pavillon
Cayman Islands



Position
West Mediterranean



Classe
Lloyd's Register (LR) 100A1, SSC, Yacht Mono G6
LMC, UMS, SCM, ECO, Green Passport, IMO III



Designer extérieur
Tim Heywood



Designer d'intérieur
Reymond Langton Design



Construction
Hull - Steel, Superstructure - Aluminium, Deck -
Teak



Équipage
14



Invités
14



Cabines
6 (4 x double, 2 x double/twin, 2 x additional
berths)



Propulsion
Hybrid

[Voir le yacht sur le site](#)

[Regarder la vidéo du yacht](#)



STELLA M



Main deck lounge



Main deck lounge



BURGESS

Discover the difference.
burgessyachts.com

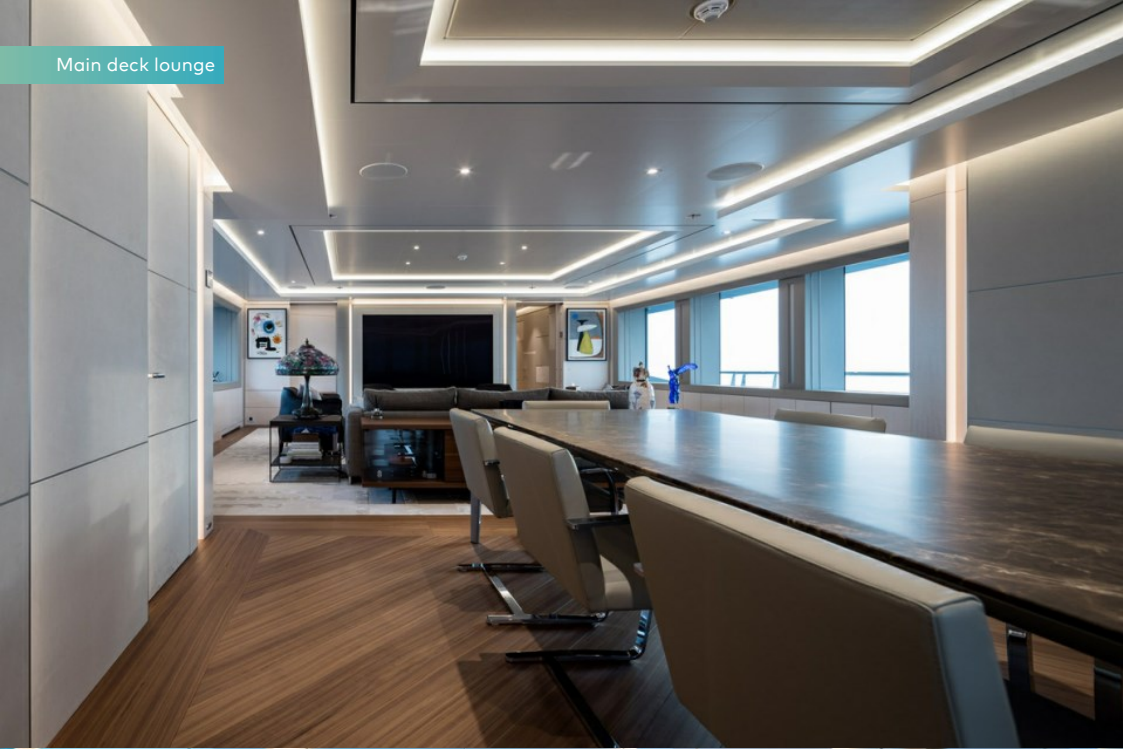


STELLA M

Main deck lounge



Main deck lounge



Owner's office



Owner's office



STELLA M

Owner's cabin



Owner's office



Owner's office



Owner's office - fold out terrace



STELLA M

Owner's en suite



Owner's en suite



Owner's dressing room



Double cabin



STELLA M

Double cabin



Double cabin



Bridge deck lounge



Bridge deck lounge



STELLA M

Bridge deck lounge



Sauna



Steam room



Gym



STELLA M

Main deck aft



Main deck fold out terrace



Bridge deck aft



Bridge deck aft



STELLA M

Sun deck fwd



Sun deck fwd jacuzzi



Sun deck aft



Beach club



STELLA M

Beach club



BURGESS

Discover the difference.
burgessyachts.com



STELLA M

APERÇU.

The 60.1m (197.1ft) STELLA M is the first of the in-demand Amels 200 Limited Editions series, delivered in 2021. Her steel hull and aluminium superstructure were constructed to Lloyd's classification and this 1,015GT yacht features northern European pedigree with exterior design by Tim Heywood and interiors by Reymond Langton Design. She is IMO Tier III-compliant with a hybrid diesel-electric propulsion system.

An elevator serves all guest decks, from lower to sun decks. Forward on the sun deck is a large jacuzzi, double sunpad and a wet bar with glass handrails to protect the view. Aft is a sun lounging space with buffet bar. Inside there is a fully equipped gym overlooking the sun lounge, a separate massage room and a dayhead.

The bridge deck aft has dining for up to 14 guests shaded by the overhang, with a BBQ for the chef's table experience, and a sun lounge with sofas aft. There is sofa seating forward of the bridge and access to the foredeck where her 8.8m (28.9ft) Pascoe tender and toys are stowed on passage, launched by a deck crane. The sky lounge features sofa seating and armchairs around a coffee table, there is a large TV on the forward bulkhead and a dayhead off the lobby.

The main deck aft has U-shaped sofa seating aft, a large versatile space for entertainment or exercise and steps either side leading down to the beach club and swim platform with hydraulic bathing steps. The beach club has a sit-up wet bar, sauna, steam shower, changing room and dayhead.

She welcomes up to 14 guests in six suites. The owner's suite is forward on the main deck and features an oversized double berth to port and TV lounge to starboard complete with a large folding balcony. Forward there is an owner's dressing room and an en suite with shower room and bath, while aft there is an owner's office. There is a VIP suite on the bridge deck and on the lower deck there are two double cabins and two convertible cabins, each with an additional berth. STELLA M also has accommodation for up to 14 crew.

Twin 1,851hp MTU diesel engines combine with two Scania diesel generators to give her a top speed of 15 knots, a cruising speed of 13.5 knots and a transatlantic range of 4,500nm. Zero speed stabilisers ensure comfort on arrival and engine hours are low after just a single season of private use.

Principales caractéristiques

Northern-European pedigree yacht from the Amels 200 Limited Editions range

Delivered in 2021, with only single season private use

Elegant exterior design by Tim Heywood

Light modern interiors by Reymond Langton Design

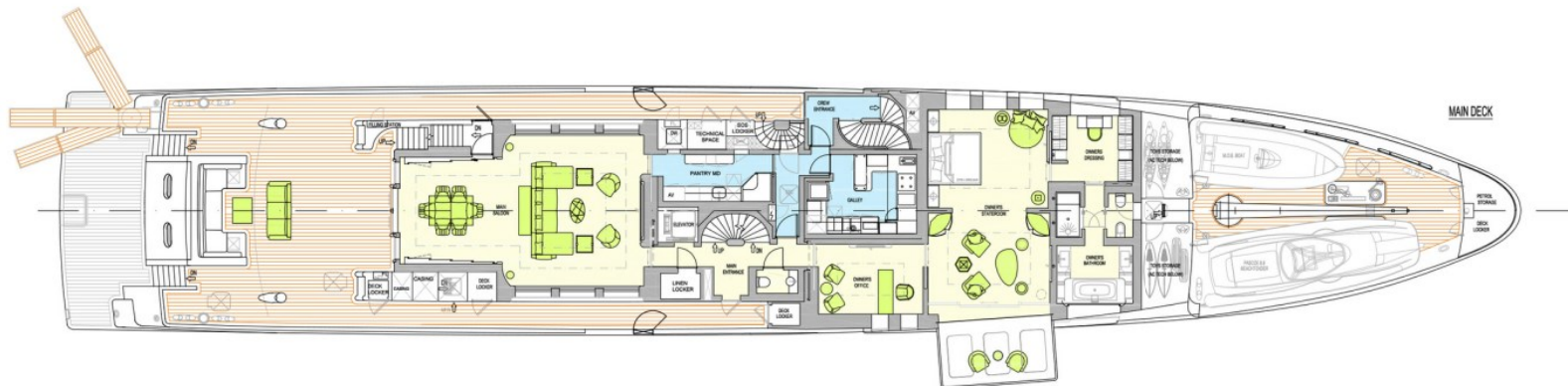
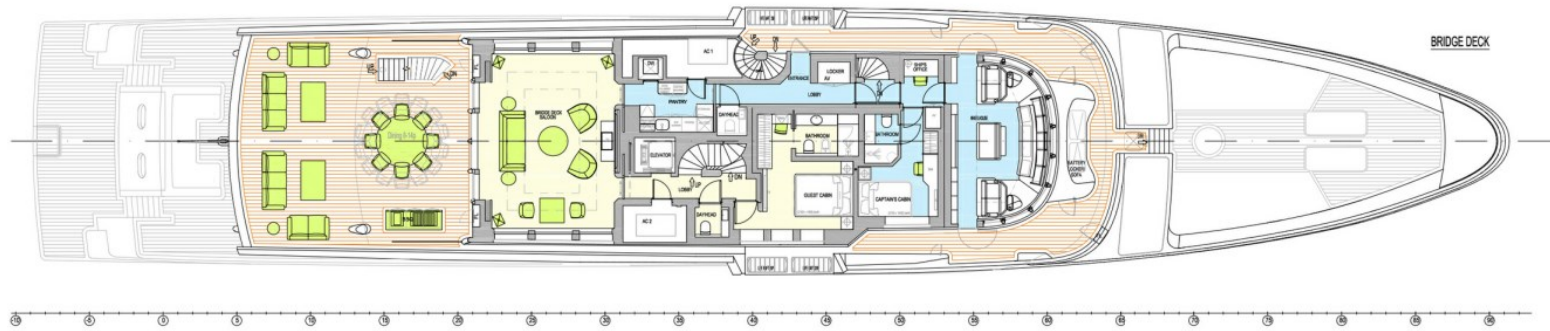
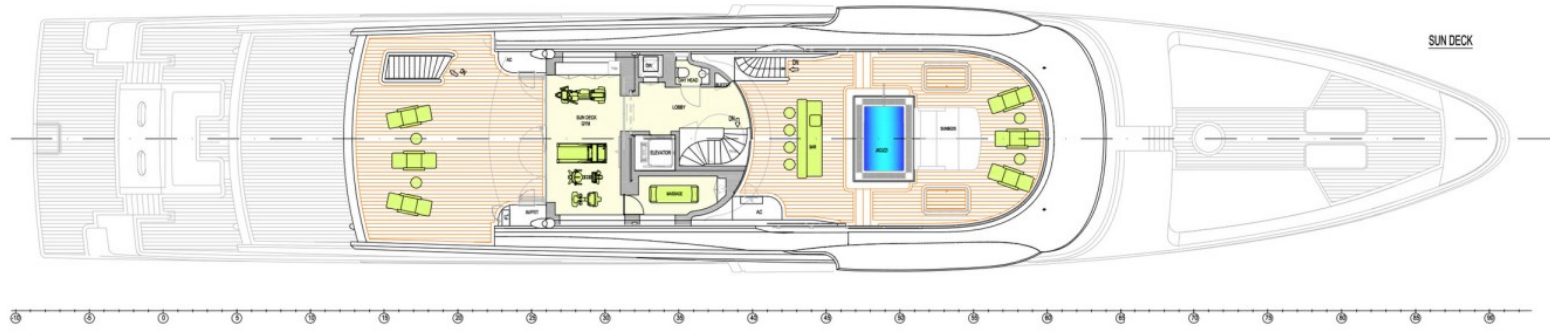
Accommodation for 12 guests in six cabins

Hybrid diesel electric engines

Elevator servicing all decks including sun deck

STELLA M

Sun Deck / Bridge Deck / Main Deck



STELLA M

Lower Deck / Tank Deck



BURGESS

WORLD CLASS.
WORLD WIDE.

| | | | | | | | |
|------------------|------------------|-----------------|-----------------|-----------------|-----------------|----------------------|------------------|
| London | Monaco | New York | Miami | Singapore | Beverly Hills | Palma | Athens |
| +44 20 7766 4300 | +377 97 97 81 21 | +1 212 223 0410 | +1 305 672 0150 | +65 9665 8990 | +1 310 424 5112 | +34 971 495 413 | +30 210 967 1661 |
| Dubai | Phuket | Hong Kong | Tokyo | Sydney | Mumbai | Shanghai | |
| +971 4 425 5874 | +66 7623 9739 | +852 6496 2094 | +81 46 738 8612 | +61 499 945 557 | +91 98211 67253 | +86 187 0898 6800 | |

La publicité de ce(s) navire(s) dans des publications imprimées, sur Internet ou sur tout autre support n'est pas autorisée sans l'autorisation écrite préalable de Burgess.
Toutes les informations sont données de bonne foi et sont considérées comme exactes, mais elles ne peuvent être garanties.

Dernière mise à jour : 18 avril 2024