

STARLUST



STARLUST

OVERVIEW.

STARLUST is a truly modern motor yacht, her contemporary and spacious interior and plentiful deck spaces were created for the ultimate in family entertainment.

The impressive main lounge is a popular hang out area, with plenty of space for relaxing, separated by a large TV screen from a spacious dining area for formal dinners. Designed to bring the outside inside, large glass doors lead on to the main deck aft, where guests can enjoy shaded al fresco dining on a large circular table which can comfortably welcome up to 12 guests. Enjoy a leisurely breakfast here before heading up to the sun deck where the jacuzzi is flanked on either side by sun pads and a sit up bar.

Enjoy a massage or beauty treatment in the dedicated spa on the lower deck, which features a relaxation area, massage room and steam room. More active guests may prefer to work out in the shaded beach club gym with its fresh air and water level view, before leaping directly into the water for a refreshing dip. Alternatively, the beach club is also the perfect launching pad for the extensive selection of action-packed watertoys.

The upper deck is dedicated to the owner and includes a full beam master suite leading onto a private terrace aft. A separate office and dressing room, lounge area and library with a sheltered seating area forward, provide a welcome retreat while on board. Invite guests to enjoy sundowners on the aft area while the talented chef prepares an exquisite dinner to be enjoyed either al fresco on the main deck aft or in the formal dining area. Wherever you choose to eat, drink and relax, rest assured that you will always be comfortable in STARLUST's exclusive and luxurious surroundings.

Key features

Private Owner's deck

Full beam VIP cabin

Jacuzzi on the sun deck

Beach club at sea level with a fully equipped gym

Spa facilities: massage room & hammam

9m Compass limo tender & 7.5m Compass open tender

Zero speed stabilisers to reduce any rolling motion while at anchor

STARLUST

Main deck aft seating and dining area



Main deck aft dining area



Main deck lounge



Main deck lounge



STARLUST

Main deck dining area



Main deck VIP cabin



Main deck VIP cabin en suite



Main deck double cabin



STARLUST

Main deck double cabin



Main deck double cabin



Main deck twin cabin



Main deck cabin shower room en suite



STARLUST

Main deck cabin shower room en suite



Hallway



Owner's deck library and entertainment room



Owner's deck private office



STARLUST

Owner's deck master cabin



Owner's deck master cabin



Owner's deck master bathroom en suite



Owner's deck aft with lounging area



STARLUST

Owner's deck aft with lounging area



Sun deck aft bar and jacuzzi



Lower deck gym



Lower deck spa



STARLUST

Beach club



At anchor



Underway



STARLUST



BURGESS

Discover the difference.
burgessyachts.com



STARLUST

SPECIFICATION.



Length
68.2m (223.7ft)



Built
2020, Abeking & Rasmussen, Germany



Interior designer
Focus Yacht Design



Beam
11.6m (38ft)



Draft
3.5m (11.5ft)



Gross tonnage
1,541



Cruising speed
12 knots



Maximum speed
16 knots



Fuel consumption at cruising speed
550 litres per hour



Engines
2 x 2,000hp MTU



Guests
12



No. of guest cabins
6 (5 x double, 1 x twin)



Crew
17

Note

Registered under the Yacht Engaged in Trade scheme (YET). All Mediterranean charters must start in either the South of France, Monaco or Corsica. For all charters, the principal charterer must be a non-EU resident.

[View yacht on website](#)

[Watch yacht video](#)



Tenders & toys



1 x Limousine tender



1 x Tender



1 x Deck jacuzzi



Trampoline



RYA training centre for jetskis & waverunners



2 x Waverunners



2 x SeaBobs



2 x eFoils



2 x Kayaks



2 x Stand up paddleboards



Wakeboard



Kneeboard



Waterskis



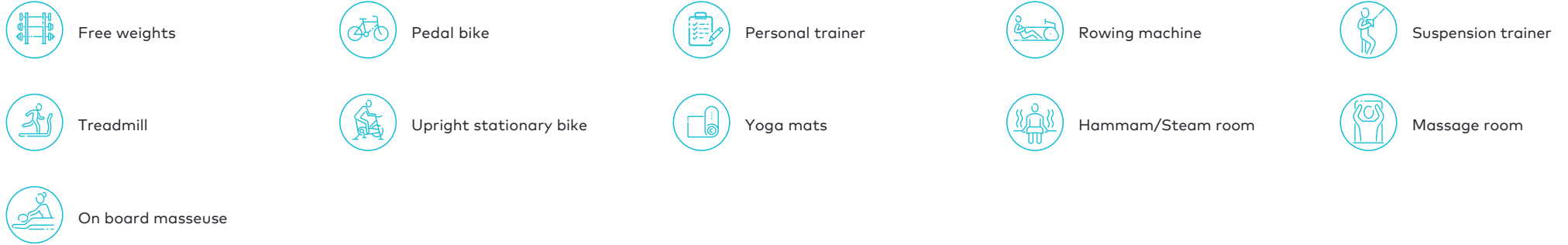
Inflatable toys



Scuba diving equipment

9m Compass limousine tender with 2 x 250hp Yamaha engines, 7.5m Compass open tender with a 250hp Yamaha engine, 5.5m Pascoe Solas rescue tender with 220hp Volvo Jet engine, 2 x Seadoo GTX LTD 300 personal watercraft, 2020 model, Seabob F5, Seabob F5S, 2 x Lift eFoil 4'9" Sport, 2 x Premium Goosehill Stand-Up Paddle Boards, 2 x Kayak (2 pax), Aquaglide Rebound Trampoline, Jobe Mode Slalom skis, Alegre Combo skis, Prolix Wakeboard, Jinx Junior Wakeboard, Prophecy Kneeboard, Jobe towables: Sonar (4 pax), Double Trouble (2 pax), 2 x Thunder, Parrot Trainer junior, Golf driving facility with biodegradable balls, Diving equipment, 3 x Trek Powerfly LT4G2 Electric Mountain Bike

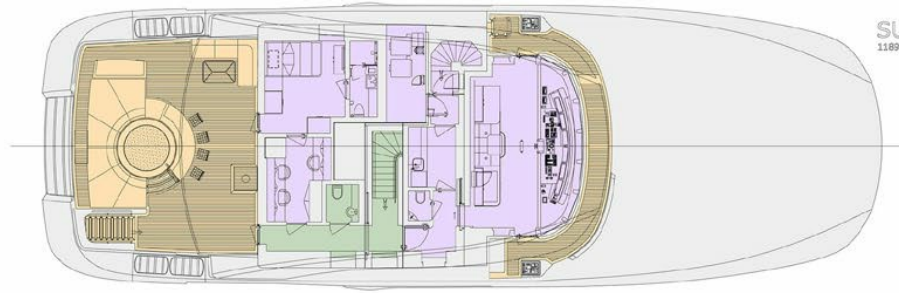
Fitness & wellness



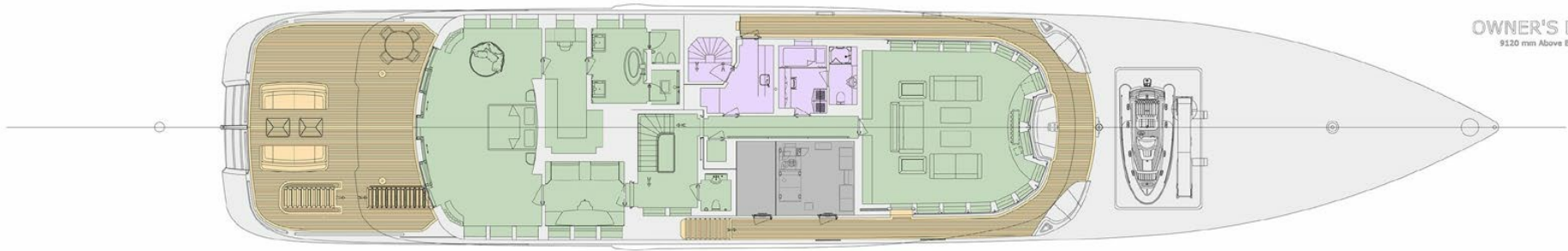
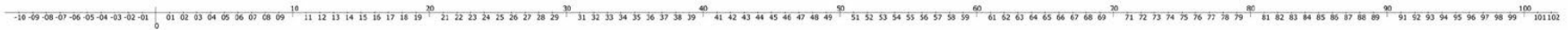
Redcord set up, Technogym Skillrow, Technogym Bike Unit, Technogym Run Unit, Nuo Flexbell 20 adjustable dumbbell set with stand, Yoga mats

Communication & entertainment

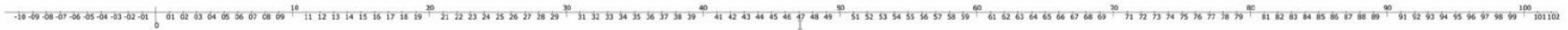
TV's in all guest cabins except Master cabin, Central entertainment system that includes Sky IT and Apple TV, Playstation 4, Kaleidoscope, Blu-ray DVD, Cinema in the library, Music: Radio, Internet radio, Airplay via Apple TV, Karaoke, satellite & cellular communications facilities, VSAT, Wi-Fi internet

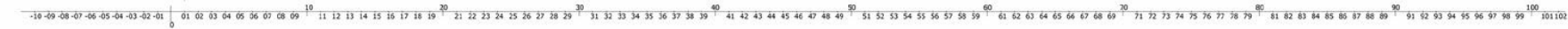
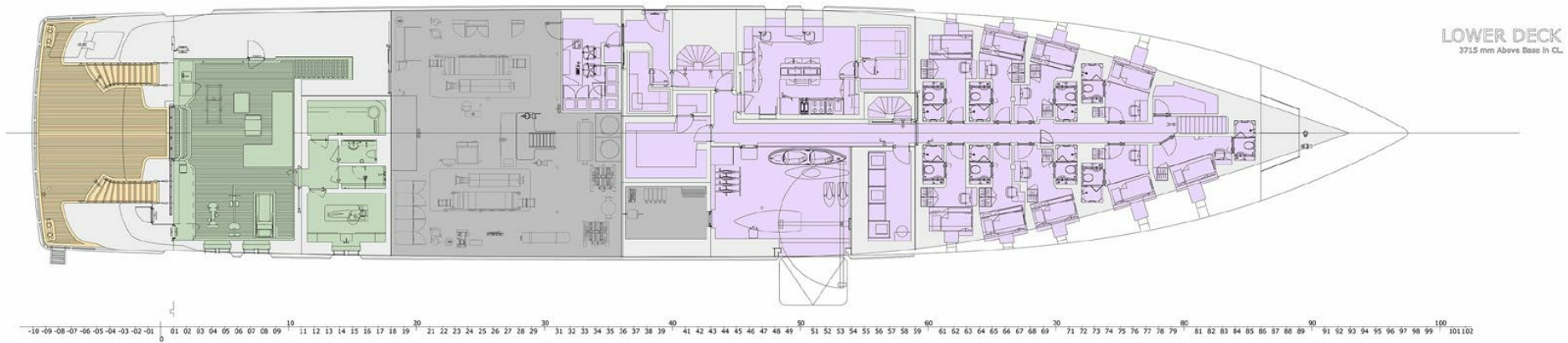
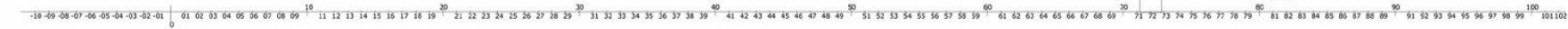


SUN DECK
11890 mm Above Base in CL.



OWNER'S DECK
9120 mm Above Base in CL.





BURGESS

WORLD CLASS. WORLD WIDE.

London +44 20 7766 4300	Monaco +377 97 97 81 21	New York +1 212 223 0410	Miami +1 305 672 0150	Singapore +65 9665 8990	Beverly Hills +1 310 424 5112	Palma +34 971 495 413	Athens +30 210 967 1661
Dubai +971 4 425 5874	Phuket +66 7623 9739	Hong Kong +852 6496 2094	Tokyo +81 46 738 8612	Sydney +61 499 945 557	Mumbai +91 98211 67253	Shanghai +86 187 0898 6800	Rio de Janeiro +55 21 2553-3238

Advertising of these vessel(s) in printed publications, on the internet or in any other medium is not permitted without prior written permission from Burgess. All particulars are given in good faith and are believed correct but they cannot be guaranteed.

Last updated: 08 May 2024