

SPIRIT



SPIRIT

APERÇU.

SPIRIT's interior is elegant and effortlessly simple, reminiscent of a relaxed, contemporary beach house. With an exceptional inventory of watertoys, a spa and inviting sun deck, she offers an abundance of family friendly amenities and space for a yacht of her length.

Begin your day with an intense workout on the sun deck under the instruction of SPIRIT's trainer, from core busting Pilates to HITT intervals on the cardio equipment. After freshening up, make your way to the main deck lounge for a well-earned breakfast.

With a garage full of fun watertoys, you will waste no time in getting out on the water. The high-speed, 12m rugged tender is great for protected, speedy trips ashore as well as providing a mobile base for diving, snorkelling and fishing expeditions. Popular options include the jetskis and SeaBobs, gear for wakesurfing, wakeboarding and waterskiing, and the towable inflatables. What you won't find on most charter yachts is SPIRIT's electric foiling surfboard and foiling catamaran, not to mention the thrilling 7m waterslide that extends from her sun deck to the water. In between stints of activity, use the main deck's casual seating area for refreshments supplied by the crew.

Lunch is served on the sun deck, freshly prepared on the Teppanyaki grill, and then it's time for some relaxation after the morning's exertions. Alongside SPIRIT's sun deck jacuzzi, there is a choice of shaded or open sun pads with service from the granite feature bar. Head indoors to the cosy sky lounge to watch a movie on the 85in TV or enjoy an afternoon of indulgence in the spa room with its hammam, premium treatments and bespoke massages.

SPIRIT's interior is exquisite, combining natural oceanic textures with neutral hues, plush fabrics and warm accents of colour. Sleeping 11 guests in five cabins, her vast master suite features an emperor bed, walk in wardrobe and study area. On the lower deck, the uniquely decorated cabins include three double cabins and one twin cabin with a pullman berth.

Cocktails and canapes are served on the upper deck aft, the comfy sofas offering great views of the setting sun and majestic anchorage, followed by an al fresco dinner at the adjacent table, which can be heated on chillier evenings. The nearby sky lounge is perfect for a nightcap to reflect on the day's activities, your spirits lifted and excited for all the possibilities tomorrow might bring.

Principales caractéristiques

Spa facilities: sauna, beauty room

Exercise equipment

12m chase boat

Dedicated watersports tender

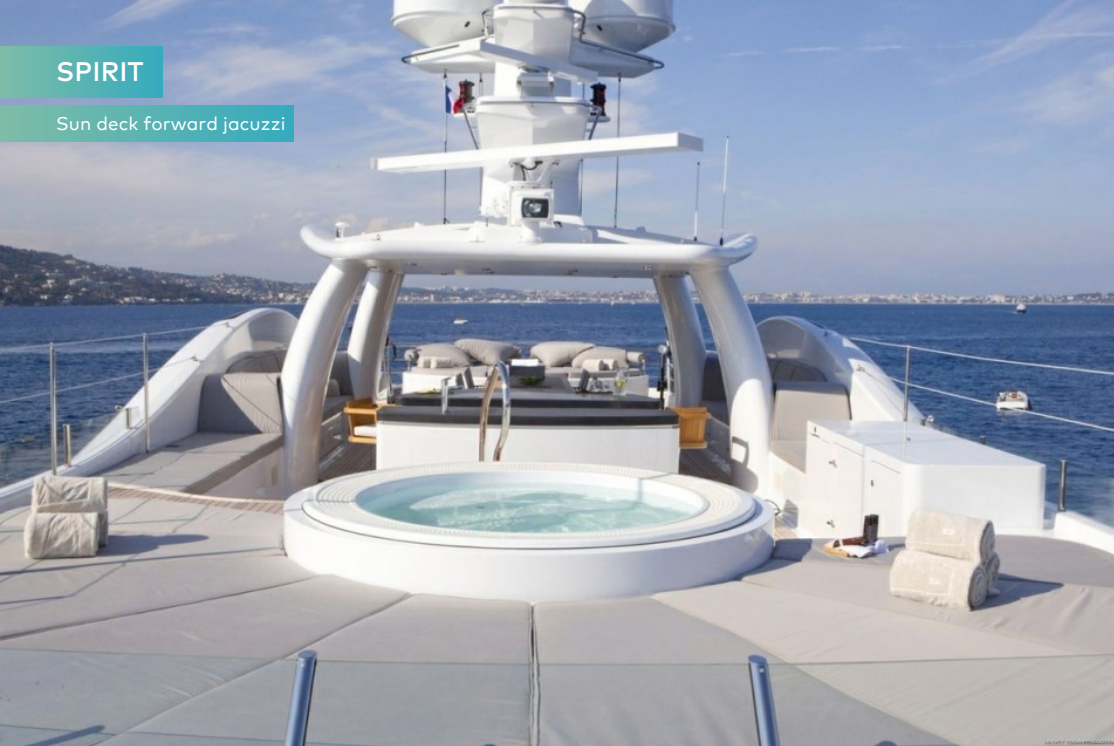
Masseuse & yoga instructor part of the crew

Jacuzzi on the sun deck

Zero speed stabilisers to reduce any rolling motion while at anchor

SPIRIT

Sun deck forward jacuzzi



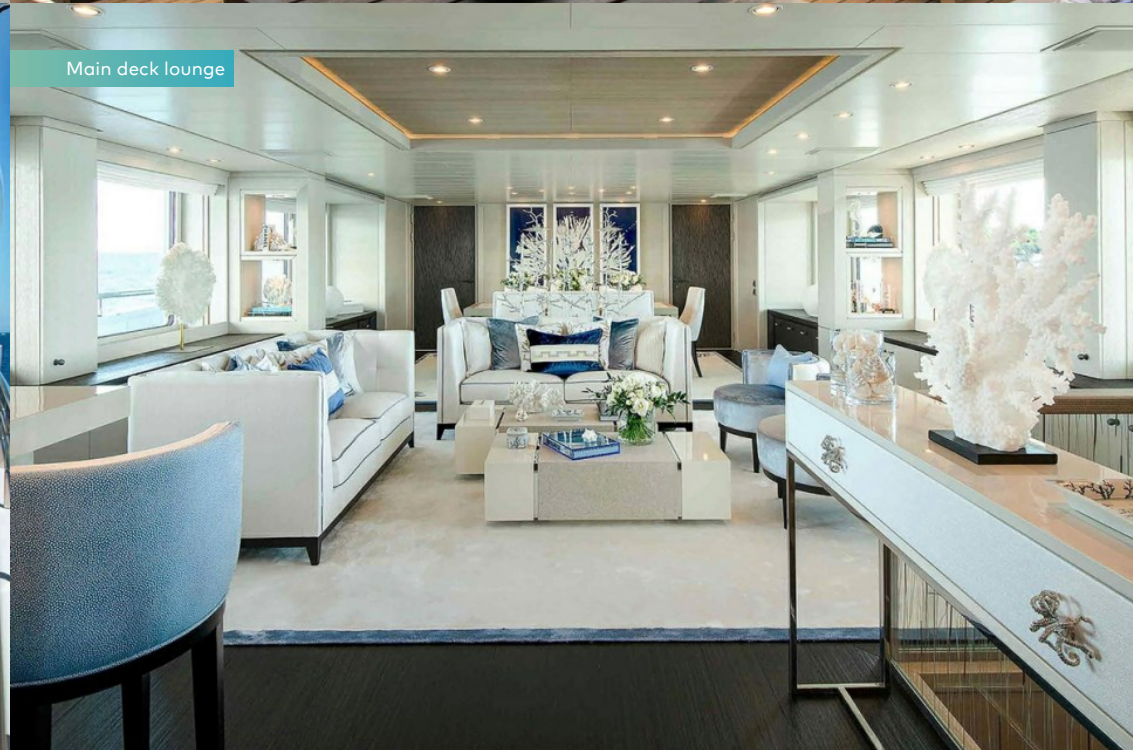
Upper deck aft seating area



Upper deck aft dining area



Main deck lounge



SPIRIT

Main deck dining area



Sky lounge bar



Sky lounge



Main deck master cabin



SPIRIT

Lower deck double cabin



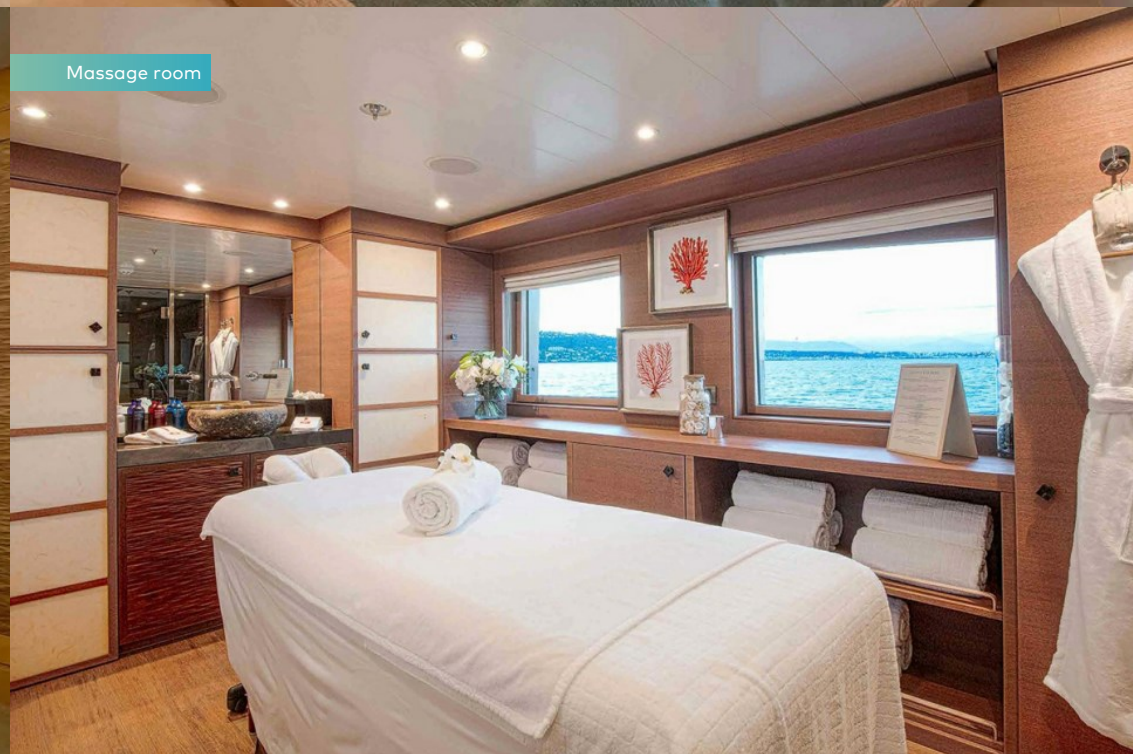
Lower deck double cabin



Lower deck twin cabin with pullman



Massage room



SPIRIT

Toys



Waverunners



Stern view



BURGESS

Discover the difference.
burgessyachts.com



SPIRIT

SPÉCIFICATIONS.



Longueur
54,3m



Chantier
2011 (refitted 2020), Amels, The Netherlands



Designer d'intérieur
Nuvolari & Lenard



Largeur
9,5m



Tirant d'eau
3,4m



Tonnage brut
656



Vitesse de croisière
13 knots



Vitesse maximale
15,5 knots



Consommation de carburant en vitesse de croisière
440 litres par heure



Moteurs
2 x 2 100hp MTU



Invités
11



Nb de cabines invités
5 (4 x double, 1 x twin, 1 x additional berths)



Équipage
13

[Voir le yacht sur le site](#)

[Regarder la vidéo du yacht](#)



Annexes & jeux nautiques



1 x Towed tender



2 x Tenders



1 x Sailing dinghy



1 x Deck jacuzzi



Waterslide



Trampoline



RYA training centre for jetskis
& waverunners



2 x Waverunners



2 x SeaBobs



1 x eFoil



4 x Kayaks



4 x Stand up paddleboards



Wakeboard



Wakesurf



Windsurfer



Waterskis



Inflatable toys



Scuba diving equipment



Fishing gear

Remise en forme & bien-être



Cross trainer



Exercise balls



Free weights



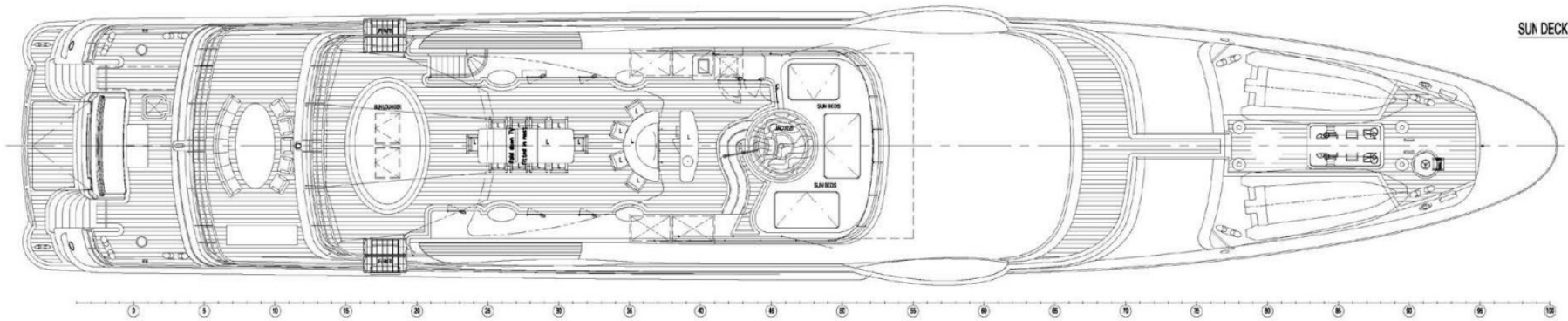
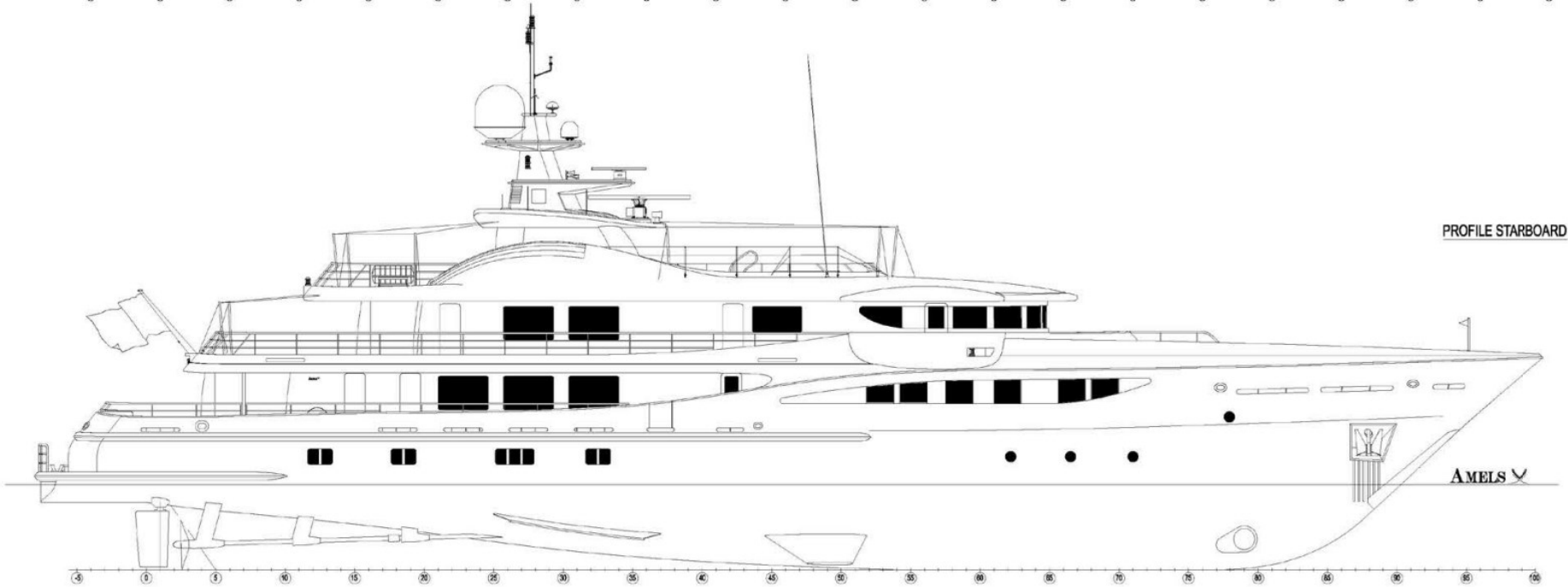
Upright stationary bike

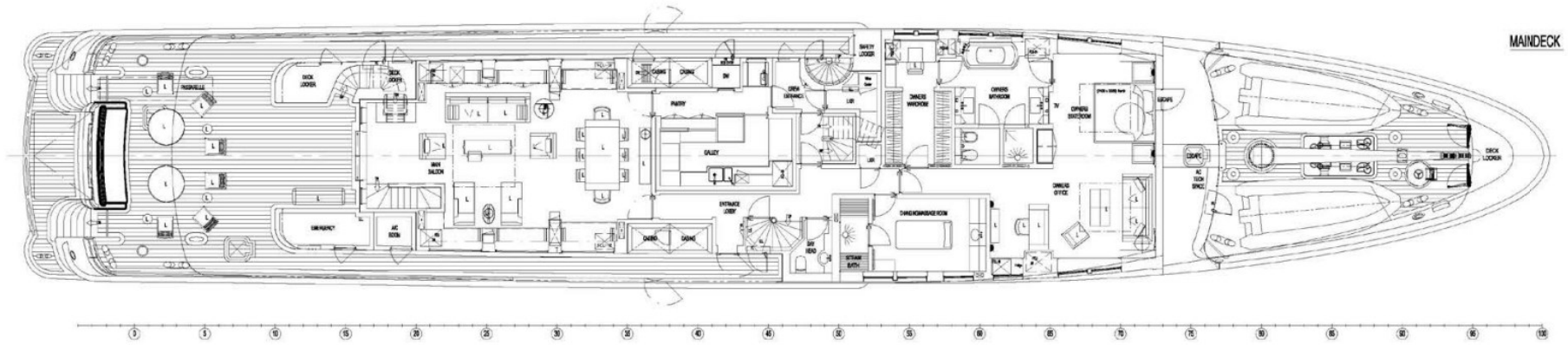
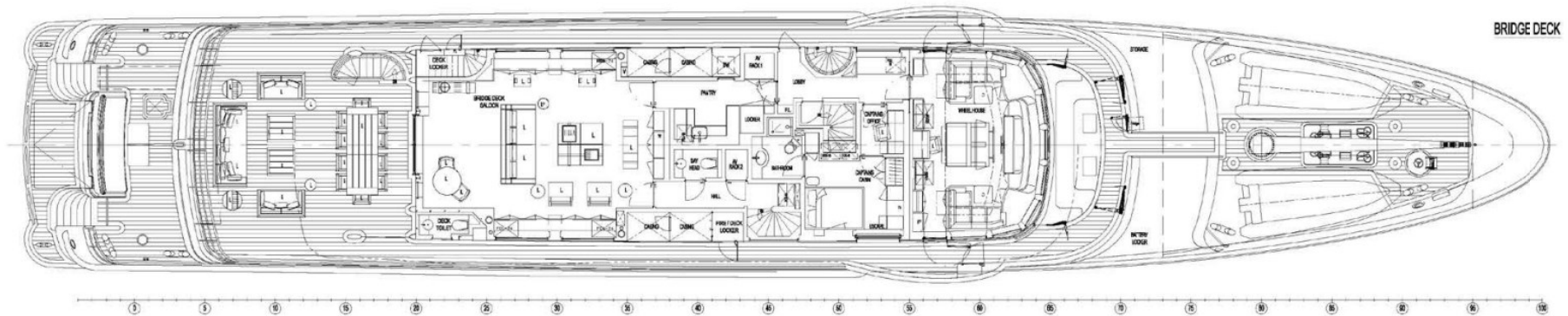


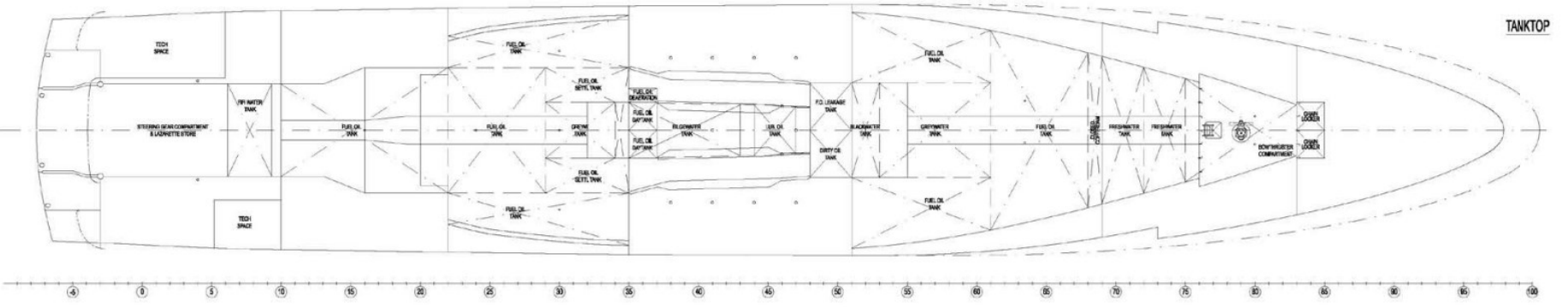
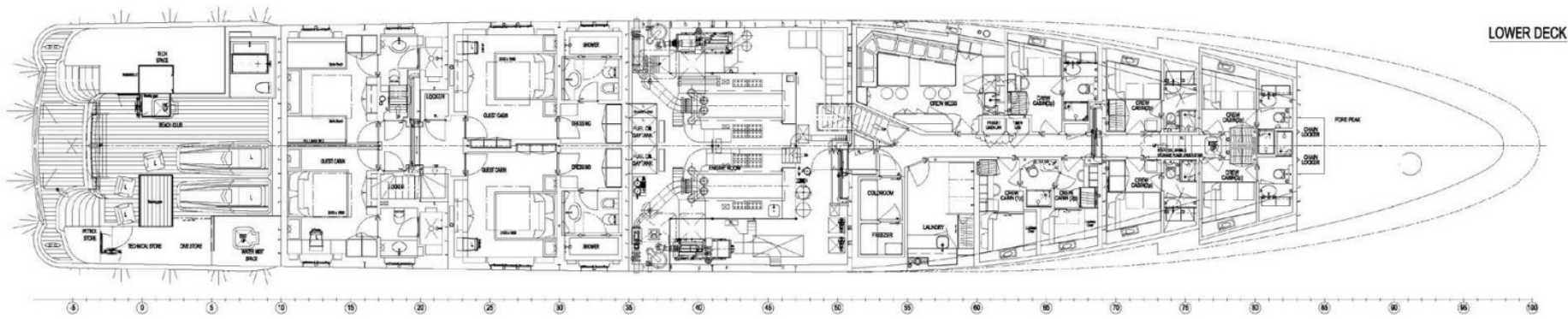
Yoga mats



On board masseuse







BURGESS

WORLD CLASS. WORLD WIDE.

London +44 20 7766 4300	Monaco +377 97 97 81 21	New York +1 212 223 0410	Miami +1 305 672 0150	Singapore +65 9665 8990	Beverly Hills +1 310 424 5112	Palma +34 971 495 413	Athens +30 210 967 1661
	Dubai +971 4 425 5874	Phuket +66 7623 9739	Hong Kong +852 6496 2094	Tokyo +81 46 738 8612	Sydney +61 499 945 557	Mumbai +91 98211 67253	

La publicité de ce(s) navire(s) dans des publications imprimées, sur Internet ou sur tout autre support n'est pas autorisée sans l'autorisation écrite préalable de Burgess.
Toutes les informations sont données de bonne foi et sont considérées comme exactes, mais elles ne peuvent être garanties.

Dernière mise à jour : 01 mars 2024