

SPICA



SPICA

OVERVIEW.

Take advantage of the innovative features found on the Ferretti 1000 for your next charter. Launched in 2023, SPICA offers you and your guests the latest design trends and the maximum space on deck and throughout her spacious interior.

SPICA's vast deck areas are a joy to behold. Her upper deck runs almost the entire length of the yacht. From the terraced foredeck area with forward-facing L-shaped dinette seating leading up to the built-in sun loungers head of the wheelhouse. High-bulwarked side decks stretch aft to the magnificent sun deck aft deck al fresco lounge area, the perfect area to enjoy drinks in the sunshine. Ahead of this is a bar and grill area opposite the al fresco dining area. There is a second al fresco dining area on the main deck, in the cockpit. The space neatly converts to a shaded al fresco lounge area when required.

Inside, SPICA is no less impressive. Her long main lounge is flanked by picture windows that give way to floor-to-ceiling windows in the stylish formal dining area. The lounge has a large L-shaped sofa and freestanding seating, making it a wonderful social space. Ahead of this is the dining area with a serving window that gives direct access to the galley.

SPICA's accommodation is both stylish and practical. There are four spacious double guest suites on the lower deck. All four suites are similar in size, and two can be converted into twin-berth suites. This provides a versatile accommodation arrangement that works perfectly for friends or family groups. The pristine master suite is forward on the main deck. The full-beam suite has picture windows, giving you a wonderful sense of place. You're also treated to a full-beam en suite bathroom and walk-in wardrobe.

The toy box on SPICA has plenty to keep your party occupied, from snorkelling to towable inflatables; there's also a SUP and kayak for exploring the coastline close by.

After a tough day on the water, there are always the delights from SPICA's chef to look forward to. Whether dining al fresco or in the formal dining area, you're assured of a meal to match the occasion, banquet or buffet; the choice is yours.

Throughout your time on board SPICA, her professional and discreet crew will be on hand to you and your guests want for nothing.

Key features

New to the charter market

Flexible cabin configurations

A crew with local expertise

Zero speed stabilisers to reduce any rolling motion while at anchor

SPICA

Cruising



Cruising



Sun deck



Sun deck



BURGESS

Discover the difference.
burgessyachts.com



SPICA

Fore deck



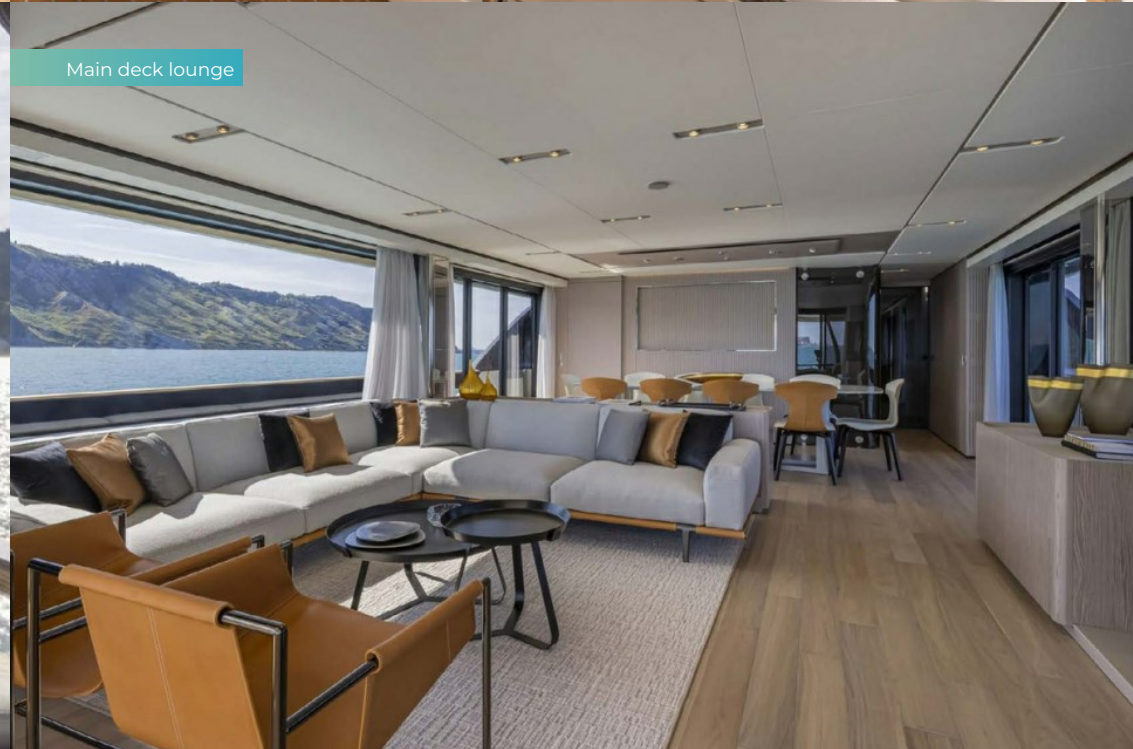
Main deck aft



Main deck aft



Main deck lounge



BURGESS

Discover the difference.
burgessyachts.com



SPICA

Main deck lounge



Main deck master cabin



Main deck master cabin



Master bathroom en suit



SPICA

Lower deck double cabin



Lower deck twin cabin



Cruising



SPICA

SPECIFICATION.



Length
30.1m (98.8ft)



Built
2023, Ferretti, Italy



Interior designer
IdeaeITALIA



Beam
6.8m (22.3ft)



Draft
2.3m (7.5ft)



Gross tonnage
170



Cruising speed
21 knots



Maximum speed
28 knots



Fuel consumption at cruising speed
800 litres per hour



Engines
2 x 2,238hp MTU



Guests
10



No. of guest cabins
5 (3 x double, 2 x double/twin)



Crew
6

Note

Fully licensed for charters in Greek waters.

[View yacht on website](#)



SPICA

TENDERS & TOYS



1 × Kayak



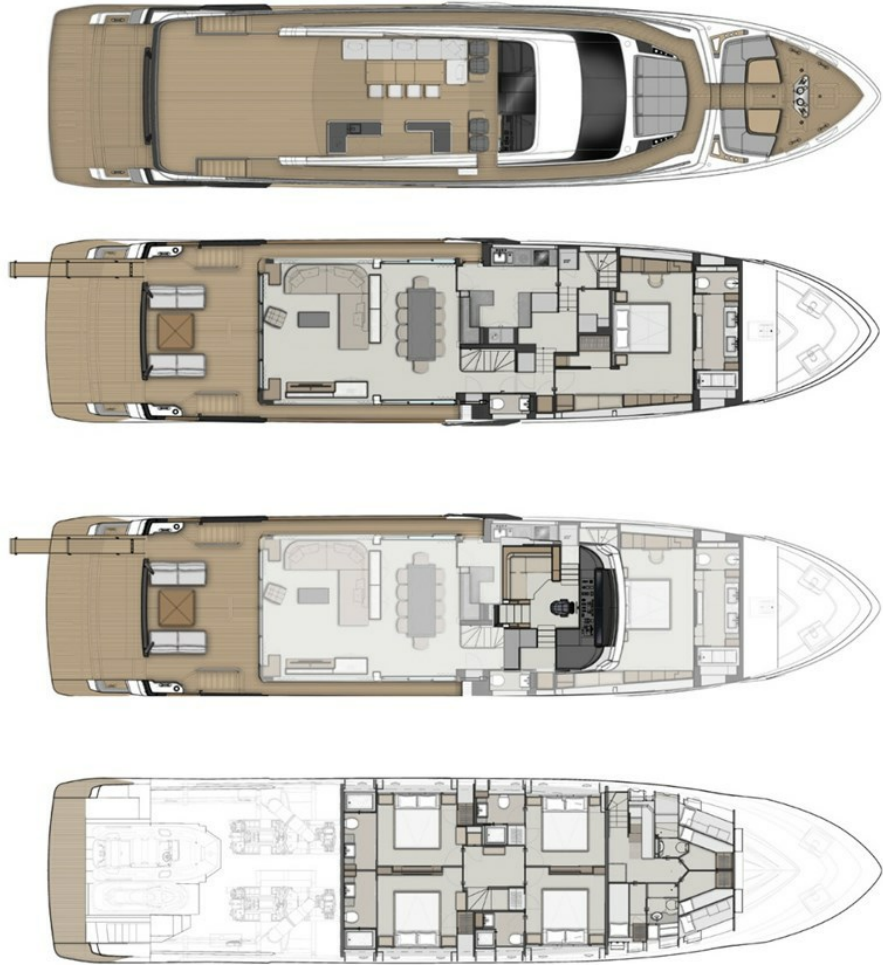
1 × Stand up paddleboard



Inflatable toys



Snorkelling gear



BURGESS

WORLD CLASS. WORLD WIDE.

London +44 20 7766 4300	Monaco +377 97 97 81 21	New York +1 212 223 0410	Miami +1 305 672 0150	Singapore +65 9665 8990	Beverly Hills +1 310 424 5112	Palma +34 971 495 413	Athens +30 210 967 1661
Dubai +971 4 425 5874	Phuket +66 7623 9739	Hong Kong +852 6496 2094	Tokyo +81 46 738 8612	Sydney +61 499 945 557	Mumbai +91 98211 67253	Shanghai +86 187 0898 6800	Rio de Janeiro +55 21 2553-3238
Aspen +1 970 710 2294							

Advertising of these vessel(s) in printed publications, on the internet or in any other medium is not permitted without prior written permission from Burgess. All particulars are given in good faith and are believed correct but they cannot be guaranteed.

Last updated: 28 February 2025