

# SLEEK 52

---



SLEEK 52

# SPECIFICATION.



Asking price  
**EUR 27,500,000**



Built  
**2028, Tureddi Yachts, Italy**



Length  
**52m (170.6ft)**



Beam  
**9.2m (30.2ft)**



Draft  
**2.5m (8.2ft)**



Gross tonnage  
**499**



Cruising speed  
**10 knots**



Maximum speed  
**15 knots**



Lying  
**Under construction**



Construction  
**Hull - Steel, Superstructure - Aluminium, Deck - Teak**



Crew  
**9**



Propulsion  
**Twin screw diesel yacht**

[View yacht on website](#)



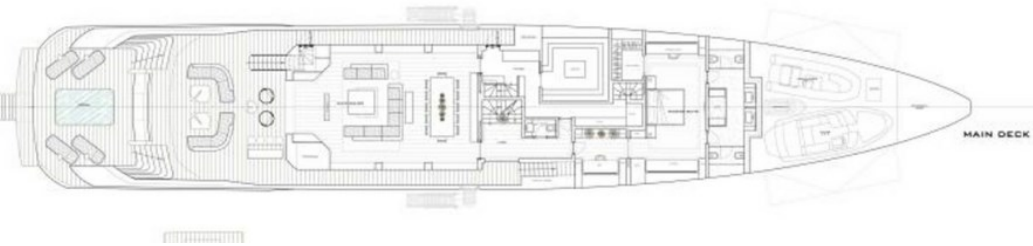
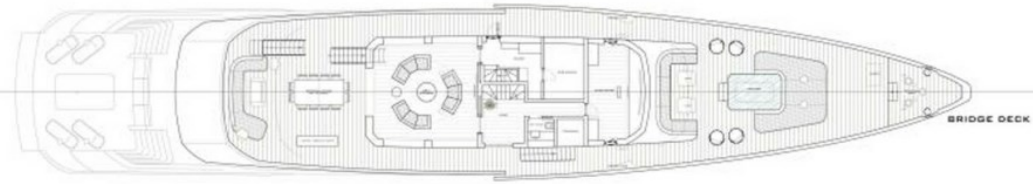
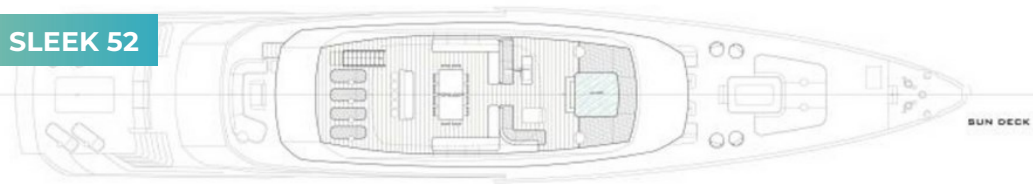
SLEEK 52



BURGESS

Discover the difference.  
[burgessyachts.com](http://burgessyachts.com)

SLEEK 52



SLEEK 52

# OVERVIEW.

**The Sleek 52 by Tureddi Yachts represents a new generation of long-range displacement motor yachts. With a length of 52 meters and a gross tonnage of 499 GT, this vessel combines contemporary exterior styling, excellent hydrodynamic efficiency, and ocean-grade engineering.**

Constructed with a steel hull and aluminium superstructure, the Sleek 52 offers superior stability, generous internal volumes, and an autonomy of 4,500 nautical miles at 10 knots, making it ideal for transoceanic passages. Designed by 3-Studio (exterior and interior), the yacht blends luxury, practicality, and high-end technology in all departments.

Built to the latest RINA Class requirements and compliant with IMO/SOLAS safety standards where applicable, the Sleek 52 ensures safe, unrestricted navigation worldwide.

## Key features

---

**Full customizable layout & specifications**

---

**Attractive price while benefiting from decades of experience of the yard**

---

**Full-beam beach club with wellness center and balconies**

---

# BURGESS

# WORLD CLASS. WORLD WIDE.

<b>London</b> +44 20 7766 4300	<b>Monaco</b> +377 97 97 81 21	<b>New York</b> +1 212 223 0410	<b>Miami</b> +1 305 672 0150	<b>Singapore</b> +65 9665 8990	<b>Beverly Hills</b> +1 310 424 5112	<b>Palma</b> +34 971 495 413	<b>Athens</b> +30 210 967 1661
<b>Dubai</b> +971 4 425 5874	<b>Phuket</b> +66 8257 01150	<b>Hong Kong</b> +852 6496 2094	<b>Tokyo</b> +81 46 738 8612	<b>Sydney</b> +61 499 945 557	<b>Mumbai</b> +91 98211 67253	<b>Shanghai</b> +86 159 0162 1898	<b>Rio de Janeiro</b> +55 21 2553-3238
		<b>Aspen</b> +1 970 710 2294	<b>Guernsey</b> +44 1481 735360	<b>Palm Beach</b> +1 561 973 2768			

Advertising of these vessel(s) in printed publications, on the internet or in any other medium is not permitted without prior written permission from Burgess. All particulars are given in good faith and are believed correct but they cannot be guaranteed.

Last updated: 30 April 2026