

# SKYLER

---





SKYLER

# SPÉCIFICATIONS.



Prix demandé  
**USD 19 985 000**



Chantier  
**2019, Benetti, Italy**



Longueur  
**42,6m**



Largeur  
**9m**



Tirant d'eau  
**2,3m**



Tonnage brut  
**445**



Vitesse de croisière  
**12 knots**



Vitesse maximale  
**15 knots**



Autonomie  
**4 000 nm**



Pavillon  
**Jamaica**



Position  
**West Mediterranean**



Classe  
**RINA**



Designer extérieur  
**Stefano Righini**



Designer d'intérieur  
**RWD**



Construction  
**Hull - Fibreglass, Superstructure - Fibreglass,  
Deck - Teak**



Équipage  
**8**



Invités  
**12**



Cabines  
**5 (3 × double, 2 × twin, 2 × additional berths)**



Moteurs  
**2 × 1 600hp Caterpillar**



Propulsion  
**Twin screw diesel yacht**

## Note

Not available for sale to US residents while in US waters.

[Voir le yacht sur le site](#)

[Regarder la vidéo du yacht](#)





## SKYLER

Main deck lounge



Main deck lounge



Main deck dining area



Main deck dining





## SKYLER

Master cabin



Master cabin fold out balcony



Master cabin fold out balcony



Master cabin en suite bathroom





## SKYLER

Double cabin



Double cabin



Twin cabin



Sky lounge





SKYLER

Sky lounge



Main deck aft



Main deck aft



Bridge deck aft



BURGESS

Discover the difference.  
burgessyachts.com





## SKYLER

Foredeck lounge area



Foredeck lounge area



Sun deck



Sun deck





## SKYLER

Sun deck bar



Aerial view



Swim platform & beach club



Swim platform



BURGESS

Discover the difference.  
[burgessyachts.com](http://burgessyachts.com)





## SKYLER

Bridge deck gym



Cruising



At anchor



At anchor



BURGESS

Discover the difference.  
[burgessyachts.com](http://burgessyachts.com)





SKYLER

Cruising



BURGESS

Discover the difference.  
[burgessyachts.com](http://burgessyachts.com)





SKYLER

# APERÇU.

SKYLER, a 42.6m (139.7ft) 2019 Benetti Crystal model, beautifully merges elements of luxury and comfort. She is sure to impress even the most meticulous of yachting enthusiasts. Her plethora of unique characteristics brings an ultra-modern aesthetic while staying true to her classic Benetti craftsmanship. Every detail on SKYLER has been given close examination; only the best materials and surfaces have been chosen. The superyacht's many windows and one-button terraces allow guests to be constantly close to the outdoors, making SKYLER an extremely versatile yacht.

The main salon of SKYLER is a work of art with large, beautiful windows allowing guests to take in the scenery even while seated on the sofas. The sliding glass door to starboard offers a seamless indoor-outdoor feel. High-end furniture and stunning artwork adorn SKYLER's interior, her dining room being no exception. The space is complemented by rich leather dining chairs and is filled with light from the surrounding windows and elegant light fixtures. Every detail in her build has been thought through, right down to the rubber padding on the wooden floors ensuring they are soft and comfortable on bare feet.

The Benetti sleeps 12 guests in five resplendent staterooms. The full-beam master suite is an oasis with panoramic windows and port and starboard one-button terraces. The silk carpet and suede furniture make nights spent onboard extra luxurious. Further accommodations include four spacious guest cabins, two kings, one French Queen with a single berth and one with two singles and a Pullman. All her staterooms are coupled with en-suite bathrooms, with Onyx and Nickel features adding subtle notes of luxury.

Powered by twin 1,600hp Caterpillar engines, SKYLER boasts a cruising speed of 12 knots and a maximum speed of 15 knots. Her 4,000nm range allows for extensive cruising while her zero speed stabilizers provides comfort at sea and at anchor.

\*Not available for sale to US residents while in US waters

## Principales caractéristiques

---

Full beam master cabin offering two unique slide-out terraces

---

Natural light flows through the oversized windows throughout

---

Serene accommodation for up to 12 guests in 5 tastefully decorated cabins

---

Fantastic sun deck & impressive outdoor deck spaces

---

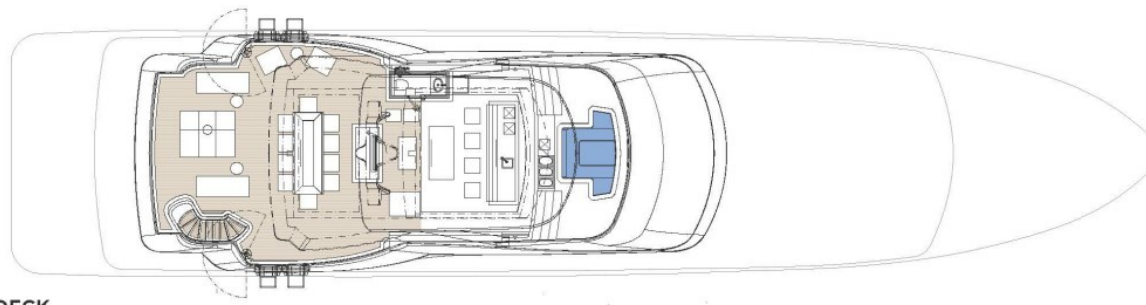
Large sky lounge and multiple deck areas

---

Dedicated air-conditioned gym

---

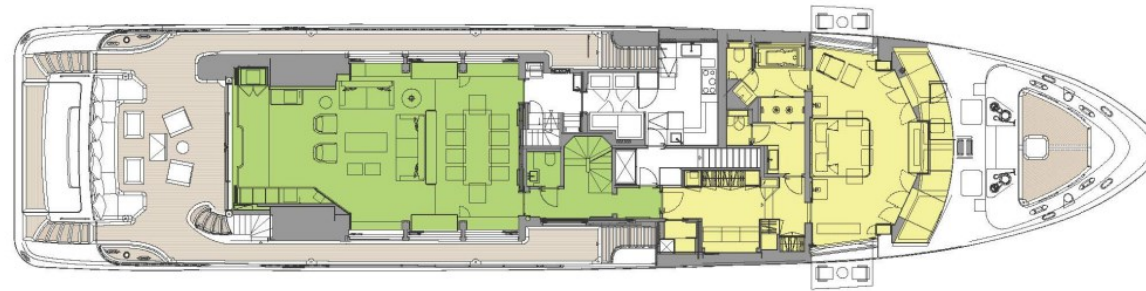




SUN DECK



UPPER DECK



MAIN DECK



LOWER DECK

■ GUEST AREAS 
 ■ MASTER SUITE 
 ■ VIP SUITE 
 ■ GUEST CABINS 
 ■ GYM 
 ■ JACUZZI



# BURGESS

# WORLD CLASS. WORLD WIDE.

London	Monaco	New York	Miami	Singapore	Beverly Hills	Palma	Athens
+44 20 7766 4300	+377 97 97 81 21	+1 212 223 0410	+1 305 672 0150	+65 9665 8990	+1 310 424 5112	+34 971 495 413	+30 210 967 1661
Dubai	Phuket	Hong Kong	Tokyo	Sydney	Mumbai	Shanghai	
+971 4 425 5874	+66 7623 9739	+852 6496 2094	+81 46 738 8612	+61 499 945 557	+91 98211 67253	+86 187 0898 6800	

La publicité de ce(s) navire(s) dans des publications imprimées, sur Internet ou sur tout autre support n'est pas autorisée sans l'autorisation écrite préalable de Burgess.  
Toutes les informations sont données de bonne foi et sont considérées comme exactes, mais elles ne peuvent être garanties.

Dernière mise à jour : 25 avril 2024