

SKYLER



SKYLER

SPECIFICATION.



Asking price
USD 19,985,000



Built
2019, Benetti, Italy



Length
42.6m (139.7ft)



Beam
9m (29.5ft)



Draft
2.3m (7.5ft)



Gross tonnage
445



Cruising speed
12 knots



Maximum speed
15 knots



Range
4,000 nm



Flag
Jamaica



Lying
West Mediterranean



Class
RINA



Exterior designer
Stefano Righini



Interior designer
RWD



Construction
Hull - Fibreglass, Superstructure - Fibreglass,
Deck - Teak



Crew
8



Guests
12



Cabins
5 (3 x double, 2 x twin, 2 x additional berths)



Engines
2 x 1,600hp Caterpillar



Propulsion
Twin screw diesel yacht

Note

Not available for sale to US residents while in US waters.

[View yacht on website](#)

[Watch yacht video](#)



SKYLER

Main deck lounge



Main deck lounge



Main deck dining area



Main deck dining



SKYLER

Master cabin



Master cabin fold out balcony



Master cabin fold out balcony



Master cabin en suite bathroom



BURGESS

Discover the difference.
burgessyachts.com



SKYLER

Double cabin



Double cabin



Twin cabin



Sky lounge



SKYLER

Sky lounge



Main deck aft



Main deck aft



Bridge deck aft



BURGESS

Discover the difference.
burgessyachts.com



SKYLER

Foredeck lounge area



Foredeck lounge area



Sun deck



Sun deck



SKYLER

Sun deck bar



Aerial view



Swim platform & beach club



Swim platform



SKYLER

Bridge deck gym



Cruising



At anchor



At anchor



SKYLER

Cruising



BURGESS

Discover the difference.
burgessyachts.com



SKYLER

OVERVIEW.

SKYLER, a 42.6m (139.7ft) 2019 Benetti Crystal model, beautifully merges elements of luxury and comfort. She is sure to impress even the most meticulous of yachting enthusiasts. Her plethora of unique characteristics brings an ultra-modern aesthetic while staying true to her classic Benetti craftsmanship. Every detail on SKYLER has been given close examination; only the best materials and surfaces have been chosen. The superyacht's many windows and one-button terraces allow guests to be constantly close to the outdoors, making SKYLER an extremely versatile yacht.

The main salon of SKYLER is a work of art with large, beautiful windows allowing guests to take in the scenery even while seated on the sofas. The sliding glass door to starboard offers a seamless indoor-outdoor feel. High-end furniture and stunning artwork adorn SKYLER's interior, her dining room being no exception. The space is complemented by rich leather dining chairs and is filled with light from the surrounding windows and elegant light fixtures. Every detail in her build has been thought through, right down to the rubber padding on the wooden floors ensuring they are soft and comfortable on bare feet.

The Benetti sleeps 12 guests in five resplendent staterooms. The full-beam master suite is an oasis with panoramic windows and port and starboard one-button terraces. The silk carpet and suede furniture make nights spent onboard extra luxurious. Further accommodations include four spacious guest cabins, two kings, one French Queen with a single berth and one with two singles and a Pullman. All her staterooms are coupled with en-suite bathrooms, with Onyx and Nickel features adding subtle notes of luxury.

Powered by twin 1,600hp Caterpillar engines, SKYLER boasts a cruising speed of 12 knots and a maximum speed of 15 knots. Her 4,000nm range allows for extensive cruising while her zero speed stabilizers provides comfort at sea and at anchor.

*Not available for sale to US residents while in US waters

Key features

Full beam master cabin offering two unique slide-out terraces

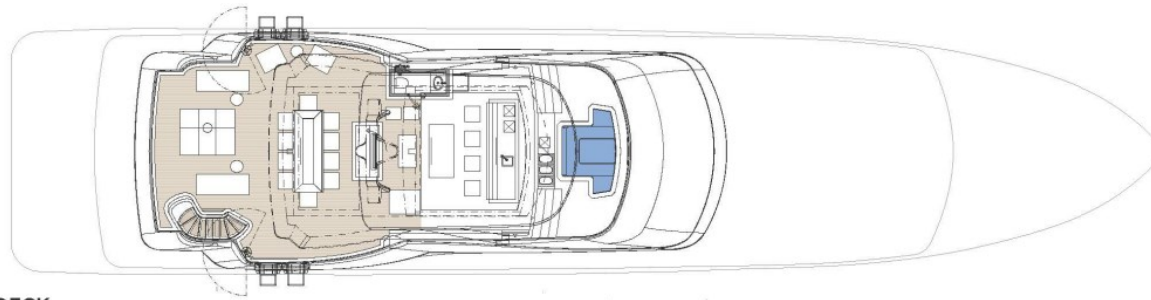
Natural light flows through the oversized windows throughout

Serene accommodation for up to 12 guests in 5 tastefully decorated cabins

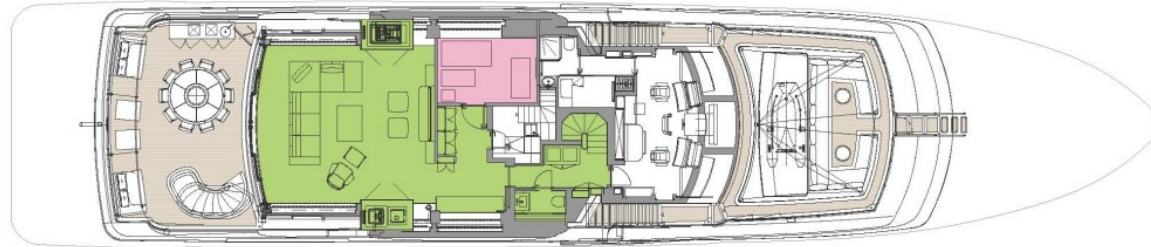
Fantastic sun deck & impressive outdoor deck spaces

Large sky lounge and multiple deck areas

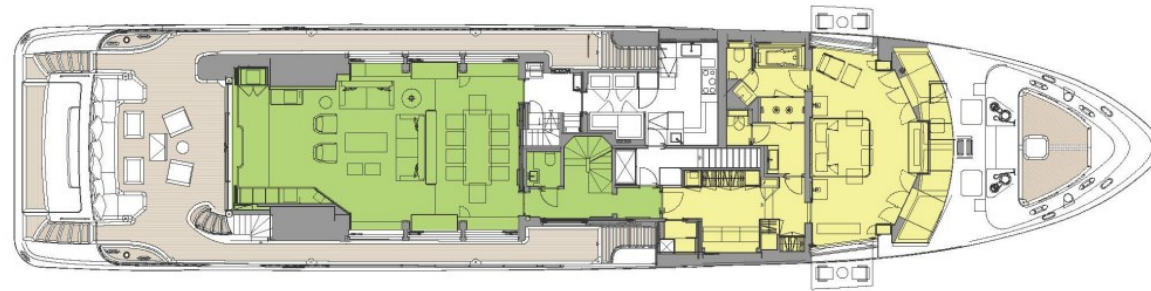
Dedicated air-conditioned gym



SUN DECK



UPPER DECK



MAIN DECK



LOWER DECK

■ GUEST AREAS ■ MASTER SUITE ■ VIP SUITE ■ GUEST CABINS ■ GYM ■ JACUZZI

BURGESS

WORLD CLASS. WORLD WIDE.

London +44 20 7766 4300	Monaco +377 97 97 81 21	New York +1 212 223 0410	Miami +1 305 672 0150	Singapore +65 9665 8990	Beverly Hills +1 310 424 5112	Palma +34 971 495 413	Athens +30 210 967 1661
Dubai +971 4 425 5874	Phuket +66 7623 9739	Hong Kong +852 6496 2094	Tokyo +81 46 738 8612	Sydney +61 499 945 557	Mumbai +91 98211 67253	Shanghai +86 187 0898 6800	Rio de Janeiro +55 21 2553-3238

Advertising of these vessel(s) in printed publications, on the internet or in any other medium is not permitted without prior written permission from Burgess. All particulars are given in good faith and are believed correct but they cannot be guaranteed.

Last updated: 15 May 2024