

SIREN



SIREN

OVERVIEW.

SIREN is 73.5m (241.2ft) of cool sophistication. Boasting acres of deck space, this superyacht is designed for outdoor living, with infinite sunbathing options, an outdoor cinema and a choice of al fresco dining areas.

Built by Nobiskrug, her cool, bright interior is devoid of clutter, creating clean lines and a calm, relaxing ambience throughout. The impressive main salon is a popular chill out area and a large, stylish space for entertaining, with a long dining table for formal dinners. Continuing the indoor/outdoor theme, a circular bar connects the salon with the aft deck which is large enough that all guests can be in the same place without feeling crowded, whether relaxing on the sofas, or the loungers on the raised circular sunbathing platform.

Head to the bridge deck's luxurious indoor movie theatre with its three double daybeds, large screen and blacked out walls for the full cinema experience. Guests love catching up on major sporting events, or watching a movie in the cinema, at any time of day. Enjoy a leisurely breakfast in the sheltered bridge deck dining area, then take a coffee and a newspaper (printed on board) to the aft seating area and make the most of the morning sun.

The sun deck is the hub of this luxury charter yacht during the day. The forward section is a sunbathing haven with a refreshing jacuzzi, and sun pads at every angle. On the shaded aft deck, take a morning yoga class or an early evening massage then, when it gets dark, kick back on the sofas as the area is transformed into an atmospheric outdoor cinema.

SIREN's accommodation is fresh and tranquil, with six cabins for 12 guests. The master suite is airy and spacious with full length windows, an office and a fold-down balcony. Extensive storage space is provided in the walk-in wardrobe, which leads into large his and hers bathrooms with Lalique fittings. A fold-down double bed can be assembled in the office area and sectioned off to create additional family accommodation.

Four en suite cabins are located on the lower deck, including a VIP with a sofa area and desk, two double cabins and a twin. A further double cabin is positioned on the bridge deck, with an elevator connecting all three interior levels.

Work out in the cool, shaded beach club gym with its fresh air and water level view. Then cool off in the sea-pool, leap off the swim platform or ask the crew to launch the extensive selection of action-packed watertoys.

Key features

Fold-out balcony in the master suite

A dedicated indoor cinema room, plus an outdoor cinema on the sun deck

Beach club/gym

On board masseuse, Pilates instructor, hair stylist and make-up artist

Elevator from lower deck to bridge deck

Capacity to download and print daily newspapers on board

Zero speed stabilisers to reduce any rolling motion while at anchor

SIREN

Main deck aft



Main deck bar



Main deck lounge



Main deck dining room



SIREN

Master suite



Master suite office



Master suite office with additional fold-down bed



Master bathroom (hers)



SIREN

Master shower room (his)



Master suite private balcony



Double cabin



VIP cabin



SIREN

Double cabin



Double/twin cabin



Twin/double cabin



Bridge deck cabin



SIREN

Details



Guest cabin shower room



Elevator



Sky lounge



BURGESS

Discover the difference.
burgessyachts.com



SIREN

Bridge deck cinema



Bridge deck dining



Sun deck



Sun deck crow's nest



SIREN

Sun deck outdoor cinema



Gym/beach club



Spa treatments room



Watersports



SIREN

Aquapark



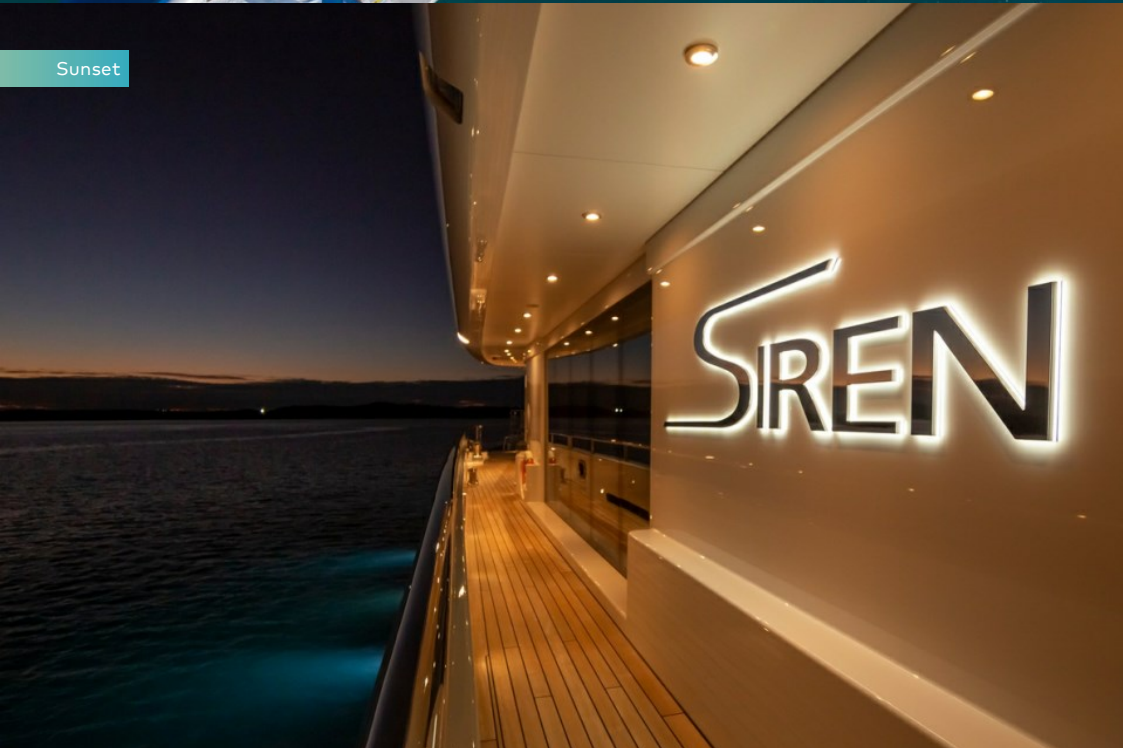
Watersports



Watersports



Sunset



BURGESS

Discover the difference.
burgessyachts.com



SIREN

Tender & toys



Bird's eye view



At anchor



BURGESS

Discover the difference.
burgessyachts.com



SIREN

SPECIFICATION.



Length
73.5m (241.2ft)



Built
2008 (refitted 2013), Nobiskrug, Germany



Interior designer
Newcruise



Beam
12.6m (41.3ft)



Draft
3.6m (11.8ft)



Gross tonnage
1,585



Cruising speed
14.5 knots



Maximum speed
17.1 knots



Fuel consumption at cruising speed
450 litres per hour



Engines
2 x 2,360hp MTU



Guests
12



No. of guest cabins
6 (5 x double, 1 x double/twin, 2 x additional berths)



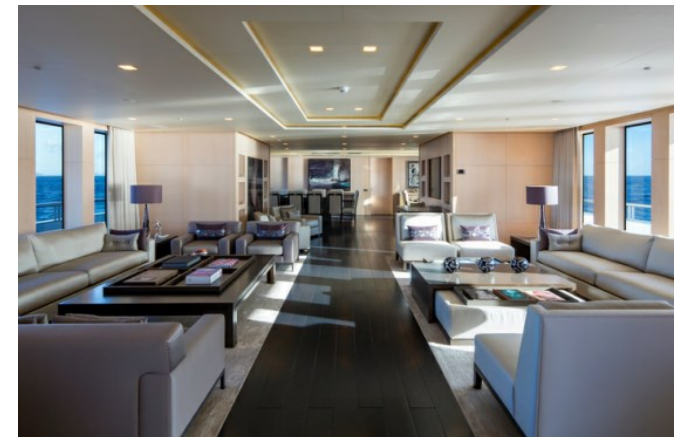
Crew
18

Note

Not available for charter to US residents while in US waters.

[View yacht on website](#)

[Watch yacht video](#)



EQUIPMENT.

Tenders & toys



2 x Tenders



1 x Deck jacuzzi



Pool



Waterslide



Anti-jellyfish pool



Climbing wall



Trampoline



Aquapark



RYA training centre for jetskis & waverunners



2 x Waverunners



2 x SeaBobs



1 x Flyboard



2 x eFoils



3 x Kayaks



5 x Stand up paddleboards



Pedal board



Wakeboard



Windsurfer



Waterskis



Inflatable tows



Scuba diving equipment



Snorkelling gear

10m Royal jet drive tender with 2 x 260hp engines, 7.6m Ribeye Beachlander tender with 225hp outboard engine, 2 x Yamaha VX180 Cruiser HO waverunners, 2 x F5S Seabobs, Zapata Flyboard, 2 x Fliteboard eFoils, rigid kayak (1 man), 2 x Zray kayaks (2 man), 2 x Hobie stand up pedal boards, 3 x stand up paddle boards, 2 x Zray stand up paddle board/windsurfers, wakeboards, waterskis & tows, Jungle Joe climbing frame with slide, 4.2m trampoline, 3m inflatable climbing wall, 4m x 4m Aquaglide ocean pool (anti jelly fish), snorkeling gear, fishing gear, Scuba diving equipment (rendezvous diving only), approved RYA training centre for personal watercraft

Fitness & wellness



Balance trainer



Exercise balls



Free weights



Personal trainer



Pilates reformer



Rowing machine



Suspension trainer



Treadmill



Upright stationary bike



Yoga instructor



Yoga mats



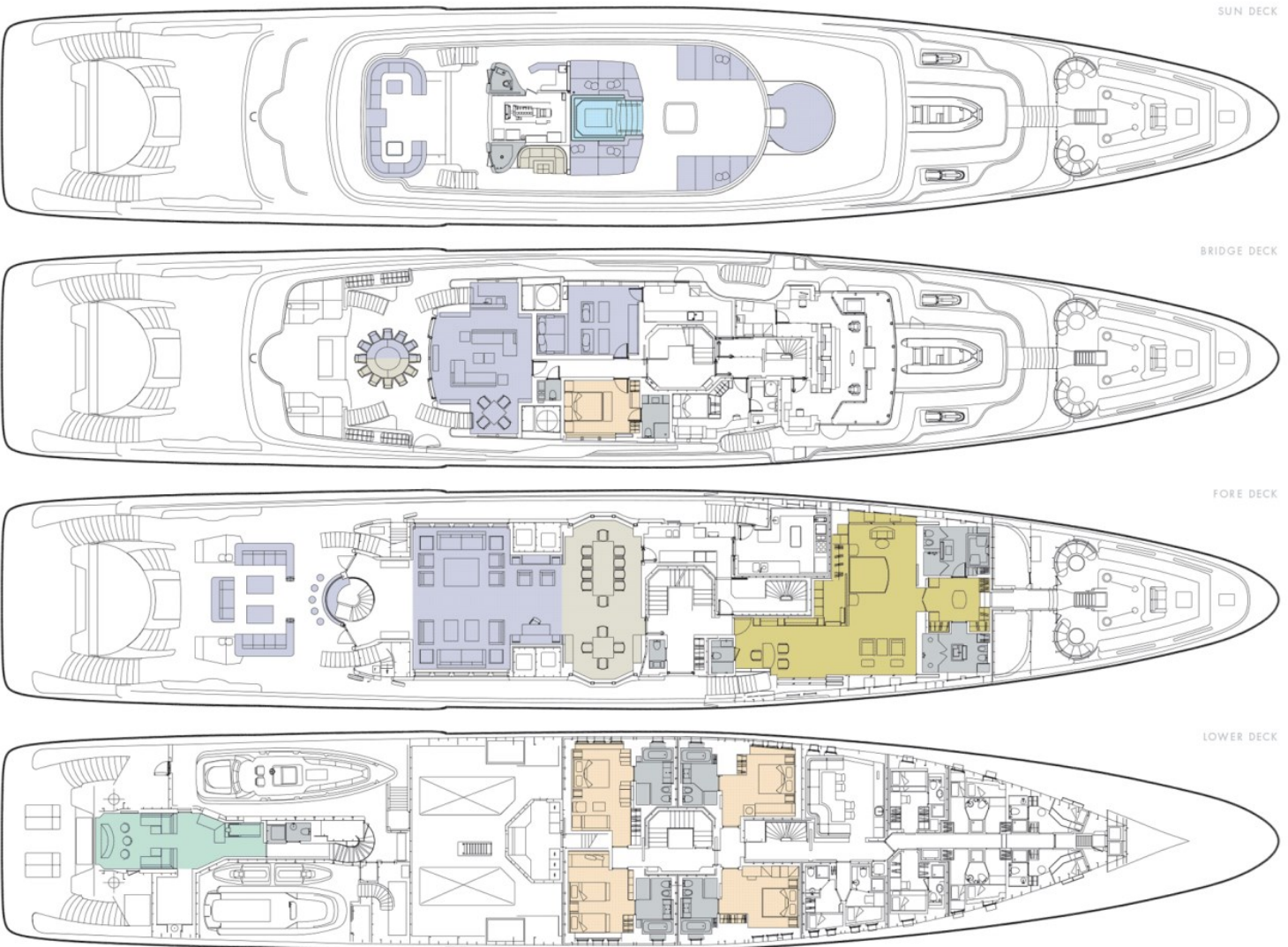
Massage room



On board masseuse

Communication & entertainment

State-of-the-art audio-visual systems, TV streaming services for live & on demand TV, karaoke, Satcom & cellular communications facilities, VSAT, Wi-Fi internet access



KEY	
DINING	
LOUNGES - EXTERIOR, INTERIOR, CINEMA	
MASTER SUITE	
GUEST ACCOMMODATION	
JACUZZI	
BATHROOMS	
GYM/SPA AND BEACH CLUB	

BURGESS

WORLD CLASS. WORLD WIDE.

London +44 20 7766 4300	Monaco +377 97 97 81 21	New York +1 212 223 0410	Miami +1 305 672 0150	Singapore +65 9665 8990	Beverly Hills +1 310 424 5112	Palma +34 971 495 413	Athens +30 210 967 1661
Dubai +971 4 425 5874	Phuket +66 7623 9739	Hong Kong +852 6496 2094	Tokyo +81 46 738 8612	Sydney +61 499 945 557	Mumbai +91 98211 67253	Shanghai +86 187 0898 6800	

Advertising of these vessel(s) in printed publications, on the internet or in any other medium is not permitted without prior written permission from Burgess. All particulars are given in good faith and are believed correct but they cannot be guaranteed.

Last updated: 18 April 2024