

SILVER DREAM



SILVER DREAM

APERÇU.

With her slick silver and black profile SILVER DREAM is instantly recognisable. Known for her sophisticated styling and first-class crew, she is a perennial charter favourite.

SILVER DREAM ingeniously maximises her interior space with an expansive main saloon and dining area that continue the silver and black theme, accented with striking Aboriginal artwork. The bridge deck sky lounge has a calm, neutral colour scheme and large windows that spill plenty of natural light, making it the ideal place to retreat from the heat of the sun.

The cleverly designed sun deck provides ample seating and sunbathing space under collapsible parasols, while the jacuzzi aft is easily at hand for guests to plunge in and cool off. But, for the ultimate private sunspot, head forward of the bridge and take in the view from the luxurious double sun pad. Kick back with a pre-dinner cocktail on the bridge deck, then let the crew serve a spectacular al fresco dinner at the circular table on the main deck aft.

The supremely spacious full beam master suite incorporates its own saloon, study, dressing room and his and her bathrooms, with gently curved shapes and warm tones creating a peaceful ambience. The rest of the guest accommodation is made up of two double and two twin cabins on the lower deck which provide a welcoming retreat at the end of the day.

SILVER DREAM has an abundance of watertoys, guaranteeing plenty of entertainment on, above and below the waterline.

Principales caractéristiques

Projector screen in the sky lounge provides on board cinema experience

Gym

On board masseuse and spa therapist

Swim platform/watersports area with an extensive selection of watertoys

Sun deck jacuzzi

SILVER DREAM

At anchor



Main deck lounge



Main deck lounge



Dining room



SILVER DREAM

Main deck atrium



Dining room



Main deck starboard side



Master suite



SILVER DREAM

Master suite



Master suite office



Master bathroom (hers)



Master shower room (his)

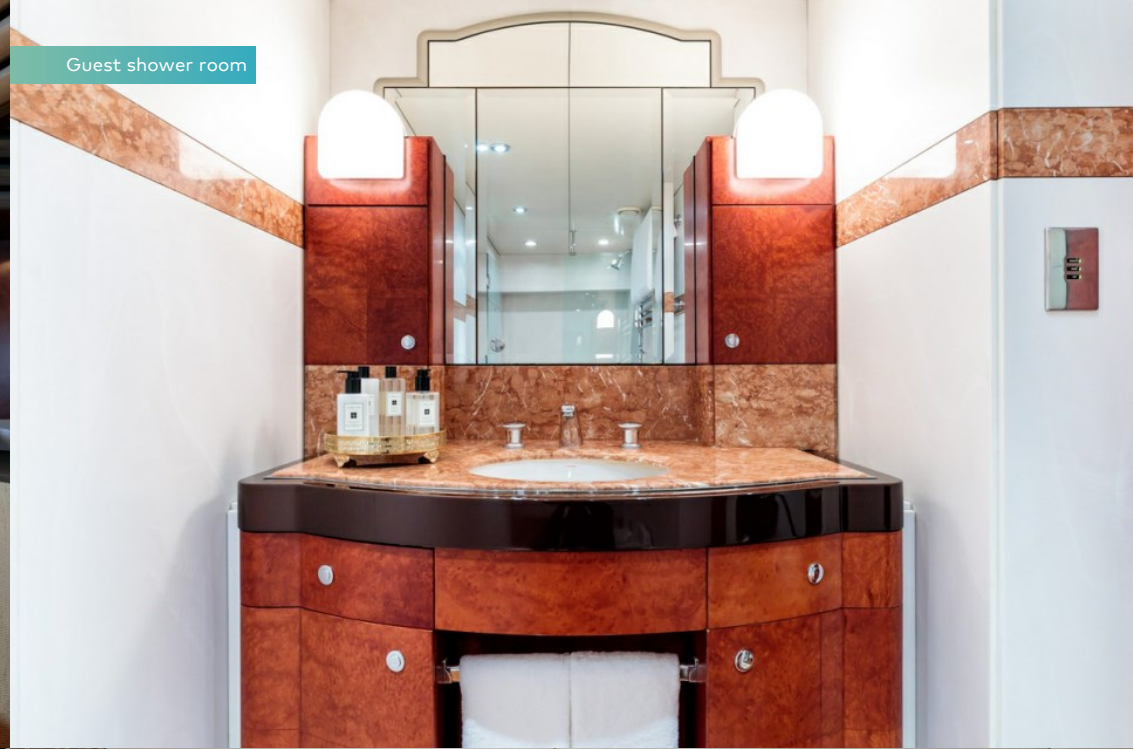


SILVER DREAM

Double cabin



Guest shower room



Twin cabin



Double cabin



SILVER DREAM

Twin cabin



Sky lounge



Sky lounge cinema screen



On board spa treatments



SILVER DREAM

Spa treatment products



Bridge



Aft deck dining



Dining details



SILVER DREAM

Main deck aft



Bridge deck aft



Main deck aft



Sun deck



SILVER DREAM

Sun deck jacuzzi



Sun deck



Overhead views



Foredeck



SILVER DREAM

Gym



Watersports



Toys



Watersports



SILVER DREAM

Swim platform



Transom



Cruising



At anchor



SILVER DREAM

SPÉCIFICATIONS.



Longueur
43,8m



Chantier
2001 (refurbished 2019), Warren Yachts, Australia



Designer d'intérieur
Thomas Hamel/Sam Sorgiovanni



Largeur
8,5m



Tirant d'eau
2,1m



Tonnage brut
395



Vitesse de croisière
12 knots



Vitesse maximale
17,4 knots



Consommation de carburant en vitesse de croisière
240 litres par heure



Moteurs
2 x 1 350hp Caterpillar



Invités
10



Nb de cabines invités
5 (3 x double, 2 x twin)



Équipage
10

[Voir le yacht sur le site](#)

[Regarder la vidéo du yacht](#)



Annexes & jeux nautiques



2 x Tenders



1 x Sailing dinghy



1 x Deck jacuzzi



Inflatable platform



RYA training centre for jetskis & waverunners



2 x Waverunners



1 x SeaBob



1 x Underwater scooter



1 x eFoil



2 x Kayaks



2 x Stand up paddleboards



Wakeboard



Wakesurf



Wakeskate



Kneeboard



Waterskis



Inflatable tows








Fishing gear



Snorkelling gear

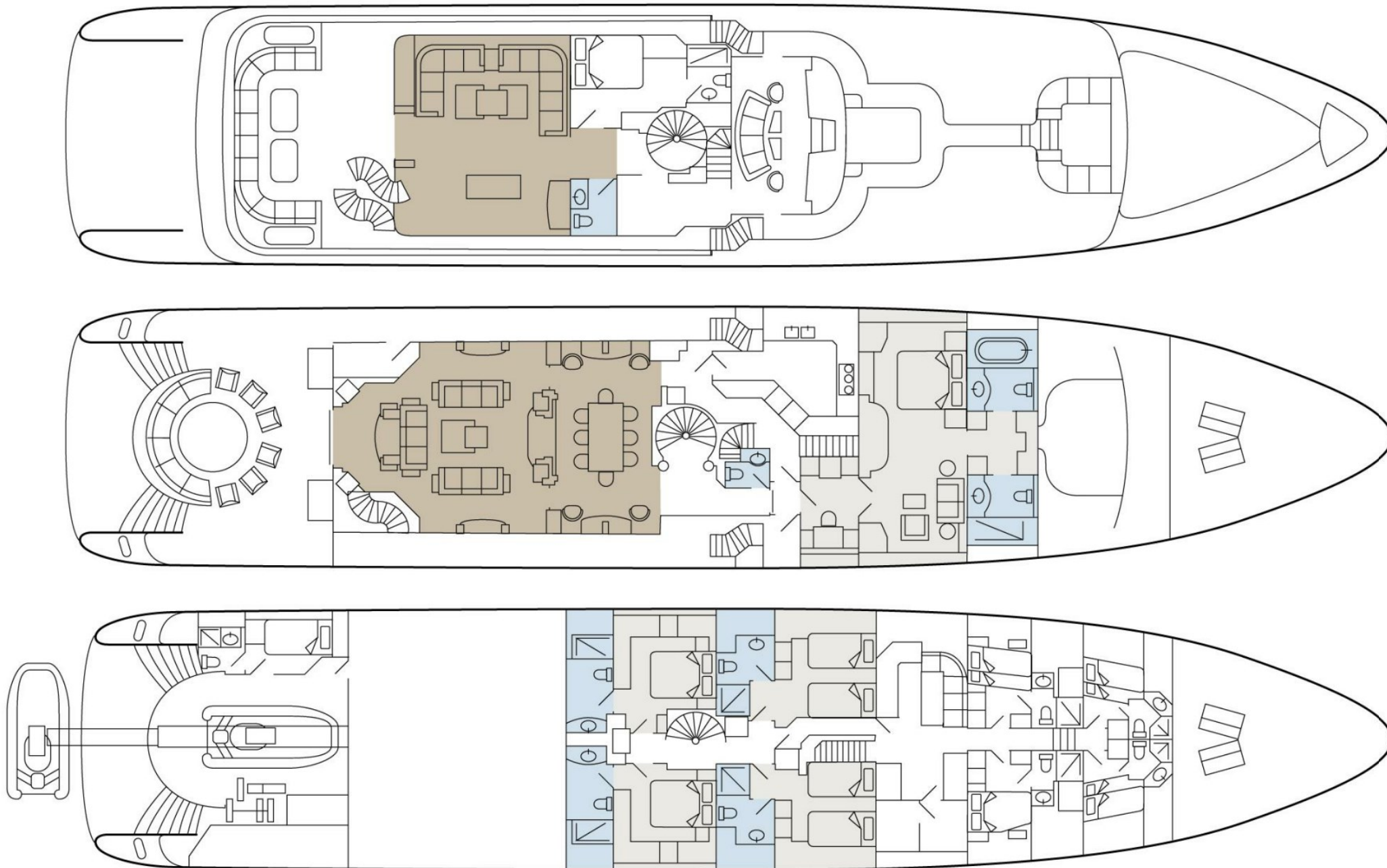
5.5m Castoldi jet tender with 125hp engine | 4.5m Rescue tender with 25hp engine | 2 x Sea-Doo Spark Rotax 900 ACE waverunners (2 man) | 2 x stand up paddleboards | 2 x inflatable kayaks | Waterskis | Wakeboard & tows | Wakeskate | Fishing gear | Snorkelling gear | Approved RYA training centre for personal watercraft

Remise en forme & bien-être

-  Boxing equipment
-  Exercise balls
-  Free weights
-  Personal trainer
-  Rowing machine
-  Suspension trainer
-  Training bench
-  Upright stationary bike

Communication et divertissement

Comprehensive audio-visual systems | Satellite television (in restricted areas) | Apple TV | Satcom & cellular communications facilities | Fleet 55 | Wi-Fi internet access



BURGESS

WORLD CLASS.
WORLD WIDE.

London +44 20 7766 4300	Monaco +377 97 97 81 21	New York +1 212 223 0410	Miami +1 305 672 0150	Singapore +65 9665 8990	Beverly Hills +1 310 424 5112	Palma +34 971 495 413	Athens +30 210 967 1661
Dubai +971 4 425 5874	Phuket +66 7623 9739	Hong Kong +852 6496 2094	Tokyo +81 46 738 8612	Sydney +61 499 945 557	Mumbai +91 98211 67253	Shanghai +86 187 0898 6800	Rio de Janeiro +55 21 2553-3238

La publicité de ce(s) navire(s) dans des publications imprimées, sur Internet ou sur tout autre support n'est pas autorisée sans l'autorisation écrite préalable de Burgess.
Toutes les informations sont données de bonne foi et sont considérées comme exactes, mais elles ne peuvent être garanties.

Dernière mise à jour : 15 mai 2024