

# SERENITY II

---



SERENITY II

# SPECIFICATION.



Asking price  
**EUR 7,350,000 (Tax paid)**



Built  
**2010 (refitted 2021), Mengi-Yay, Turkey**



Length  
**40.1m (131.5ft)**



Beam  
**7.9m (25.9ft)**



Draft  
**2.5m (8.2ft)**



Gross tonnage  
**394**



Cruising speed  
**11 knots**



Maximum speed  
**13 knots**



Range  
**2,000 nm**



Flag  
**Malta**



Lying  
**West Mediterranean**



Class  
**RINA Services S.p.A. (RINA)**



Exterior designer  
**Endaze Muhendislik**



Interior designer  
**H2 Yacht Design**



Construction  
**Hull - Steel, Superstructure - Aluminium, Deck - Teak**



Crew  
**7**



Guests  
**13**



Cabins  
**6 (6 × double, 1 × additional berth)**



Engines  
**2 × 1,240hp Caterpillar**



Propulsion  
**Twin screw diesel yacht**

[View yacht on website](#)

[Watch yacht video](#)



# SERENITY II

Main deck lounge



Main deck lounge



Main deck lounge bar



Main deck dining area



# SERENITY II

Master cabin



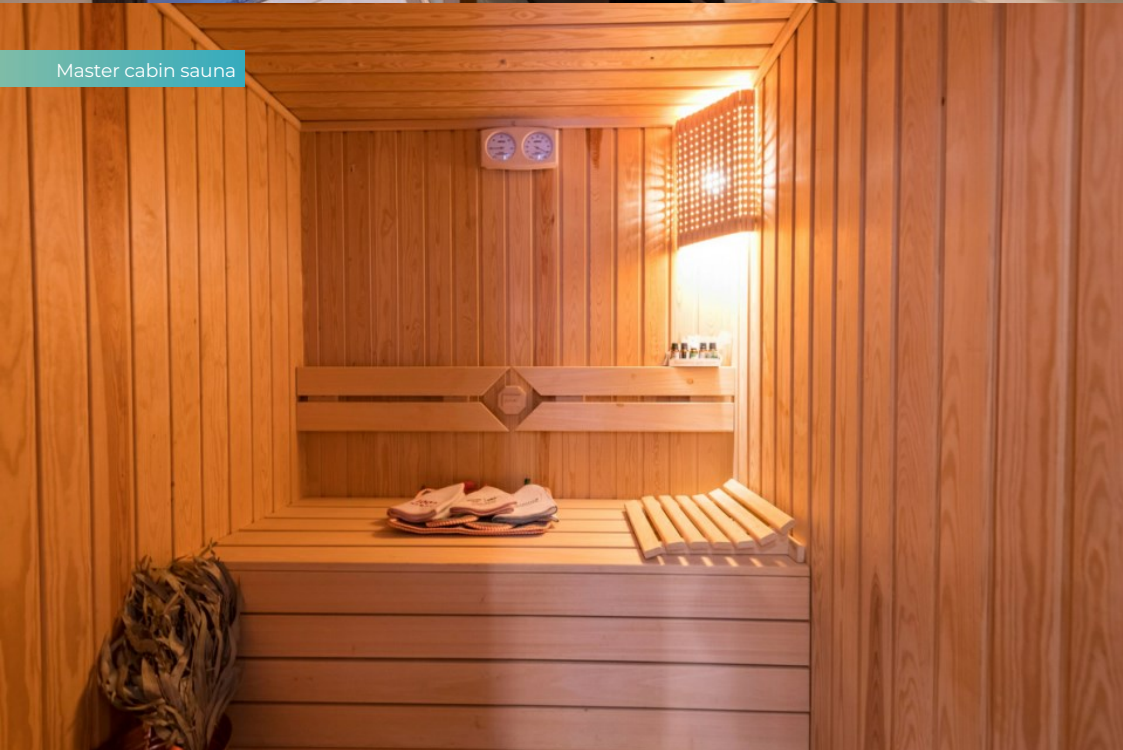
Master en suite bathroom



Master en suite bathroom



Master cabin sauna

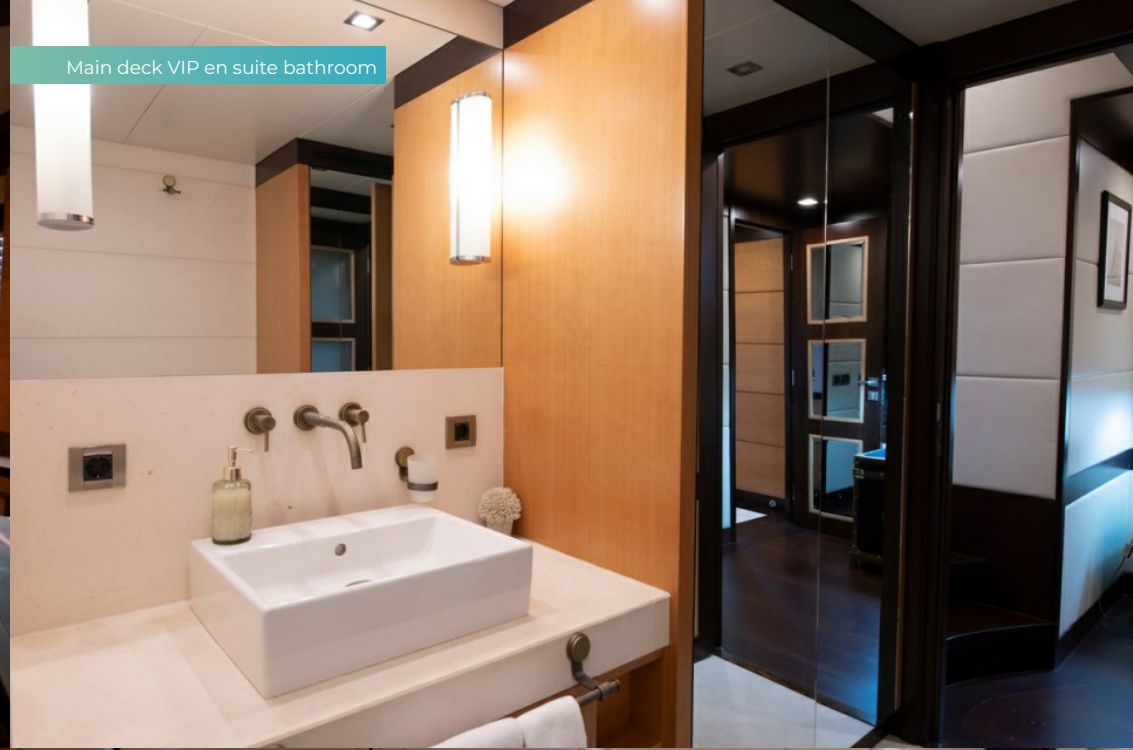


## SERENITY II

Main deck VIP cabin



Main deck VIP en suite bathroom



Lower deck VIP cabin



Lower deck VIP en suite bathroom



## SERENITY II

Lower deck VIP cabin



Lower deck VIP cabin en suite bathroom



Lower deck double cabin



Bridge



# SERENITY II

Engine room



Galley



Crew mess



Main deck aft



# SERENITY II

Bridge deck aft



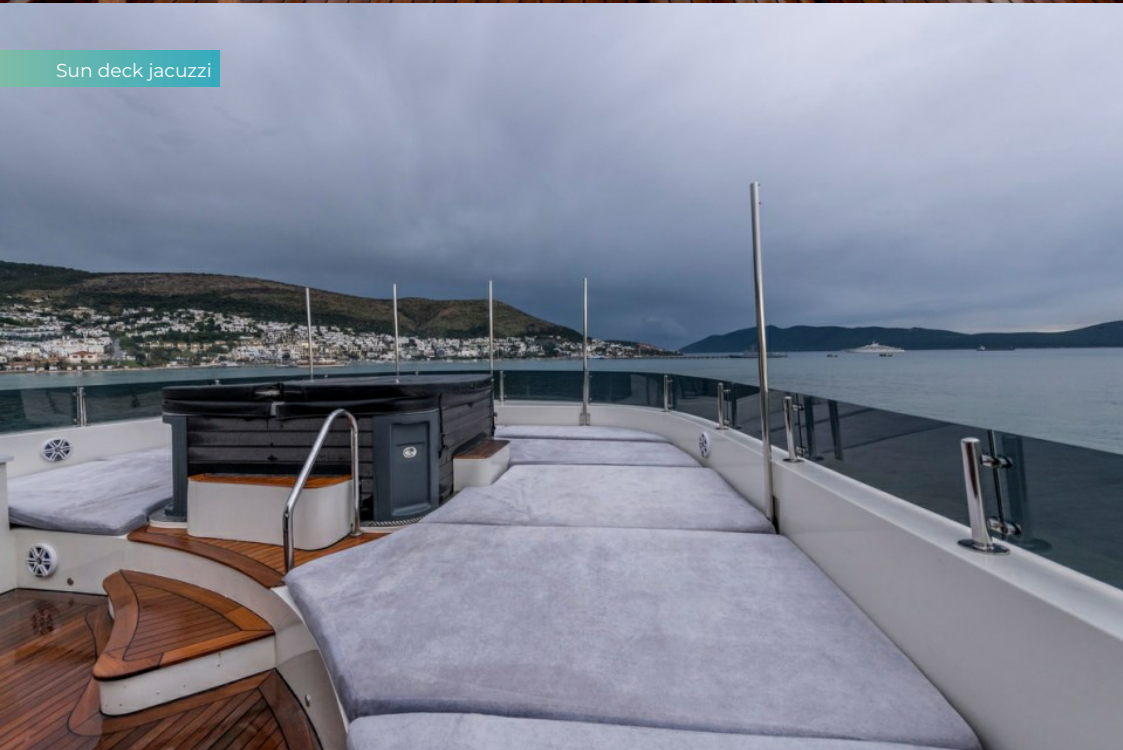
Sun deck



Sun deck bar



Sun deck jacuzzi





# SERENITY II

At anchor



At anchor



At anchor



Cruising



SERENITY II

# OVERVIEW.

**Custom built by Mengi-Yay Yachts in Turkey in 2010, SERENITY II is a 40m (131.2ft) luxury yacht. With her steel hull and aluminium superstructure, her top speed is 13 knots, and she cruises at 11 knots. Her engineering and external design comes from the draft board of Endaze Muhendislik, and her interior was conceived by H2 Yacht Design.**

Known for her elegant lines, SERENITY II features walkaround teak decks and uses her internal space to capacity. Forward on the main deck, the unusual 180-degree windows create amazing views in the VIP guest suite, which also has private use of the foredeck.

The upper deck is mainly given over to the owner's suite: an aft facing cabin with floor to ceiling sliding glass doors opening onto the aft deck for their private dining and relaxation. The décor is cool and luxurious in silver-grey and cream, upholstered walls and Macassar cabinetry.

Forward on the upper deck is the well-equipped bridge where full beam windows line the cabin creating an uninterrupted view for the helm.

Another full beam VIP guest suite is situated on the lower deck, this has a bed positioned at an angle to help prevent discomfort. The yacht also has zero speed stabilisers to smooth her motion when underway and at anchor. There are three further double cabins on the lower deck. SERENITY II accommodates up to 13 guests in six cabins.

For living space, the main deck offers a saloon with an open plan lounge-dining room and a bar, which leads a partially covered aft deck with an outdoor table and banquette seating. On the extensive sun deck, guests can dine outside at another large table, sheltered by the hardtop, or sunbathe on the sunpads surrounding the jacuzzi forward. Plus there a sit-up bar.

The tender is a 5.8m Golden Line G580 with 150hp Mercury, which is stored on the upper aft deck, with a crane to launch. A 4.2m Golden Line with 90hp Mercury is stored on the lower deck, accessed through the transom. Also a range of water toys: jetskis, wakeboards, waterskis, scuba gear and towables.

SERENITY II needs nine crew to operate to her full potential. The captain has a double cabin by the bridge, the rest of the crew quarters are on the lower deck, including a dedicated mess room.

Turn-key and ready for new ownership, SERENITY II has been well maintained and consistently upgraded over the years. In 2022 she completed an extensive flag and classification survey, and then received a full hull repaint in 2021.

## Key features

---

**Warm and contemporary interior design by H2 Yacht Design**

---

**Aft facing master cabin, with private terrace**

---

**Forward facing VIP cabin, with 180-degree views**

---

**Large sun deck with jacuzzi, sun lounging, and al fresco dining**

---

**Transom tender garage for water toys**

---

**RINA class and MCA compliant**

---

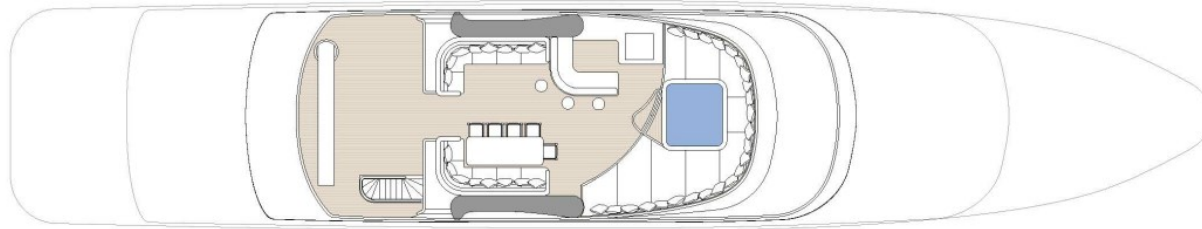
## Tenders

---

1 x 5.8m Golden Line G580 12-person, 2018, 150hp Mercury, 1 x 4.2m Golden Line 6-person, 2018, 90hp Mercury

# SERENITY II

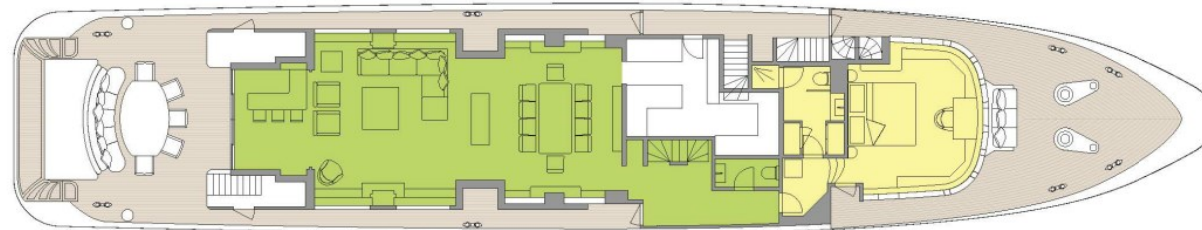
Deck plans



SUN DECK



UPPER DECK



MAIN DECK



LOWER DECK

■ GUEST AREAS ■ MASTER SUITE ■ VIP SUITE ■ GUEST CABINS ■ HAMMAM ■ JACUZZI

# BURGESS

# WORLD CLASS. WORLD WIDE.

<b>London</b> +44 20 7766 4300	<b>Monaco</b> +377 97 97 81 21	<b>New York</b> +1 212 223 0410	<b>Miami</b> +1 305 672 0150	<b>Singapore</b> +65 9665 8990	<b>Beverly Hills</b> +1 310 424 5112	<b>Palma</b> +34 971 495 413	<b>Athens</b> +30 210 967 1661
<b>Dubai</b> +971 4 425 5874	<b>Phuket</b> +66 7623 9739	<b>Hong Kong</b> +852 6496 2094	<b>Tokyo</b> +81 46 738 8612	<b>Sydney</b> +61 499 945 557	<b>Mumbai</b> +91 98211 67253	<b>Shanghai</b> +86 187 0898 6800	<b>Rio de Janeiro</b> +55 21 2553-3238
<b>Aspen</b> +1 970 710 2294							

Advertising of these vessel(s) in printed publications, on the internet or in any other medium is not permitted without prior written permission from Burgess. All particulars are given in good faith and are believed correct but they cannot be guaranteed.

Last updated: 24 February 2025