

# SERENITY

---



# OVERVIEW.

Extensive accommodation is one of the main features of this voluminous superyacht. SERENITY offers accommodation for 30 guests in fifteen cabins comprising a master suite with balcony on its own private deck, six VIP suites, five double cabins and two twin cabins, all of which include en suite facilities. To service the guests onboard there are 31 crew.

There are large windows on the main deck that give a panoramic view in the formal dining area as well as an abundance of natural light. The dining area is complemented by a large central bar. Notable features on SERENITY are the large well equipped gym, cinema, massage room and beauty salon, beach club, sauna.

She has an extraordinary amount of exterior deck space for relaxing and enjoying life on board. On the sun deck there is a large jacuzzi surrounded by sun pads and sun loungers as well as a lounge area aft. The master deck has a large terrace aft with abundant seating around the edges and a private dining table for 10 guests. The upper deck aft has a variety of seating areas for open air dining and snacking during the day and there is another lounge area on the main deck aft.

Originally built in 2003 by Austal Shipyards in Australia as a mini cruise ship, SERENITY was rebuilt as a private superyacht in 2017. She features exterior design from Luiz de Basto and AskDeco for the interior design. Her top speed is 17 knots and SERENITY offers a maximum cruising range of 2,000nm at 12 knots powered by twin 1,073hp MTU diesel engines.

## Key features

---

**Spa facilities: massage room, beauty room**

---

**Private master deck**

---

**Fully equipped gym**

---

**Can accommodate up to 28 guests**

---

**Six VIP cabins**

---

**Jacuzzi on the sun deck**

---

**Zero speed stabilisers to reduce any rolling motion while at anchor**

---

SERENITY

# SPECIFICATION.



Length  
**72m (236.2ft)**



Built  
**2004 (rebuilt 2017), Austal, Australia**



Interior designer  
**Austal**



Beam  
**13.8m (45.3ft)**



Draft  
**2.4m (7.9ft)**



Gross tonnage  
**1,691**



Cruising speed  
**12 knots**



Maximum speed  
**20 knots**



Fuel consumption at cruising speed  
**390 litres per hour**



Engines  
**2 x 1,073hp MTU**



Guests  
**28**



No. of guest cabins  
**14 (12 x double, 2 x twin)**



Crew  
**30**

## Note

Fully licensed for charters in Greek waters.















[View yacht on website](#)

SERENITY

# EQUIPMENT.

## Tenders & toys

---

- |  |   |   |  |   |
|--|---|---|--|---|
|  2 x Tenders     |  Pool                      |  3 x Waverunners |  2 x SeaBobs      |  1 x Jetsurf |
|  3 x Kayaks      |  3 x Stand up paddleboards |  Wakeboard       |  Kneeboard        |  Waterskis   |
|  Inflatable toys |  Scuba diving equipment    |  Fishing gear    |  Snorkelling gear |   |

# Fitness & wellness



Cross trainer



Exercise balls



Free weights



Multi gym



Resistance bands



Treadmill



Upright stationary bike



Yoga mats



Beauty salon



Hammam/Steam room



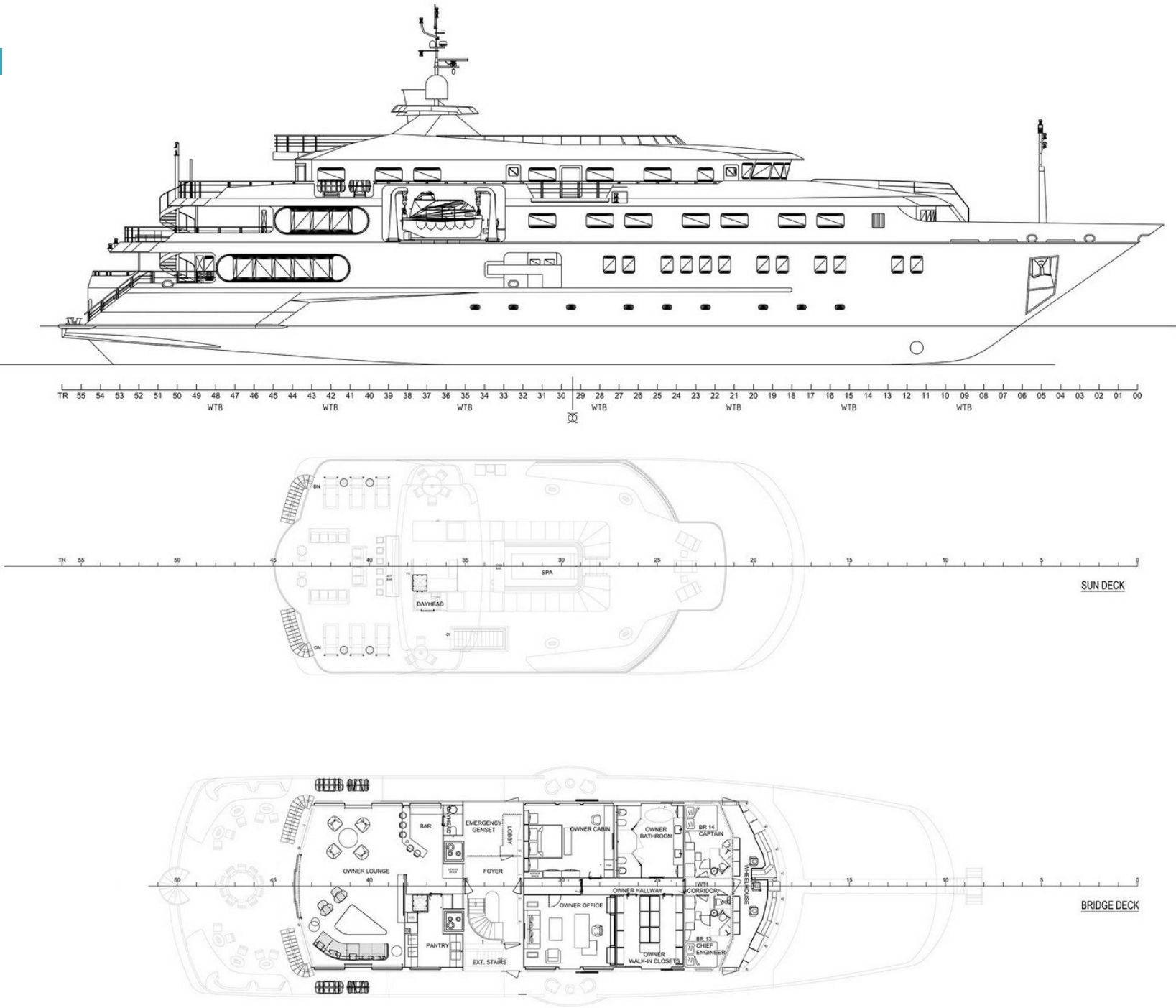
Massage room





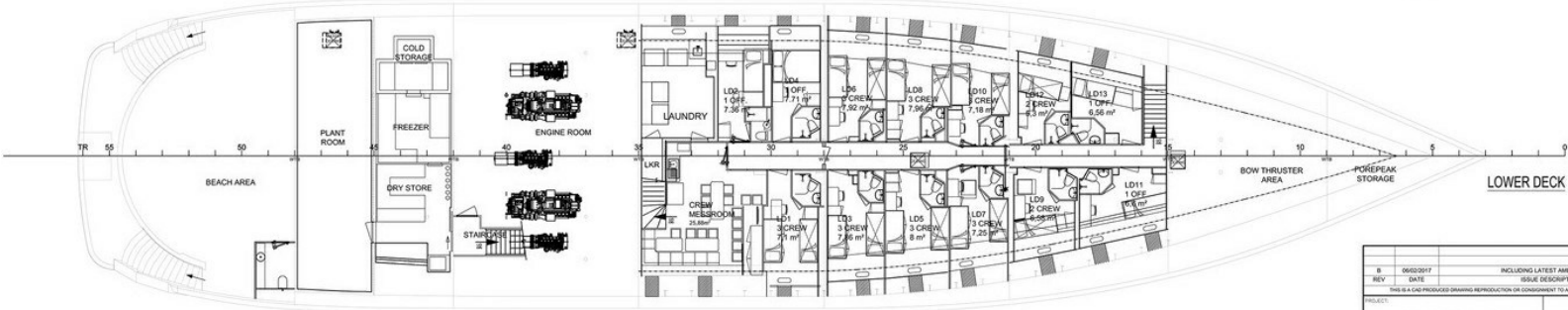
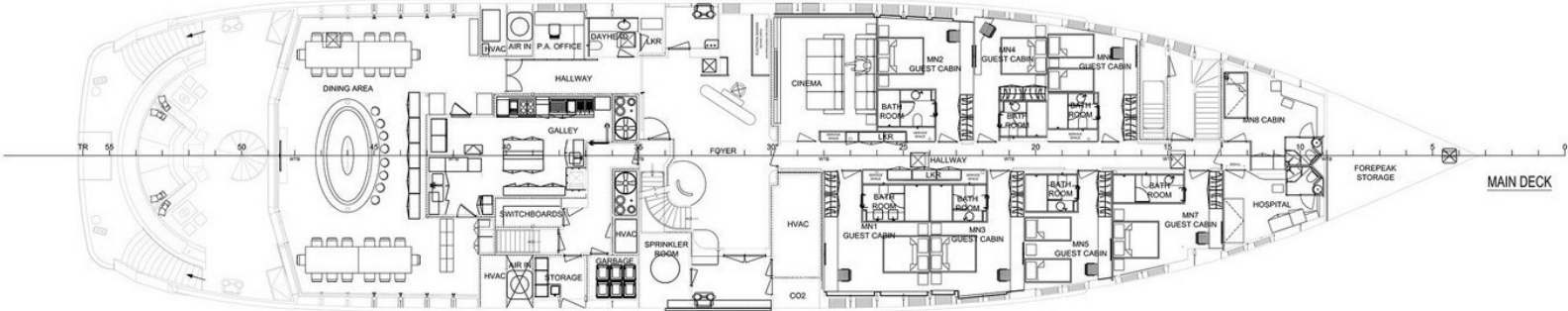
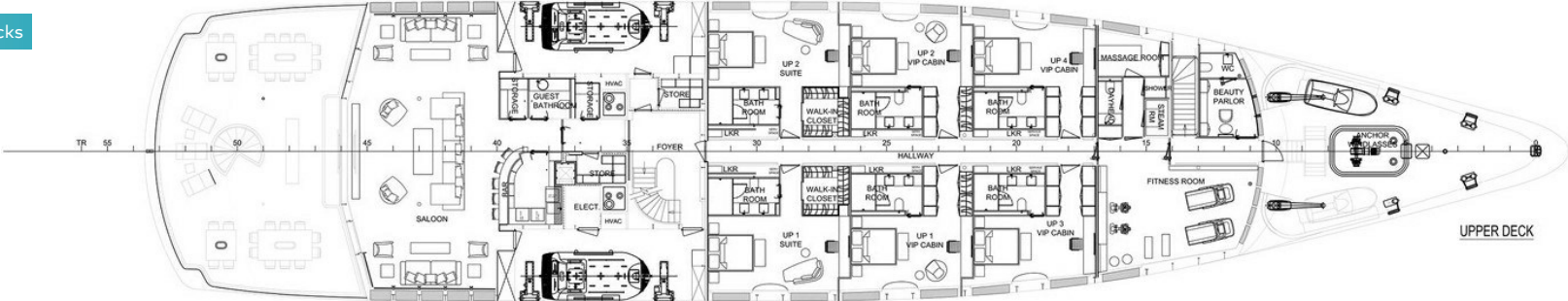
SERENITY

Profile, sun & bridge decks



SERENITY

Upper, main & lower decks



PRINCIPAL PARTICULARS	
L.O.A.	69.10m
Length Waterline @2.4M	60.0m
Beam (Moulded)	13.80m
Draught Scantling	2.40m
Depth Moulded	4.80m

B		09/03/2017		INCLUDING LATEST AMENDMENTS			
REV		DATE		ISSUE DESCRIPTION			
THIS IS A PRELIMINARY DRAWING. REPRODUCTION OR CONSENT TO A THIRD PARTY IS PROHIBITED.							
PROJECT							
MY SERENITY							
GENERAL ARRANGEMENT PLAN							
G1303 - 100		SCALE: 1:100 (A3)		REV: B			

# BURGESS

# WORLD CLASS. WORLD WIDE.

London	Monaco	New York	Miami	Singapore	Beverly Hills	Palma	Athens
+44 20 7766 4300	+377 97 97 81 21	+1 212 223 0410	+1 305 672 0150	+65 9665 8990	+1 310 424 5112	+34 971 495 413	+30 210 967 1661
Dubai	Phuket	Hong Kong	Tokyo	Sydney	Mumbai	Shanghai	
+971 4 425 5874	+66 7623 9739	+852 6496 2094	+81 46 738 8612	+61 499 945 557	+91 98211 67253	+86 187 0898 6800	

Advertising of these vessel(s) in printed publications, on the internet or in any other medium is not permitted without prior written permission from Burgess. All particulars are given in good faith and are believed correct but they cannot be guaranteed.

Last updated: 15 April 2024