

# SENSES



SENSES

# APERÇU.

**Think of adventure. Think Senses. Purpose-built for expedition cruising, she and her close-knit crew have quite literally travelled the world in search of the best surfing, diving and fishing spots. Because once-in-a-lifetime experiences are what Senses does best. A globetrotting 6,000 nautical mile range gives her the scope to explore any corner of the planet. While no less than 7 specialist expedition tenders allow her to get the most out of any destination.**

For a unique experience, you'll need a unique yacht. Senses is exactly that. With a range of onboard amenities, including a gym, a massage room, an observation deck and several deck areas made for relaxation and entertainment, wherever you are, fun and good times are guaranteed.

## Principales caractéristiques

---

**Massage table**

---

**Ice strengthened hull which makes her one of the few charter yachts which can cruise as far apart as 75 degrees north and 75 degrees south**

---

**Full beam master suite with incredible views**

---

**Secluded exterior side balconies on the upper deck are the ideal spot for breakfast or sunset drinks with uninterrupted views**

---

SENSES

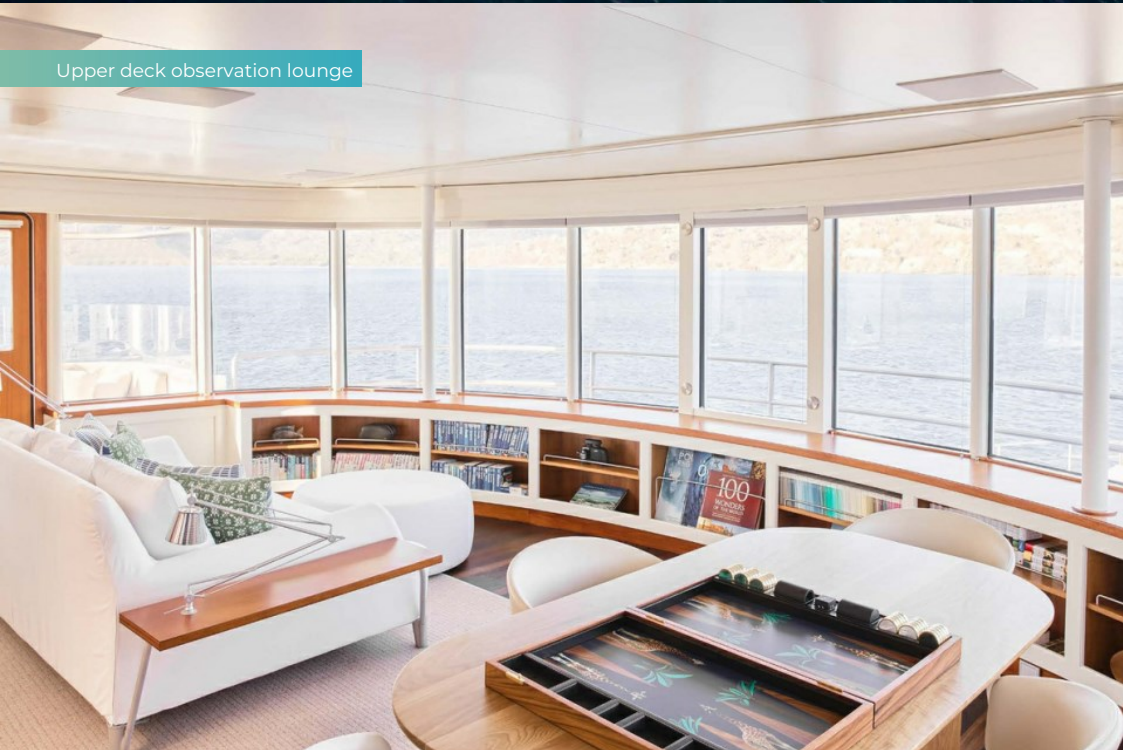
Aerial view



Upper deck jacuzzi



Upper deck observation lounge



Master cabin



BURGESS

Discover the difference.  
burgessyachts.com

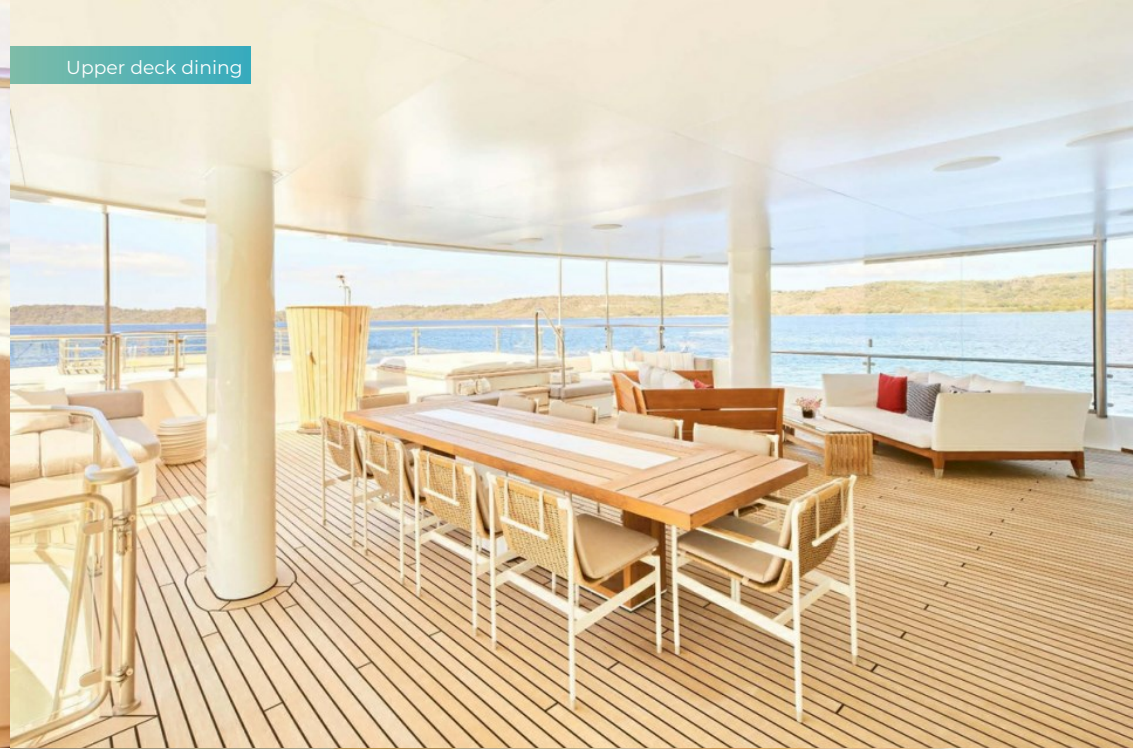


SENSES

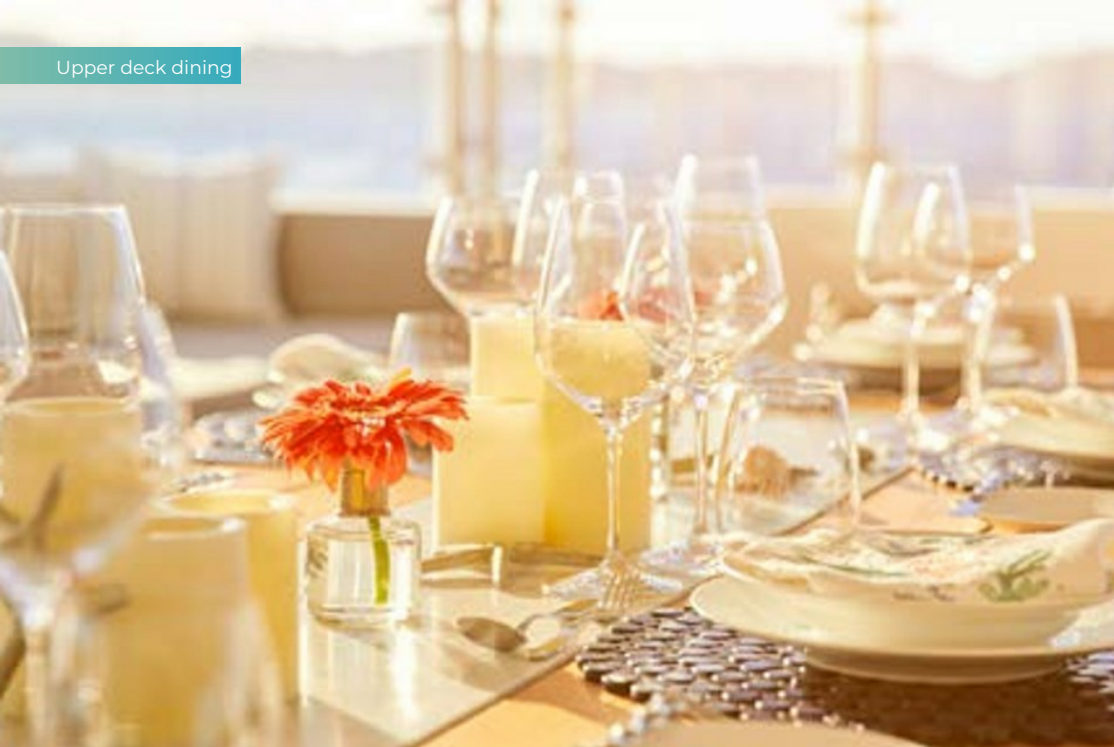
Upper deck



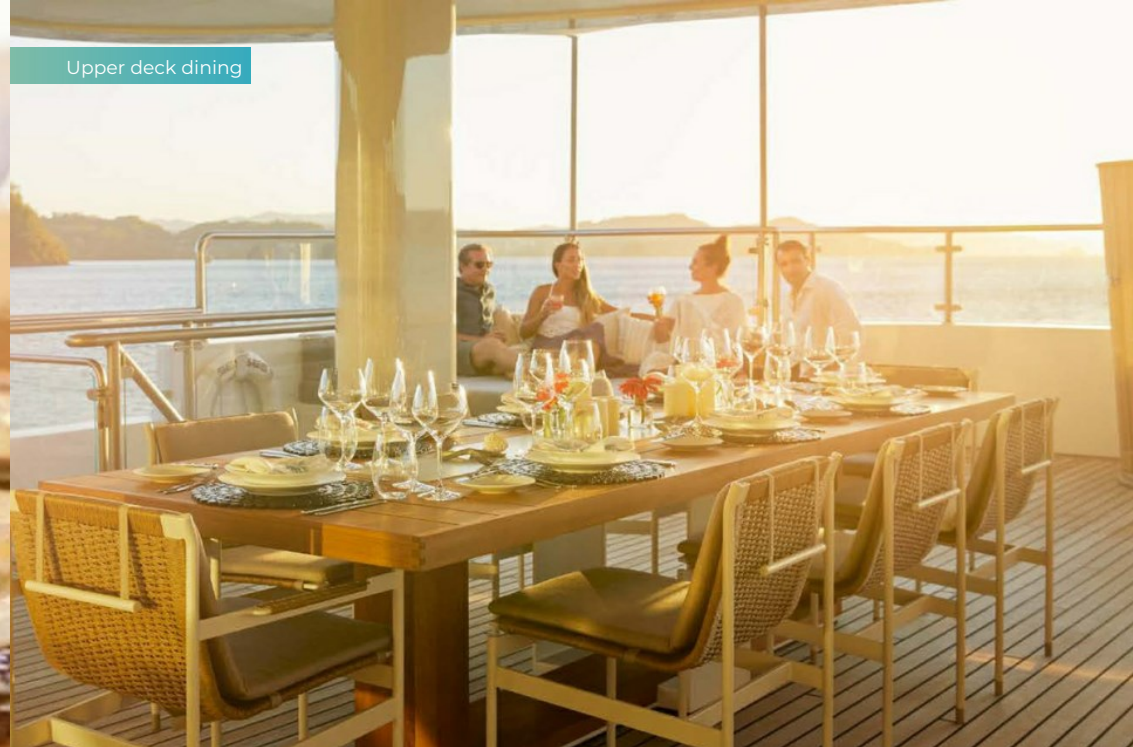
Upper deck dining



Upper deck dining



Upper deck dining

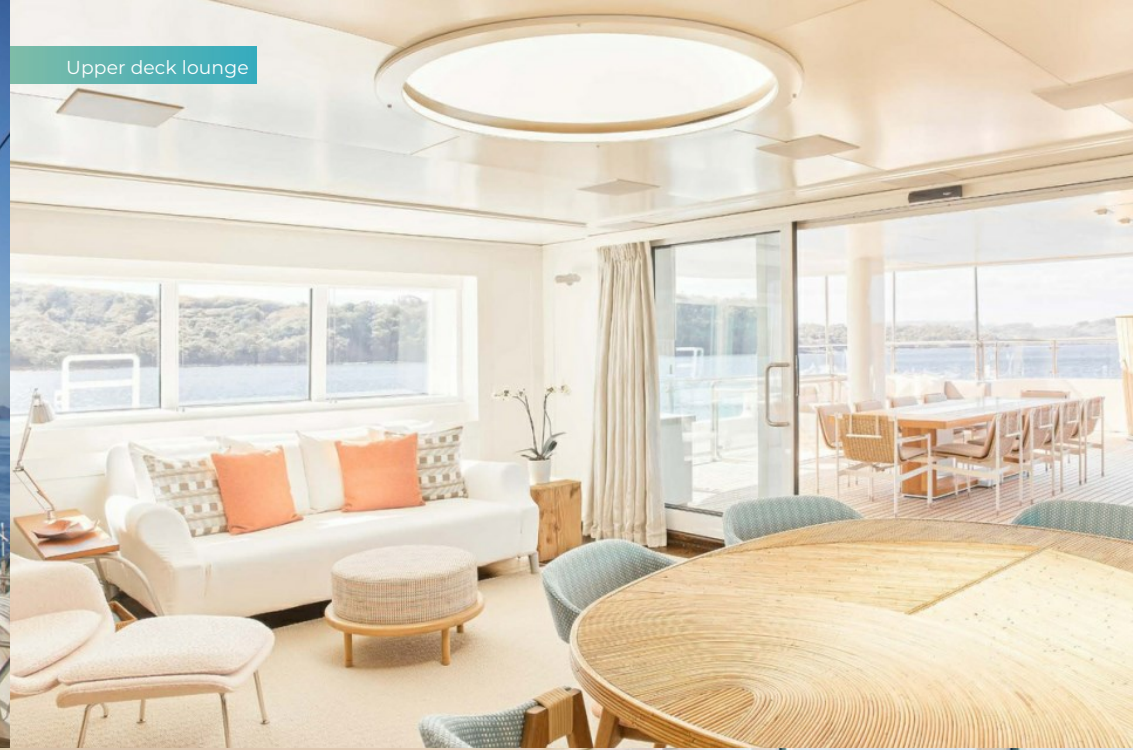


SENSES

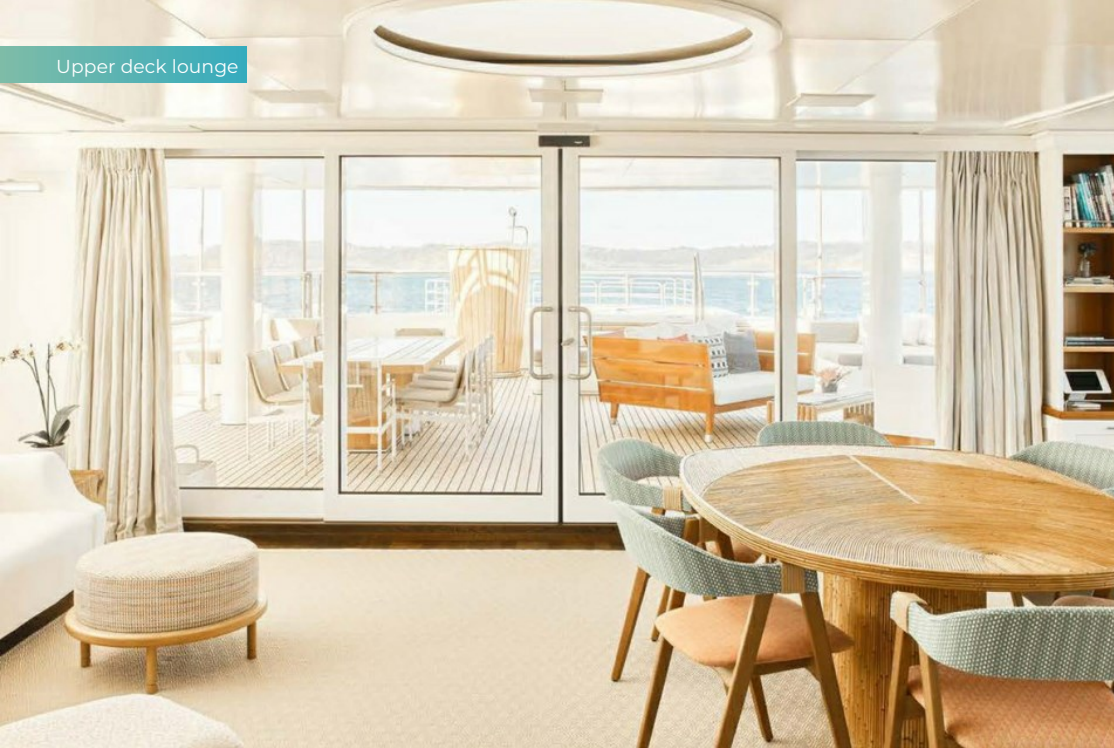
Secluded balcony



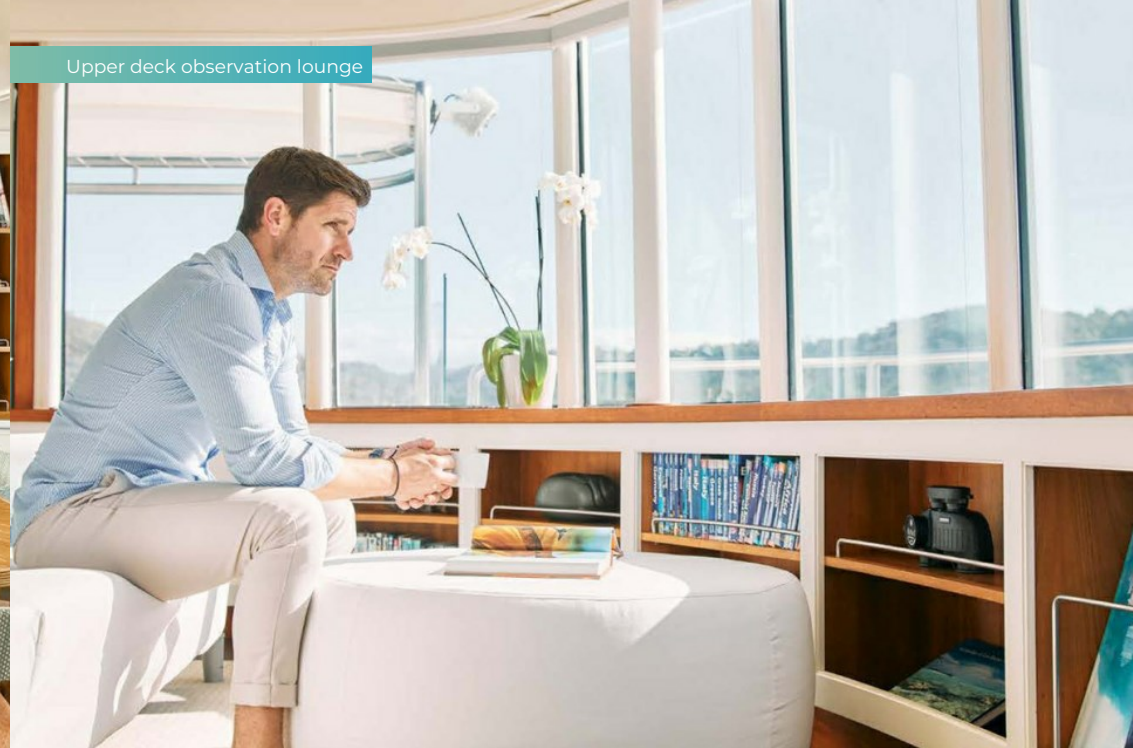
Upper deck lounge



Upper deck lounge



Upper deck observation lounge



SENSES

# SPECIFICATIONS.



Longueur  
**59,2m**



Chantier  
**1999 (refitted 2021), Fr. Schweers, Germany**



Designer d'intérieur  
**Miescke & Harder/ J.Setton**



Largeur  
**12,7m**



Tirant d'eau  
**4,5m**



Tonnage brut  
**993**



Vitesse de croisière  
**12 knots**



Vitesse maximale  
**15 knots**



Consommation de carburant en vitesse de croisière  
**400 litres par heure**



Moteurs  
**2 x 1 600hp Deutz**



Invités  
**12**



Nb de cabines invités  
**5 (3 x double, 2 x twin, 2 x additional berths)**



Équipage  
**16**

[Voir le yacht sur le site](#)



# ANNEXES & JEUX NAUTIQUES



6 × Tenders



2 × Sailing dinghies



Waterslide



Trampoline



4 × Waverunners



2 × Stand up jetskis



4 × SeaBobs



1 × Jetsurf



3 × eFoils



12 × Stand up paddleboards



Surfboard



Kite surfing equipment



Fishing gear

SENSES

# REMISE EN FORME & BIEN-ETRE



Rowing machine



Upright stationary bike



Massage room



# BURGESS

# WORLD CLASS. WORLD WIDE.

<b>London</b> +44 20 7766 4300	<b>Monaco</b> +377 97 97 81 21	<b>New York</b> +1 212 223 0410	<b>Miami</b> +1 305 672 0150	<b>Singapore</b> +65 9665 8990	<b>Beverly Hills</b> +1 310 424 5112	<b>Palma</b> +34 971 495 413	<b>Athens</b> +30 210 967 1661
<b>Dubai</b> +971 4 425 5874	<b>Phuket</b> +66 7623 9739	<b>Hong Kong</b> +852 6496 2094	<b>Tokyo</b> +81 46 738 8612	<b>Sydney</b> +61 499 945 557	<b>Mumbai</b> +91 98211 67253	<b>Shanghai</b> +86 187 0898 6800	<b>Rio de Janeiro</b> +55 21 2553-3238
<b>Aspen</b> +1 970 710 2294							

La publicité de ce(s) navire(s) dans des publications imprimées, sur Internet ou sur tout autre support n'est pas autorisée sans l'autorisation écrite préalable de Burgess.  
Toutes les informations sont données de bonne foi et sont considérées comme exactes, mais elles ne peuvent être garanties.

Dernière mise à jour : 30 janvier 2025