

SEAFLOWER



SEAFLOWER

SPÉCIFICATIONS.



Prix demandé
EUR 22 500 000



Chantier
2023, Mulder Shipyards, The Netherlands



Longueur
36m



Largeur
8m



Tirant d'eau
2,1m



Tonnage brut
296



Vitesse de croisière
15 knots



Vitesse maximale
16,8 knots



Pavillon
Malta



Position
West Mediterranean



Classe
ABS A1 YACHTING, AMS, MCA+LY3



Designer extérieur
Claydon Reeves



Designer d'intérieur
Vickers Studio



Construction
Hull - Aluminium, Superstructure - Aluminium



Équipage
5



Invités
10



Cabines
5 (3 x double, 2 x double/twin)



Moteurs
2 x 1 150hp Caterpillar



Propulsion
Twin screw diesel yacht

[Voir le yacht sur le site](#)



SEAFLOWER

Main deck aft



Main saloon



Main saloon lounge



Main saloon lounge



SEAFLOWER

Main saloon dining area



Master cabin



Master cabin



Master en suite bathroom



SEAFLOWER

Sun deck



Sun deck



Stern view



Cruising



SEAFLOWER

Cruising



SEAFLOWER

APERÇU.

The spectacular SEAFLOWER, hull six of the Mulder 36 series, has won the 2024 World Superyacht Award in the Semi-displacement or planning motor yachts 35-39.9m category. Acclaimed as 'truly impressive' by the judges, who noted the 'excellent value she presents for her size,' the 296GT SEAFLOWER is now offered for sale.

The 36m (118.1ft) yacht was constructed in aluminium to ABS classification and charter compliance by Mulder Shipyards and delivered to her very experienced owners, builders of many yachts, in 2023. Judges also applauded SEAFLOWER's 'tasteful custom interiors' by British Vickers Studio, along with exterior design by Claydon Reeves and the highly efficient Fast Displacement Hull Form (FDHF) technology by Van Oossanen Naval Architects.

Exterior guest spaces include a split-level sun deck with a bar and buffet serving a versatile space aft and a lounge and dining area for 10 guests beneath the hardtop.

There is a second open-air dining option on the main deck aft, and steps lead down to the beach club with dayhead and fold-down transom swim platform.

Sidedecks lead to steps up to a foredeck sun lounge with huge sunpad and an intimate lounge in the bow.

Inside on the main deck, a stylishly contemporary light-oak interior is illuminated with natural light through full-height windows.

There is a relaxing lounge area aft and a formal dining space forward. To starboard, sliding glass doors open onto a fold-down balcony to open up the space.

SEAFLOWER welcomes 10 guests in five cabins. The full-beam owner's suite, forward on the main deck, gets natural light through a huge skylight above the berth. There is sofa seating to port, en suite with shower room and a combined office and dressing room.

On the lower deck, highly versatile accommodation includes two double cabins and two convertible cabins, all en suite.

SEAFLOWER is the first Mulder 36 with IMO Tier III-compliant propulsion with twin 1,150hp Caterpillar diesel engines giving her a top speed of 18 knots, a cruising speed of 15 knots and a transatlantic range of 3,400nm at her passage speed of 10 knots. CMC zero speed stabilisers ensure guest comfort on arrival and a lower deck shell door to port opens to launch her 6.3m (20.7ft) Williams 625 DieselJet tender and two SeaDoos.

Principales caractéristiques

Winner at World Superyacht Awards 2024

Customised for a highly experienced multiple-yacht owner

Excellent opportunity to own a newly built yacht

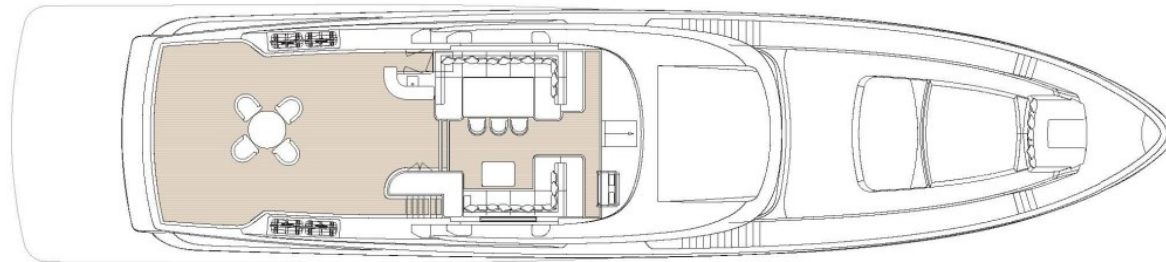
First Mulder 36m built to IMO Tier III emissions standards

Transatlantic range from super-efficient hull burning 100 litres/hour at 10kn

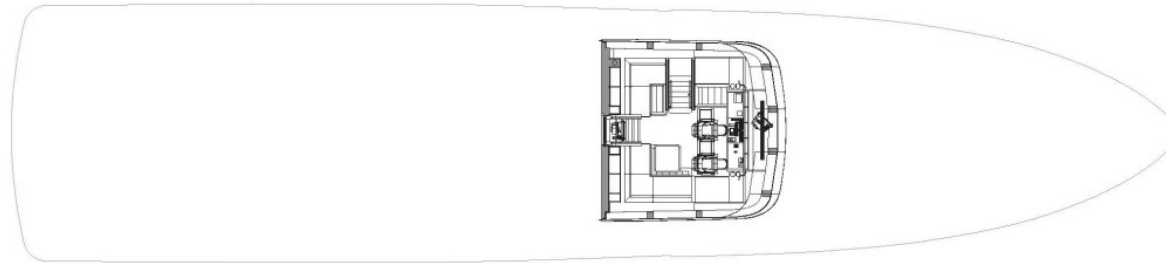
Large tender for a 36m yacht at 6.3m

Annexes

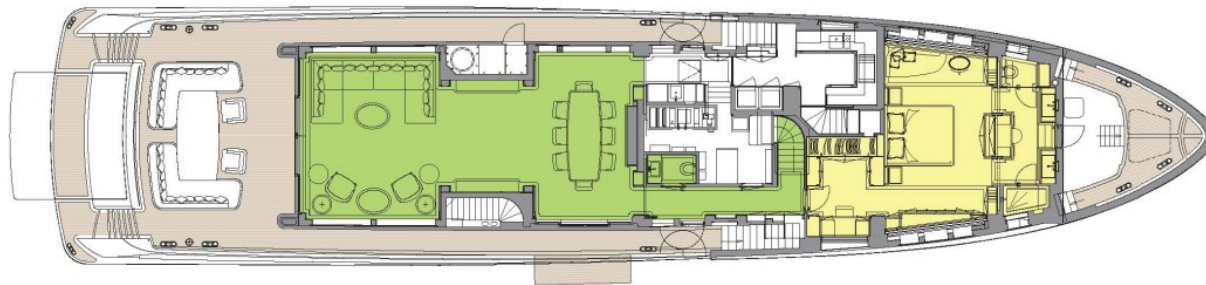
6.3m (20.7ft) Williams 625 DieselJet tender



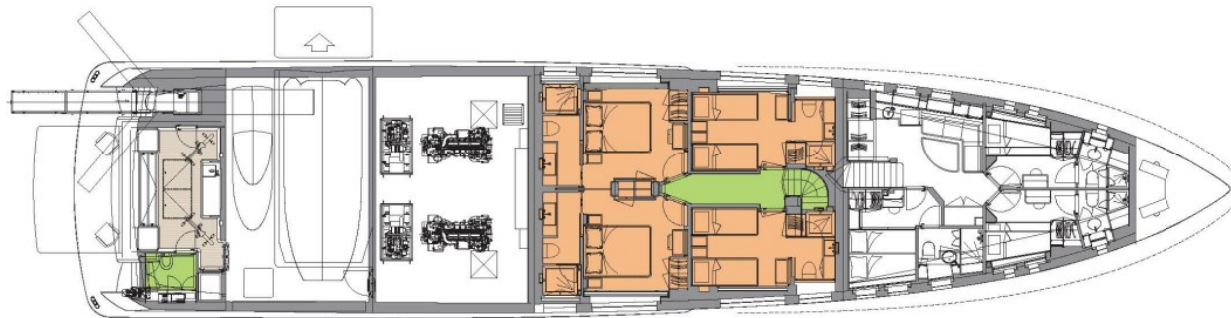
SUN DECK



WHEELHOUSE DECK



MAIN DECK



LOWER DECK

■ GUEST AREAS ■ MASTER SUITE ■ GUEST CABINS

BURGESS

WORLD CLASS.
WORLD WIDE.

London +44 20 7766 4300	Monaco +377 97 97 81 21	New York +1 212 223 0410	Miami +1 305 672 0150	Singapore +65 9665 8990	Beverly Hills +1 310 424 5112	Palma +34 971 495 413	Athens +30 210 967 1661
Dubai +971 4 425 5874	Phuket +66 7623 9739	Hong Kong +852 6496 2094	Tokyo +81 46 738 8612	Sydney +61 499 945 557	Mumbai +91 98211 67253	Shanghai +86 187 0898 6800	Rio de Janeiro +55 21 2553-3238

La publicité de ce(s) navire(s) dans des publications imprimées, sur Internet ou sur tout autre support n'est pas autorisée sans l'autorisation écrite préalable de Burgess.
Toutes les informations sont données de bonne foi et sont considérées comme exactes, mais elles ne peuvent être garanties.

Dernière mise à jour : 07 mai 2024