

# SEAFLOWER

---



SEAFLOWER

# SPECIFICATION.



Asking price  
EUR 22,500,000



Built  
2023, Mulder Shipyards, The Netherlands



Length  
36m (118.1ft)



Beam  
8m (26.2ft)



Draft  
2.1m (6.9ft)



Gross tonnage  
296



Cruising speed  
15 knots



Maximum speed  
16.8 knots



Flag  
Malta



Lying  
West Mediterranean



Class  
ABS A1 YACHTING, AMS, MCA+LY3



Exterior designer  
Claydon Reeves



Interior designer  
Vickers Studio



Construction  
Hull - Aluminium, Superstructure - Aluminium



Crew  
5



Guests  
10



Cabins  
5 (3 x double, 2 x double/twin)



Engines  
2 x 1,150hp Caterpillar



Propulsion  
Twin screw diesel yacht

[View yacht on website](#)



SEAFLOWER

Main deck aft



Main saloon



Main saloon lounge



Main saloon lounge



SEAFLOWER

Main saloon dining area



Master cabin



Master cabin



Master en suite bathroom



# SEAFLOWER

Sun deck



Sun deck



Stern view



Cruising



# SEAFLOWER

Cruising



# OVERVIEW.

The spectacular SEAFLOWER, hull six of the Mulder 36 series, has won the 2024 World Superyacht Award in the Semi-displacement or planning motor yachts 35-39.9m category. Acclaimed as 'truly impressive' by the judges, who noted the 'excellent value she presents for her size,' the 296GT SEAFLOWER is now offered for sale.

The 36m (118.1ft) yacht was constructed in aluminium to ABS classification and charter compliance by Mulder Shipyards and delivered to her very experienced owners, builders of many yachts, in 2023. Judges also applauded SEAFLOWER's 'tasteful custom interiors' by British Vickers Studio, along with exterior design by Claydon Reeves and the highly efficient Fast Displacement Hull Form (FDHF) technology by Van Oossanen Naval Architects.

Exterior guest spaces include a split-level sun deck with a bar and buffet serving a versatile space aft and a lounge and dining area for 10 guests beneath the hardtop.

There is a second open-air dining option on the main deck aft, and steps lead down to the beach club with dayhead and fold-down transom swim platform.

Sidedecks lead to steps up to a foredeck sun lounge with huge sunpad and an intimate lounge in the bow.

Inside on the main deck, a stylishly contemporary light-oak interior is illuminated with natural light through full-height windows.

There is a relaxing lounge area aft and a formal dining space forward. To starboard, sliding glass doors open onto a fold-down balcony to open up the space.

SEAFLOWER welcomes 10 guests in five cabins. The full-beam owner's suite, forward on the main deck, gets natural light through a huge skylight above the berth. There is sofa seating to port, en suite with shower room and a combined office and dressing room.

On the lower deck, highly versatile accommodation includes two double cabins and two convertible cabins, all en suite.

SEAFLOWER is the first Mulder 36 with IMO Tier III-compliant propulsion with twin 1,150hp Caterpillar diesel engines giving her a top speed of 18 knots, a cruising speed of 15 knots and a transatlantic range of 3,400nm at her passage speed of 10 knots. CMC zero speed stabilisers ensure guest comfort on arrival and a lower deck shell door to port opens to launch her 6.3m (20.7ft) Williams 625 DieselJet tender and two SeaDoos.

## Key features

---

**Winner at World Superyacht Awards 2024**

---

**Customised for a highly experienced multiple-yacht owner**

---

**Excellent opportunity to own a newly built yacht**

---

**First Mulder 36m built to IMO Tier III emissions standards**

---

**Transatlantic range from super-efficient hull burning 100 litres/hour at 10kn**

---

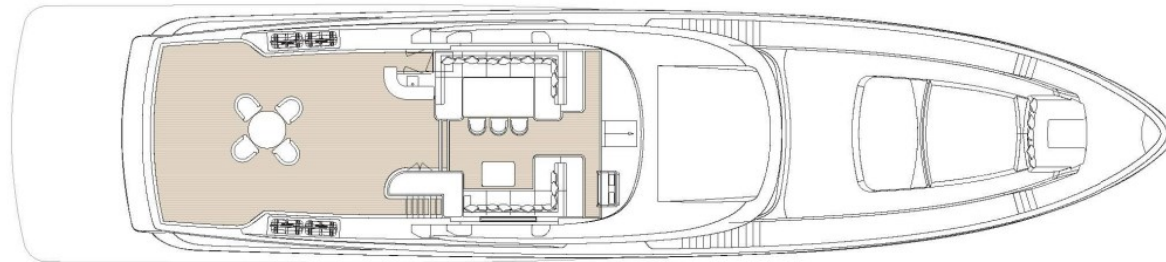
**Large tender for a 36m yacht at 6.3m**

---

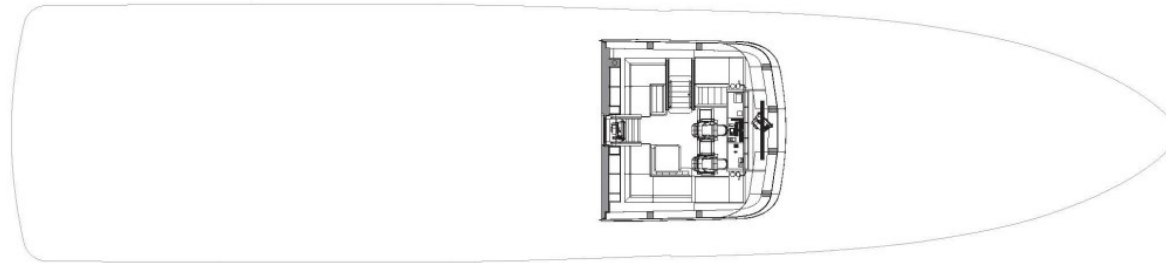
## Tenders

---

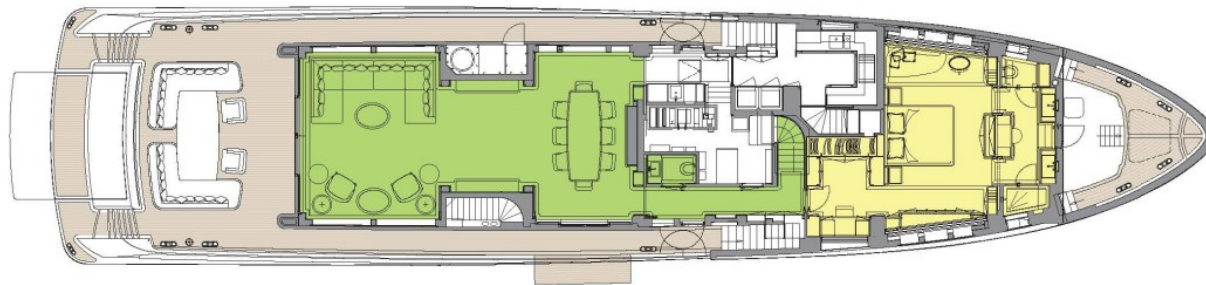
6.3m (20.7ft) Williams 625 DieselJet tender



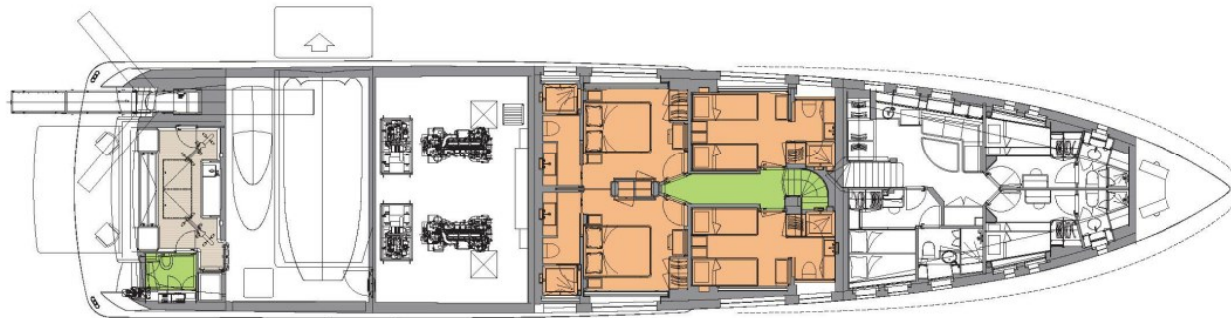
SUN DECK



WHEELHOUSE DECK



MAIN DECK



LOWER DECK

■ GUEST AREAS ■ MASTER SUITE ■ GUEST CABINS



BURGESS

WORLD CLASS.  
WORLD WIDE.

London +44 20 7766 4300	Monaco +377 97 97 81 21	New York +1 212 223 0410	Miami +1 305 672 0150	Singapore +65 9665 8990	Beverly Hills +1 310 424 5112	Palma +34 971 495 413	Athens +30 210 967 1661
Dubai +971 4 425 5874	Phuket +66 7623 9739	Hong Kong +852 6496 2094	Tokyo +81 46 738 8612	Sydney +61 499 945 557	Mumbai +91 98211 67253	Shanghai +86 187 0898 6800	Rio de Janeiro +55 21 2553-3238

---

Advertising of these vessel(s) in printed publications, on the internet or in any other medium is not permitted without prior written permission from Burgess. All particulars are given in good faith and are believed correct but they cannot be guaranteed.

Last updated: 07 May 2024