

# SEA EAGLE

---



# OVERVIEW.

**SEA EAGLE is a game-changing sailing yacht, a quite remarkable feat of design and engineering. With head-turning good looks, outstanding comfort and unbeatable performance, even in light winds, she possesses a unique attraction. She will also appeal to those who appreciate bold achievements as she is one of the 10 largest sailing yachts ever built. She is all about the superlative.**

As well as being an aesthetically alluring yacht, one with real presence on the water, this is a yacht that regularly sails at double-digit speeds and takes a matter of minutes to go from anchored to sailing. She can harness the natural power of the wind and convert it into a blistering 22 knots, her vertical bow slicing through the waves with barely a whisper. SEA EAGLE is a yacht that places you at one with nature.

The sheer exhilaration of sailing at this speed cannot be overstated. There is a feeling of being connected to a natural force. This pace also makes it easy for her to relocate quickly, allowing you to sail where you want without sacrificing valuable time. When the day is calm, the yacht's two large engines keep the itinerary on track.

Despite her ocean-taming pace and beguiling good looks, SEA EAGLE is very comfortable underway, ensuring utmost comfort when moving around on board in any conditions. Her highly experienced crew are available to help with your every need.

At anchor her vast deck spaces transform into a playground of possibilities. See the sun set with a cocktail on the flybridge as the chef prepares an informal dinner on the BBQ. Watch a movie on a huge screen in the main deck's outdoor cinema or climb into the eagle's nest that rises up the main mast to enjoy thrilling bird's-eye views of your anchorage.

Enjoy a pre-dinner drink at the inside-outside bar on the main deck aft or take lunch in the open-air dining table shaded by the overhang before stretching out on the expansive aft deck. For special occasions there's a formal dining room and lounge with wraparound views.

If you want to venture ashore to explore, she has a midships boarding platform that can be used in any conditions. Otherwise access to the water is via the folding swim platform aft, where the crew is ready to help you enjoy a vast range of watertoys, from waverunners to e-foils, SeaBobs to sailing dinghies, scuba diving kit to kayaks and SUPs.

When it's time for bed, she has extremely versatile accommodation on the lower deck with two master suites, three twin suites and a gym that can convert into a children's cabin, a nanny's cabin with cot, or a staff cabin.

If your guests are seeking to understand the epic power of nature, appreciate the wonder of the ocean and revel in a seven-star retreat, no other sailing yacht delivers like SEA EAGLE. All this while enjoying a wonderful holiday afloat with a crew that everyone loves. Book your unforgettable charter today.

## Key features

**'Best Sail above 500GT' Award and 'Best Refit' Award at the 'International Superyacht Society Awards of Distinction' gala**

**Recently refitted**

**Spa facilities: convertible massage room**

**Two master cabins**

**Flexible cabin configurations**

**Convertible gym**

**Two RIB chase tenders**

**Outdoor cinema screen**

**Masseuse/Personal trainer/Yoga instructor on board**



# SEA EAGLE

Welcome onboard



## Flybridge



## Versatile flybridge



## Flybridge





SEA EAGLE

Aft deck lounging



Aft deck outdoor dining



Forward deck sun pads



Outdoor cinema on aft deck





# SEA EAGLE

Unique dinner experience



Romantic dinner on the water



Access to swim platform



Swim platform





# SEA EAGLE

Aft lounge



Aft lounge bar



Forward lounge



Outstanding service onboard SEA EAGLE





# SEA EAGLE

Forward lounge and dining



Lower deck master cabin



Guest bathroom en suite



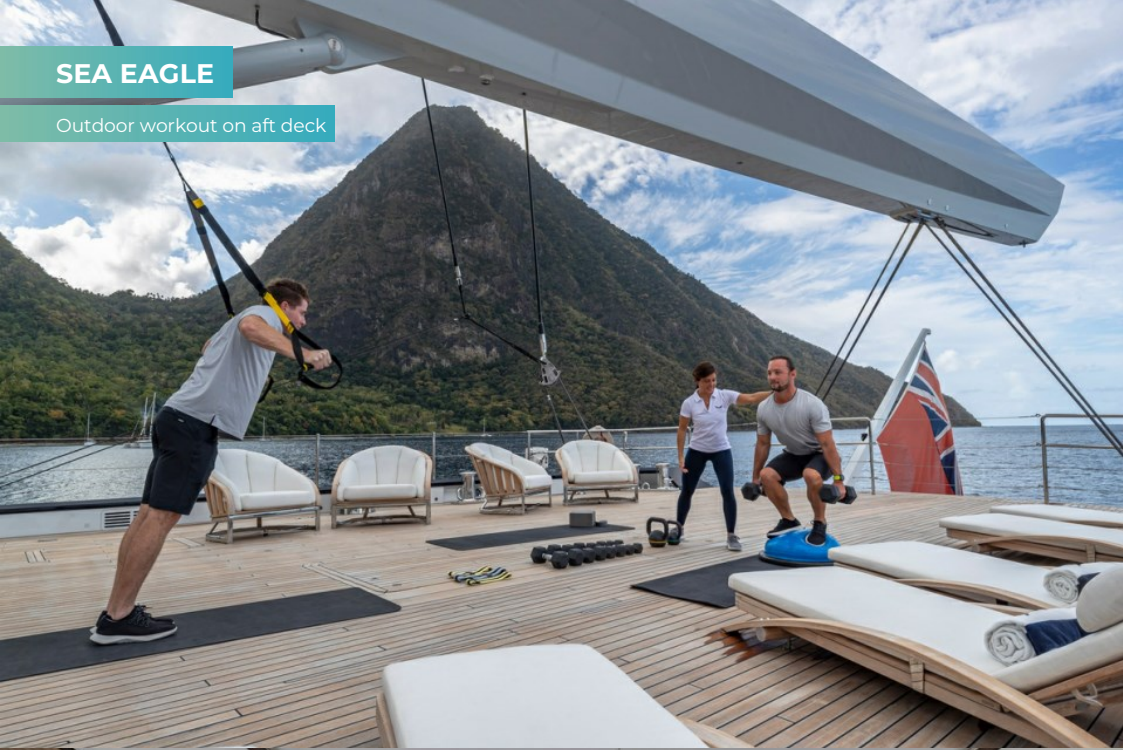
Lower deck twin cabin





## SEA EAGLE

Outdoor workout on aft deck



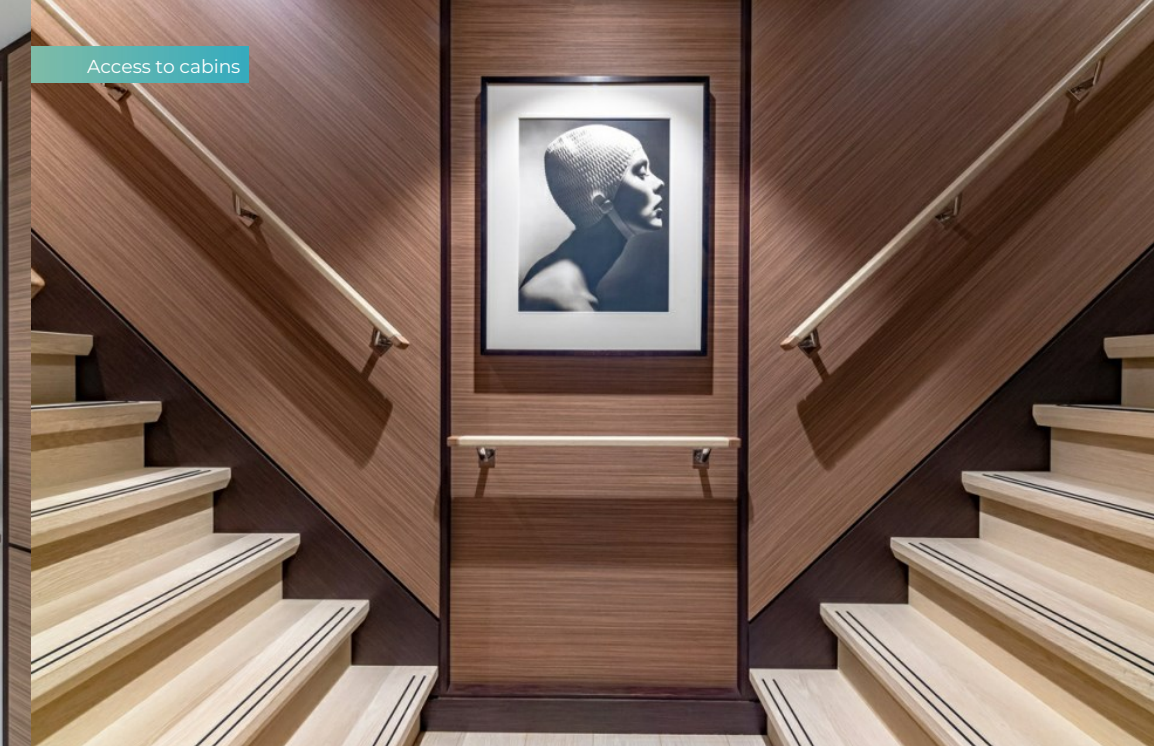
Tenders and toys



Gym/massage room



Access to cabins





# SEA EAGLE

Sailing



Massage room/gym



SEA EAGLE sailing around the World



Outstanding service onboard SEA EAGLE





## SEA EAGLE

SEA EAGLE in Scotland



Cosy lunch in Scotland



SEA EAGLE in Norway



Scandinavian times on board SEA EAGLE





# SEA EAGLE

SEA EAGLE in Norway



SEA EAGLE in St Lucia



SEA EAGLE in French Polynesia



Night at anchor





SEA EAGLE

# SPECIFICATION.



Length  
**81m (265.8ft)**



Built  
**2020 (refitted 2022), Royal Huisman Shipyard,  
The Netherlands**



Interior designer  
**Mark Whiteley Design**



Beam  
**12.3m (40.3ft)**



Draft min/max  
**6m (19.7ft)/6m (19.7ft)**



Displacement  
**1,104 tonnes**



Cruising speed  
**12 knots**



Maximum speed  
**22 knots**



Fuel consumption at cruising speed  
**200 litres per hour**



Engines  
**2 x 1,450hp Caterpillar**



Guests  
**12**



No. of guest cabins  
**6 (3 x double, 1 x double/twin, 2 x twin)**



Crew  
**15**

[View yacht on website](#)

[Watch yacht video](#)





# TENDERS & TOYS



3 × Tenders



2 × Sailing dinghies



1 × Waverunner



2 × SeaBobs



1 × eFoil



8 × Kayaks



2 × Stand up paddleboards



Windsurfer



Surfboard



Wakeboard



Kite surfing equipment



Inflatable platform



Inflatable tows



Dive centre



Scuba diving equipment



Snorkelling gear



Fishing gear

RYA training centre for jetskis  
& waverunners

8m RIB-X D Tube Yanmar 6CYL 260HP Inboard Diesel propeller - for watersports use - with awnings, 5m RIB-X SOLAS Med Yanmar 150HP Inboard Diesel Jetdrive, 2 x Jet ski Sea Doo 90Hp engine - 2seaters each, Wake board JOBE, 4 x Stand Up Paddle Boards ( 2xJOBE 10.6ft, 2xFanatics 11.6ft long), 2 x Kayaks Nomad (1 pax each), 2 x Sea Bob F5S 5HP engine, Inflatable JOBE Airstream Funtube (4 pax), 2 x Nautibuoy teak platforms for transom, 6 x Dive gear Aqua Lung (Rendez Vous only), 15 x Snorkels and fins Aqua Lung Various sizes , eFoil Flightboard, Electric surfboard A-Wake, 2 x RS Neos Dinghys (1 or 2 pax), Kitesurf (2 kites), Windsurf, 2 x Professional fishing chairs with fishing gear



# FITNESS & WELLNESS



Exercise balls



Free weights



Kinesis machine



Multi gym



Personal trainer



Resistance bands



Resistance trainer



Rowing machine



Training bench



Yoga instructor



Yoga mats



Massage room



On board masseuse

Technogym wall kinesis, Technogym bench with weights - new from November 2022, Kettle bells, TRXs, Rowing machine, Yoga mats, Resistance bands, 2 x E-Bikes Specialized Mountain bikes



SEA EAGLE

# COMMUNICATION & ENTERTAINMENT



Starlink



Outdoor cinema



Speaker systems

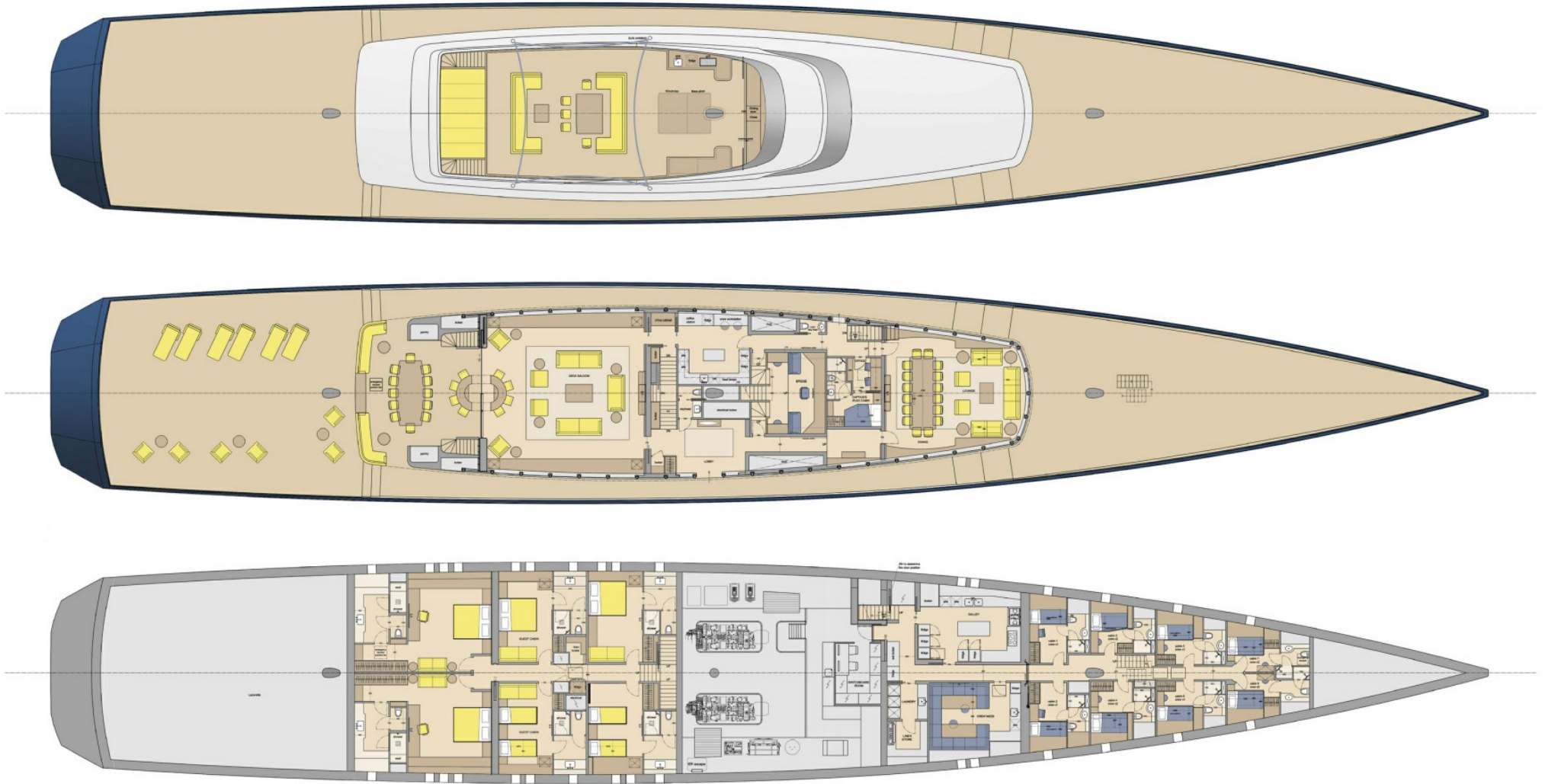
State-of-the-art audio visual equipment with movies and music on demand, outdoor cinema set up, Starlink internet Convertible cabin into a gym, outdoor gym equipment, convertible cabin into a massage room





# SEA EAGLE

Deck plans





# BURGESS

# WORLD CLASS. WORLD WIDE.

<b>London</b> +44 20 7766 4300	<b>Monaco</b> +377 97 97 81 21	<b>New York</b> +1 212 223 0410	<b>Miami</b> +1 305 672 0150	<b>Singapore</b> +65 9665 8990	<b>Beverly Hills</b> +1 310 424 5112	<b>Palma</b> +34 971 495 413	<b>Athens</b> +30 210 967 1661
<b>Dubai</b> +971 4 425 5874	<b>Phuket</b> +66 7623 9739	<b>Hong Kong</b> +852 6496 2094	<b>Tokyo</b> +81 46 738 8612	<b>Sydney</b> +61 499 945 557	<b>Mumbai</b> +91 98211 67253	<b>Shanghai</b> +86 187 0898 6800	<b>Rio de Janeiro</b> +55 21 2553-3238
<b>Aspen</b> +1 970 710 2294							

Advertising of these vessel(s) in printed publications, on the internet or in any other medium is not permitted without prior written permission from Burgess. All particulars are given in good faith and are believed correct but they cannot be guaranteed.

Last updated: 11 March 2025