

# SCINTILLA MARIS





SCINTILLA MARIS

# SPÉCIFICATIONS.



Prix demandé  
EUR 19 250 000



Chantier  
1988 (rebuilt 2023), Damen Maaskant, The Netherlands



Longueur  
45,6m



Largeur  
9m



Tirant d'eau  
5,1m



Tonnage brut  
499



Vitesse de croisière  
9 knots



Vitesse maximale  
12 knots



Autonomie  
9 000 nm



Pavillon  
Marshall Islands



Position  
Europe



Classe  
IMO Tier III, C • HULL • MACH Ych, Unrestricted Navigation, AUT-UMS (Y), GREEN PLUS (Y)



Designer extérieur  
Damen



Designer d'intérieur  
Vripack



Construction  
Hull - Steel, Superstructure - Aluminium, Deck - Iroko 40mm



Équipage  
7



Invités  
12



Cabines  
6 (3 x double, 3 x twin)

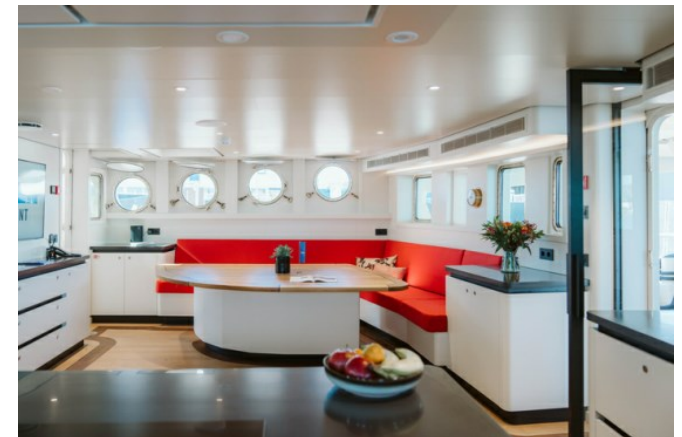


Moteurs  
1 x 2 000hp Marelli



Propulsion  
Hybrid

[Voir le yacht sur le site](#)



# SCINTILLA MARIS

Main deck open galley



Main deck open galley



Main deck open galley



Main deck open galley





# SCINTILLA MARIS

Main deck open galley



Main deck lounge



Main deck lounge



Main deck lounge





# SCINTILLA MARIS

Main deck lounge



Main deck lounge



Main deck lounge



Main deck foyer





SCINTILLA MARIS

Master cabin



Master cabin



Master cabin



Master cabin





# SCINTILLA MARIS

Master cabin en suite



Master cabin en suite



Master cabin en suite



Guest cabin



# SCINTILLA MARIS

Guest cabin



Guest cabin en suite



Guest cabin



Guest cabin en suite





# SCINTILLA MARIS

Bridge deck lounge



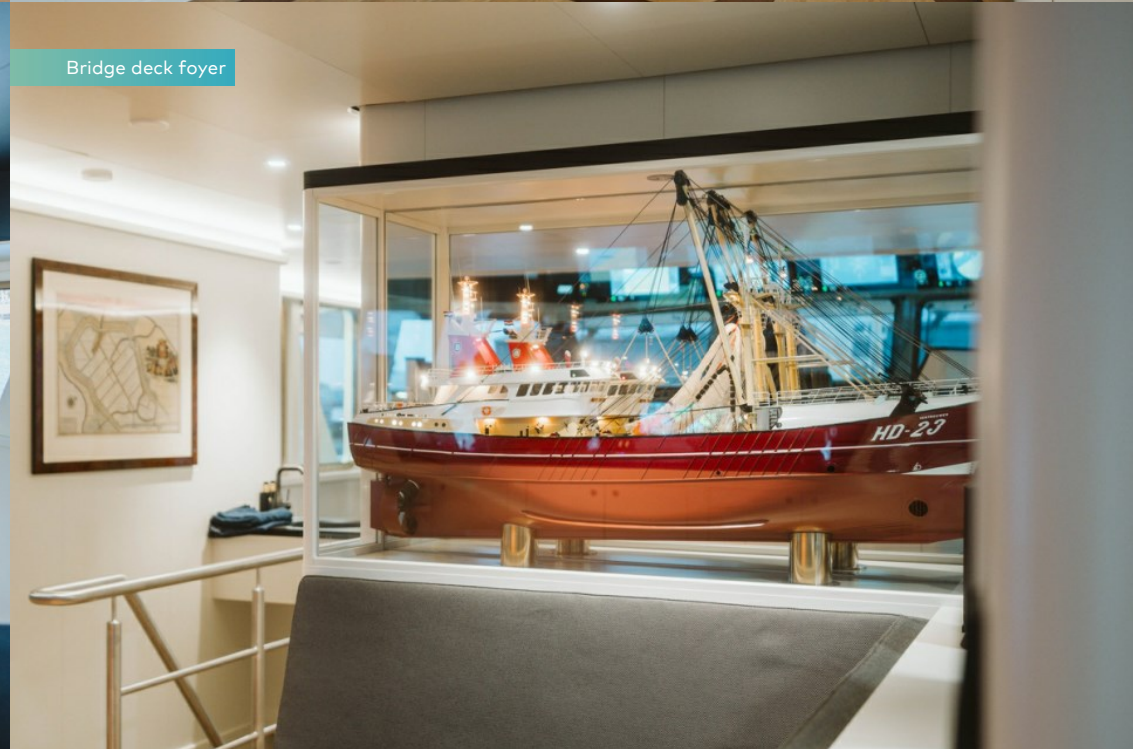
Bridge deck lounge



Bridge



Bridge deck foyer





# SCINTILLA MARIS

Main deck



Main deck



Main deck



Main deck





# SCINTILLA MARIS

Sun deck



Sun deck



Sun deck



Main deck forward





SCINTILLA MARIS



BURGESS

Discover the difference.  
burgessyachts.com





SCINTILLA MARIS

# APERÇU.

Originally delivered in 1988 by the Dutch shipyard Maaskant, SCINTILLA MARIS is a 45.6m (149.6ft) full-custom rebuilt expedition yacht with a thickened steel hull built to RINA classification. During an extensive four year rebuild at Damen Maaskant, SCINTILLA MARIS was stripped down to bare steel, fully modernised and rebuilt in the owner's vision. Maintaining her original exterior lines shows off her heritage, while a step into the interior and technical spaces reveals a fully modernised expedition yacht capable of extensive autonomous cruising with a 9,000nm range at nine knots.

Naval architecture and exterior design is by Damen Maaskant, with the new interior designed by Dutch studio Vripack. SCINTILLA MARIS was conceived and optimised for long distance ocean-going performance. Her newly designed hybrid-electric propulsion and harbour generator were installed to comply with Tier-III regulations, reduce the yacht's footprint and minimise noise and vibration.

SCINTILLA MARIS delivers incredible views from her sun deck. Underneath the protective hardtop, there is an al fresco dining area complete with BBQ station and full-service bar. On the bridge deck there is a heated Portuguese bridge in front of the wheelhouse with a thermostatic seating area that uses heat recovered from the generators, and aft there are teak-laid banquettes facing fore and aft. Midships on the main deck the hull plating was reconfigured to provide direct access to the water on both port and starboard sides, giving guests an intimate connection with the ocean and ease of access to and from the water.

Inside the bridge deck is an intimate lounge with U-shaped seating and direct access to the helm station. The completely reconfigured bridge has been fully modernised and serves as both a highly technical operating space and a comfortable place for guest observation during long cruises.

The main deck has a welcoming open galley, concepted as a relaxed gathering space for meals and post-exploration lounging. Forward the main deck lounge is a warm and welcoming seating area for guests with forward views.

She welcomes 10 guests in five cabins as well as nine crew. All cabins are located on the lower deck, with four guest cabins forward. Aft is a massive full-beam owner's cabin aft featuring huge ceiling heights and large skylights, bringing ample natural light into her warm interior.

## Principales caractéristiques

---

Like new condition after extensive 2023 rebuild

---

Impressive 9,000nm range

---

Main deck open galley outfitted with state-of-the-art appliances

---

Thickened steel hull and shape provides comfortable cruising in any seas

---

30 main deck skylights provide significant daylight to lower deck

---

Modernised IMO Tier III-compliant propulsion system provides four different sailing modes including hybrid and full battery

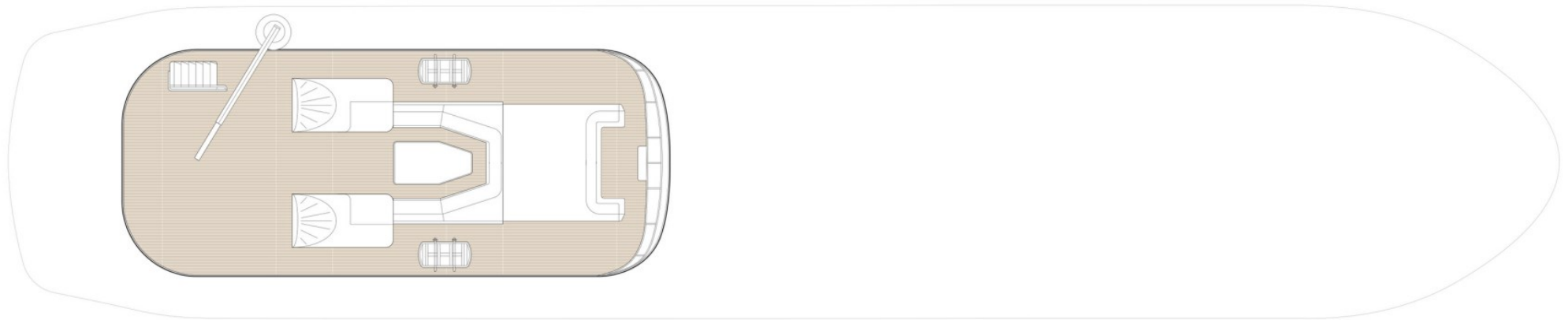
---

Highly modernised wheelhouse and bridge controls

---



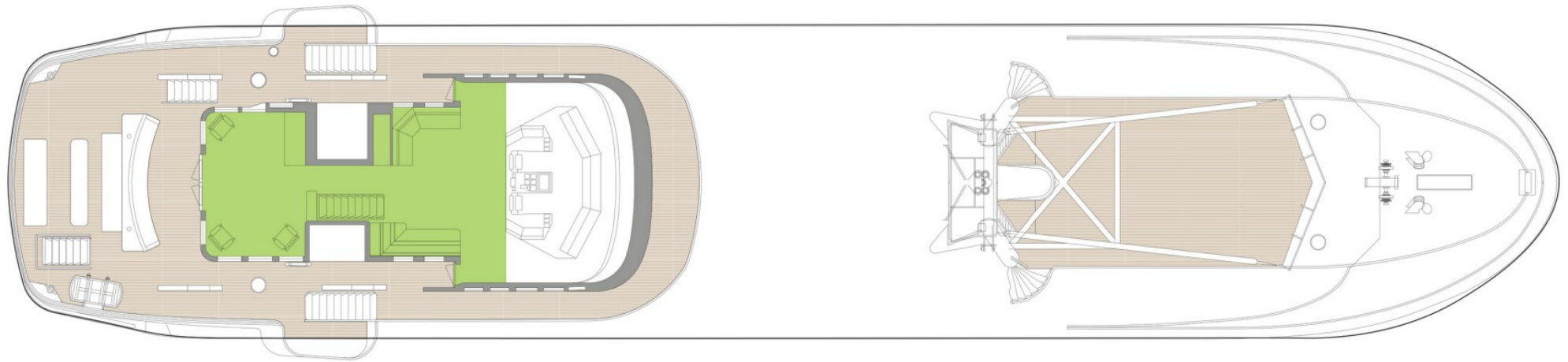
# SUN DECK



■ GUEST AREAS   ■ MASTER SUITE   ■ GUEST CABINS



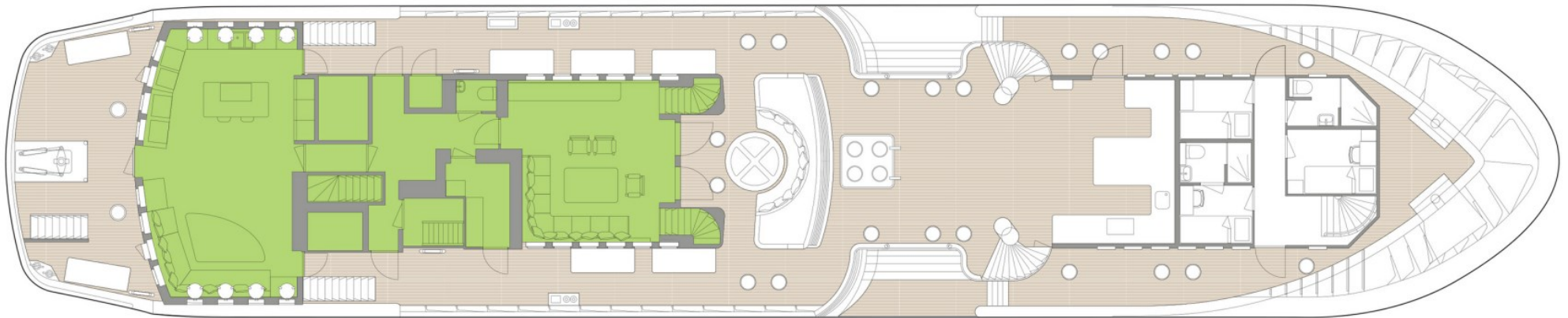
# BRIDGE DECK



■ GUEST AREAS   ■ MASTER SUITE   ■ GUEST CABINS



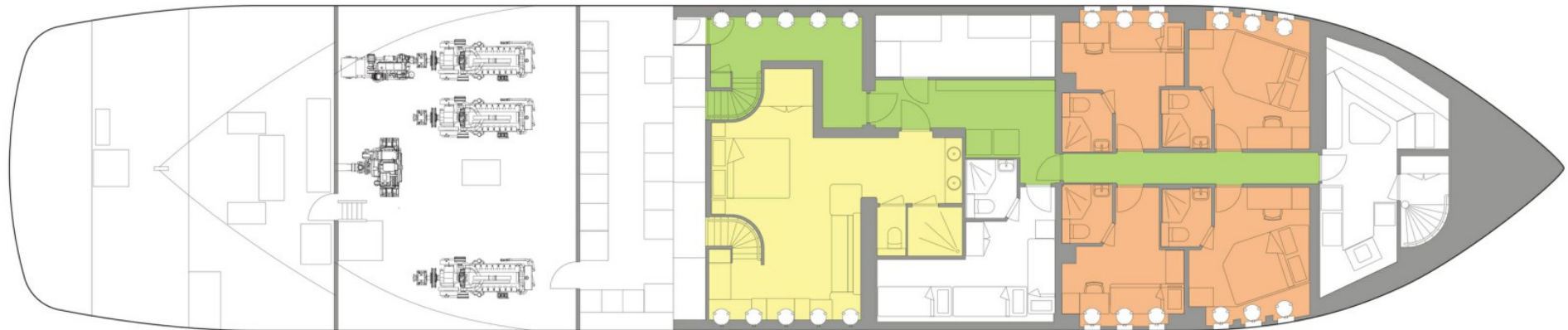
# MAIN DECK



■ GUEST AREAS   ■ MASTER SUITE   ■ GUEST CABINS



# LOWER DECK



 GUEST AREAS  MASTER SUITE  GUEST CABINS



BURGESS

WORLD CLASS.  
WORLD WIDE.

London +44 20 7766 4300	Monaco +377 97 97 81 21	New York +1 212 223 0410	Miami +1 305 672 0150	Singapore +65 9665 8990	Beverly Hills +1 310 424 5112	Palma +34 971 495 413	Athens +30 210 967 1661
Dubai +971 4 425 5874	Phuket +66 7623 9739	Hong Kong +852 6496 2094	Tokyo +81 46 738 8612	Sydney +61 499 945 557	Mumbai +91 98211 67253	Shanghai +86 187 0898 6800	

La publicité de ce(s) navire(s) dans des publications imprimées, sur Internet ou sur tout autre support n'est pas autorisée sans l'autorisation écrite préalable de Burgess.  
Toutes les informations sont données de bonne foi et sont considérées comme exactes, mais elles ne peuvent être garanties.

Dernière mise à jour : 29 avril 2024