

SCINTILLA MARIS



SCINTILLA MARIS

SPECIFICATION.



Asking price
EUR 19,250,000



Built
1988 (rebuilt 2023), Damen Maaskant, The Netherlands



Length
45.6m (149.6ft)



Beam
9m (29.5ft)



Draft
5.1m (16.7ft)



Gross tonnage
499



Cruising speed
9 knots



Maximum speed
12 knots



Range
9,000 nm



Flag
Marshall Islands



Lying
Europe



Class
IMO Tier III, C • HULL • MACH Ych, Unrestricted Navigation, AUT-UMS (Y), GREEN PLUS (Y)



Exterior designer
Damen



Interior designer
Vripack



Construction
Hull - Steel, Superstructure - Aluminium, Deck - Iroko 40mm



Crew
7



Guests
12



Cabins
6 (3 x double, 3 x twin)



Engines
1 x 2,000hp Marelli



Propulsion
Hybrid

[View yacht on website](#)



SCINTILLA MARIS

Main deck open galley



Main deck open galley



Main deck open galley



Main deck open galley



SCINTILLA MARIS

Main deck open galley



Main deck lounge



Main deck lounge



Main deck lounge



SCINTILLA MARIS

Main deck lounge



Main deck lounge



Main deck lounge



Main deck foyer



SCINTILLA MARIS

Master cabin



Master cabin



Master cabin



Master cabin



SCINTILLA MARIS

Master cabin en suite



Master cabin en suite



Master cabin en suite



Guest cabin



SCINTILLA MARIS

Guest cabin



Guest cabin en suite



Guest cabin



Guest cabin en suite



SCINTILLA MARIS

Bridge deck lounge



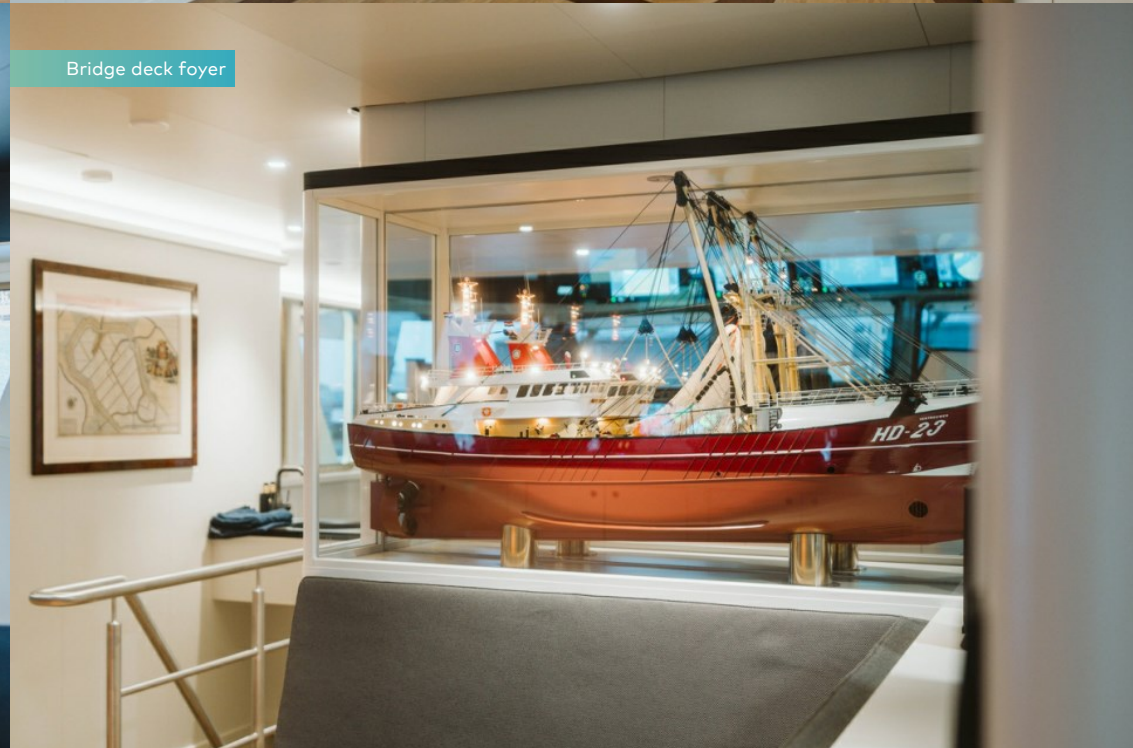
Bridge deck lounge



Bridge



Bridge deck foyer



SCINTILLA MARIS

Main deck



Main deck



Main deck



Main deck



SCINTILLA MARIS

Sun deck



Sun deck



Sun deck



Main deck forward



SCINTILLA MARIS



BURGESS

Discover the difference.
burgessyachts.com



OVERVIEW.

Originally delivered in 1988 by the Dutch shipyard Maaskant, SCINTILLA MARIS is a 45.6m (149.6ft) full-custom rebuilt expedition yacht with a thickened steel hull built to RINA classification. During an extensive four year rebuild at Damen Maaskant, SCINTILLA MARIS was stripped down to bare steel, fully modernised and rebuilt in the owner's vision. Maintaining her original exterior lines shows off her heritage, while a step into the interior and technical spaces reveals a fully modernised expedition yacht capable of extensive autonomous cruising with a 9,000nm range at nine knots.

Naval architecture and exterior design is by Damen Maaskant, with the new interior designed by Dutch studio Vripack. SCINTILLA MARIS was conceived and optimised for long distance ocean-going performance. Her newly designed hybrid-electric propulsion and harbour generator were installed to comply with Tier-III regulations, reduce the yacht's footprint and minimise noise and vibration.

SCINTILLA MARIS delivers incredible views from her sun deck. Underneath the protective hardtop, there is an al fresco dining area complete with BBQ station and full-service bar. On the bridge deck there is a heated Portuguese bridge in front of the wheelhouse with a thermostatic seating area that uses heat recovered from the generators, and aft there are teak-laid banquettes facing fore and aft. Midships on the main deck the hull plating was reconfigured to provide direct access to the water on both port and starboard sides, giving guests an intimate connection with the ocean and ease of access to and from the water.

Inside the bridge deck is an intimate lounge with U-shaped seating and direct access to the helm station. The completely reconfigured bridge has been fully modernised and serves as both a highly technical operating space and a comfortable place for guest observation during long cruises.

The main deck has a welcoming open galley, concepted as a relaxed gathering space for meals and post-exploration lounging. Forward the main deck lounge is a warm and welcoming seating area for guests with forward views.

She welcomes 10 guests in five cabins as well as nine crew. All cabins are located on the lower deck, with four guest cabins forward. Aft is a massive full-beam owner's cabin aft featuring huge ceiling heights and large skylights, bringing ample natural light into her warm interior.

Key features

Like new condition after extensive 2023 rebuild

Impressive 9,000nm range

Main deck open galley outfitted with state-of-the-art appliances

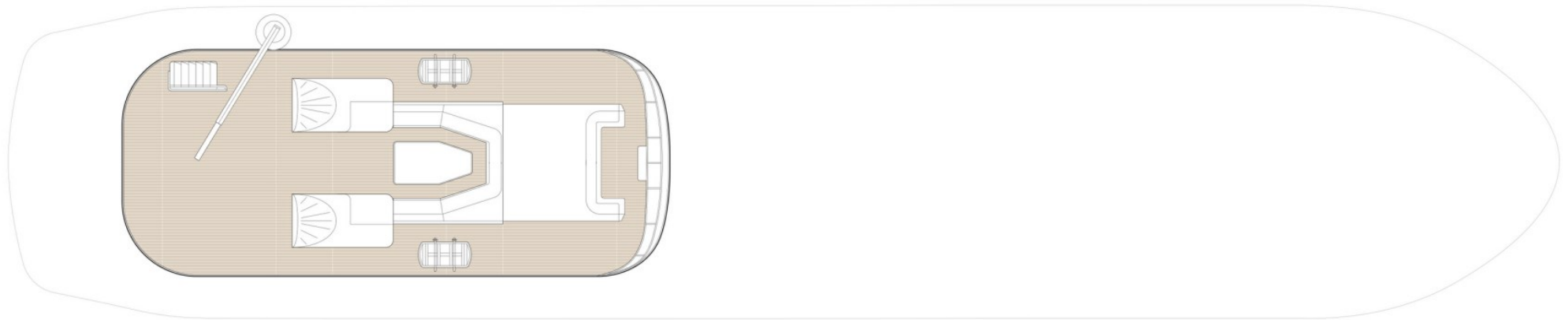
Thickened steel hull and shape provides comfortable cruising in any seas

30 main deck skylights provide significant daylight to lower deck

Modernised IMO Tier III-compliant propulsion system provides four different sailing modes including hybrid and full battery

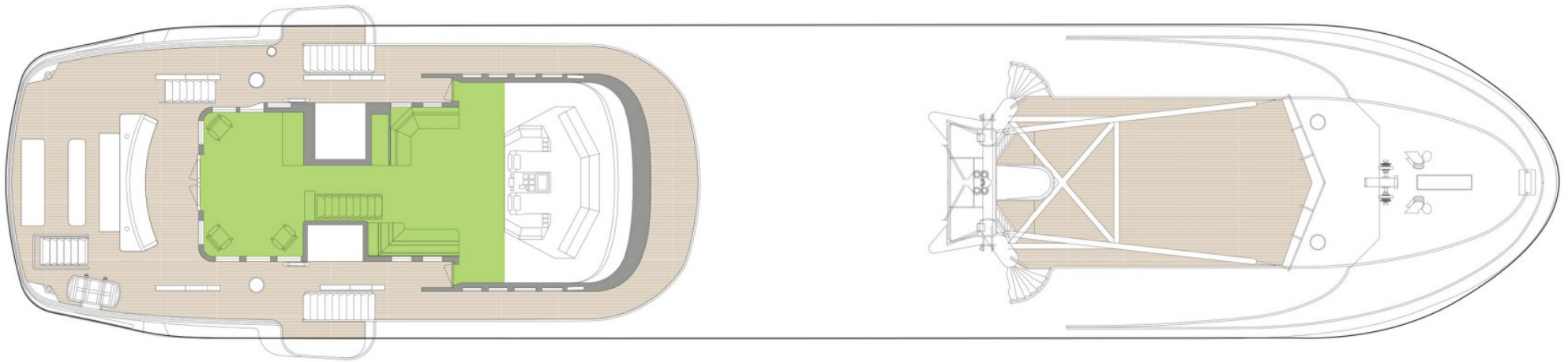
Highly modernised wheelhouse and bridge controls

SUN DECK



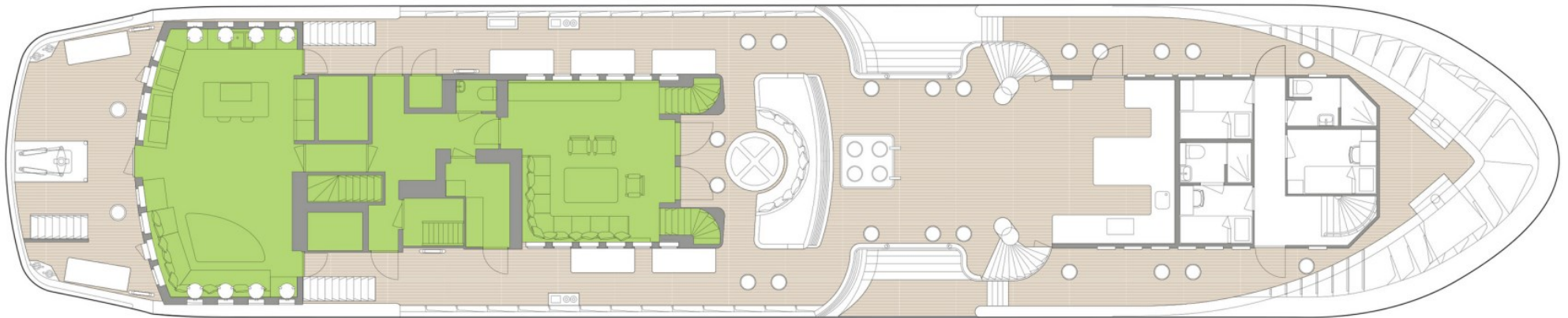
■ GUEST AREAS ■ MASTER SUITE ■ GUEST CABINS

BRIDGE DECK



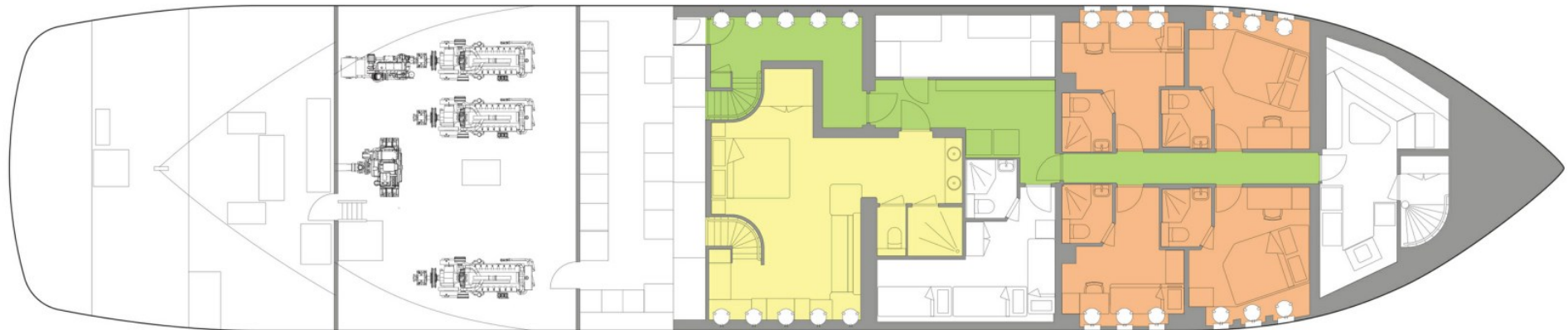
■ GUEST AREAS ■ MASTER SUITE ■ GUEST CABINS

MAIN DECK



■ GUEST AREAS ■ MASTER SUITE ■ GUEST CABINS

LOWER DECK



 GUEST AREAS  MASTER SUITE  GUEST CABINS

BURGESS

WORLD CLASS.
WORLD WIDE.

London	Monaco	New York	Miami	Singapore	Beverly Hills	Palma	Athens
+44 20 7766 4300	+377 97 97 81 21	+1 212 223 0410	+1 305 672 0150	+65 9665 8990	+1 310 424 5112	+34 971 495 413	+30 210 967 1661
Dubai	Phuket	Hong Kong	Tokyo	Sydney	Mumbai	Shanghai	
+971 4 425 5874	+66 7623 9739	+852 6496 2094	+81 46 738 8612	+61 499 945 557	+91 98211 67253	+86 187 0898 6800	

Advertising of these vessel(s) in printed publications, on the internet or in any other medium is not permitted without prior written permission from Burgess. All particulars are given in good faith and are believed correct but they cannot be guaranteed.

Last updated: 29 April 2024