

SAVANNAH



SAVANNAH

APERÇU.

Absolutely incomparable, SAVANNAH is the first hybrid megayacht delivered by the Dutch shipyard Feadship and has eco-credentials rarely found on such large yachts. Nothing on this yacht is anything other than cutting edge.

The 9m infinity pool is one of the most impressive on any yacht. Palatial full beam steps lead guests up to the main deck beach club where sun loungers surround the pool. A striking open plan main saloon has rosewood floors, curved seating areas and a video wall that separates the lounge from the formal dining area. During the day, the sun deck jacuzzi competes with the pool for those looking to take a dip, while come sunset the DJ station starts up and the sun deck becomes a party deck.

Guests can start their day with a workout in the air-conditioned gym on the bridge deck, complete with stunning views and a personal trainer. For early risers, the foredeck is the perfect place for a yoga session at sunrise with the crew's instructor. After an active day messing about with SAVANNAH's many watertoys, including the inflatable waterpark and upper deck waterslide, the dedicated wellness area with hammam and treatment room is the perfect place to unwind. Enjoy a treatment here from the masseuse and beauty therapist, or perhaps a blow dry with the hairdresser to get ready for dinner.

Whether you are looking for a relaxed, laid back evening surrounded by home comforts or a more formal celebration with all the trimmings, both the chefs and the yacht lend themselves to all occasions. Dine in the formal main saloon or spend the evening al fresco on one of her many aft decks, guests could dine at a different location every night of the week. There are also several quiet options for the evening ahead. Swim into the sunset in the infinity pool, cozy up with drinks in front of the fire, or retire to the spectacular Nemo lounge's stadium seating where marine life or a drop-down cinema screen provide the entertainment. The options on SAVANNAH really are endless.

The owner's deck area begins with a study which leads to the forward-facing master suite with panoramic views and a private deck area forward. Like much of the interior, the space is uncluttered while still managing to host everything you might need. Other guests in the charter party will not be disappointed with a choice of stunning suites located on the main deck, including a VIP suite with private balcony and four double cabins.

Principales caractéristiques

Motor Yacht of the Year at the 2016 World Superyacht Awards

Won three prestigious awards at the 2016 ShowBoats Design Awards

Spa facilities: hammam, massage room

Beach club at sea level

Private master deck

Balcony off the VIP cabin

Low fuel consumption

Fully equipped gym

Elevator serving tank to bridge decks

Pool on the main deck aft

Jacuzzi on the sun deck

Zero speed stabilisers to reduce any rolling motion while at anchor

SAVANNAH

Main deck aft pool



Main deck lounge



Owner's deck aft dining area

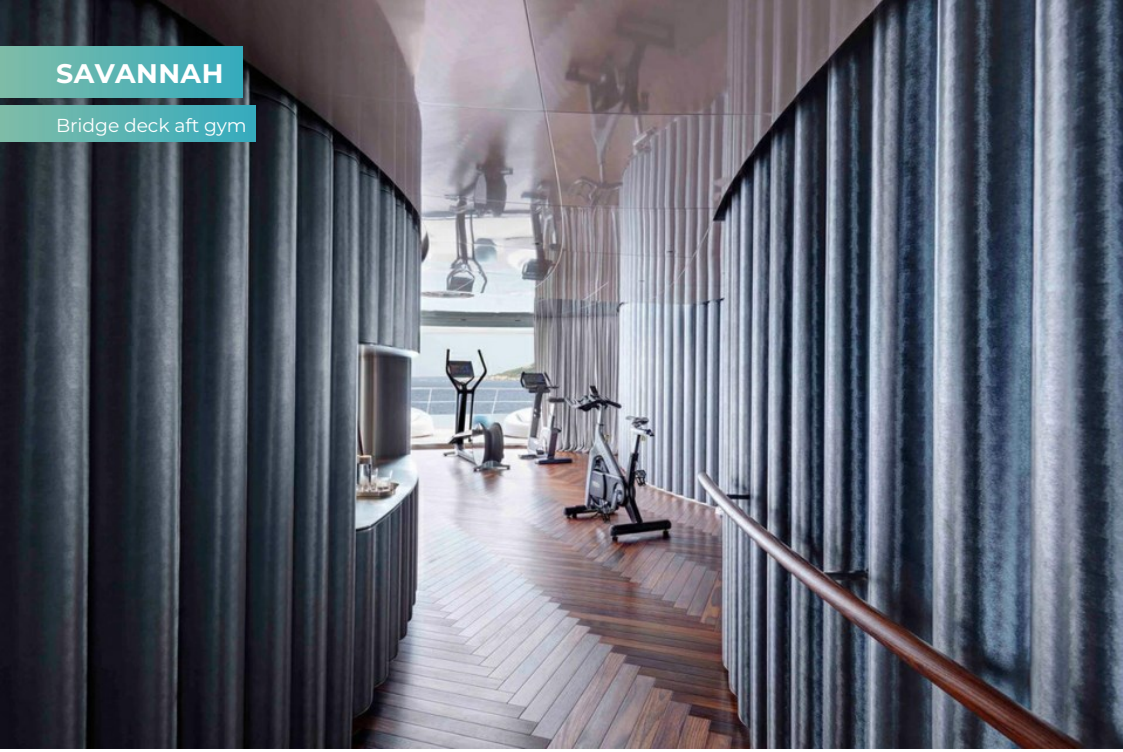


Owner's deck forward master suite



SAVANNAH

Bridge deck aft gym



SAVANNAH

SPECIFICATIONS.



Longueur
83,5m



Chantier
2015, Feadship, De Vries, The Netherlands



Designer d'intérieur
CG Design



Largeur
12,5m



Tirant d'eau
4m



Tonnage brut
2 305



Vitesse de croisière
14 knots



Vitesse maximale
17 knots



Consommation de carburant en vitesse de croisière
80 litres par heure



Moteurs
1 x 2 414hp Wartsila



Invités
12

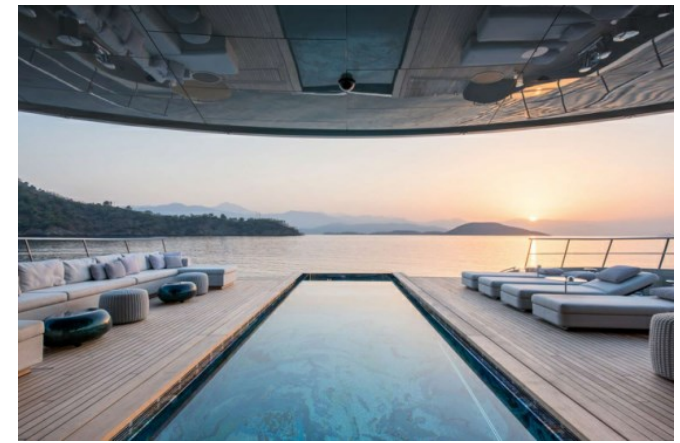


Nb de cabines invités
6 (4 x double, 2 x double/twin)



Équipage
24

[Voir le yacht sur le site](#)



SAVANNAH

ANNEXES & JEUX NAUTIQUES



1 x Limousine tender



1 x Tender



2 x Sailing dinghies



1 x Deck jacuzzi



Pool



3 x Waverunners



4 x SeaBobs



1 x eFoil



2 x Jetsurfs



3 x Kayaks



4 x Stand up paddleboards



Wakeboard



Waterskis



Waterslide



Inflatable toys



Dive centre



Scuba diving equipment



Snorkelling gear



RYA training centre for jetskis & waverunners

SAVANNAH

REMISE EN FORME & BIEN-ETRE



Balance trainer



Basketball court



Boxing equipment



Cross trainer



Exercise balls



Free weights



Jump ropes



Pedal bike



Personal trainer



Resistance bands



Rowing machine



Training bench



Treadmill



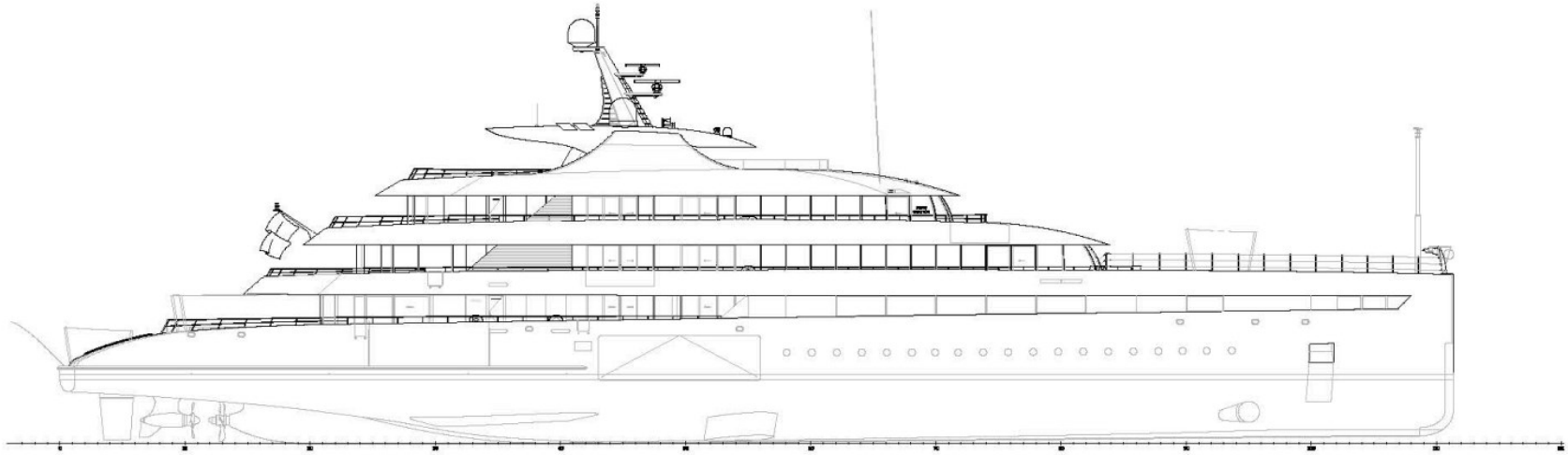
Upright stationary bike



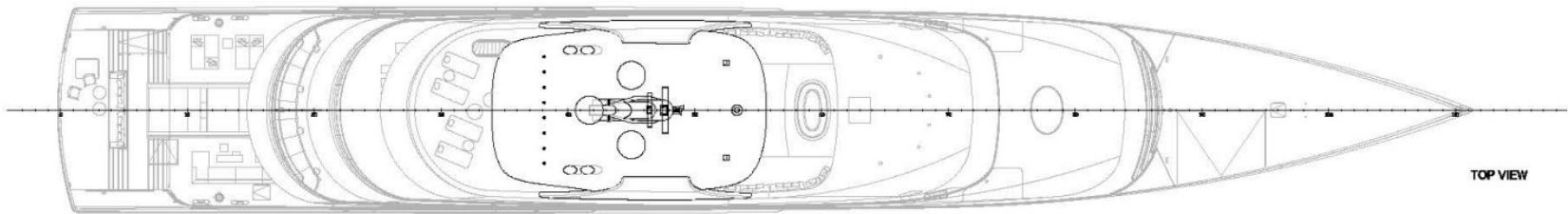
Yoga mats

SAVANNAH

Profile and top view



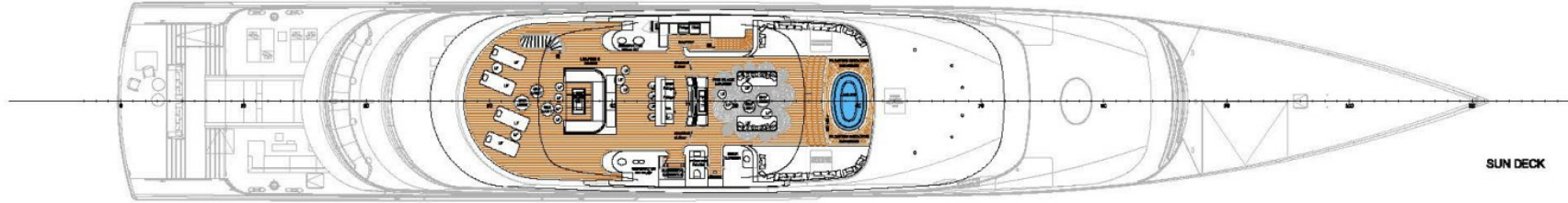
PROFILE



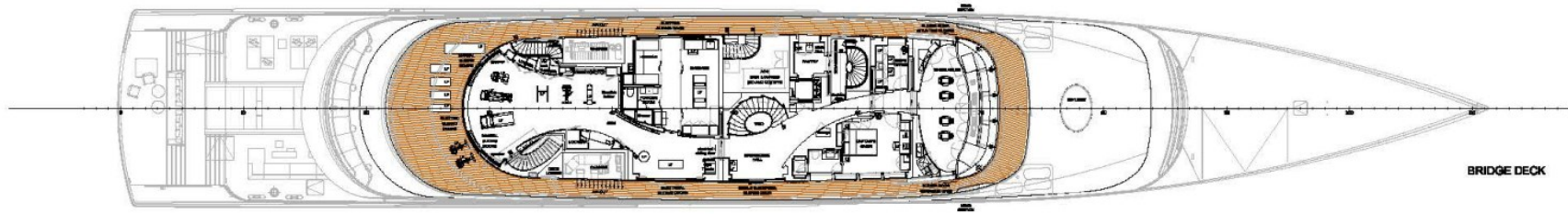
TOP VIEW

SAVANNAH

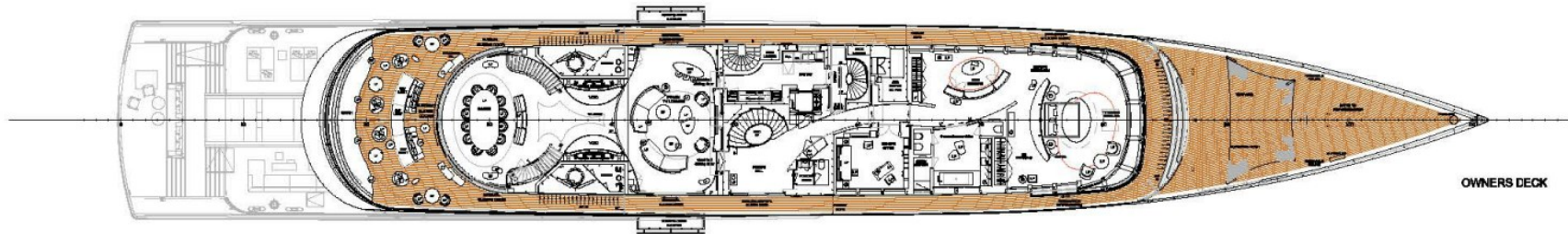
Sun, bridge and owner's decks



SUN DECK



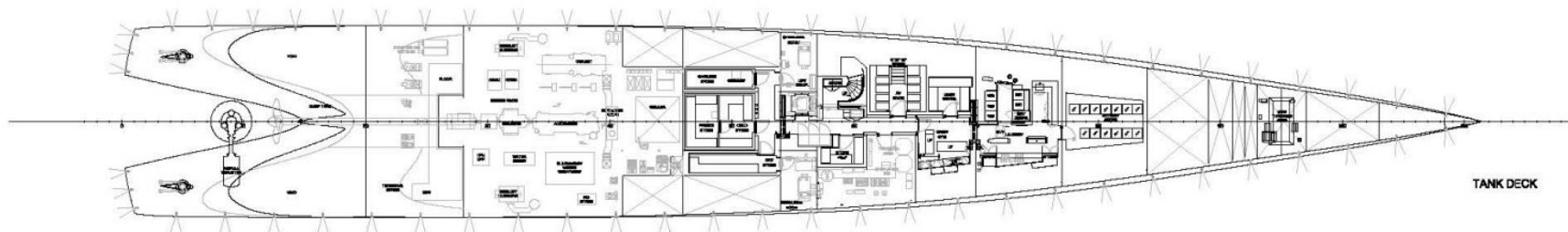
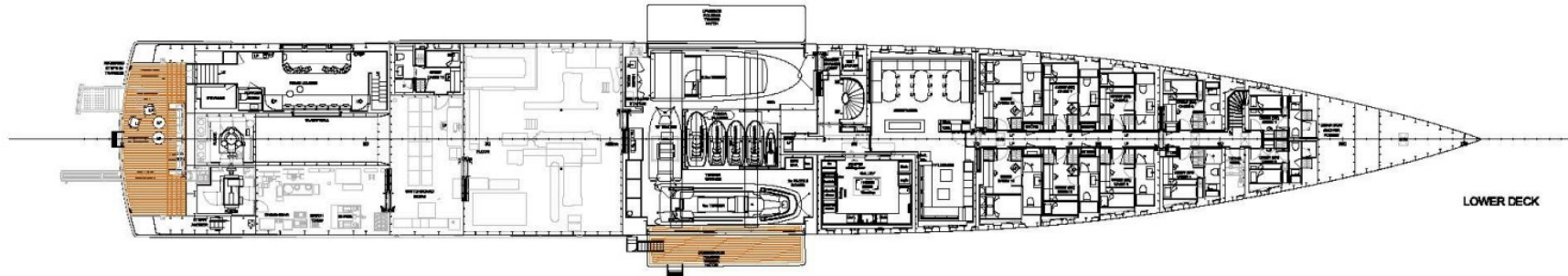
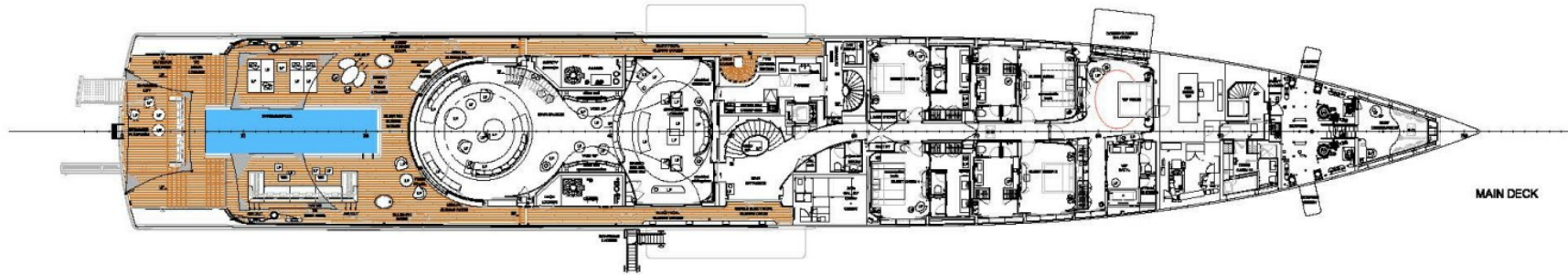
BRIDGE DECK



OWNERS DECK

SAVANNAH

Main, lower and tank decks



BURGESS

WORLD CLASS. WORLD WIDE.

London +44 20 7766 4300	Monaco +377 97 97 81 21	New York +1 212 223 0410	Miami +1 305 672 0150	Singapore +65 9665 8990	Beverly Hills +1 310 424 5112	Palma +34 971 495 413	Athens +30 210 967 1661
Dubai +971 4 425 5874	Phuket +66 7623 9739	Hong Kong +852 6496 2094	Tokyo +81 46 738 8612	Sydney +61 499 945 557	Mumbai +91 98211 67253	Shanghai +86 187 0898 6800	Rio de Janeiro +55 21 2553-3238
Aspen +1 970 710 2294							

La publicité de ce(s) navire(s) dans des publications imprimées, sur Internet ou sur tout autre support n'est pas autorisée sans l'autorisation écrite préalable de Burgess.
Toutes les informations sont données de bonne foi et sont considérées comme exactes, mais elles ne peuvent être garanties.

Dernière mise à jour : 11 mars 2025