

# SANAM

---





SANAM

# SPÉCIFICATIONS.



Prix demandé  
EUR 26 900 000 (EU VAT paid)



Chantier  
2016, Palmer Johnson, United States Of America



Longueur  
52,4m



Largeur  
9,1m



Tirant d'eau  
2m



Tonnage brut  
495



Vitesse de croisière  
17 knots



Vitesse maximale  
30 knots



Autonomie  
4 600 nm



Pavillon  
Malta



Position  
West Mediterranean



Classe  
Lloyds Register 100A1 SSC YACHT MONO HSC  
G6 LMC



Designer extérieur  
Nuvolari & Lenard



Designer d'intérieur  
Todhunter Earle



Construction  
Hull - Aluminium, Superstructure - Aluminium,  
Deck - Teak



Équipage  
10



Invités  
14



Cabines  
6 (4 x double, 2 x twin, 2 x additional berths)



Moteurs  
2 x 4 613hp MTU



Propulsion  
Twin screw diesel yacht

## Note

Not available for sale to US residents while in US waters.

[Voir le yacht sur le site](#)

[Regarder la vidéo du yacht](#)





SANAM

Cruising



Cruising



Cruising



Main deck lounge



BURGESS

Discover the difference.  
burgessyachts.com





# SANAM

Main deck lounge



Formal dining



Formal dining with fold out balcony



Master cabin





SANAM

Master cabin



Master cabin



Master en suite bathroom



Master en suite bathroom





SANAM

Guest double cabin with day bed



Day bed



Guest en suite bathroom



Guest double cabin





SANAM

Guest double cabin



Twin cabin with pullman



Guest en suite bathroom



Main deck aft





SANAM

Main deck aft



Forecastle deck pool



Pool



Pool at night





SANAM

Sun deck



Sun deck cinema



Sun deck jacuzzi



Jacuzzi at night





SANAM

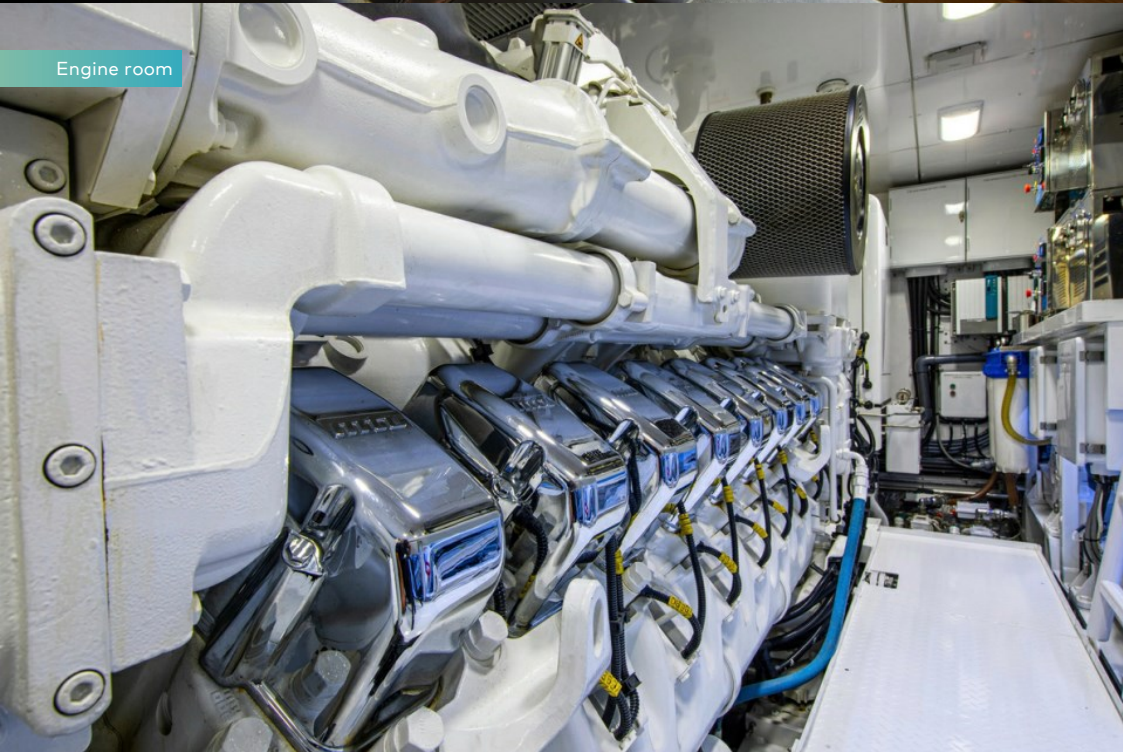
Bridge



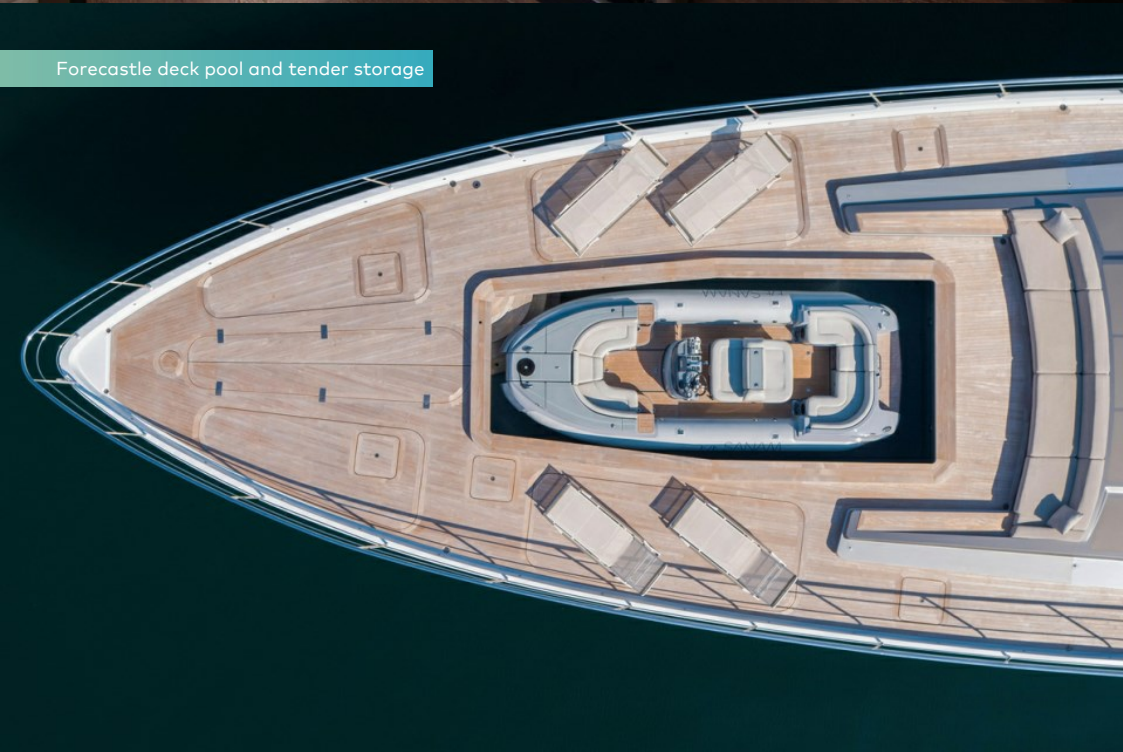
Galley



Engine room



Forecastle deck pool and tender storage



BURGESS

Discover the difference.  
burgessyachts.com





SANAM

Stern



Aerial view



BURGESS

Discover the difference.  
burgessyachts.com





SANAM

# APERÇU.

The newest of Palmer Johnson's admirable SportYacht 170 series, SANAM was delivered in 2016 and is now available for sale. Effortlessly blending performance with style and comfort this yacht measures 52.4m (171.9ft) in length with 495GT of opulent interior living space. Only used privately by one owner since new she presents immaculately and her interior styling by Todhunter Earle with exterior design by Nuvolari Lenard can truly be admired throughout this impressive vessel.

Upon boarding the yacht's swim platform guests are immediately greeted by a vast main deck aft, complete with a comfortable lounge area aft and a sizable al fresco dining space. Inside the main deck lounge large picture windows line the room and fold out balconies on both the port and starboard sides lend to a relaxingly modern yet minimalist interior.

A guest double cabin is located forward of the formal dining area and is complete with an en suite bathroom and day bed. Two queen size double cabins are located amidships on the lower deck aft and two twin cabins each with pullman berths are located on the lower deck forward. A private stairwell and lobby lead to the vast full beam master suite, which is equipped with large windows and enhanced by a walk in wardrobe and generous en suite bathroom.

Many sought-after amenities can be found on the yacht's exterior decks. A sizable saltwater pool is located on the foredeck and a jacuzzi can be found on the sun deck. Those looking to unwind after a long day of exploration on the water can enjoy a movie under the covered lounge on the sun deck or relax on the sunpads aft.

Four Seakeeper gyro stabilisers ensure comfort while underway and at anchor, and twin 4,613hp diesel engines allow top speeds of 30 knots. With a shallow draft of 2m (6.6ft) SANAM can reach some of the most remote locations, and at 10.5 knots she has a transatlantic range of 4,600nm.

## Principales caractéristiques

---

**Impeccably maintained and used privately as a single season yacht by one owner since new**

---

**A large saltwater swimming pool can be enjoyed on the foredeck along with a jacuzzi on the sun deck**

---

**Bright, modern, and minimalist interior styling throughout the yacht with fold out balconies on the port and starboard sides of the main deck for open air living**

---

**Flexible accommodation for up to 14 guests in six spacious cabins**

---

**Four Seakeeper gyro stabilisers for comfort while underway and at anchor**

---

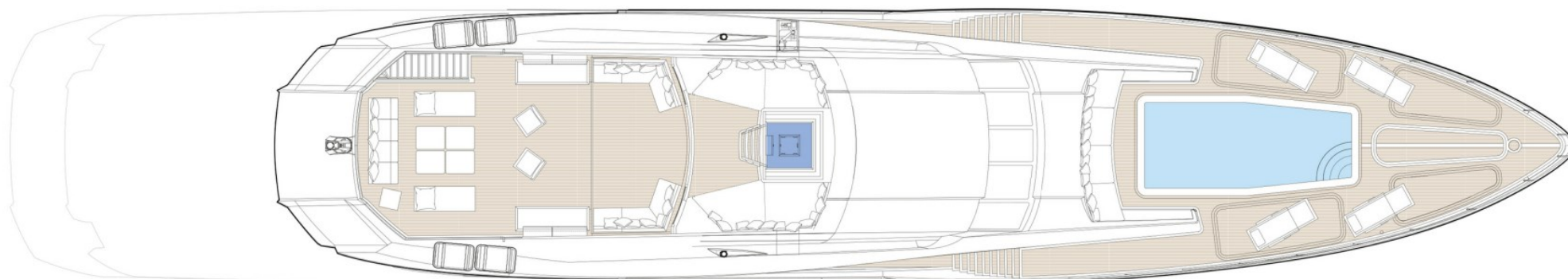
## Annexes

---

1 x Castoldi Rescue tender Jet 21LC, 260 HP, turbo drive waterjet, 2 x Sea Doo 2020 RXPX 300 hp



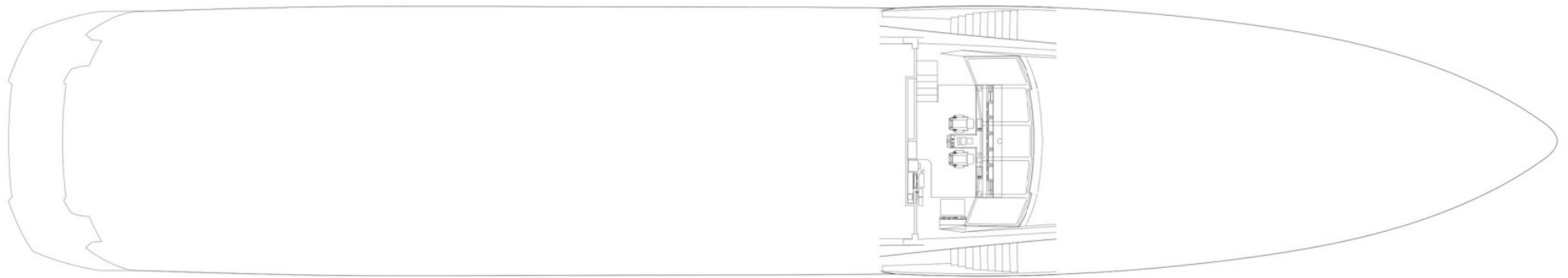
# SUN DECK



GUEST AREAS     OWNER'S SUITE     GUEST CABINS     JACUZZI     POOL



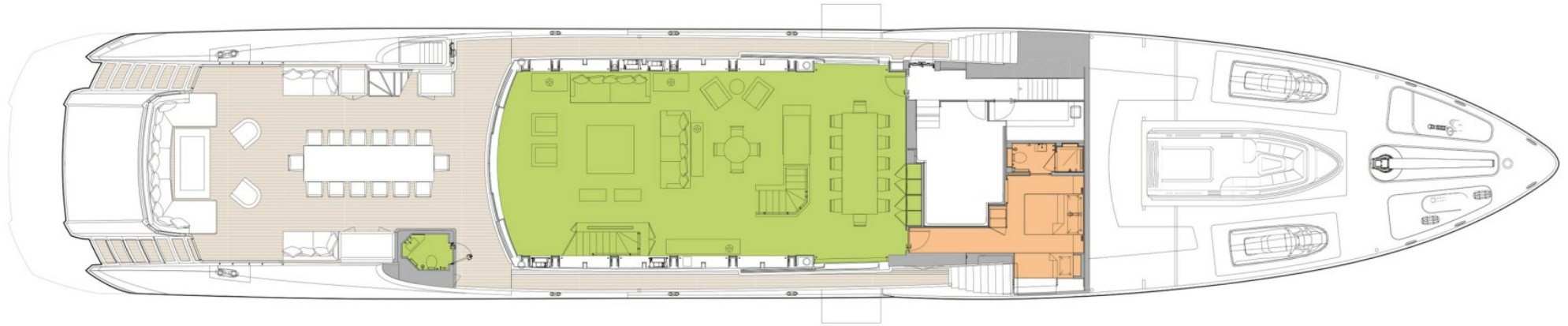
# WHEELHOUSE DECK



■ GUEST AREAS   ■ OWNER'S SUITE   ■ GUEST CABINS   ■ JACUZZI   ■ POOL



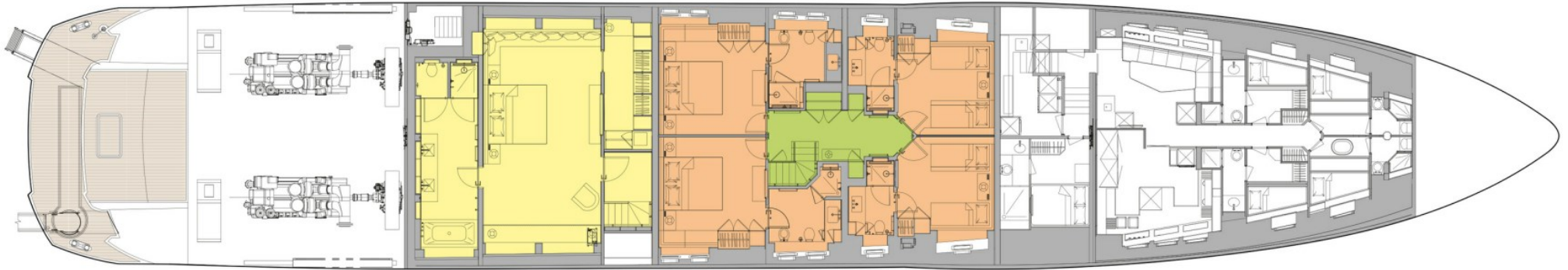
# MAIN DECK



■ GUEST AREAS   ■ OWNER'S SUITE   ■ GUEST CABINS   ■ JACUZZI   ■ POOL



# LOWER DECK



■ GUEST AREAS ■ OWNER'S SUITE ■ GUEST CABINS ■ JACUZZI ■ POOL



# BURGESS

# WORLD CLASS. WORLD WIDE.

London +44 20 7766 4300	Monaco +377 97 97 81 21	New York +1 212 223 0410	Miami +1 305 672 0150	Singapore +65 9665 8990	Beverly Hills +1 310 424 5112	Palma +34 971 495 413	Athens +30 210 967 1661
	Dubai +971 4 425 5874	Phuket +66 7623 9739	Hong Kong +852 6496 2094	Tokyo +81 46 738 8612	Sydney +61 499 945 557	Mumbai +91 98211 67253	

La publicité de ce(s) navire(s) dans des publications imprimées, sur Internet ou sur tout autre support n'est pas autorisée sans l'autorisation écrite préalable de Burgess.  
Toutes les informations sont données de bonne foi et sont considérées comme exactes, mais elles ne peuvent être garanties.

Dernière mise à jour : 29 février 2024