

SALVAJE



SALVAJE APERÇU.

SALVAJE is fast and stable, smoothly combining high performance sailing with stylish luxury to offer the ultimate in comfort, space and versatility. The yacht's large aft cockpit can be sheltered by an electrically operated 'glass' panels for comfortable dining underway. The flybridge provides an alternative al fresco area for relaxing and dining when at anchor. A sizeable spa pool is ingeniously concealed in the aft deck and tenders are stowed out of sight beneath the foredeck.

With a voluminous interior, SALVAJE is light and airy, yet full of character with unique textures, contrasts and detailing throughout. On the main deck, a floor to ceiling carved leather 'wall' with glass inserts houses an integrated 103" television, cleverly dividing main saloon from dining room. Accommodation is provided for up to 11 guests in five beautiful, contemporary cabins with pale marble en suite bathrooms. A full beam master suite is situated amidships, plus a VIP suite, a queen cabin and two twins (one with pullman).

A true world cruiser, SALVAJE can access all areas, including shallow harbours and anchorages.

Principales caractéristiques

Side boarding platform

Large swim platform

Exercise equipment

Spacious flybridge sunbathing and dining areas

Jacuzzi on the aft deck

SALVAJE

Flybridge jacuzzi



Flybridge



Flybridge



Sunloungers



BURGESS

Discover the difference.
burgessyachts.com



SALVAJE

Flybridge dining area



Main deck lounge



Main deck lounge



Main deck dining area



SALVAJE

Hallway



Lower deck master cabin



Lower deck master cabin



Master shower room en suite



SALVAJE

Lower deck twin cabin



SALVAJE SPÉCIFICATIONS.



Longueur
56,4m



Chantier
2014 (refitted 2019), Alloy Yachts, New Zealand



Designer d'intérieur
Reymond Langton Design



Largeur
11m



Tirant d'eau min / max
4m/11m



Déplacement
499 tonnes



Vitesse de croisière
12 knots



Vitesse maximale
14 knots



Consommation de carburant en vitesse de croisière
160 litres par heure



Moteurs
1 x 1 450hp Caterpillar



Invités
10/11



Nb de cabines invités
5 (3 x double, 2 x twin, 1 x additional berths)



Équipage
10

[Voir le yacht sur le site](#)

[Regarder la vidéo du yacht](#)



Annexes & jeux nautiques



2 × Tenders



1 × Deck jacuzzi



Anti-jellyfish pool



2 × SeaBobs



2 × Kayaks



2 × Stand up paddleboards



Wakeboard



Waterskis



Inflatable toys



Fishing gear



Snorkelling gear

Remise en forme & bien-être



Balance trainer



Free weights

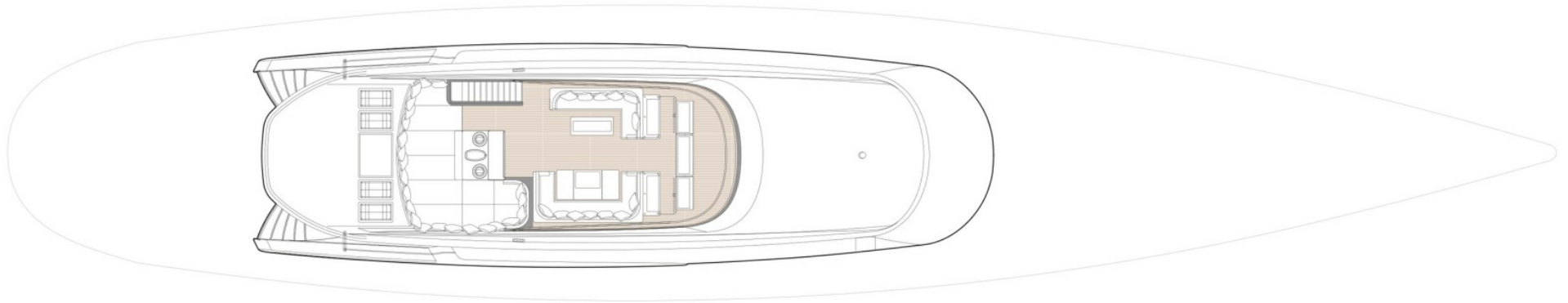


Jump ropes



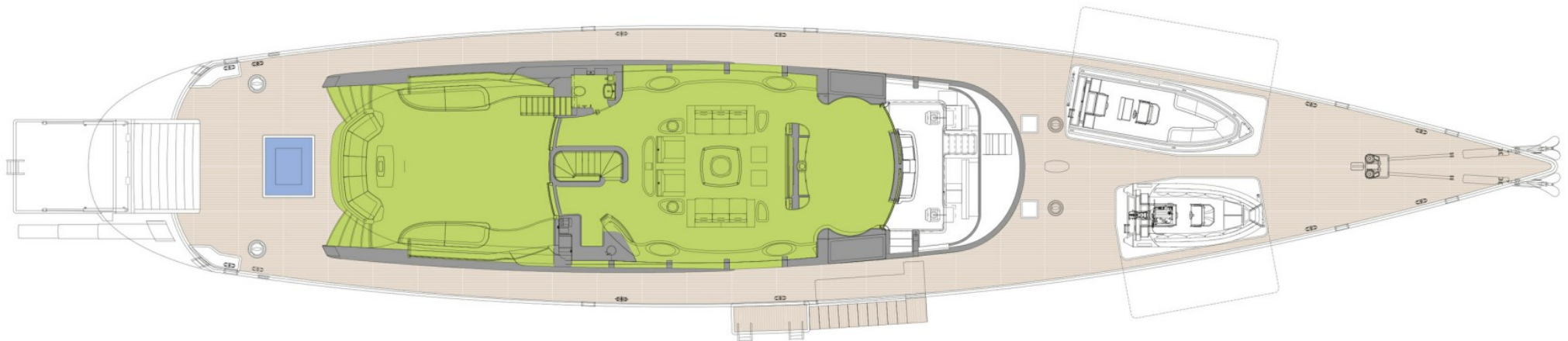
Yoga mats

FLYBRIDGE



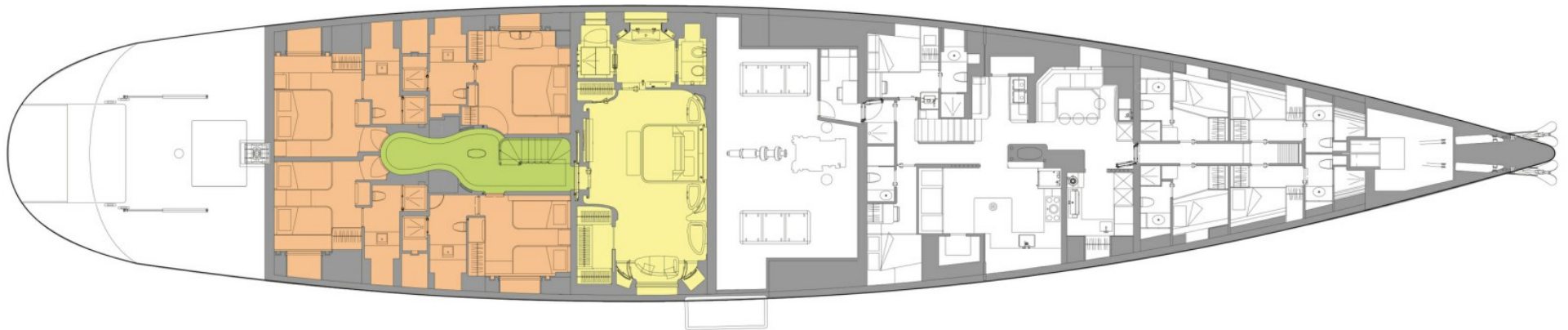
 GUEST AREAS  OWNER'S SUITE  GUEST CABINS  JACUZZI

MAIN DECK



 GUEST AREAS  OWNER'S SUITE  GUEST CABINS  JACUZZI

LOWER DECK



 GUEST AREAS  OWNER'S SUITE  GUEST CABINS  JACUZZI

BURGESS

WORLD CLASS. WORLD WIDE.

London +44 20 7766 4300	Monaco +377 97 97 81 21	New York +1 212 223 0410	Miami +1 305 672 0150	Singapore +65 9665 8990	Beverly Hills +1 310 424 5112	Palma +34 971 495 413	Athens +30 210 967 1661
	Dubai +971 4 425 5874	Phuket +66 7623 9739	Hong Kong +852 6496 2094	Tokyo +81 46 738 8612	Sydney +61 499 945 557	Mumbai +91 98211 67253	

La publicité de ce(s) navire(s) dans des publications imprimées, sur Internet ou sur tout autre support n'est pas autorisée sans l'autorisation écrite préalable de Burgess.
Toutes les informations sont données de bonne foi et sont considérées comme exactes, mais elles ne peuvent être garanties.

Dernière mise à jour : 01 mars 2024