

SALVAJE



SALVAJE

OVERVIEW.

SALVAJE is fast and stable, smoothly combining high performance sailing with stylish luxury to offer the ultimate in comfort, space and versatility. The yacht's large aft cockpit can be sheltered by an electrically operated 'glass' panels for comfortable dining underway. The flybridge provides an alternative al fresco area for relaxing and dining when at anchor. A sizeable spa pool is ingeniously concealed in the aft deck and tenders are stowed out of sight beneath the foredeck.

With a voluminous interior, SALVAJE is light and airy, yet full of character with unique textures, contrasts and detailing throughout. On the main deck, a floor to ceiling carved leather 'wall' with glass inserts houses an integrated 103" television, cleverly dividing main saloon from dining room. Accommodation is provided for up to 11 guests in five beautiful, contemporary cabins with pale marble en suite bathrooms. A full beam master suite is situated amidships, plus a VIP suite, a queen cabin and two twins (one with pullman).

A true world cruiser, SALVAJE can access all areas, including shallow harbours and anchorages.

Key features

Side boarding platform

Large swim platform

Exercise equipment

Spacious flybridge sunbathing and dining areas

Jacuzzi on the aft deck

SALVAJE

Flybridge jacuzzi



Flybridge



Flybridge



Sunloungers



SALVAJE

Flybridge dining area



Main deck lounge



Main deck lounge



Main deck dining area



SALVAJE

Hallway



Lower deck master cabin



Lower deck master cabin



Master shower room en suite



SALVAJE

Lower deck twin cabin



SALVAJE

SPECIFICATION.



Length
56.4m (185.1ft)



Built
2014 (refitted 2019), Alloy Yachts, New Zealand



Interior designer
Reymond Langton Design



Beam
11m (36.1ft)



Draft min/max
4m (13.1ft)/11m (36.1ft)



Displacement
499 tonnes



Cruising speed
12 knots



Maximum speed
14 knots



Fuel consumption at cruising speed
160 litres per hour



Engines
1 x 1,450hp Caterpillar



Guests
10/11



No. of guest cabins
5 (3 x double, 2 x twin, 1 x additional berths)



Crew
10

[View yacht on website](#)

[Watch yacht video](#)



SALVAJE

EQUIPMENT.

Tenders & toys



2 x Tenders



1 x Deck jacuzzi



Anti-jellyfish pool



2 x SeaBobs



2 x Kayaks



2 x Stand up paddleboards



Wakeboard



Waterskis



Inflatable tows



Fishing gear



Snorkelling gear

Fitness & wellness



Balance trainer



Free weights



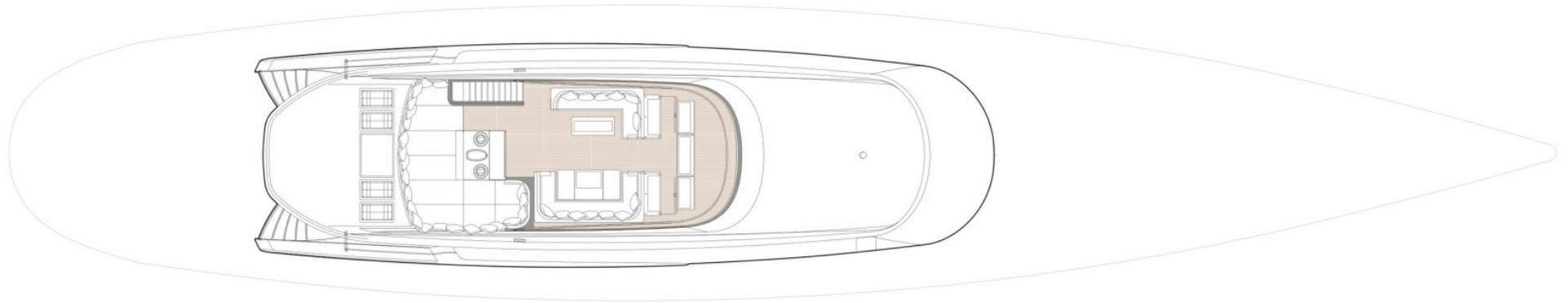
Jump ropes



Yoga mats

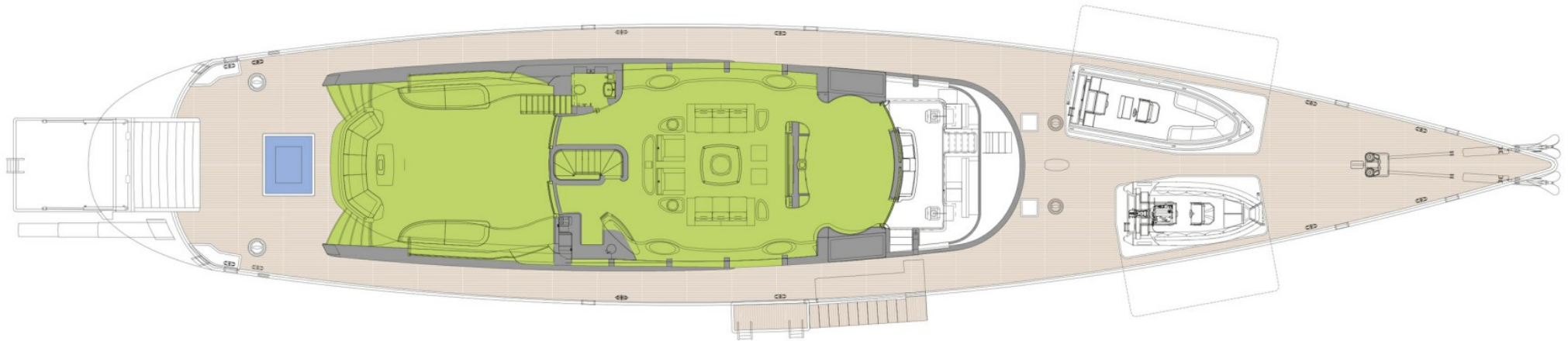


FLYBRIDGE



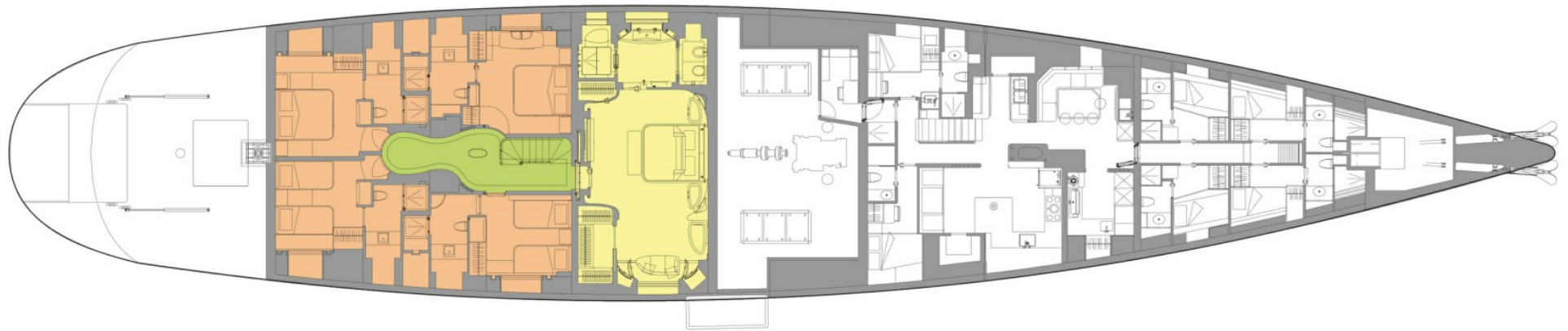
■ GUEST AREAS ■ OWNER'S SUITE ■ GUEST CABINS ■ JACUZZI

MAIN DECK



- GUEST AREAS
- OWNER'S SUITE
- GUEST CABINS
- JACUZZI

LOWER DECK



■ GUEST AREAS ■ OWNER'S SUITE ■ GUEST CABINS ■ JACUZZI

BURGESS

WORLD CLASS. WORLD WIDE.

London +44 20 7766 4300	Monaco +377 97 97 81 21	New York +1 212 223 0410	Miami +1 305 672 0150	Singapore +65 9665 8990	Beverly Hills +1 310 424 5112	Palma +34 971 495 413	Athens +30 210 967 1661
	Dubai +971 4 425 5874	Phuket +66 7623 9739	Hong Kong +852 6496 2094	Tokyo +81 46 738 8612	Sydney +61 499 945 557	Mumbai +91 98211 67253	

Advertising of these vessel(s) in printed publications, on the internet or in any other medium is not permitted without prior written permission from Burgess. All particulars are given in good faith and are believed correct but they cannot be guaranteed.

Last updated: 01 March 2024