

SALUZI



OVERVIEW.

With a distinctive style that transports you to a vibrant, modern beach house, SALUZI invites up to 32 guests to recharge and revitalise across her five decks, with unusual features including a spa, salon, karaoke bar and open air cinema.

As the day begins, make your way to breakfast on the main deck aft where there is a range of dining tables that offer a more intimate mood to large group mealtimes. The deck crew are ready to take you on a diving and snorkelling expedition to a nearby coral reef that is teeming with sea life; SALUZI's shallow draft means she can even venture among coral reefs and closer to the shore than most yachts of her size. Then take a spin on the dizzying array of watertoys, from the various jetskis, jet board, towables, waterskiing and wakeboarding gear to leisurely options like paddleboards and a glass bottomed kayak.

The crew are renowned for their beach BBQs, so you are whisked by tender to a secluded tropical shoreline to experience one first hand, with fun activities, cool cocktails and freshly grilled delicacies on tap. After lunch is over, everyone heads back to SALUZI for the afternoon; it is impossible to run out of things to do, whether you crave privacy or convivial fun.

The sun deck is always inviting, with two jacuzzis and endless options for lounging both in the sun and shade. With your workout in the gym complete, an afternoon of pampering in the salon and wet spa is calling, while the children are occupied by fun party games in the upper deck lounge before an early dinner and open air movie night on the sun deck.

SALUZI's stunning Luiz de Basto design is reminiscent of a hip Miami hotel; it is bold, bright and uplifting, with eye-catching pops of colour and original modern art. There are two plush master suites on the bridge deck, six VIP suites on upper and one on main deck alongside seven well appointed double cabins.

As the sun sets on the beautiful tropical scenery, elegant cocktails and canapes are served on the bridge deck, where you drift between the piano bar lounge and the expansive views of the exterior, with sumptuous sofas and high tables creating the mood of a chic city rooftop bar. After a remarkable Asian fusion dinner, you head to the main deck lounge where karaoke has been set up for your own private talent show, and you party the night away in luxurious style.

Key features

Regularly maintained

Spa facilities: sauna, hammam, beauty room

Two master cabins

Can accommodate up to 32 guests

Six VIP cabins

Fully equipped gym

Outdoor cinema

Two spa therapists and a personal trainer on board

Two jacuzzis on the sun deck

Zero speed stabilisers to reduce any rolling motion while at anchor

SALUZI

Sun deck aft loungers and jacuzzis



Sun deck lounge



Sun deck loungers



Bridge deck aft seating area



SALUZI

Main deck aft dining area



Main deck lounge



Bridge deck lounge



Upper deck lounge



BURGESS

Discover the difference.
burgessyachts.com



SALUZI

Upper deck lounge



Foyer



Upper deck port VIP cabin



Upper deck starboard VIP cabin



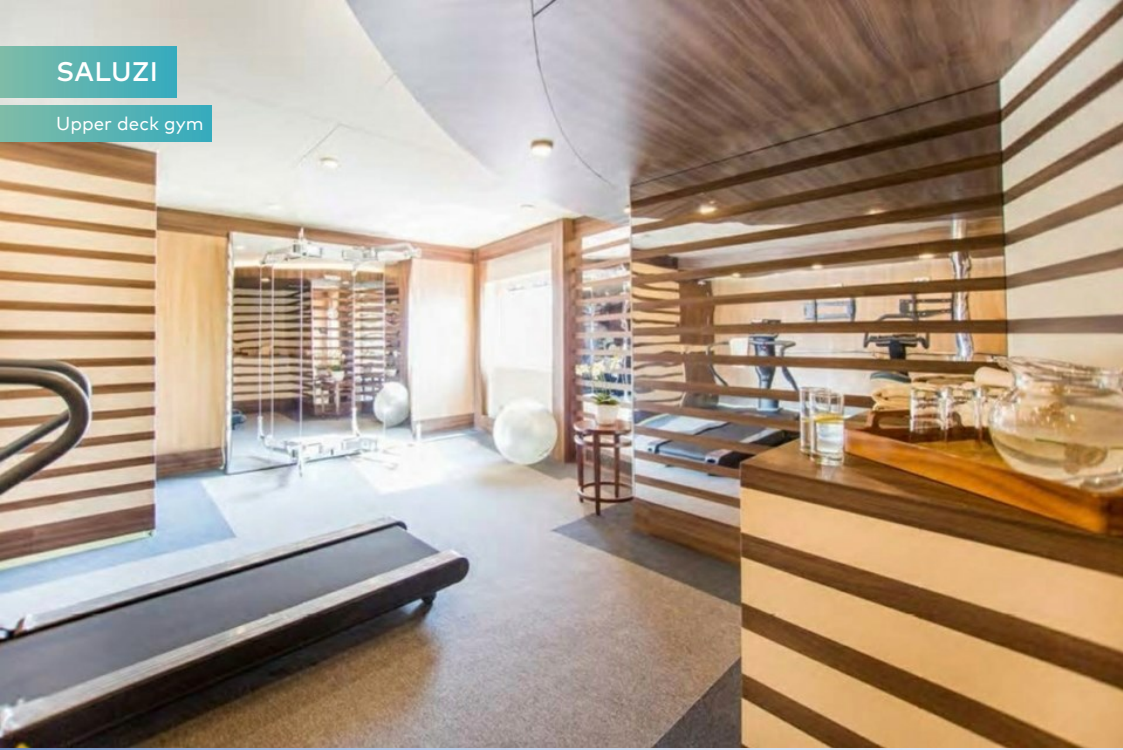
BURGESS

Discover the difference.
burgessyachts.com



SALUZI

Upper deck gym



Upper deck spa



Watersports



SALUZI

SPECIFICATION.



Length
69m (226.3ft)



Built
2003 (refitted 2014), Austal, Australia



Interior designer
Luiz de Basto Designs



Beam
13.8m (45.3ft)



Draft
2.4m (7.9ft)



Gross tonnage
1,739



Cruising speed
11 knots



Maximum speed
14 knots



Fuel consumption at cruising speed
250 litres per hour



Engines
2 x 1,073hp MTU



Guests
32



No. of guest cabins
16 (12 x double, 4 x double/twin)



Crew
32

[View yacht on website](#)

[Watch yacht video](#)



Tenders & toys



2 x Tenders



2 x Deck jacuzzis



Anti-jellyfish pool



RYA training centre for jetskis & waverunners



2 x Waverunners



3 x SeaBobs



4 x Kayaks



12 x Stand up paddleboards



Wakeboard



Kneeboard



Surfboard



Windsurfer



Waterskis



Inflatable tows



Fishing gear



Snorkelling gear

Fitness & wellness



Balance trainer



Cross trainer



Free weights



Multi gym



Training bench



Treadmill



Upright stationary bike

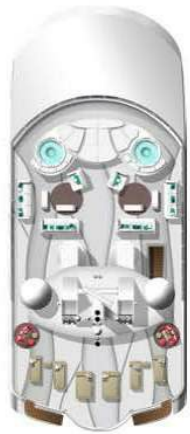


Yoga mats



Massage room





1,



2,



3,



4,



5,

BURGESS

WORLD CLASS. WORLD WIDE.

London +44 20 7766 4300	Monaco +377 97 97 81 21	New York +1 212 223 0410	Miami +1 305 672 0150	Singapore +65 9665 8990	Beverly Hills +1 310 424 5112	Palma +34 971 495 413	Athens +30 210 967 1661
	Dubai +971 4 425 5874	Phuket +66 7623 9739	Hong Kong +852 6496 2094	Tokyo +81 46 738 8612	Sydney +61 499 945 557	Mumbai +91 98211 67253	

Advertising of these vessel(s) in printed publications, on the internet or in any other medium is not permitted without prior written permission from Burgess. All particulars are given in good faith and are believed correct but they cannot be guaranteed.

Last updated: 29 February 2024