

S7

S7

S7

OVERVIEW.

Triple award-winner S7 is the most advanced yacht built to date in the Tansu Mothership Series. Offering premium Dutch engineering, impressive volume and a contemporary, light-filled beach house living area, S7 is the dream charter package.

Delivered in 2016, S7 was designed with guest comfort in mind - the yacht has state of the art electric stabilisers and thrusters as well as a hydraulic system created to reduce noise and vibrations. It's truly the outdoor spaces though that really set this yacht apart. The striking exterior appearance of the yacht boast an elongated aft deck perfect for enjoying the sun, launching toys, and exercising. The massive sundeck features a central bar with panoramic views and a retractable roof, as well as large comfortable sun pads. On the main deck, there are large mirroring tables and seating that is fully shaded. Moving aft, you come to a long exposed aft deck typical of the explorer style, where guests have an immense amount of space to utilise however they wish. S7 continues to impress moving indoors, where spaces are kept simple, clean and airy. The long main saloon has huge windows providing generous views, as well as a full dining table and wine fridge at the forward end. All 5 ensuite cabins follow a similar minimalist styling to the saloon above. Spacious, open cabins comfortably sleep 10 guests in 3 double and 2 twin cabins. The full-beam master includes an office space and his and hers' bathrooms.

S7 is the perfect charter yacht for guests looking for a laidback, beach house experience on the water where they can maximise the amazing outdoor facilities in the most beautiful locations.

Key features

Showboat Design Award, Best Interior Layout & Design (2017), Robb Report Best of the Best (2018), German Design Award (2018)

Recently refitted

12m Novamarine chase tender

Low fuel consumption

Zero speed stabilisers to reduce any rolling motion while at anchor

S7

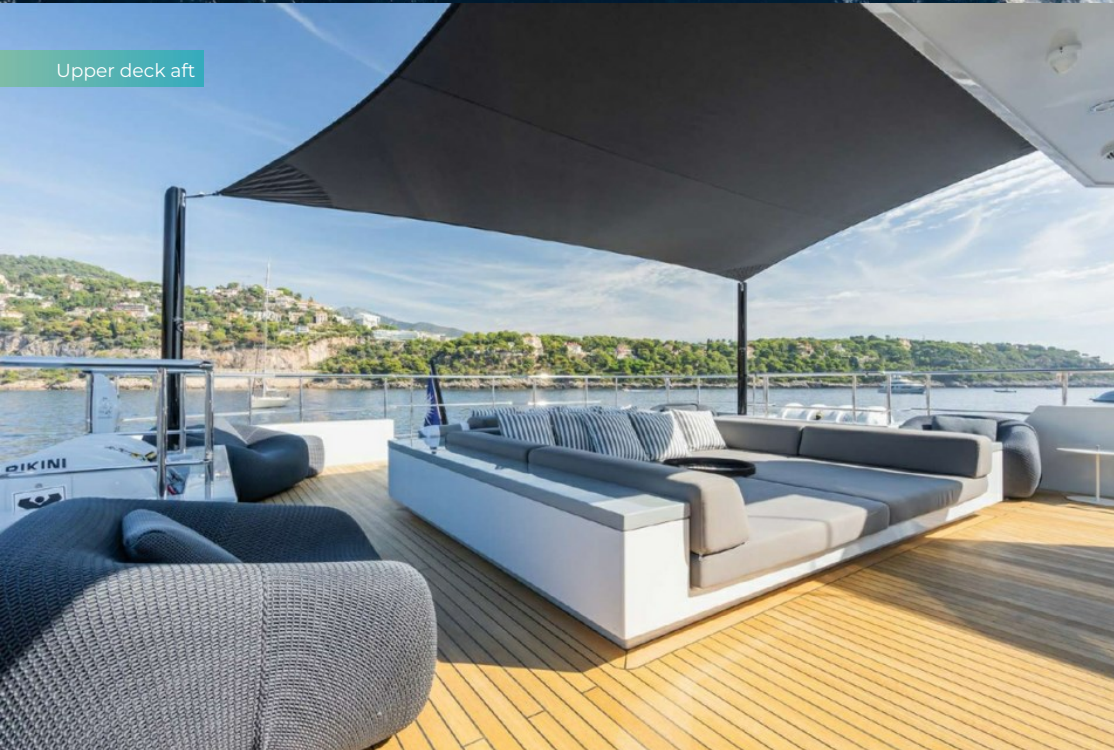
Aerial view



Watertoys



Upper deck aft



Main deck aft



S7

Main deck dining area



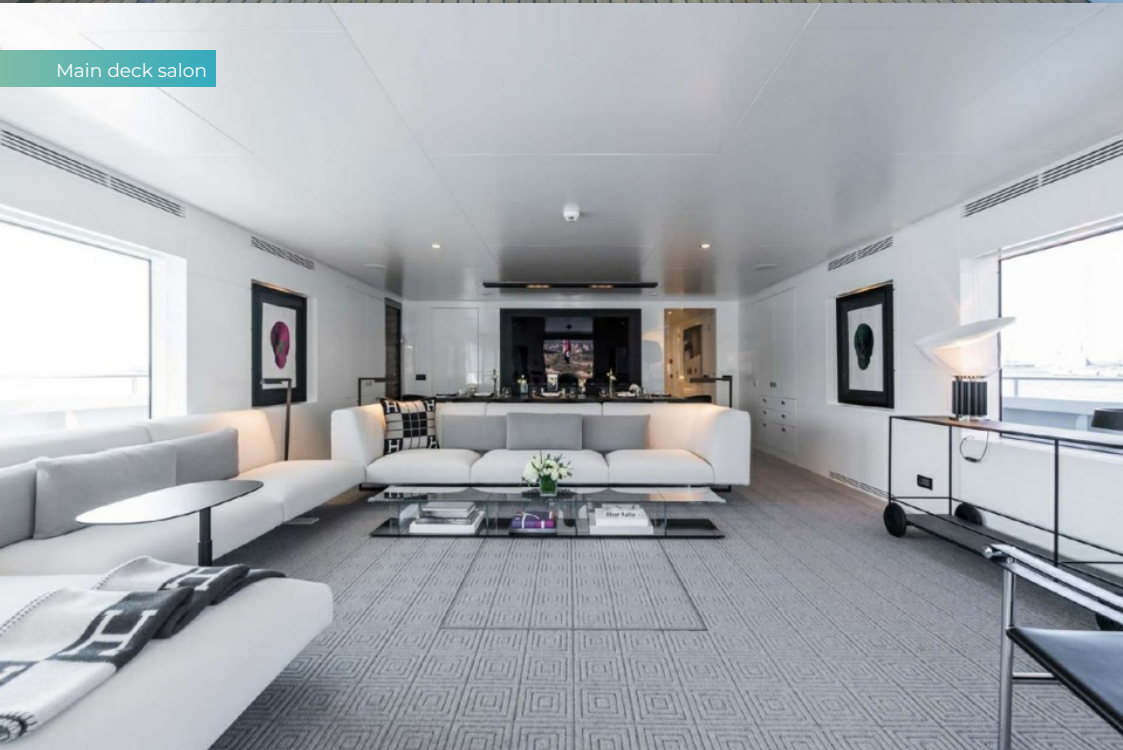
Main deck lounging area



Foredeck



Main deck salon



S7

Main deck dining



Main deck dining



Master cabin



Master cabin



S7

Master cabin en suite



Double cabin



Twin cabin



Watertoys



S7

Watertoys



Tender



Seabob



Cruising



S7

SPECIFICATION.



Length
39.3m (128.9ft)



Built
2016 (refitted 2022), Tansu Yachts



Interior designer
Tansu Yachts



Beam
7.6m (24.9ft)



Draft
2.6m (8.5ft)



Gross tonnage
298



Cruising speed
10 knots



Maximum speed
16 knots



Fuel consumption at cruising speed
125 litres per hour



Engines
2 x 1,450hp Caterpillar



Guests
12



No. of guest cabins
5 (3 x double, 2 x twin)



Crew
7

[View yacht on website](#)

[Watch yacht video](#)



S7

TENDERS & TOYS



1 x Towed tender



1 x Tender



2 x SeaBobs



2 x eFoils



2 x Stand up paddleboards



Wakeboard



Anti-jellyfish pool



Inflatable platform



Inflatable tows



Snorkelling gear



Fishing gear

S7

FITNESS & WELLNESS



Free weights

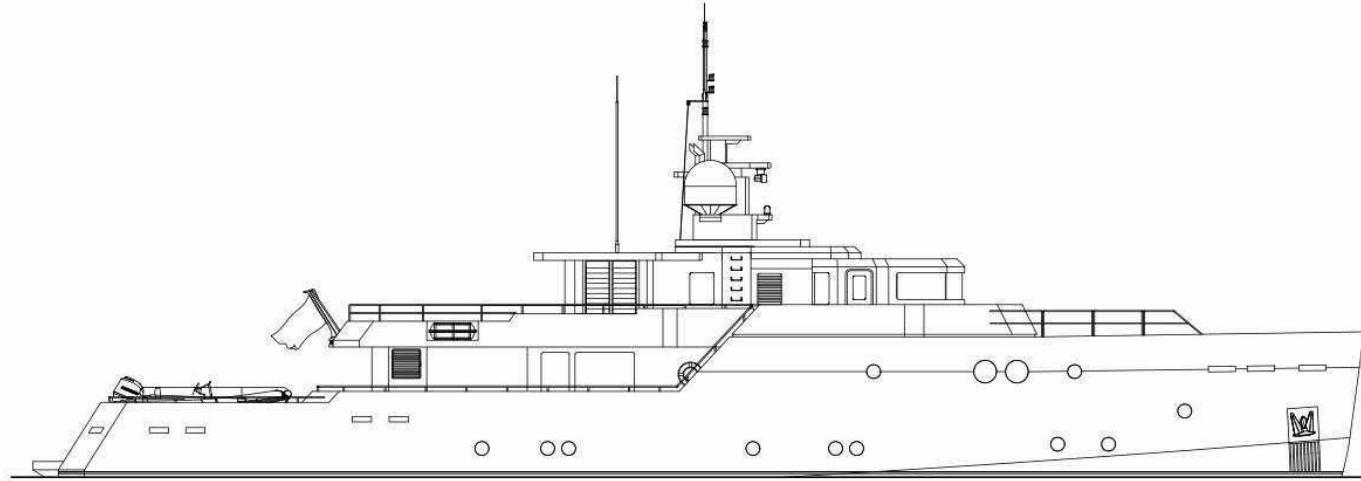


Resistance bands

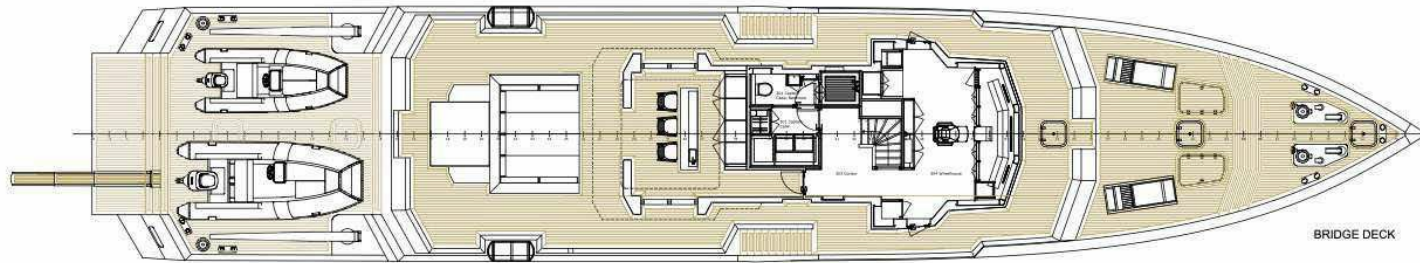


Yoga mats

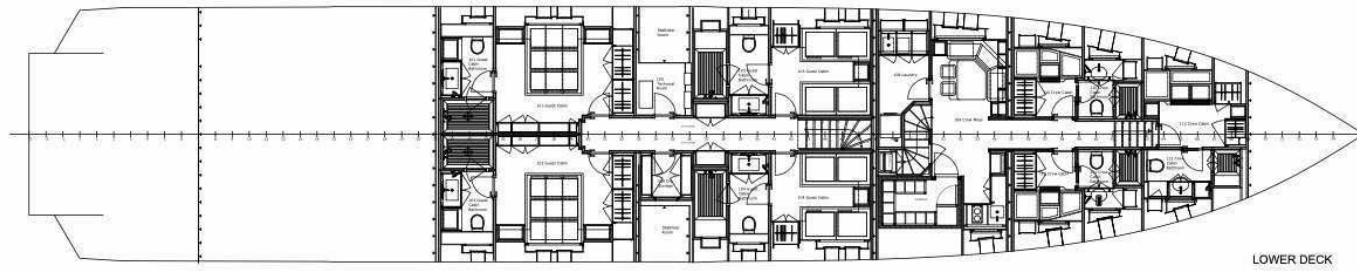
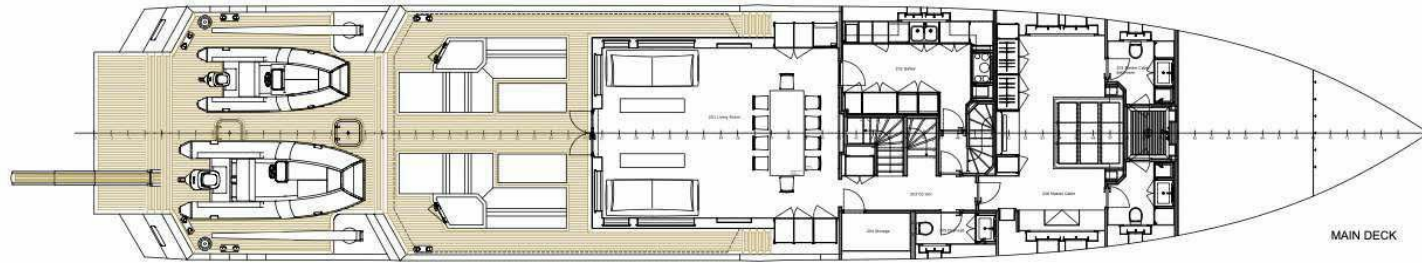




LONGITUDINAL VIEW



BRIDGE DECK



BURGESS

WORLD CLASS. WORLD WIDE.

London +44 20 7766 4300	Monaco +377 97 97 81 21	New York +1 212 223 0410	Miami +1 305 672 0150	Singapore +65 9665 8990	Beverly Hills +1 310 424 5112	Palma +34 971 495 413	Athens +30 210 967 1661
Dubai +971 4 425 5874	Phuket +66 7623 9739	Hong Kong +852 6496 2094	Tokyo +81 46 738 8612	Sydney +61 499 945 557	Mumbai +91 98211 67253	Shanghai +86 187 0898 6800	Rio de Janeiro +55 21 2553-3238
Aspen +1 970 710 2294							

Advertising of these vessel(s) in printed publications, on the internet or in any other medium is not permitted without prior written permission from Burgess. All particulars are given in good faith and are believed correct but they cannot be guaranteed.

Last updated: 13 March 2025