

RUYA



RUYA

SPÉCIFICATIONS.



Prix demandé
EUR 15 750 000



Chantier
2016 (refitted 2021), Alia Yachts, Turkey



Longueur
41,4m



Largeur
8,9m



Tirant d'eau
2,5m



Tonnage brut
499



Vitesse de croisière
12 knots



Vitesse maximale
13 knots



Autonomie
4 000 nm



Pavillon
Cayman Islands



Position
West Mediterranean



Classe
Lloyds 100 A1 SSC Yacht Mono G6 MCH, UMS



Designer extérieur
Sam Sorgiovanni



Designer d'intérieur
Sam Sorgiovanni



Construction
Hull - GRP, Superstructure - GRP



Équipage
9



Invités
12



Cabines
5 (3 × double, 2 × double/twin, 2 × additional berths)



Moteurs
2 × 1 000hp Caterpillar



Propulsion
Twin screw diesel yacht

Note

Not available for sale to US residents while in US waters.

[Voir le yacht sur le site](#)

[Regarder la vidéo du yacht](#)



RUYA

Main deck lounge



Main deck lounge



Main deck dining area



Foyer



BURGESS

Discover the difference.
burgessyachts.com



RUYA

Main deck master cabin study



Master cabin



Master cabin



Master cabin en suite bathroom



BURGESS

Discover the difference.
burgessyachts.com



RUYA

Double cabin



Double cabin en suite bathroom



Lower deck double cabin



Lower deck double cabin bathroom en suite



BURGESS

Discover the difference.
burgessyachts.com



RUYA

Twin/convertible cabin



Upper deck lounge



Sky lounge / cinema



Bridge



BURGESS

Discover the difference.
burgessyachts.com



RUYA

Jacuzzi



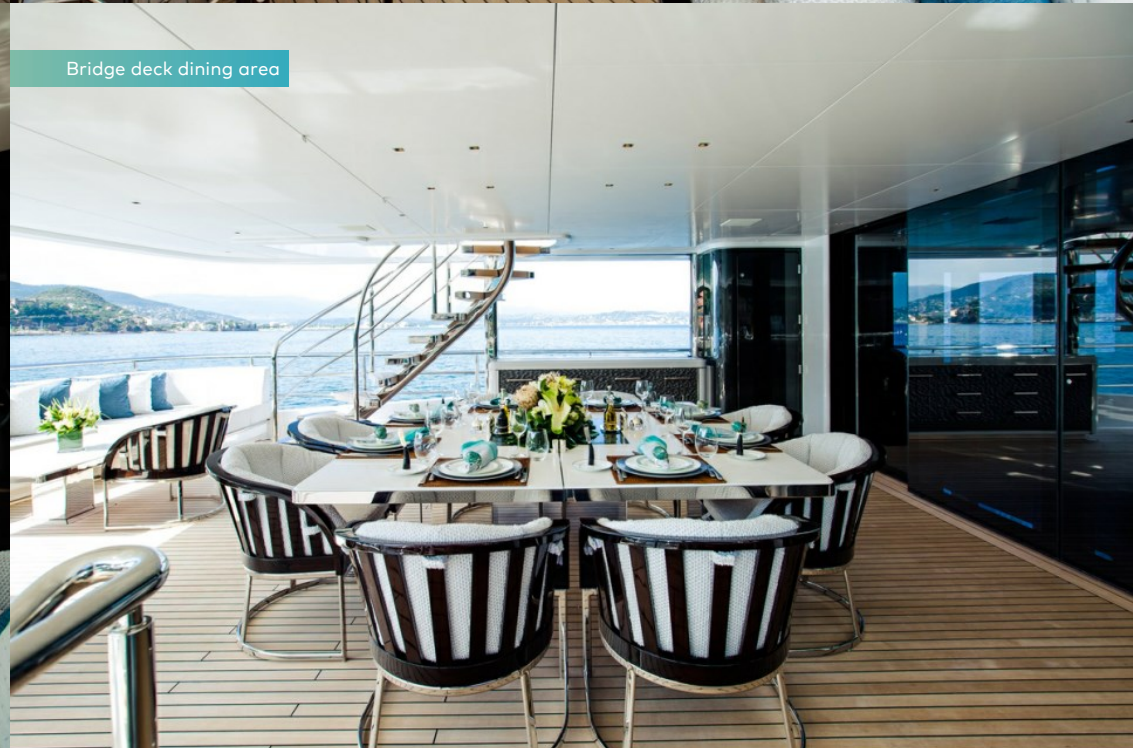
Sun deck



Sun deck



Bridge deck dining area



BURGESS

Discover the difference.
burgessyachts.com



RUYA

Main deck aft



Main deck aft



Beach club



Swim platform



BURGESS

Discover the difference.
burgessyachts.com



RUYA

Aerial



Cruising



Cruising



Cruising



BURGESS

Discover the difference.
burgessyachts.com



RUYA

APERÇU.

Delivered in 2016, the 41.4m (135.8ft) multi-award-winning motor yacht RUYA was built in composite to Lloyd's classification and MCA compliance by the Turkish shipyard Alia Yachts. This 499GT yacht won the World Superyacht Awards' Displacement motor yacht below 500GT category as well as ShowBoats Design Awards for her naval architecture and her Australian Outback-inspired interiors, both by Sam Sorgiovanni.

Built to celebrate al fresco living, RUYA has a huge 93sqm (1,001sqft) sun deck complete with bar, BBQ, open-air dining shaded by the hardtop and a glass-fronted 10-person jacuzzi for soaking in the sun. At sea level you will find a beach club with a hydraulic swim platform that gives step-free access to the water, and a tender garage behind a shell door to port.

Her award-winning interior design makes use of indigenous material like bamboo and Australian silky oak to create a relaxed, comforting environment. Floor-to-ceiling glass in the main saloon and formal dining room create a remarkable sense of openness and that flows into the main deck aft lounge area. There's shaded open-air dining and a sun lounge on the upper deck aft and inside is a home cinema with an 80in screen and surround sound for movie nights.

RUYA welcomes up to 12 guests in five finely appointed suites. There is a full-beam master suite forward on the main deck, wonderfully illuminated by large picture windows, with a private office and an en suite with his-and-hers basins with bath and shower room. Two double cabins and two twin cabins with pullmans on the lower deck complete her accommodation.

Powered by twin 1,000hp Caterpillar diesel engines, RUYA has a cruising speed of 10 knots and a maximum speed of 14 knots with a transatlantic range of 3,500nm. Zero speed stabilisers ensure stability while underway and at anchor, while her low fuel consumption reduces her economical impact.

Principales caractéristiques

Impressive interior volume of 499GT

Award winning yacht with exterior and interior design by Sam Sorgiovanni

Accommodation for up to 12 guests in 5 cabins

Spacious 93sqm (1,001sqft) sun deck with full wet bar, al fresco dining, BBQ, and oversized glass-faced jacuzzi

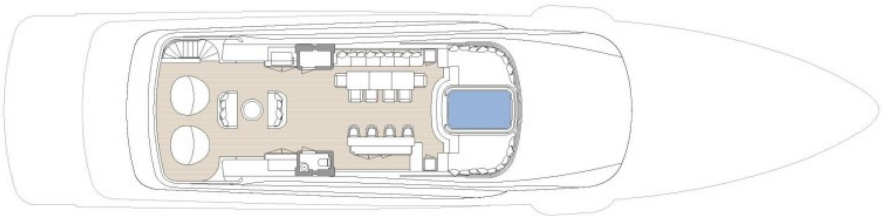
Beach club with hydraulic swim platform

Tender garage with port side access



Annexes

Novurania Chase 19 ft



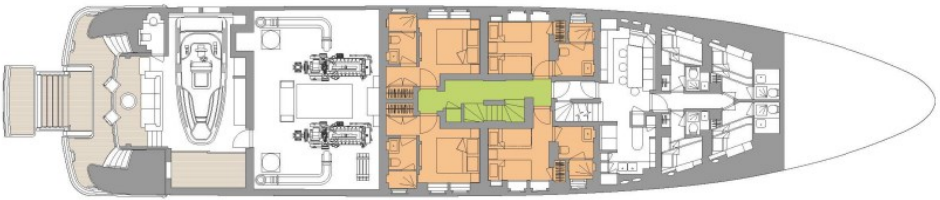
SUN DECK



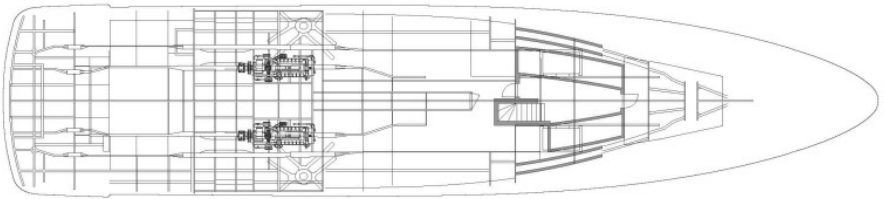
UPPER DECK



MAIN DECK



LOWER DECK



BOTTOM DECK

■ GUEST AREAS ■ MASTER SUITE ■ GUEST CABINS ■ MASTER SUITE OFFICE ■ JACUZZI

BURGESS

WORLD CLASS. WORLD WIDE.

London	Monaco	New York	Miami	Singapore	Beverly Hills	Palma	Athens
+44 20 7766 4300	+377 97 97 81 21	+1 212 223 0410	+1 305 672 0150	+65 9665 8990	+1 310 424 5112	+34 971 495 413	+30 210 967 1661
Dubai	Phuket	Hong Kong	Tokyo	Sydney	Mumbai	Shanghai	
+971 4 425 5874	+66 7623 9739	+852 6496 2094	+81 46 738 8612	+61 499 945 557	+91 98211 67253	+86 187 0898 6800	

La publicité de ce(s) navire(s) dans des publications imprimées, sur Internet ou sur tout autre support n'est pas autorisée sans l'autorisation écrite préalable de Burgess.
Toutes les informations sont données de bonne foi et sont considérées comme exactes, mais elles ne peuvent être garanties.

Dernière mise à jour : 16 avril 2024