

# RUYA

---





RUYA

# SPECIFICATION.



Asking price  
**EUR 15,750,000**



Built  
**2016 (refitted 2021), Alia Yachts, Turkey**



Length  
**41.4m (135.8ft)**



Beam  
**8.9m (29.2ft)**



Draft  
**2.5m (8.2ft)**



Gross tonnage  
**499**



Cruising speed  
**12 knots**



Maximum speed  
**13 knots**



Range  
**4,000 nm**



Flag  
**Cayman Islands**



Lying  
**West Mediterranean**



Class  
**Lloyds 100 A1 SSC Yacht Mono G6 MCH, UMS**



Exterior designer  
**Sam Sorgiovanni**



Interior designer  
**Sam Sorgiovanni**



Construction  
**Hull - GRP, Superstructure - GRP**



Crew  
**9**



Guests  
**12**



Cabins  
**5 (3 × double, 2 × double/twin, 2 × additional berths)**



Engines  
**2 × 1,000hp Caterpillar**



Propulsion  
**Twin screw diesel yacht**

## Note

Not available for sale to US residents while in US waters.

[View yacht on website](#)

[Watch yacht video](#)





RUYA

Main deck lounge



Main deck lounge



Main deck dining area



Foyer



BURGESS

Discover the difference.  
burgessyachts.com





RUYA

Main deck master cabin study



Master cabin



Master cabin



Master cabin en suite bathroom



BURGESS

Discover the difference.  
burgessyachts.com





RUYA

Double cabin



Double cabin en suite bathroom



Lower deck double cabin



Lower deck double cabin bathroom en suite



BURGESS

Discover the difference.  
[burgessyachts.com](http://burgessyachts.com)





RUYA

Twin/convertible cabin



Upper deck lounge



Sky lounge / cinema



Bridge



BURGESS

Discover the difference.  
burgessyachts.com





RUYA

Jacuzzi



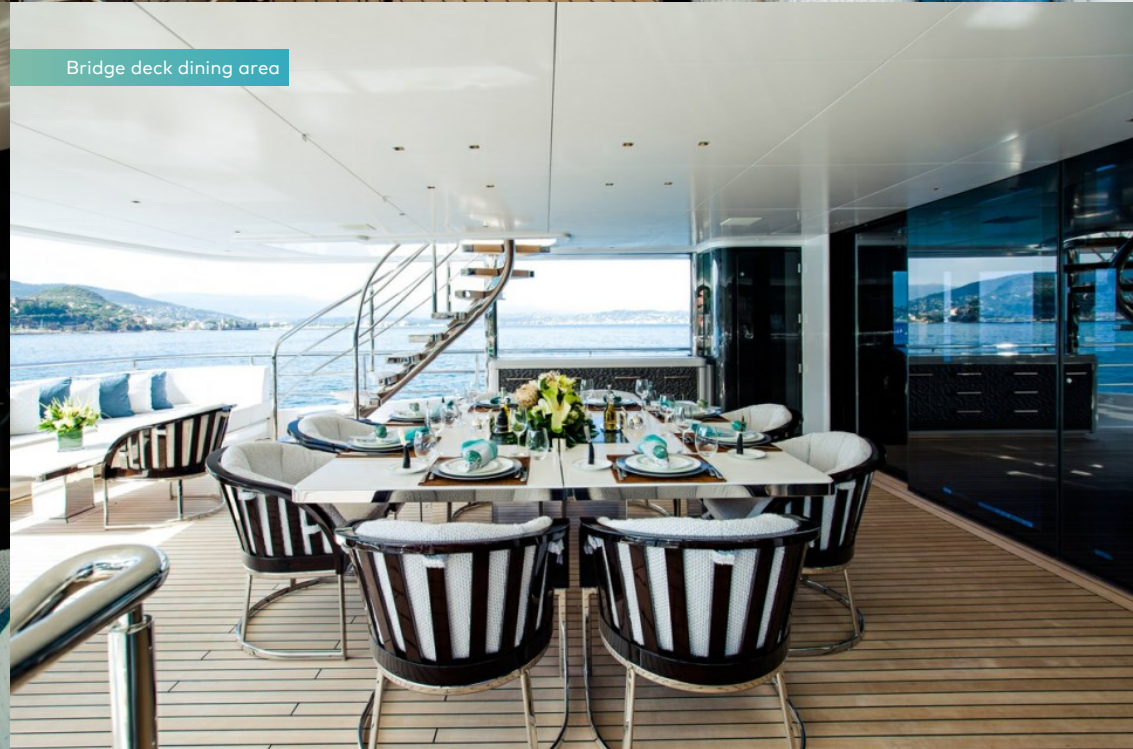
Sun deck



Sun deck



Bridge deck dining area



BURGESS

Discover the difference.  
[burgessyachts.com](http://burgessyachts.com)





RUYA

Main deck aft



Main deck aft



Beach club



Swim platform



BURGESS

Discover the difference.  
[burgessyachts.com](http://burgessyachts.com)





RUYA

Aerial



Cruising



Cruising



Cruising



BURGESS

Discover the difference.  
burgessyachts.com





RUYA

# OVERVIEW.

Delivered in 2016, the 41.4m (135.8ft) multi-award-winning motor yacht RUYA was built in composite to Lloyd's classification and MCA compliance by the Turkish shipyard Alia Yachts. This 499GT yacht won the World Superyacht Awards' Displacement motor yacht below 500GT category as well as ShowBoats Design Awards for her naval architecture and her Australian Outback-inspired interiors, both by Sam Sorgiovanni.

Built to celebrate al fresco living, RUYA has a huge 93sqm (1,001sqft) sun deck complete with bar, BBQ, open-air dining shaded by the hardtop and a glass-fronted 10-person jacuzzi for soaking in the sun. At sea level you will find a beach club with a hydraulic swim platform that gives step-free access to the water, and a tender garage behind a shell door to port.

Her award-winning interior design makes use of indigenous material like bamboo and Australian silky oak to create a relaxed, comforting environment. Floor-to-ceiling glass in the main saloon and formal dining room create a remarkable sense of openness and that flows into the main deck aft lounge area. There's shaded open-air dining and a sun lounge on the upper deck aft and inside is a home cinema with an 80in screen and surround sound for movie nights.

RUYA welcomes up to 12 guests in five finely appointed suites. There is a full-beam master suite forward on the main deck, wonderfully illuminated by large picture windows, with a private office and an en suite with his-and-hers basins with bath and shower room. Two double cabins and two twin cabins with pullmans on the lower deck complete her accommodation.

Powered by twin 1,000hp Caterpillar diesel engines, RUYA has a cruising speed of 10 knots and a maximum speed of 14 knots with a transatlantic range of 3,500nm. Zero speed stabilisers ensure stability while underway and at anchor, while her low fuel consumption reduces her economical impact.

## Key features

---

Impressive interior volume of 499GT

---

Award winning yacht with exterior and interior design by Sam Sorgiovanni

---

Accommodation for up to 12 guests in 5 cabins

---

Spacious 93sqm (1,001sqft) sun deck with full wet bar, al fresco dining, BBQ, and oversized glass-faced jacuzzi

---

Beach club with hydraulic swim platform

---

Tender garage with port side access

---

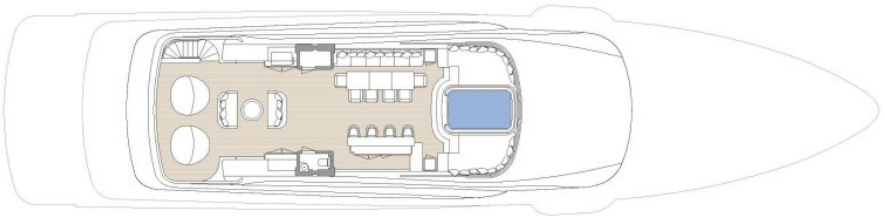


## Tenders

---

Novurania Chase 19 ft





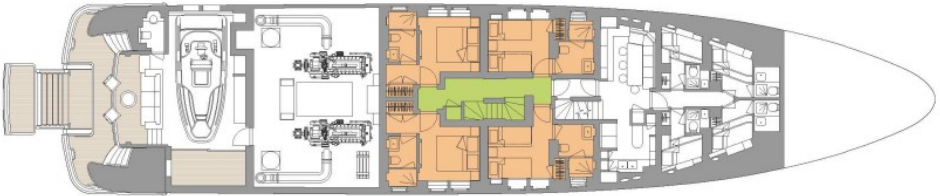
SUN DECK



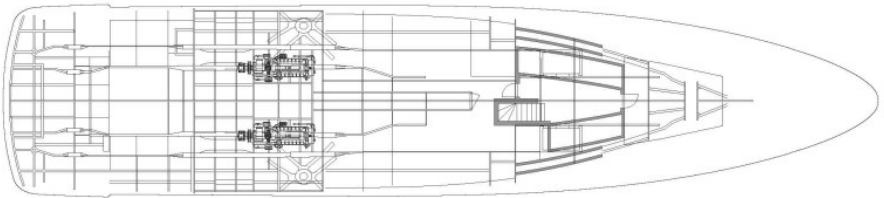
UPPER DECK



MAIN DECK



LOWER DECK



BOTTOM DECK

■ GUEST AREAS ■ MASTER SUITE ■ GUEST CABINS ■ MASTER SUITE OFFICE ■ JACUZZI



# BURGESS

# WORLD CLASS. WORLD WIDE.

London +44 20 7766 4300	Monaco +377 97 97 81 21	New York +1 212 223 0410	Miami +1 305 672 0150	Singapore +65 9665 8990	Beverly Hills +1 310 424 5112	Palma +34 971 495 413	Athens +30 210 967 1661
Dubai +971 4 425 5874	Phuket +66 7623 9739	Hong Kong +852 6496 2094	Tokyo +81 46 738 8612	Sydney +61 499 945 557	Mumbai +91 98211 67253	Shanghai +86 187 0898 6800	

Advertising of these vessel(s) in printed publications, on the internet or in any other medium is not permitted without prior written permission from Burgess. All particulars are given in good faith and are believed correct but they cannot be guaranteed.

Last updated: 16 April 2024