

ROYALE X



ROYALE X SPÉCIFICATIONS.



Prix demandé
EUR 12 800 000



Chantier
2012 (refitted 2019), Overmarine, Italy



Longueur
49,9m



Largeur
9,2m



Tirant d'eau
1,6m



Tonnage brut
488



Vitesse de croisière
27 knots



Vitesse maximale
38 knots



Autonomie
560 nm



Pavillon
Australia



Position
West Mediterranean



Classe
American Bureau of Shipping (ABS)



Designer extérieur
Stefano Righini



Designer d'intérieur
Valentina Balducci



Construction
Hull - Composite Fibreglass, Superstructure -
Composite, Deck - Teak



Équipage
9



Invités
9



Cabines
4 (3 x double, 1 x twin, 1 x additional berths)



Moteurs
3 x 4 610hp MTU



Propulsion
Triple waterjet diesel yacht

[Voir le yacht sur le site](#)



ROYALE X



BURGESS

Discover the difference.
burgessyachts.com





ROYALE X



BURGESS

Discover the difference.
burgessyachts.com



ROYALE X



BURGESS

Discover the difference.
burgessyachts.com



ROYALE X



BURGESS

Discover the difference.
burgessyachts.com



ROYALE X



BURGESS

Discover the difference.
burgessyachts.com



ROYALE X



BURGESS

Discover the difference.
burgessyachts.com



ROYALE X



BURGESS

Discover the difference.
burgessyachts.com



ROYALE X

APERÇU.

The 49.9m (163.7ft) ROYALE X, hull No.7 of the iconic Mangusta 165 series, was built in composite to ABS classification by Italian shipyard Overmarine to designs by Stefano Righini, delivered in 2012 and refitted in 2019. This sleek, powerful yacht blends comfort and performance in equal measure to create a genuinely exhilarating experience.

Three MTU 4,610hp waterjets give her a comfortable cruising speed of 27 knots and a maximum of 38 knots, and with nine Seakeeper gyrostabilisers she remains stable both at anchor and underway. Her modest draft of 1.6m (5.9ft) allows her to explore the charming bays and ports that are off-limits to many large yachts.

ROYALE X has a bright, modern interior by Valentina Balducci with beautiful bleached-teak wood floors and limed-oak panelling throughout.

She accommodates up to nine guests in four adaptable en suite cabins, including a full-beam owner's suite with a private owner's office.

The main deck aft offers built-in upholstered seating and a large dining table.

More sunbathing in privacy is available on the foredeck, with comfortable built-in sun pads.

The sun deck presents an additional open-air dining option as well as spacious lounging areas. The flybridge guarantees an interactive experience while taking advantage of the exciting speed and views.

ROYALE X's distinguished style, space and speed provides any owner with the ultimate yachting experience among the islands of the Balearics and Croatia, or port hopping along the exclusive French and Italian Rivas.

Principales caractéristiques

Fantastic condition and ready for immediate use

Expansive outdoor deck spaces

Full-beam master cabin with private office

Gym and media room

Top speed of 38kn

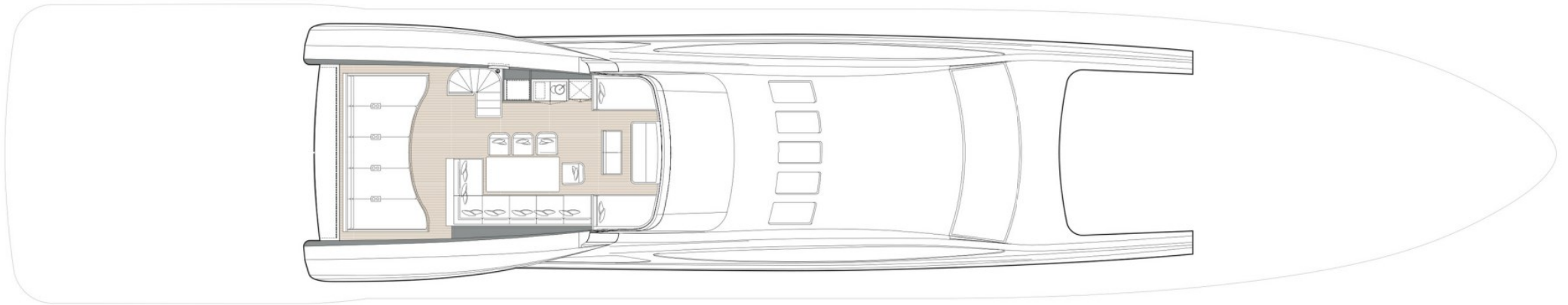
Low engine and generator hours

Nine Seakeeper stabilisers installed

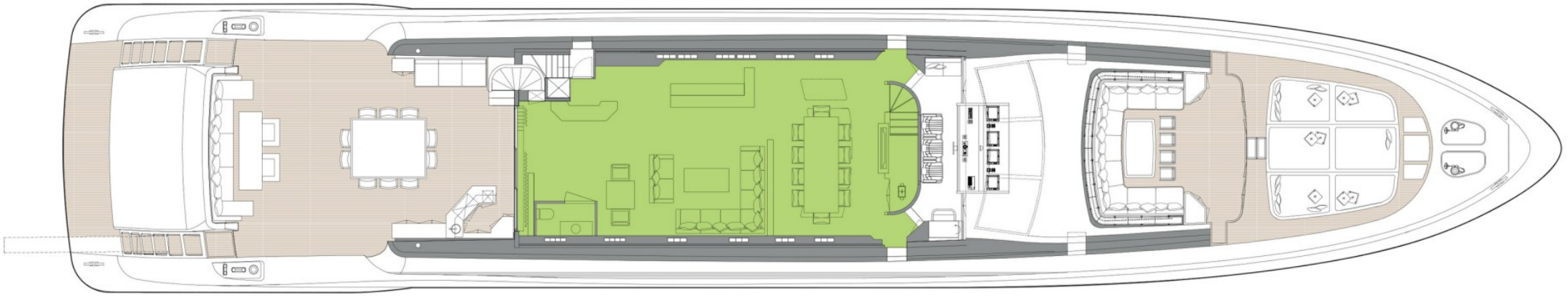
Annexes

21ft Castoldi diesel jet tender

UPPER DECK

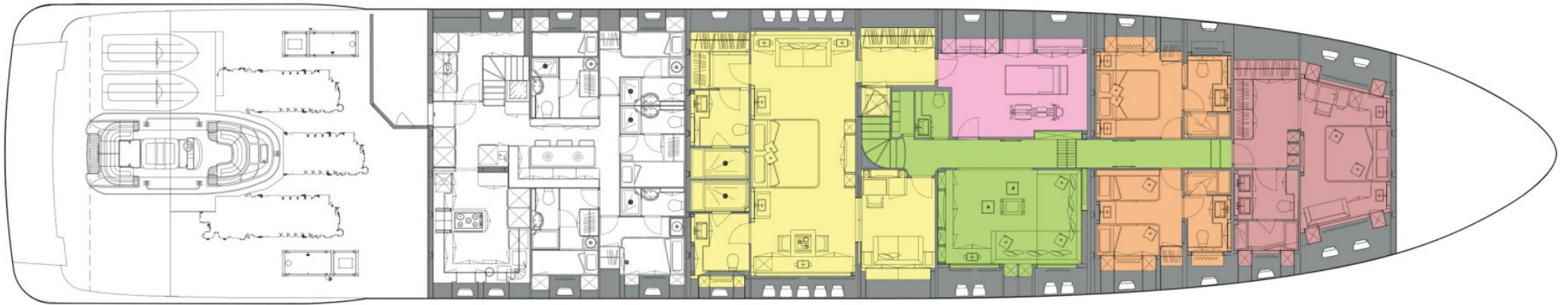


MAIN DECK



- GUEST AREAS
- MASTER SUITE
- VIP SUITE
- GUEST CABINS
- GYM

LOWER DECK



GUEST AREAS MASTER SUITE VIP SUITE GUEST CABINS GYM

BURGESS

WORLD CLASS. WORLD WIDE.

London +44 20 7766 4300	Monaco +377 97 97 81 21	New York +1 212 223 0410	Miami +1 305 672 0150	Singapore +65 9665 8990	Beverly Hills +1 310 424 5112	Palma +34 971 495 413	Athens +30 210 967 1661
	Dubai +971 4 425 5874	Phuket +66 7623 9739	Hong Kong +852 6496 2094	Tokyo +81 46 738 8612	Sydney +61 499 945 557	Mumbai +91 98211 67253	

La publicité de ce(s) navire(s) dans des publications imprimées, sur Internet ou sur tout autre support n'est pas autorisée sans l'autorisation écrite préalable de Burgess.
Toutes les informations sont données de bonne foi et sont considérées comme exactes, mais elles ne peuvent être garanties.

Dernière mise à jour : 29 février 2024