

ROMA



ROMA

APERÇU.

Designed by the highly acclaimed Norwegian architect Espen Oeino and built by the Italian yard Viareggio Superyachts, ROMA is a highly sought after yacht on the charter market with an exquisite interior designed by Katharina Raczek.

ROMA's bright cream and white colour palette creates an impressive feeling of space throughout. There are accents of deep red and gold which add character and elegance. Guests can marvel at the beautiful interior detailing such as the main lounge carpet which simulates sand on the sea bottom or the white Art Deco 3D laser cut panelling on the main staircase simulating sea shells. The large main lounge offers multiple seating options and a backlit onyx bar, circular dining for up to 12 and multiple coffee tables. One of her most impressive features on this deck is her on-board cinema / games room where the walls are ornamented with fibre optic stars!

ROMA's full beam sky lounge offers guests another social area to relax or play games on the games table. Outside, there is a second dining table with glass surround windbreaks and the magnificent sun deck offer multiple seating arrangements, adjustable sun pads for sunbathing, bar and a generous jet pool with adjustable current (perfect for a workout!). Furthermore, an air conditioned, well equipped gym ensures guests' every requirement is fulfilled.

Renewed in 2019, the full beam master cabin is immaculate. A king size bed and pull-out sofa look forward to panoramic sea views and there is a private working desk area, dressing area and spacious marble en suite. A further three guest cabins are beautifully appointed with champagne and cream tones; a fifth double cabin is located on the upper deck and a sixth convertible cabin is located on the lower deck, perfect for those seeking a little more privacy.

With an onboard PADI dive instructor, ROMA offers dive courses and supervision of activities to the very highest safety standard. It is therefore no surprise that ROMA holds a vast array of water toys. Included is a 16.8m chase boat, waverunners, jetskis, SeaBobs, a 27m water slide, a water trampoline and many more.

Principales caractéristiques

Wheelchair friendly

Spa facilities: licensed masseuse and beautician

Fully equipped gym

Elevator serving main to sun decks

PADI certified scuba dive yacht

18m Anvera chase tender

Child friendly yacht

Zero speed stabilisers to reduce any rolling motion while at anchor

ROMA

Aerial view



Sun deck forward pool



Cocktails



Media room



BURGESS

Discover the difference.
burgessyachts.com



ROMA

Masseuse



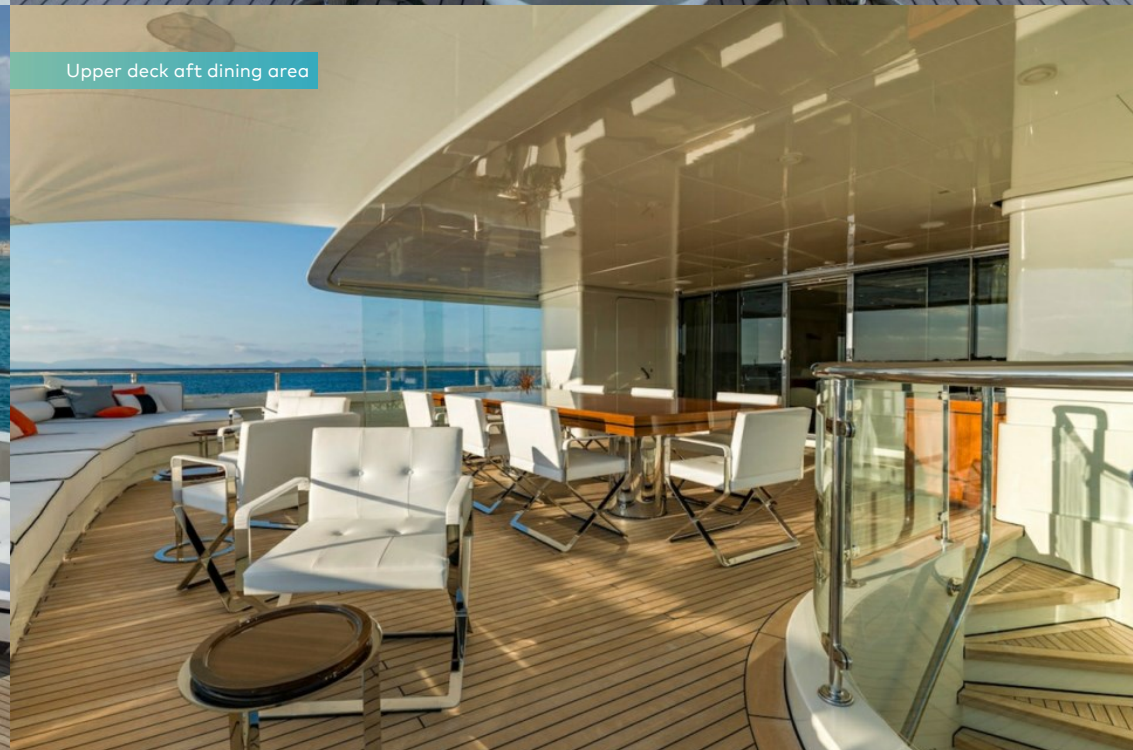
Sun deck aft dining area



Sun deck aft loungers



Upper deck aft dining area



BURGESS

Discover the difference.
burgessyachts.com



ROMA

Upper deck aft dining area



Main deck aft seating area



Main deck aft seating area



Main deck lounge



BURGESS

Discover the difference.
burgessyachts.com



ROMA

Main deck lounge



Main deck bar



Main deck dining area



Sky lounge



ROMA

Master cabin



Master cabin wardrobe



Master bathroom en suite



Double cabin



ROMA

Double cabin



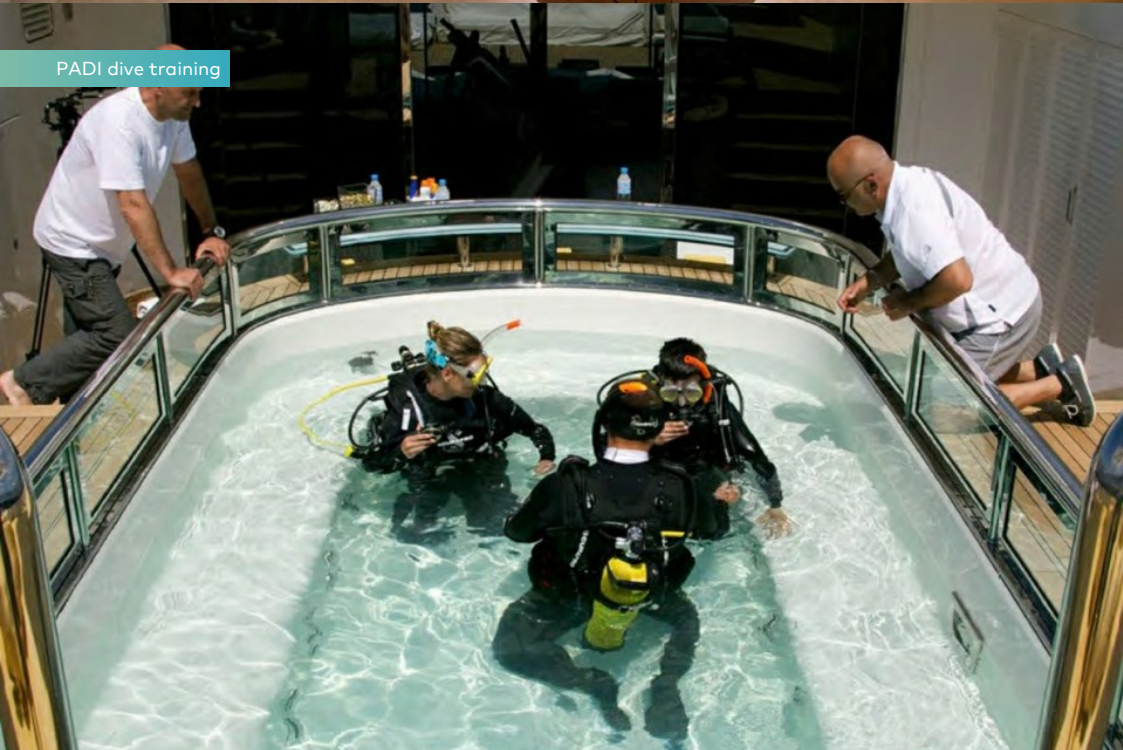
Twin cabin



Foyer



PADI dive training



ROMA

Swim platform



Toys



Chase tender



Waverunners



ROMA

Details



BURGESS

Discover the difference.
burgessyachts.com



ROMA

SPÉCIFICATIONS.



Longueur
62m



Chantier
2010 (refitted 2019), Viareggio Superyachts, Italy



Designer d'intérieur
Newcruise



Largeur
11m



Tirant d'eau
3,1m



Tonnage brut
1 090



Vitesse de croisière
14 knots



Vitesse maximale
17 knots



Consommation de carburant en vitesse de croisière
600 litres par heure



Moteurs
2 x 2 680hp Caterpillar



Invités
12



Nb de cabines invités
6 (5 x double, 1 x double/twin)



Équipage
18

Note

Fully licensed for charters in Spanish waters.

[Voir le yacht sur le site](#)

[Regarder la vidéo du yacht](#)



Annexes & jeux nautiques



1 x Towed tender



1 x Tender



Pool



Waterslide



Anti-jellyfish pool



Trampoline



RYA training centre for jetskis
& waverunners



3 x Waverunners



1 x Stand up jetski



3 x SeaBobs



2 x Flyboards



1 x Jetsurf



2 x eFoil



2 x Kayaks



4 x Stand up paddleboards



Windsurfer



Inflatable toys



Dive centre



Scuba diving equipment



Snorkelling gear

Remise en forme & bien-être



Boxing equipment



Cross trainer



Exercise balls



Free weights



Jump ropes



Resistance bands



Suspension trainer



Training bench



Treadmill



Upright stationary bike



Yoga instructor

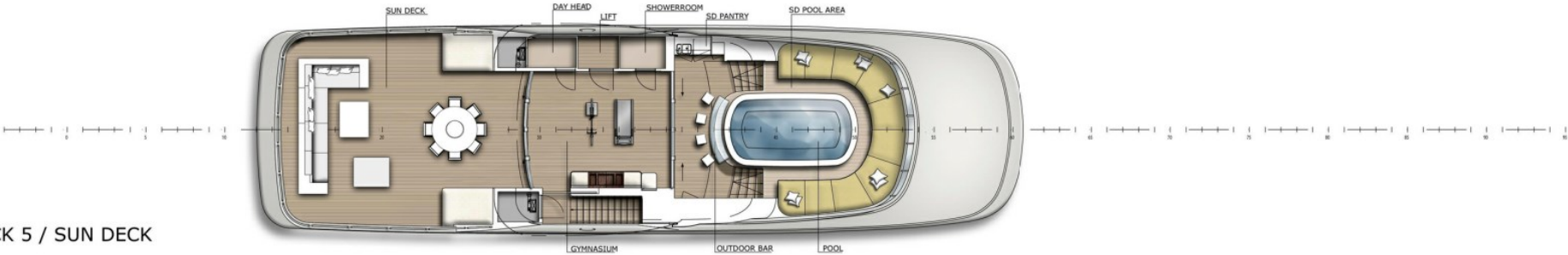


Yoga mats

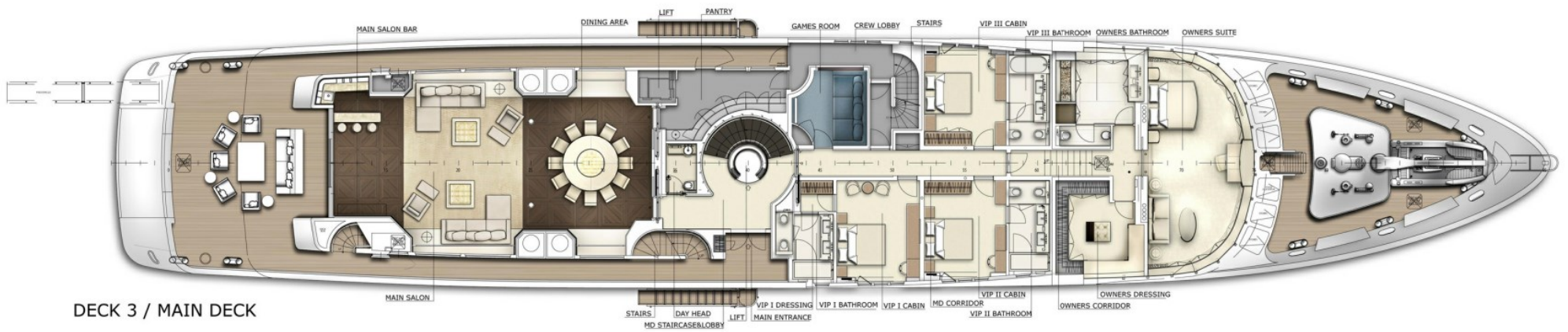


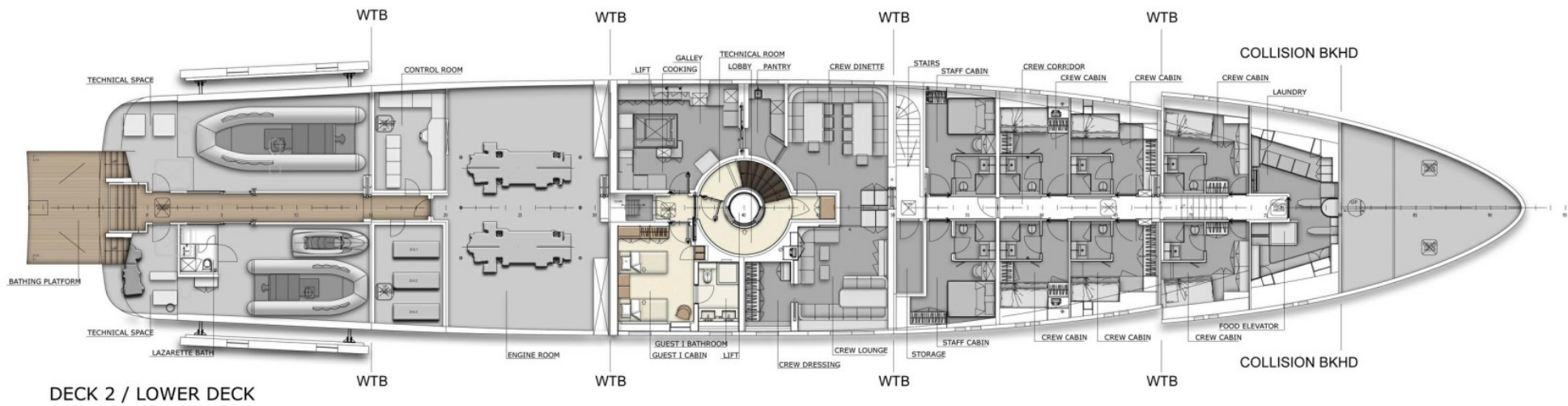
On board masseuse

DECK 5 / SUN DECK









BURGESS

WORLD CLASS. WORLD WIDE.

London +44 20 7766 4300	Monaco +377 97 97 81 21	New York +1 212 223 0410	Miami +1 305 672 0150	Singapore +65 9665 8990	Beverly Hills +1 310 424 5112	Palma +34 971 495 413	Athens +30 210 967 1661
	Dubai +971 4 425 5874	Phuket +66 7623 9739	Hong Kong +852 6496 2094	Tokyo +81 46 738 8612	Sydney +61 499 945 557	Mumbai +91 98211 67253	

La publicité de ce(s) navire(s) dans des publications imprimées, sur Internet ou sur tout autre support n'est pas autorisée sans l'autorisation écrite préalable de Burgess.
Toutes les informations sont données de bonne foi et sont considérées comme exactes, mais elles ne peuvent être garanties.

Dernière mise à jour : 26 mars 2024