

ROCKET



ROCKET

OVERVIEW.

The 49.8m (163.4ft) ROCKET, one of the highly successful Heesen 5000 series, was delivered by the renowned Dutch yard in 2011 to exterior designs by Omega Architects and interiors by Star Design. Refitted in 2021, she has been maintained to the highest standards ever since and received regular upgrades.

Her sun deck has a large jacuzzi forward flanked by sun pads and surrounded by glass screens. Aft, under skylights, is a genuine sky lounge with walk-up bar, picture windows and large sliding glass doors fore and aft, making it a wonderful place for dining under the sun or the stars in any weather.

To starboard of sun loungers on the sun deck aft, stairs lead down to the bridge deck aft where there is a large entertaining space, which can set up as an al fresco dining space for 12 or a convivial afternoon lounge with more seating aft. Sliding doors lead into a spectacular circular lounge with 270-degree views and a large TV with surround sound for movie nights, leading through to another entertaining space.

A magnificent statement staircase in chrome leads down to a backlit marble lobby on the main deck. Aft is the main lounge, a formal dining area and a cosy snug, leading through to another adaptable space on the aft deck, where steps lead down to the swim platform and its plethora of toys. Forward is the full-beam master suite, with his and hers bathroom with bath, a walk-in wardrobe, sofa to port and an office area to starboard.

Steps lead down to the guest lobby where there is a full-beam VIP suite, two double cabins and two twin cabins, completing versatile accommodation for 12 in six cabins.

Key features

2021 interior refit

Full beam master suite

Shaded deck dining & deck areas

Jacuzzi on the sun deck

Zero speed stabilisers

12m Wajer chase tender available

ROCKET

Exterior view



Sun deck



Main deck aft



Main deck aft



BURGESS

Discover the difference.
burgessyachts.com



ROCKET

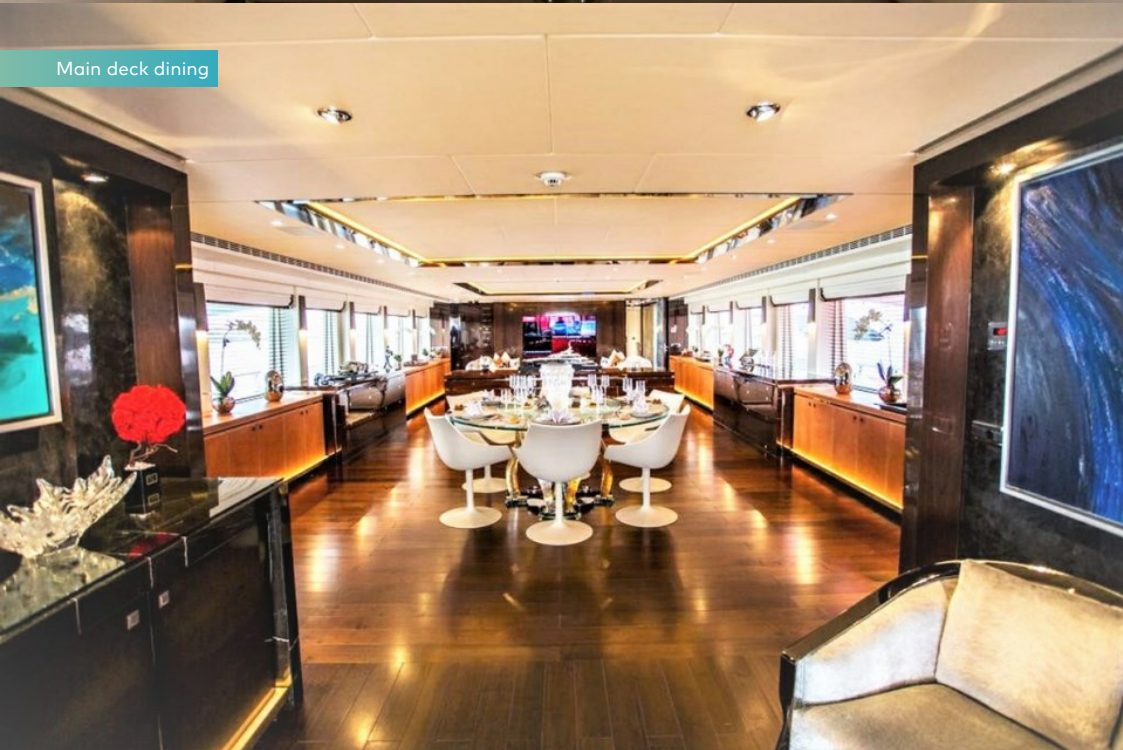
Main deck lounge



Main deck lounge



Main deck dining



Main deck lounge



ROCKET

Hallway stairs



Upper skylounge



Master cabin



Master cabin



ROCKET

SPECIFICATION.



Length
49.8m (163.3ft)



Built
2011 (refitted 2021), Heesen, The Netherlands



Interior designer
Star Design



Beam
9m (29.5ft)



Draft
2.6m (8.5ft)



Gross tonnage
499



Cruising speed
11 knots



Maximum speed
23 knots



Fuel consumption at cruising speed
250 litres per hour



Engines
2 x 3,650hp MTU



Guests
10



No. of guest cabins
6 (4 x double, 2 x twin)



Crew
12

Note

Registered under the Yacht Engaged in Trade scheme (YET). All Mediterranean charters must start in either the South of France, Monaco or Corsica. For all charters, the principal charterer must be a non-EU resident.

[View yacht on website](#)



Tenders & toys

-  1 x Towed tender
-  1 x Tender
-  1 x Deck jacuzzi
-  2 x Waverunners
-  2 x SeaBobs
-  Wakeboard
-  Waterskis
-  Inflatable toys

1 x 38ft Wajer chase boat (can be chartered for an additional €20,000 per week) | 1 x Tender – Pascoe / 7m / 12 Person / 2011 / 260hp | 2 x Jetskis (Sea-Doo RXT 260 RS) | 6 x E-Scooters | 2 x SeaBobs F5-S | Wakeboards | Waterskis | Inflatable toys | 3 x E-Bikes | 3 x Bikes

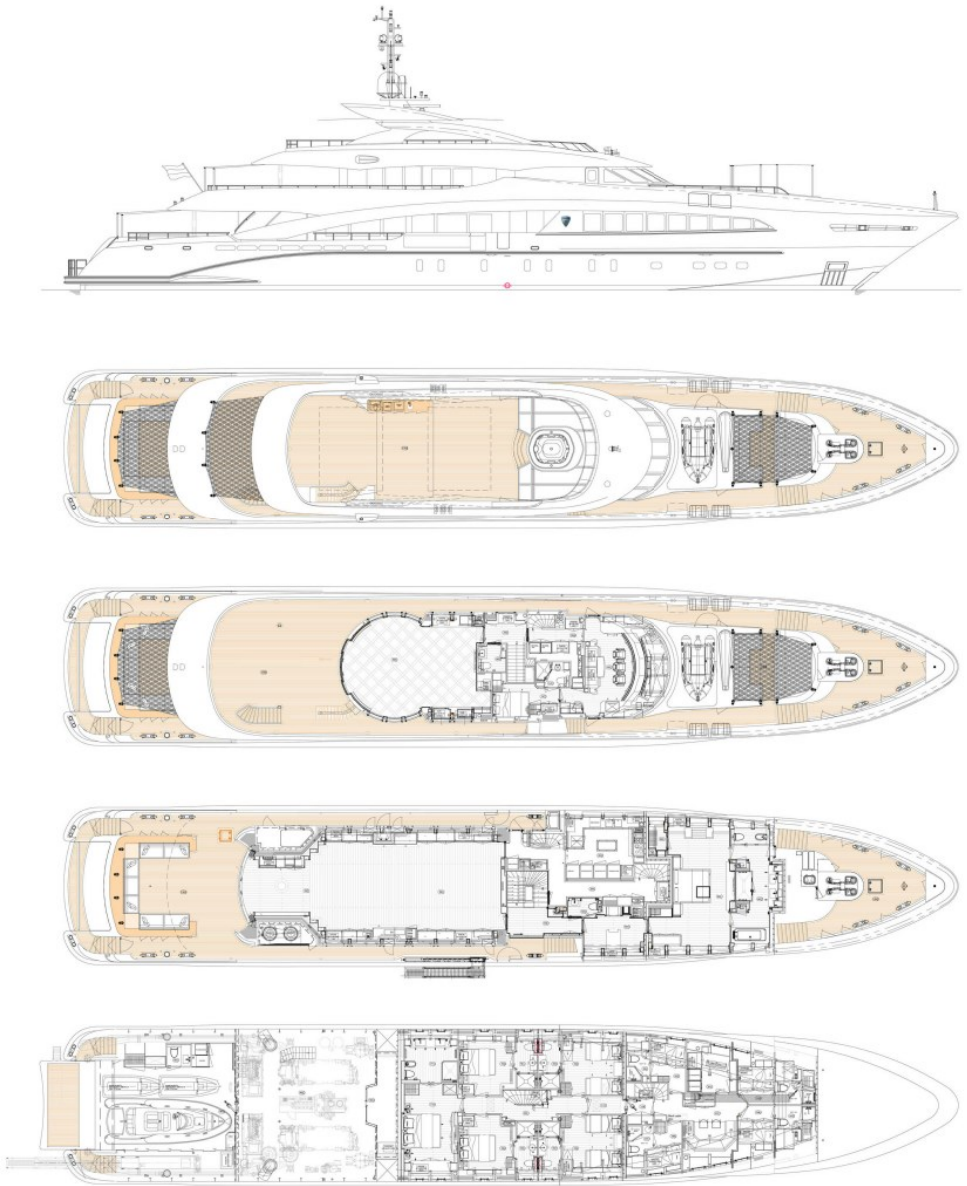
Fitness & wellness



Pedal bike

Communication & entertainment

State-of-the-art audio-visual systems | Satcom & cellular communications facilities | Wi-Fi internet access



BURGESS

WORLD CLASS. WORLD WIDE.

London +44 20 7766 4300	Monaco +377 97 97 81 21	New York +1 212 223 0410	Miami +1 305 672 0150	Singapore +65 9665 8990	Beverly Hills +1 310 424 5112	Palma +34 971 495 413	Athens +30 210 967 1661
Dubai +971 4 425 5874	Phuket +66 7623 9739	Hong Kong +852 6496 2094	Tokyo +81 46 738 8612	Sydney +61 499 945 557	Mumbai +91 98211 67253	Shanghai +86 187 0898 6800	

Advertising of these vessel(s) in printed publications, on the internet or in any other medium is not permitted without prior written permission from Burgess. All particulars are given in good faith and are believed correct but they cannot be guaranteed.

Last updated: 25 April 2024