

# RESILIENCE

---



RESILIENCE

# OVERVIEW.

**Delivered in 2021, this stunning yacht is newly on the charter market and excited to welcome guests aboard her luxuriously beautiful new spaces. RESILIENCE has all the amenities and more, including a large beach club with a bar, massage room, and steam room, a sundeck jacuzzi, a main deck pool, an outdoor cinema, a fully equipped gym, and copious watertoys, to deliver a fabulous charter experience**

RESILIENCE will surely become one of the most popular charter yachts on the market as with her many features, each and every guest is sure to have a smile on their face. Start your day by waking up in one of the beautifully appointed guest rooms featuring modern touches, a luxurious light color palette, and large windows allowing all rooms to feel airy and comfortable. Enjoy a coffee and croissant on one of the private master cabin balconies and take in the view of paradise. Head down to the beach club gym for a quick workout and a steam in the steamroom before heading to the main deck for a stunningly delicious breakfast.

Spend your morning lounging by the 6m x 2.3m pool or if you're feeling more adventurous, take a turn on the Flyboard to work up an appetite for lunch. The crew will find a secluded piece of paradise to set up a BBQ lunch. After a mouth-watering lunch, and beachgames, spend the rest of the afternoon enjoying the sparkling waters and hopping from the pool to the beach club and back. Grab an expertly crafted drink from the beach club bar and head up to the sun deck jacuzzi to enjoy the sunset with a panoramic view. After a decadent dinner perfected to your liking, head up to the bridge deck to watch a movie under the stars on the projector screen.

Simply, RESILIENCE is built to serve guests and treat everyone who steps aboard to an unforgettable luxury experience in paradise.

## Key features

---

**Spa facilities: massage room, steam room**

---

**Beach club at sea level**

---

**Balcony off of the master cabin**

---

**Private terrace off of the VIP**

---

**Outdoor cinema**

---

**Pool on the main deck aft**

---

**Jacuzzi on the sun deck**

---

**Zero speed stabilisers to reduce any rolling motion while at anchor**

---

RESILIENCE

Beach club



Sun deck



Bridge deck aft



Bridge deck aft



# RESILIENCE

Bridge deck aft outdoor cinema



Main deck aft pool



Beach club



Beach club

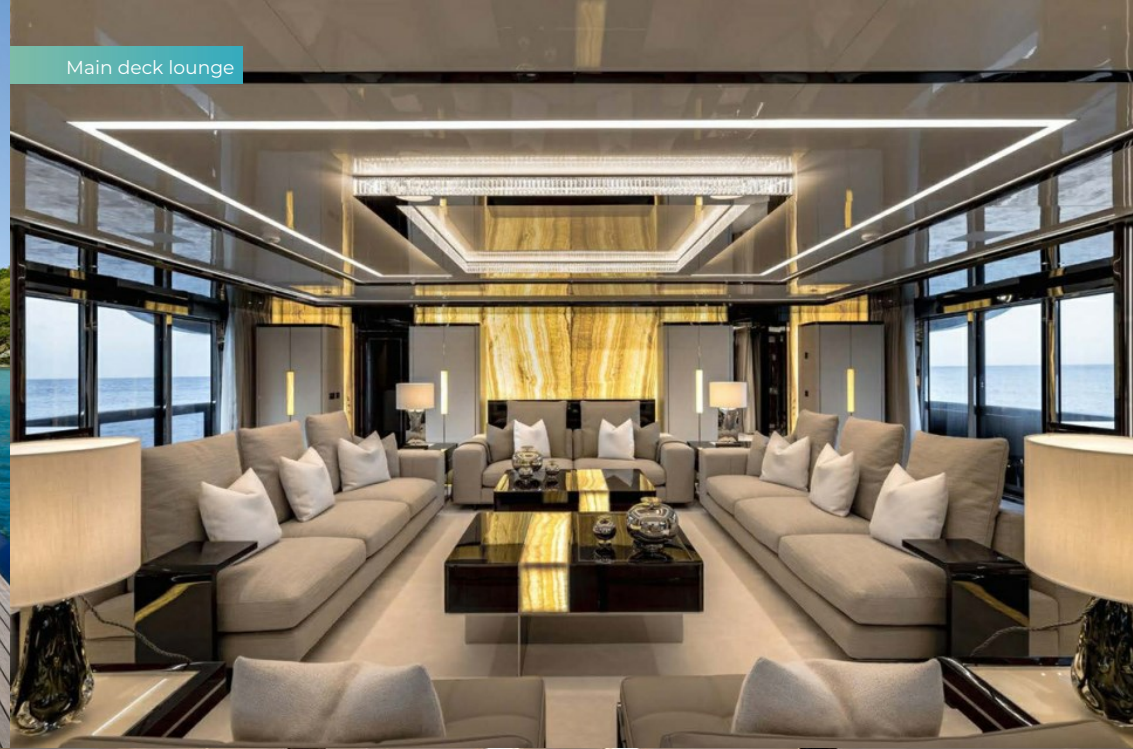


# RESILIENCE

Beach club gym



Main deck lounge



Main deck dining



Main deck dining



# RESILIENCE

Sky lounge



Sky lounge



Main deck master cabin



Main deck master cabin



## RESILIENCE

Master bathroom en suite



Master office



Bridge deck VIP cabin



Lower deck double cabin



# RESILIENCE

Lower deck double cabin



Lower deck double cabin



Lower deck convertible double/twin cabin



Massage room





# RESILIENCE

Beach set-up



# Lifestyle



## RESILIENCE

# SPECIFICATION.



Length  
**64.8m (212.4ft)**



Built  
**2021, ISA Yachts, Italy**



Interior designer  
**Team for Design**



Beam  
**12m (37.7ft)**



Draft  
**3.5m (11.5ft)**



Gross tonnage  
**1,401**



Cruising speed  
**11 knots**



Maximum speed  
**16 knots**



Fuel consumption at cruising speed  
**280 litres per hour**



Engines  
**2 x 2,012hp MTU**



Guests  
**12**



No. of guest cabins  
**8 (4 x double, 2 x double/twin, 2 x single)**



Crew  
**16**

### Note

Fully licensed for charters in Spanish waters.

[View yacht on website](#)

[Watch yacht video](#)



RESILIENCE

# TENDERS & TOYS



2 × Tenders



1 × Deck jacuzzi



Pool



Anti-jellyfish pool



RYA training centre for jetskis & waverunners



2 × Waverunners



2 × SeaBobs



1 × Flyboard



2 × Kayaks



2 × Stand up paddleboards



Wakeboard



Wakeskate



Kneeboard



Waterskis



Inflatable tows

RESILIENCE

# FITNESS & WELLNESS



Free weights



Multi gym



Rowing machine



Training bench



Hammam/Steam room

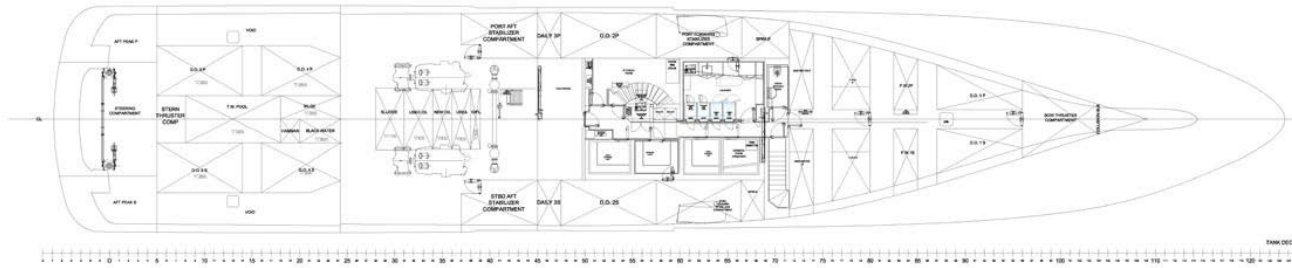
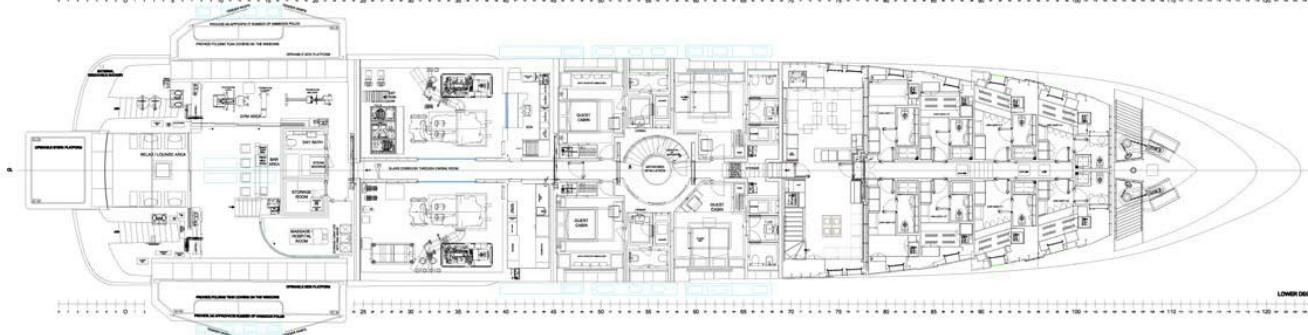
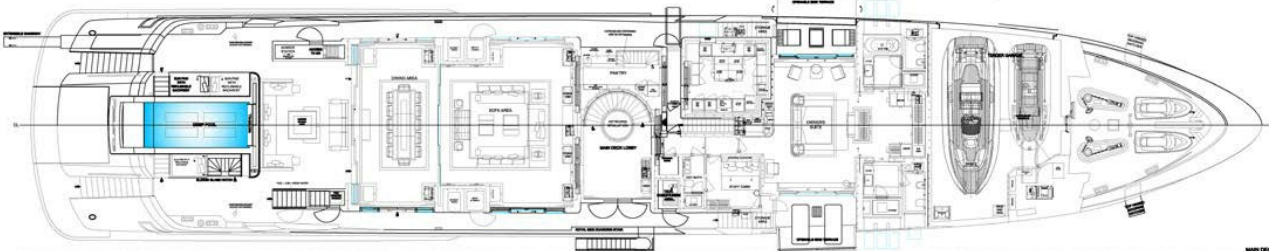
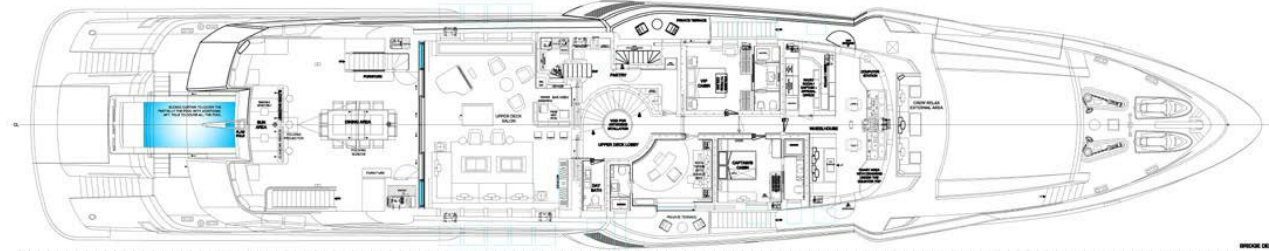


Massage room



On board masseuse





# BURGESS

# WORLD CLASS. WORLD WIDE.

<b>London</b> +44 20 7766 4300	<b>Monaco</b> +377 97 97 81 21	<b>New York</b> +1 212 223 0410	<b>Miami</b> +1 305 672 0150	<b>Singapore</b> +65 9665 8990	<b>Beverly Hills</b> +1 310 424 5112	<b>Palma</b> +34 971 495 413	<b>Athens</b> +30 210 967 1661
<b>Dubai</b> +971 4 425 5874	<b>Phuket</b> +66 7623 9739	<b>Hong Kong</b> +852 6496 2094	<b>Tokyo</b> +81 46 738 8612	<b>Sydney</b> +61 499 945 557	<b>Mumbai</b> +91 98211 67253	<b>Shanghai</b> +86 187 0898 6800	<b>Rio de Janeiro</b> +55 21 2553-3238
<b>Aspen</b> +1 970 710 2294							

Advertising of these vessel(s) in printed publications, on the internet or in any other medium is not permitted without prior written permission from Burgess. All particulars are given in good faith and are believed correct but they cannot be guaranteed.

Last updated: 08 January 2025