

R.M.F.



R.M.F.

APERÇU.

R.M.F. offers you and your guests a modern harmonious retreat. Relax with your guests in the heavenly beach club area and unwind watching the sunlight dance through the glass-bottomed swimming pool above. From here you can connect with the sea and your surroundings through the vast fold-down sea terraces and the lift-up transom, and watch your friends and family enjoying watersports and activities in the warm sea surrounding R.M.F.

The daytime social hub of R.M.F. is the swimming pool and poolside seating and sunpads. On the bridge deck, above, is the al fresco formal dining area and a spacious al fresco lounge. It doesn't stop there, the sun deck has both forward and aft al fresco lounge areas and sunpads. Between them, beneath a hardtop, is a wonderful wet bar and lounge space, enabling you to enjoy drinks from the bar in the shaded plush seating.

A 2023 refit has improved her charter credentials and maintained her just-launched feel. Her interior benefits from a stunning light and contemporary feel. Both the main saloon and sky lounge enjoy floor-to-ceiling windows that align with glass bulwarks that conspire to give you an amazing view of your surroundings wherever you're sitting. She has the option of converting the sky lounge to add a double VIP suite.

The main deck master suite is a haven of tranquillity. The full-beam suite is entered via the private office and lounge area. Ahead of a mirrored glass wall is a full-beam en suite bathroom featuring a picture window in the shower room. The stylish guest accommodation, on the lower deck, consists of two double suites and two twin/double convertible suites. This offers a versatile and practical sleeping arrangement whether you're cruising with family or friends.

R.M.F.'s dedicated crew will look after you and your guest's needs, ensuring your stay is a dream-like experience, from guidance using the collection of watersports equipment to being on hand to tend to your party's needs. Dining on board is no less impressive. Her professional chef is on hand to create culinary delights and memorable dining experiences.

Along with the suites and lounges, there is a gym, steam room and sauna dedicated to your well-being. If onboard amenities weren't enough, R.M.F. has a 14.5m (47ft) chase boat, a 7m (23ft) tender and a plethora of toys, towables and boards to make the most of during your stay on board this lavish yacht.

Principales caractéristiques

Spa facilities: massage room

Beach club at sea level

Flexible cabin configurations

A fully equipped gym

14.1m Sacs Rebel chase tender

Shaded deck dining and deck areas

Pool on the main deck aft

Zero speed stabilisers to reduce any rolling motion while at anchor

R.M.F.

Aerial view



Sun deck



Sun deck



Sun deck

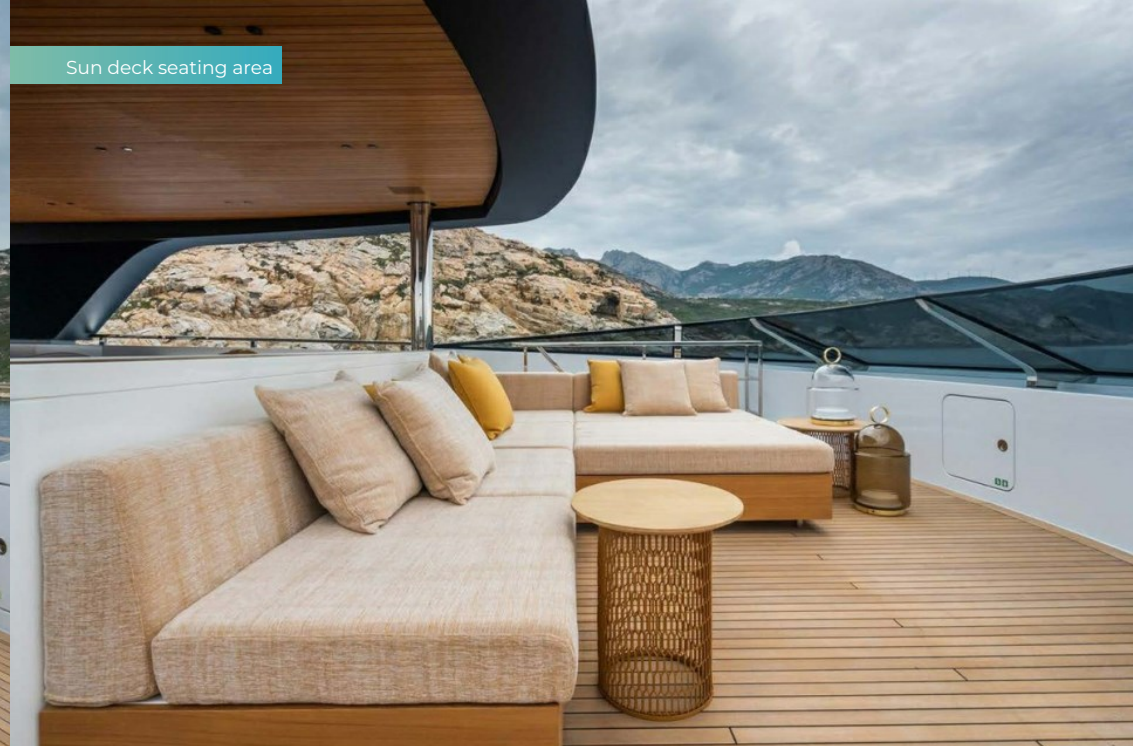


R.M.F.

Sun deck lounge



Sun deck seating area



Upper deck



Upper deck dining area



R.M.F.

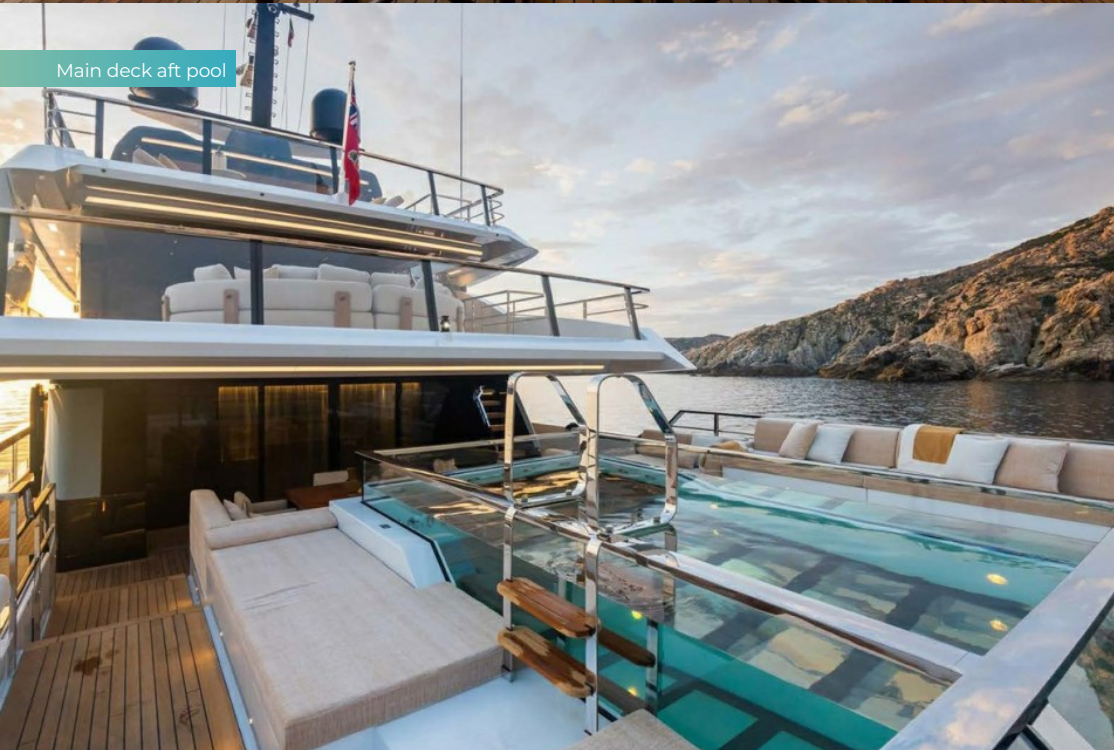
Upper deck dining area



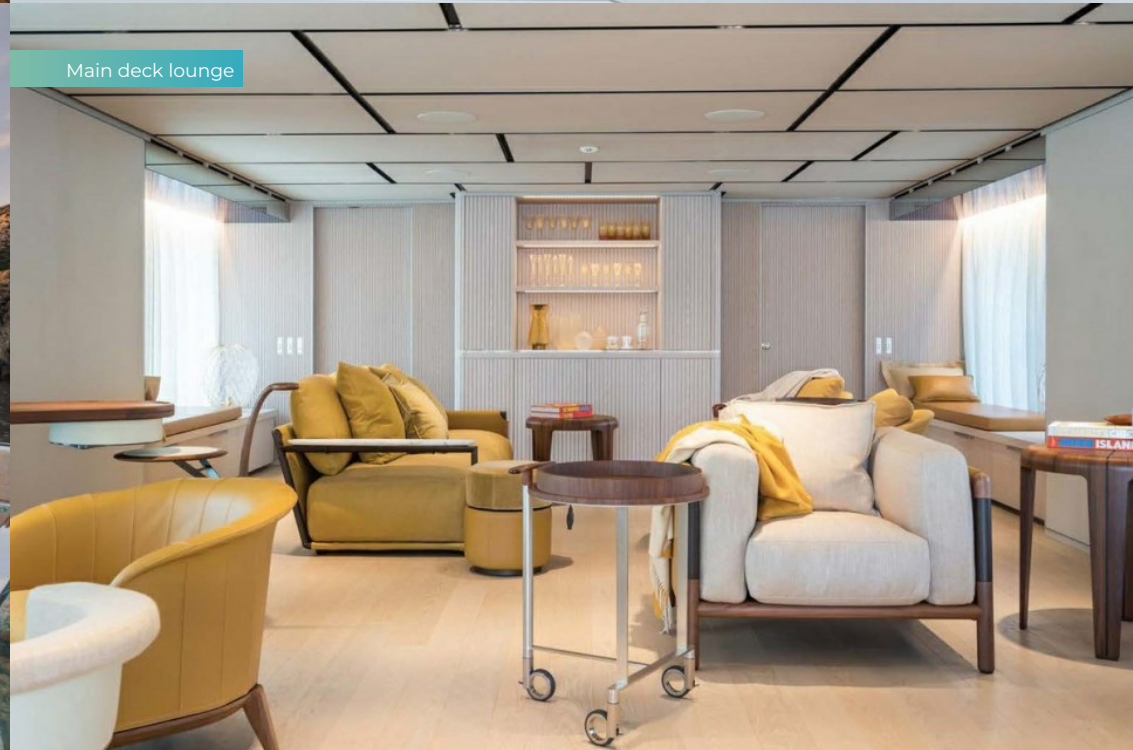
Main deck aft pool



Main deck aft pool



Main deck lounge



R.M.F.

Main deck lounge



Main deck lounge



Sky lounge



Main deck master cabin



R.M.F.

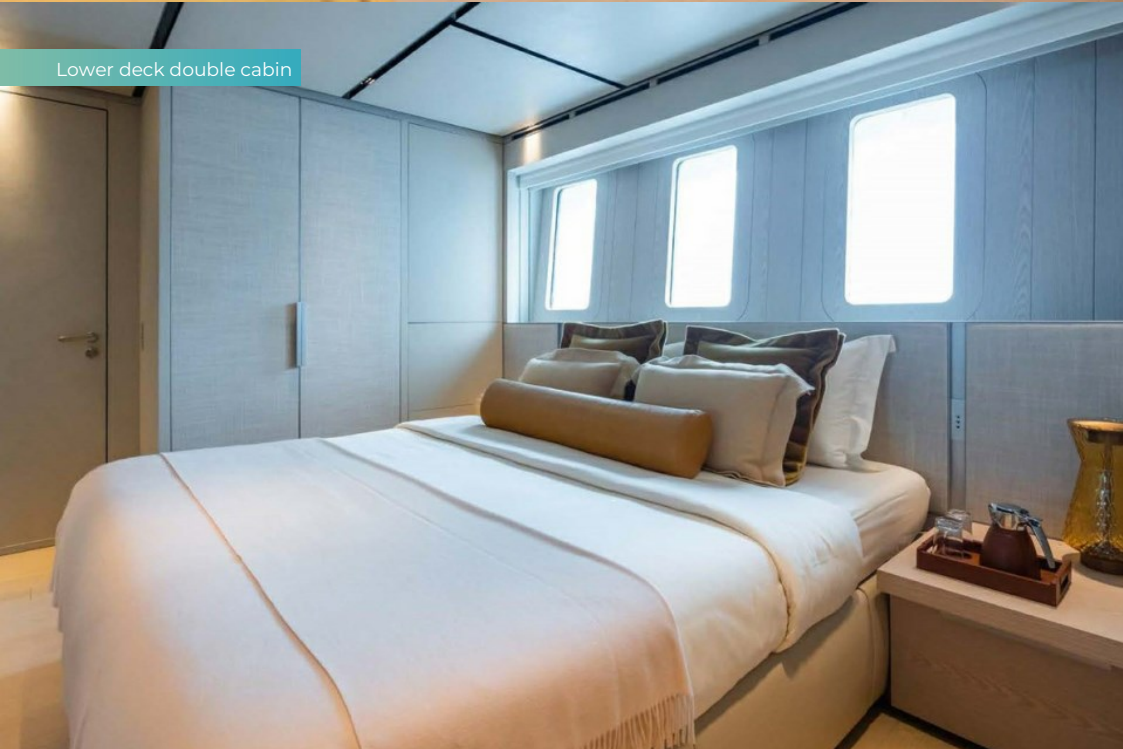
Main deck master cabin



Master bathroom en suite



Lower deck double cabin



Lower deck double cabin



R.M.F.

Guest bathroom en suite



Lower deck convertible double/twin cabin



SeaBob



Chase tender



R.M.F.

Aerial view



Aerial view



Cruising



Aerial view



BURGESS

Discover the difference.
burgessyachts.com



R.M.F.

SPECIFICATIONS.



Longueur
52m



Chantier
2022, Sanlorenzo, Italy



Designer d'intérieur
Officina Italiana Design



Largeur
9,4m



Tirant d'eau
2,8m



Tonnage brut
499



Vitesse de croisière
12 knots



Vitesse maximale
16 knots



Consommation de carburant en vitesse de croisière
300 litres par heure



Moteurs
2 x 2 400hp Caterpillar



Invités
10



Nb de cabines invités
5 (3 x double, 2 x double/twin, 2 x additional berths)



Équipage
12

[Voir le yacht sur le site](#)
[Regarder la vidéo du yacht](#)



R.M.F.

ANNEXES & JEUX NAUTIQUES



1 x Towed tender



2 x Tenders



Pool



2 x Waverunners



2 x SeaBobs



2 x Kayaks



2 x Stand up paddleboards



Wakeboard



Waterskis



Inflatable platform



Waterslide



Inflatable toys



Snorkelling gear

R.M.F.

REMISE EN FORME & BIEN-ETRE



Free weights



Kinesis machine



Training bench



Treadmill



Upright stationary bike



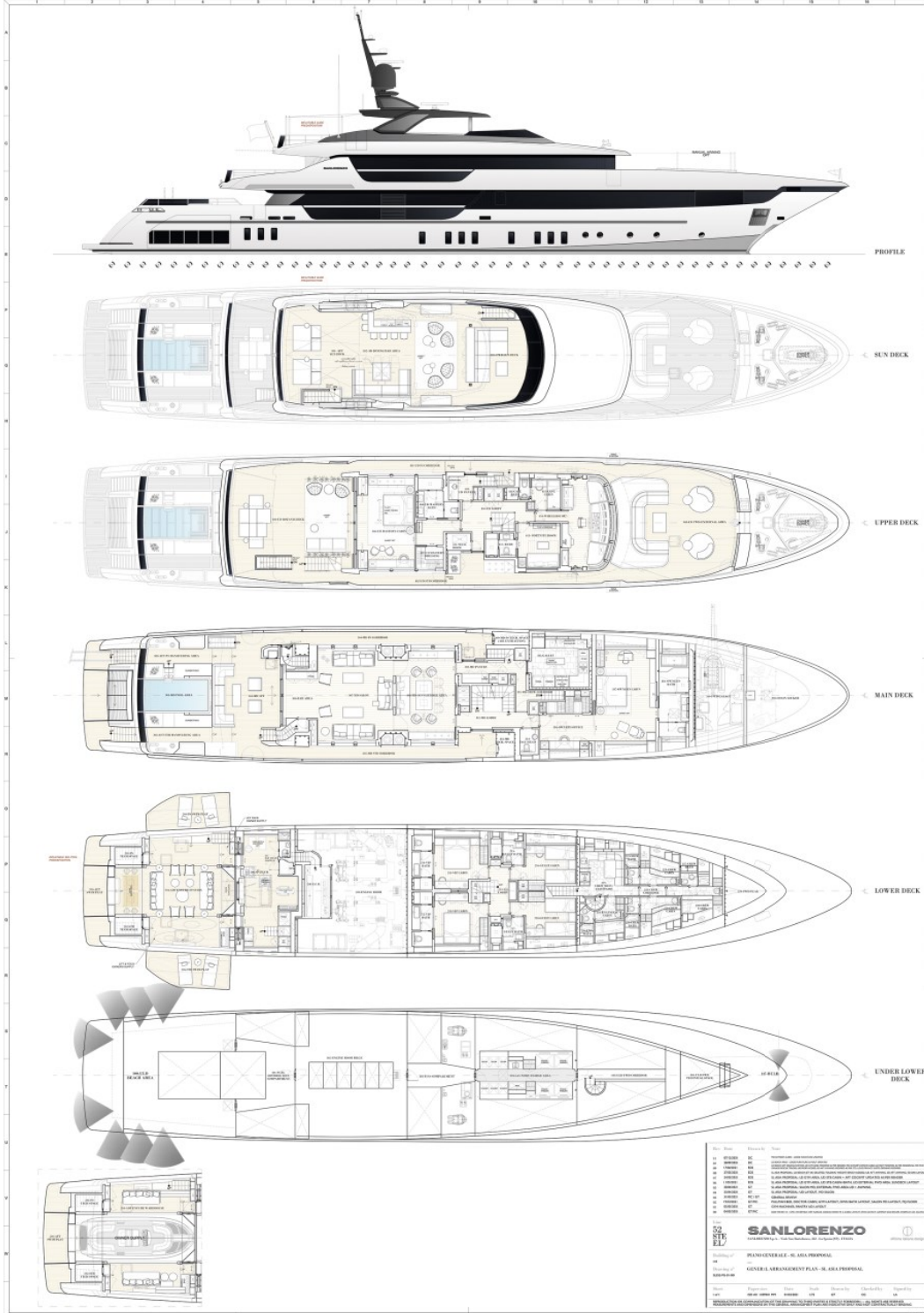
Yoga mats



Hammam/Steam room



Sauna



BURGESS

WORLD CLASS. WORLD WIDE.

London +44 20 7766 4300	Monaco +377 97 97 81 21	New York +1 212 223 0410	Miami +1 305 672 0150	Singapore +65 9665 8990	Beverly Hills +1 310 424 5112	Palma +34 971 495 413	Athens +30 210 967 1661
Dubai +971 4 425 5874	Phuket +66 7623 9739	Hong Kong +852 6496 2094	Tokyo +81 46 738 8612	Sydney +61 499 945 557	Mumbai +91 98211 67253	Shanghai +86 187 0898 6800	Rio de Janeiro +55 21 2553-3238
Aspen +1 970 710 2294							

La publicité de ce(s) navire(s) dans des publications imprimées, sur Internet ou sur tout autre support n'est pas autorisée sans l'autorisation écrite préalable de Burgess.
Toutes les informations sont données de bonne foi et sont considérées comme exactes, mais elles ne peuvent être garanties.

Dernière mise à jour : 13 février 2025