

PROJECT FUEGO



PROJECT FUEGO

SPECIFICATION.



Asking price
Price on application



Built
2024, To Be Decided



Length
70m (229.6ft)



Beam
12.2m (40ft)



Draft
3.8m (12.5ft)



Gross tonnage
1,800



Maximum speed
16 knots



Exterior designer
Harrison Eidsgaard



Interior designer
Harrison Eidsgaard



Construction
Hull - Steel, Superstructure - Aluminium



Crew
19



Guests
14



Cabins
7 (6 × double, 1 × twin)

[View yacht on website](#)

[Watch yacht video](#)



PROJECT FUEGO



BURGESS

Discover the difference.
burgessyachts.com



PROJECT FUEGO



BURGESS

Discover the difference.
burgessyachts.com



OVERVIEW.

The 70m (229.6ft) PROJECT FUEGO is a unique new build project designed by Harrison Eidsgaard with Burgess as commercial and build consultants.

The platform itself has largely been predesigned to save build time and costs, and engineers out a lot of the risks sometimes encountered by a full custom project. It does, however, retain many exterior and interior design options to ensure extensive owner customisation. This yacht will be yours and yours alone.

The huge three tiered sun deck features a 6m pool, with skylight allowing light into the stairwell atrium below, and open air dining and a bar on the central section. Forward there are raised sunpads, allowing space for the wheelhouse below, and aft is a large sun lounge.

The owner's deck offers huge opportunities for personalisation. The owner's stateroom, with study and breakfast area, can be forward below a vast skylight with access to a private lounge area and terrace on the foredeck, which is also a touch and go helipad. Aft is a sky lounge with bar opening onto a large private terrace aft. A second option has the owner's stateroom facing overlooking a private terrace, forward is an observation lounge with formal dining and a study that can be closed off. The foredeck has the same lounge, terrace and helipad configuration.

The main deck has two VIP cabins forward, each with its own balcony, aft is a main saloon with formal dining area and large glass sliding doors opening onto an open air dining area with a large sun lounge aft. Forward behind shell doors on the main deck is storage for toys and tenders up to 9m (29.5ft) in length.

On the lower deck there are two double cabins and two twin cabins, completing accommodation for 14 in seven suites. She also accommodates up to 19 crew. From the lower deck guest suites there is step free access to the dedicated gym, wellness centre with hammam and sauna, dayhead and a beach club with lounge. Steps lead up to a remarkably large swim platform.

Key features

Huge split level sun deck with large pool, bar, dining and lounging area

Dedicated owner's deck with expansive aft and forward facing deck spaces

incredible ceiling heights throughout the interior and exterior spaces

Clever use of windbreaks on the aft decks

Sumptuous guest cabins on the main deck with vast windows providing panoramic views

Fully equipped beach club, gym and spa

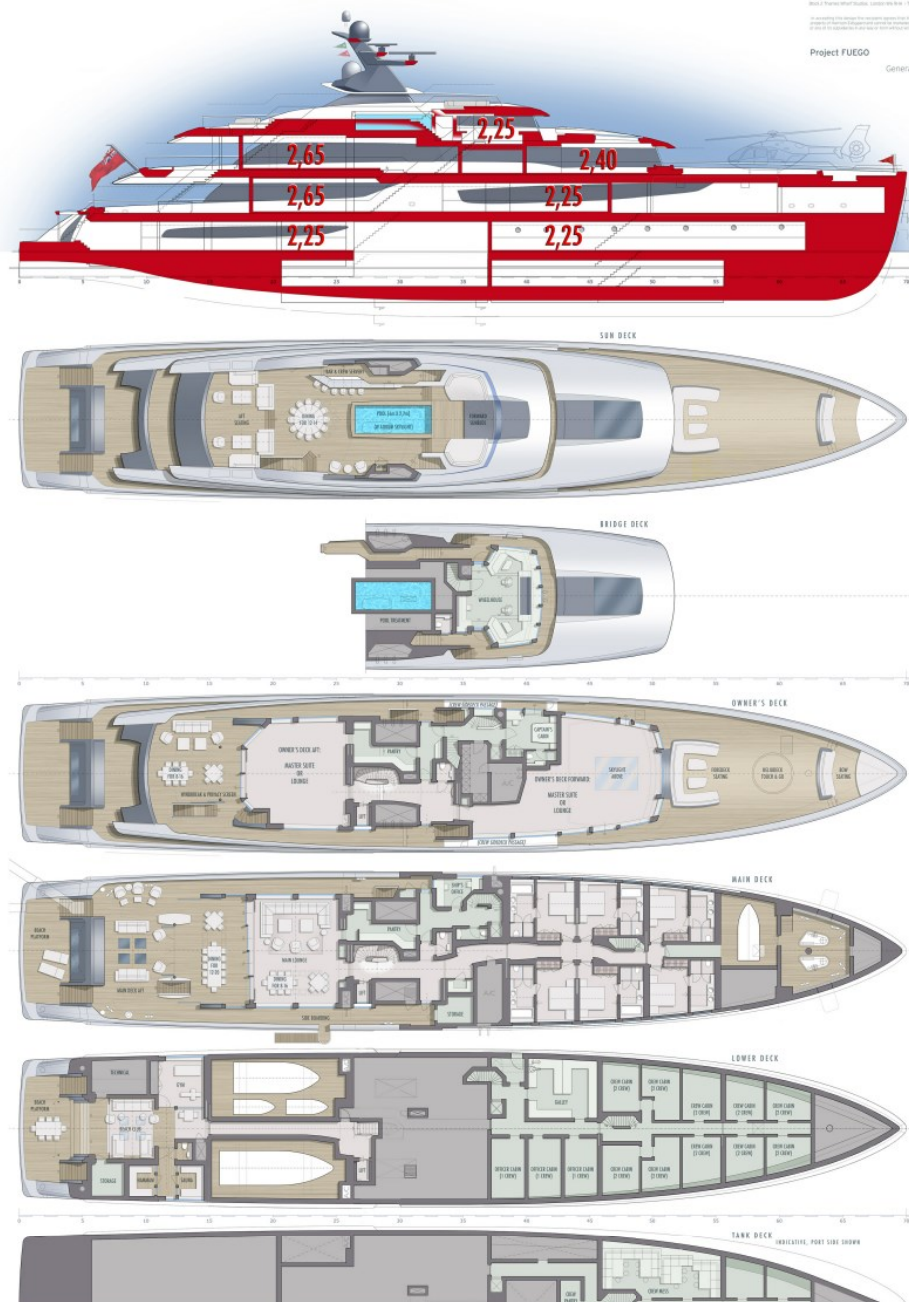
PROJECT FUEGO deck plan option 1

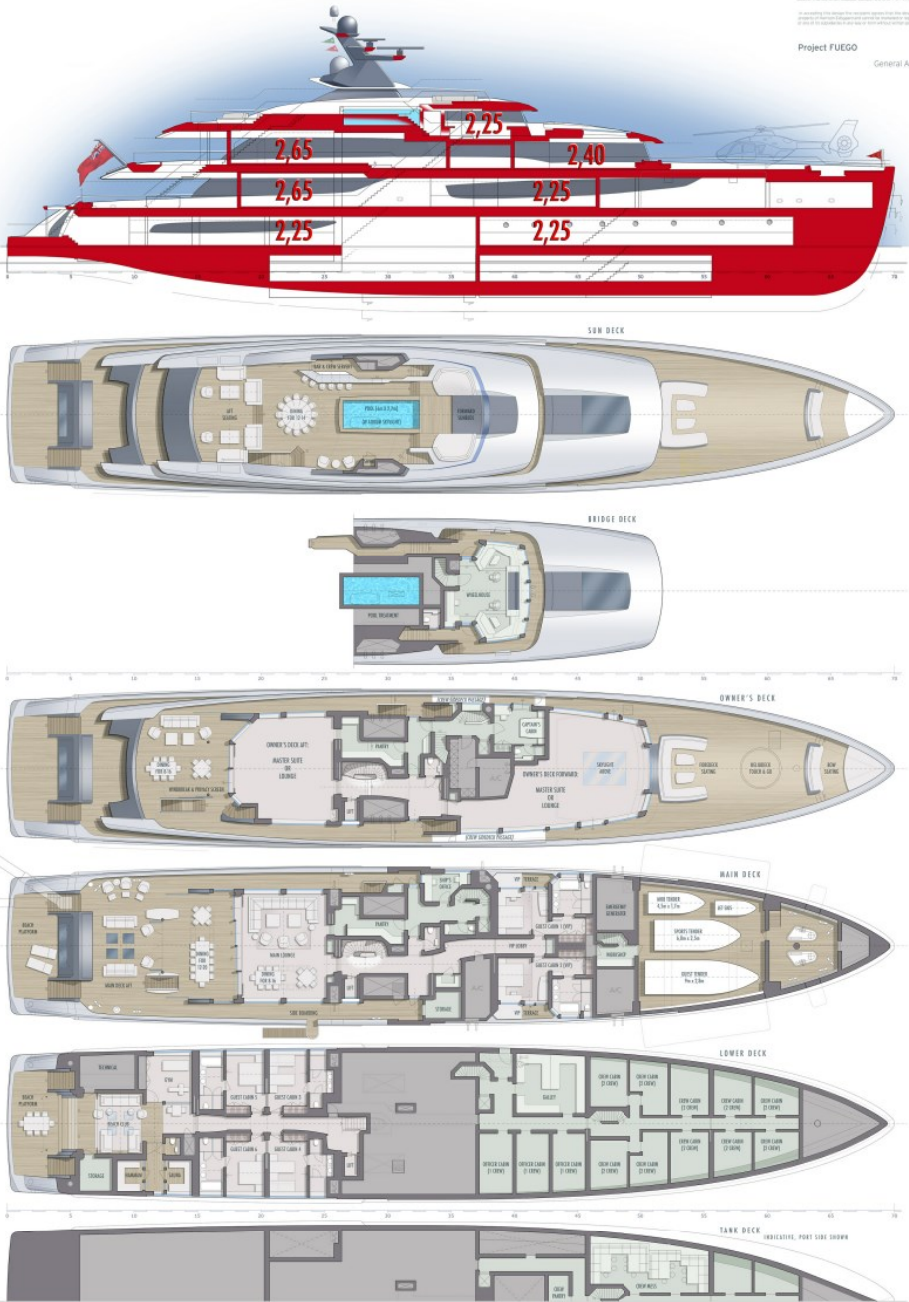
© 2012 F. Thomas Wall Studios, London NW 10 • T: +44 (0)20 7380 371 • info@ftws.com

By accepting this design the recipient agrees that the design and its characteristics are the property of F. Thomas Wall Studios and cannot be imitated or reproduced or copied in the respect of one of its attributes in any way or form without written permission from F. Thomas Wall Studios

Project FUEGO

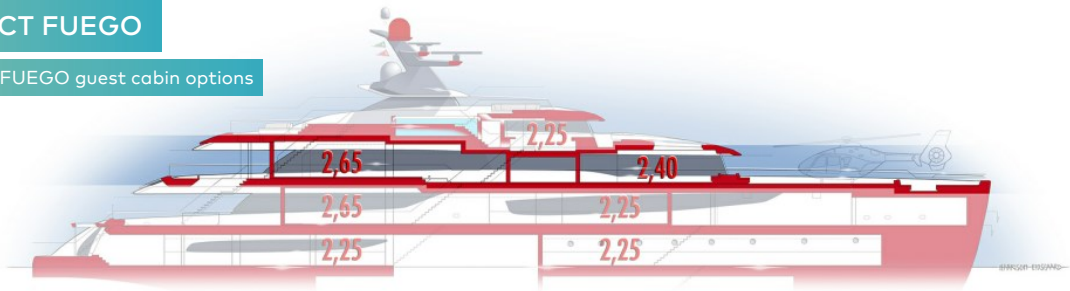
General Arrangement Plan





PROJECT FUEGO

PROJECT FUEGO guest cabin options



HARRISON
EIDSGAARD

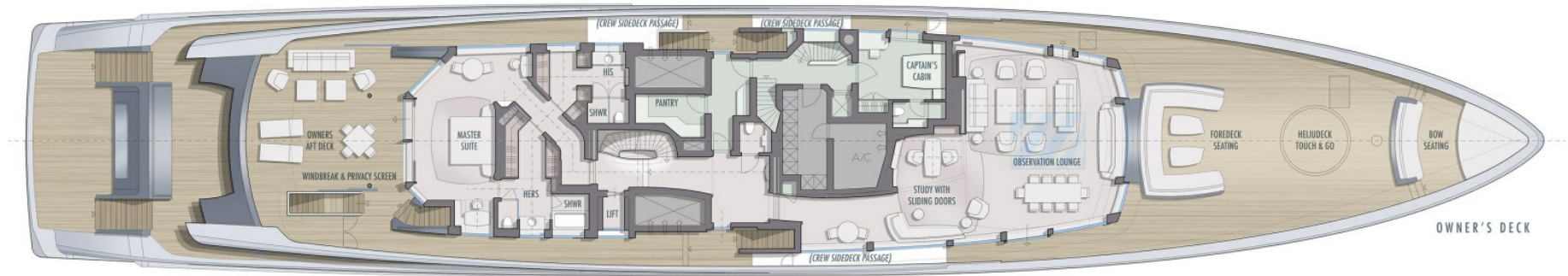
Block 2 Thames Wharf Studios, London W6 9HA • T: +44 (0) 20 7388 3071 • eidsgaard.com

In accepting this design the recipient agrees that the design and its characteristics is the property of Harrison Eidsgaard and cannot be marketed or reproduced or copied by the recipient or any of it's subsidiaries in any way or form without written permission from Harrison Eidsgaard.

Project FUEGO
Owner's deck layout alternatives



OWNER'S DECK - OPTION A:
LOUNGE AFT / STUDY NEAR CENTRE / MASTER SUITE FORWARD



OWNER'S DECK - OPTION B:
MASTER SUITE AFT / STUDY NEAR CENTRE / LOUNGE FORWARD



PROJECT FUEGO

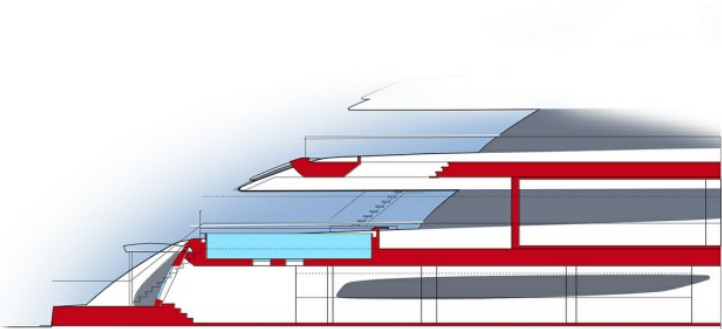
PROJECT FUEGO pool options

HARRISON
EIDSGAARD

Block 2 Thames Wharf Studios, London W6 9HA • T: +44 (0) 20 7388 3071 • eidsgaard.com

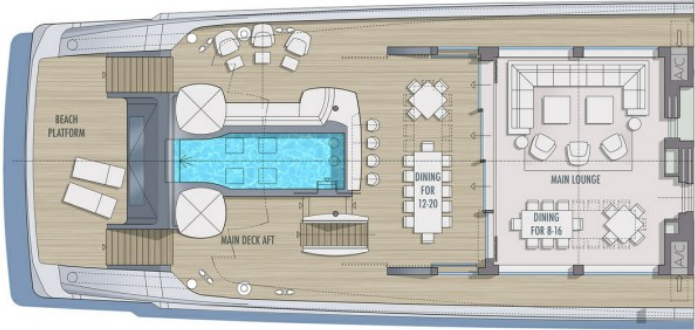
In accepting this design the recipient agrees that the design and its characteristics is the property of Harrison Eidsgaard and cannot be marketed or reproduced or copied by the recipient or any of it's subsidiaries in any way or form without written permission from Harrison Eidsgaard.

Project FUEGO
Main Deck & Sun Deck layout alternatives

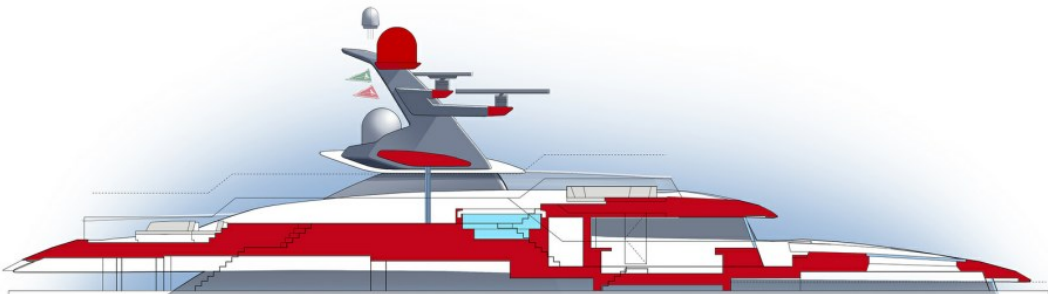


MAIN DECK OPTION:
POOL WITH INTEGRATED BAR AND SEATING

0 5 10 15 20 25

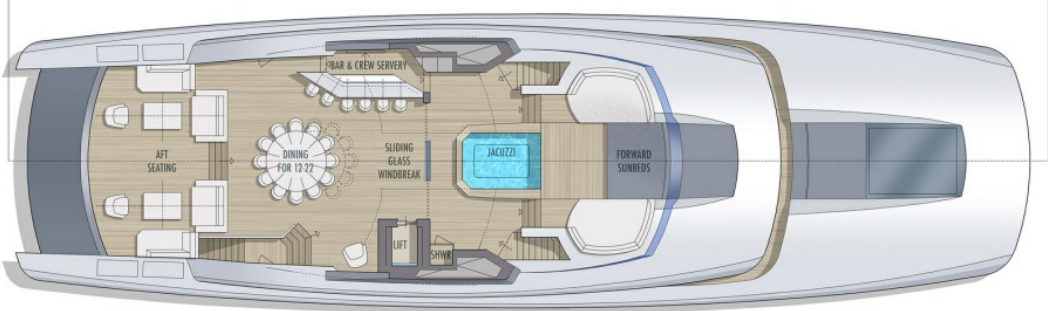


MAIN DECK



SUN DECK OPTIONS:
GUEST LIFT EXTENDS TO SUN DECK LEVEL / JACUZZI REPLACES POOL / INCLUSION OF WIND BREAK GLASS WALL

15 20 25 30 35 40 45 50



SUN DECK

BURGESS

WORLD CLASS. WORLD WIDE.

London +44 20 7766 4300	Monaco +377 97 97 81 21	New York +1 212 223 0410	Miami +1 305 672 0150	Singapore +65 9665 8990	Beverly Hills +1 310 424 5112	Palma +34 971 495 413	Athens +30 210 967 1661
	Dubai +971 4 425 5874	Phuket +66 7623 9739	Hong Kong +852 6496 2094	Tokyo +81 46 738 8612	Sydney +61 499 945 557	Mumbai +91 98211 67253	

Advertising of these vessel(s) in printed publications, on the internet or in any other medium is not permitted without prior written permission from Burgess. All particulars are given in good faith and are believed correct but they cannot be guaranteed.

Last updated: 01 March 2024