

# PROJECT 515

---



PROJECT 515

# SPÉCIFICATIONS.



Prix demandé  
Price on application



Chantier  
2026, Burger, United States Of America



Longueur  
54,9m



Largeur  
10m



Tirant d'eau  
2,4m



Tonnage brut  
499



Vitesse de croisière  
11 knots



Vitesse maximale  
17 knots



Autonomie  
4 000 nm



Position  
Under construction



Classe  
ABS



Designer extérieur  
Burger Boat Company/Gregory C Marshall Naval Architects



Designer d'intérieur  
Burger Boat Company



Construction  
Hull - Aluminium, Superstructure - Aluminium



Équipage  
14



Invités  
14



Cabines  
6 (4 x double, 2 x double/twin, 2 x additional berths)



Moteurs  
2 x 2 366hp Caterpillar



Propulsion  
Twin screw diesel yacht

[Voir le yacht sur le site](#)





PROJECT 515



BURGESS

Discover the difference.  
burgessyachts.com



PROJECT 515



BURGESS

Discover the difference.  
[burgessyachts.com](http://burgessyachts.com)



PROJECT 515



BURGESS

Discover the difference.  
burgessyachts.com



# APERÇU.

Embark on a journey of unparalleled luxury and sophistication with Burger's PROJECT 515, the second Burger 180 currently in build at Burger's shipyard in the United States. Crafted with meticulous attention to detail and designed to exceed your every expectation, this magnificent vessel promises an unforgettable yachting experience like no other.

Step aboard and discover a world of indulgence and comfort, where every detail has been carefully considered to ensure your utmost satisfaction. With six staterooms, including a lavish full-beam Owner's Stateroom and five exquisite Guest Staterooms, the yacht offers ample space for you and your guests to relax and unwind in style.

Luxury knows no bounds aboard PROJECT 515, with features such as a starboard side balcony in the Owner's Stateroom, offering breathtaking views of the surrounding seascape. The professionally designed commercial galley provides seamless service, with direct access to the sky lounge service pantry for added convenience.

Accessibility is paramount, with a handicap-accessible elevator servicing all four decks, ensuring that every guest can experience the ultimate in comfort and convenience. The flexible interior décor allows you to customize your yacht to suit your unique tastes, whether you choose your own designer or opt for an interior designed by the renowned De Basto Designs or Patrick Knowles Design.

Designed to maximize natural light and offer stunning panoramic views, the Burger 55m Motor Yacht features large windows throughout, creating an ambiance of spaciousness and tranquillity. The large windows in each crew stateroom ensure that even below deck, natural light abounds, creating a welcoming and inviting atmosphere.

Entertainment and relaxation are paramount aboard the Burger 55m Motor Yacht, with features such as the large aft deck Winter Garden, perfect for intimate dining experiences. The Infinity Deck aft, complete with a pool, provides easy access to the sea and offers expansive views of the surrounding landscape.

## Principales caractéristiques

---

**Flexible interior décor with options for your own designer**

---

**Built-in starboard side balcony in Owner's Stateroom**

---

**Large windows throughout provide ample sunlight**

---

**Wheelchair accessible guest elevator servicing all four decks**

---

**Massive 720 GT of usable space**

---

**Optional Naiad Dynamics Total Ride Control System for additional comfort while at sea**

---

**Last opportunity for a new build with a Tier II compliant engine room**

---

**Custom built in the USA**

---

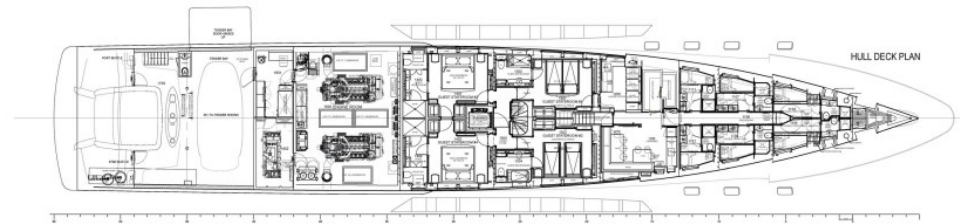
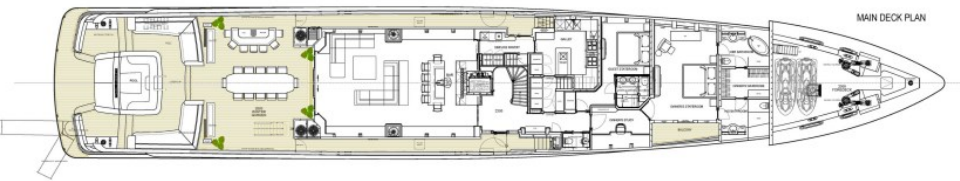
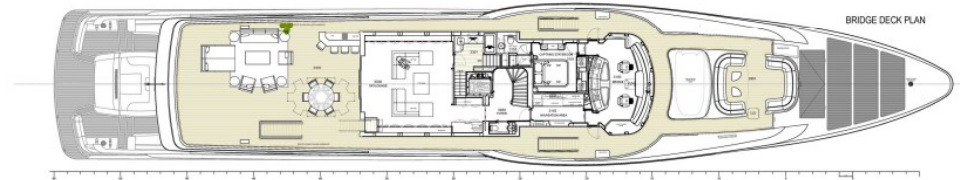
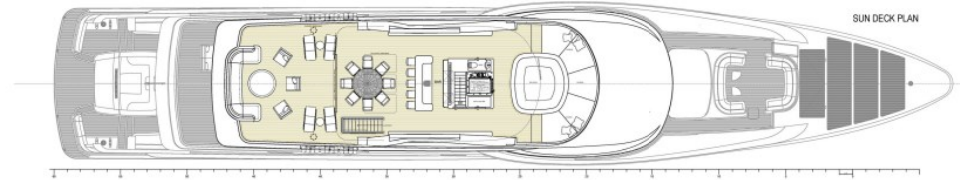
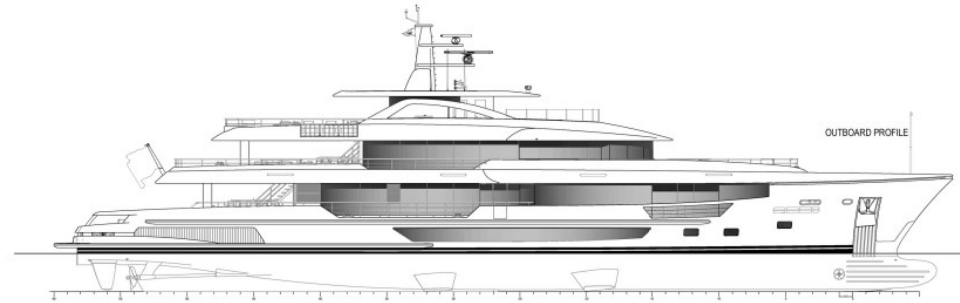
## Annexes

---

1 x 7m DieselJet, 1 x Rescue Tender

55m MOTOR YACHT - HULL 515

NOTE: NOT ALL DETAILS ARE FULLY RESOLVED AND MAY CHANGE SLIGHTLY THROUGH FABRICATION DESIGN DEVELOPMENT. FINAL ARRANGEMENT MAY DIFFER IN SHAPE AND DETAILS TO ENSURE VESSEL IS LESS THAN 500GT



SCALE: 1:125 (MAIN)  
SCALE: 1:125 (HULL)  
DATE: March 13, 2024 Rev: 0



# BURGESS

# WORLD CLASS. WORLD WIDE.

London +44 20 7766 4300	Monaco +377 97 97 81 21	New York +1 212 223 0410	Miami +1 305 672 0150	Singapore +65 9665 8990	Beverly Hills +1 310 424 5112	Palma +34 971 495 413	Athens +30 210 967 1661
	Dubai +971 4 425 5874	Phuket +66 7623 9739	Hong Kong +852 6496 2094	Tokyo +81 46 738 8612	Sydney +61 499 945 557	Mumbai +91 98211 67253	

La publicité de ce(s) navire(s) dans des publications imprimées, sur Internet ou sur tout autre support n'est pas autorisée sans l'autorisation écrite préalable de Burgess.  
Toutes les informations sont données de bonne foi et sont considérées comme exactes, mais elles ne peuvent être garanties.

Dernière mise à jour : 18 mars 2024