

PRINCESS L



PRINCESS L

SPECIFICATIONS.



Prix demandé
EUR 2 500 000 (EU VAT paid)



Chantier
2006 (refitted 2018), Fipa Italiana Yachts, Italy



Longueur
32,1m



Largeur
6,7m



Tirant d'eau
2,2m



Tonnage brut
149



Vitesse de croisière
20 knots



Vitesse maximale
26 knots



Autonomie
460 nm



Pavillon
Greece



Position
East Mediterranean



Classe
INSB



Designer extérieur
Maiora



Designer d'intérieur
Roberto del Re



Construction
Hull - GRP, Superstructure - GRP, Deck - Teak



Équipage
5



Invités
12



Cabines
5 (3 × double, 2 × double/twin, 2 × additional berths)



Moteurs
2 × 2 400hp MTU



Propulsion
Twin screw diesel yacht

[Voir le yacht sur le site](#)



PRINCESS L



BURGESS

Discover the difference.
burgessyachts.com



PRINCESS L



BURGESS

Discover the difference.
burgessyachts.com



PRINCESS L



BURGESS

Discover the difference.
burgessyachts.com



PRINCESS L



BURGESS

Discover the difference.
burgessyachts.com



PRINCESS L



BURGESS

Discover the difference.
burgessyachts.com



PRINCESS L

APERÇU.

PRINCESS L is a 32.1m (105.3ft) performance motor yacht built in composite to INSB classification and delivered by Fipa Italiana Yachts in 2006. Exterior design is by Maiora and her interiors are the work of Roberto del Re. Extensively refitted in 2018, she presents very well.

An expansive flybridge has a helm station forward to port and access to the bridge to starboard. Beneath the hardtop there is a lounge with banquette seating either side of a table and aft is a full beam sunpad.

There is open-air dining on the main deck aft and steps leading down to the swim platform and tender and toy garage. Sidedecks lead forward to a large foredeck sunpad.

The main saloon has sofa seating either side with diagonal hardwood flooring and cream leather headlining.

To port there is dining for eight guests and to starboard a passageway leads past the galley to the VIP cabin with en suite and shower room.

She welcomes up to 12 guests in five cabins. On the lower deck there is a full-beam owner's suite aft with his-and-hers en suites sharing a spa bath with shower, a second full-beam double cabin forward with en suite shower and two en suite twin cabins in between, both with an additional berth.

Twin 2,400hp MTU diesel engines give her a top speed of 26 knots, she cruises at 20 knots and has a range of 460nm. Her performance, combined with a draft of just 2.2m (7.2ft) make her ideally suited to island hopping.

Principales caractéristiques

Performance yacht with top speeds of 26 knots

Accommodation for up to 12 guests in five cabins

Thorough technical maintenance program from the Owner

Very good charter record

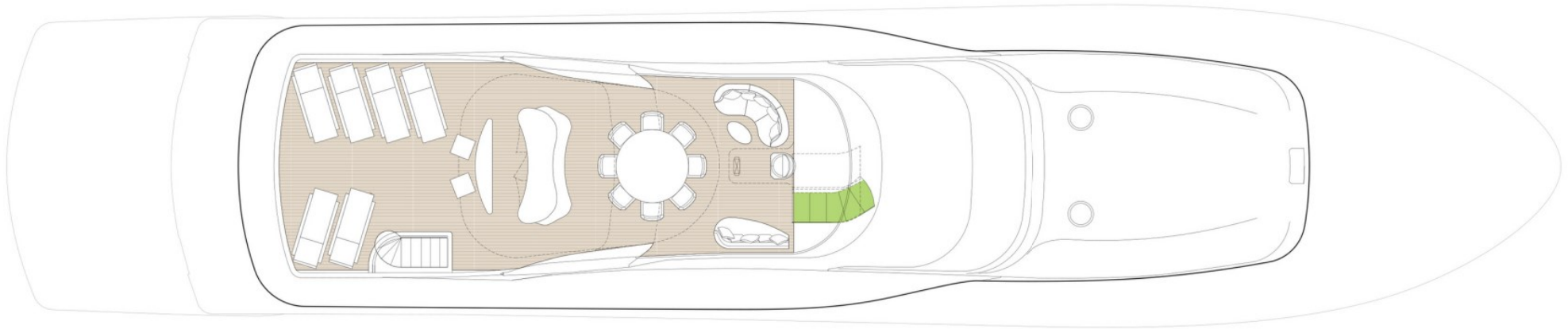
Competitively priced

Home berth in Zea marina (Athens), easy for inspections

Annexes

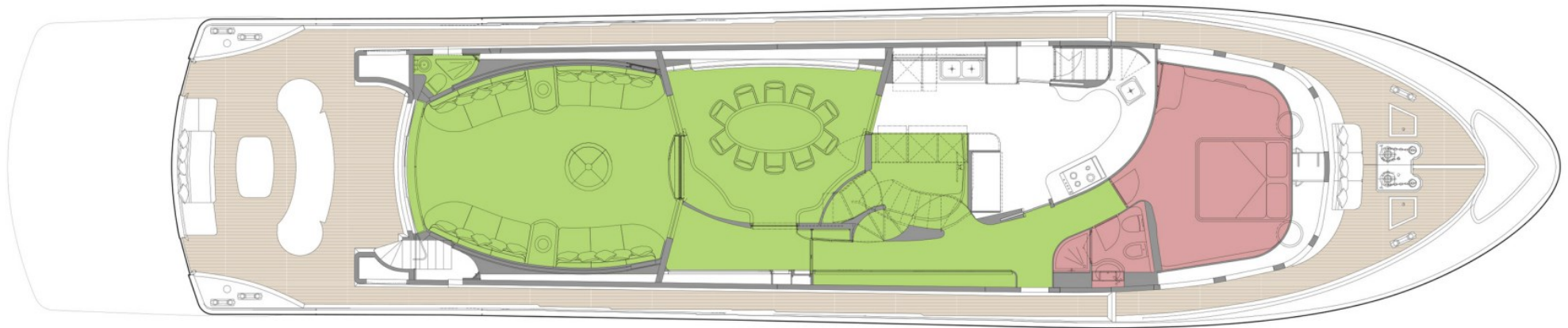
1 x Zar ZF3 70 hp

UPPER DECK



- GUEST AREAS
- MASTER SUITE
- GUEST CABINS
- VIP SUITE

MAIN DECK



■ GUEST AREAS ■ MASTER SUITE ■ GUEST CABINS ■ VIP SUITE

LOWER DECK



■ GUEST AREAS ■ MASTER SUITE ■ GUEST CABINS ■ VIP SUITE

BURGESS

WORLD CLASS. WORLD WIDE.

London +44 20 7766 4300	Monaco +377 97 97 81 21	New York +1 212 223 0410	Miami +1 305 672 0150	Singapore +65 9665 8990	Beverly Hills +1 310 424 5112	Palma +34 971 495 413	Athens +30 210 967 1661
Dubai +971 4 425 5874	Phuket +66 7623 9739	Hong Kong +852 6496 2094	Tokyo +81 46 738 8612	Sydney +61 499 945 557	Mumbai +91 98211 67253	Shanghai +86 187 0898 6800	Rio de Janeiro +55 21 2553-3238
Aspen +1 970 710 2294							

La publicité de ce(s) navire(s) dans des publications imprimées, sur Internet ou sur tout autre support n'est pas autorisée sans l'autorisation écrite préalable de Burgess.
Toutes les informations sont données de bonne foi et sont considérées comme exactes, mais elles ne peuvent être garanties.

Dernière mise à jour : 07 mars 2025