

PLANET NINE



OVERVIEW.

The ultimate expression of yachting capability and status, PLANET NINE was designed by the renowned Tim Heywood and is destined to be regarded as one of the world's foremost explorer yachts.

With massive 2,100GT of volume, PLANET NINE can accommodate up to 12 guests in nine elegant cabins, including a separate owner's deck and a main deck VIP suite. Her hull is ice classed and comes with a superb specification including her MD 600 Explorer helicopter, hangar and helipad.

Although designed for exploration, PLANET NINE's interior includes every facet of modern superyacht luxury. A lift serves all five decks, with the owner enjoying an entire deck that creates a private 3,000 sqft apartment with a full suite, dressing rooms, lounge, study and terrace. A VIP suite occupies much of the bridge deck, creating another private area, and the suite has its own lounge, which can be converted into a cabin.

A forward observation lounge offers panoramic 180-degree views and floor to ceiling glass is a feature across the yacht. In the unlikely event that you require a distraction from the outside world, a cinema lives below the observation room.

The guest deck includes its own entrance and lobby at the stern of the yacht. As you walk to one of five double suites, you will pass the steam room and beach club with its spectacular sea terrace.

Key features

Beach club including steam room at sea level

Private owner's deck

Exercise equipment

Main deck cinema

Helipad & Helicopter MD600 Explorer (daily rate & details available upon request)

Three VIP cabins, including one convertible to two double guest cabins (one with double sofa bed)

Masseuse, personal trainer, fantastic head chef and helicopter pilot part of the crew

Elevator serving lower to sun decks

Jacuzzi on the sun deck

Zero speed stabilisers to reduce any rolling motion

PLANET NINE

Tenders and jetskis



Helideck



Helideck



Arrival on helideck



PLANET NINE

Sun deck bar



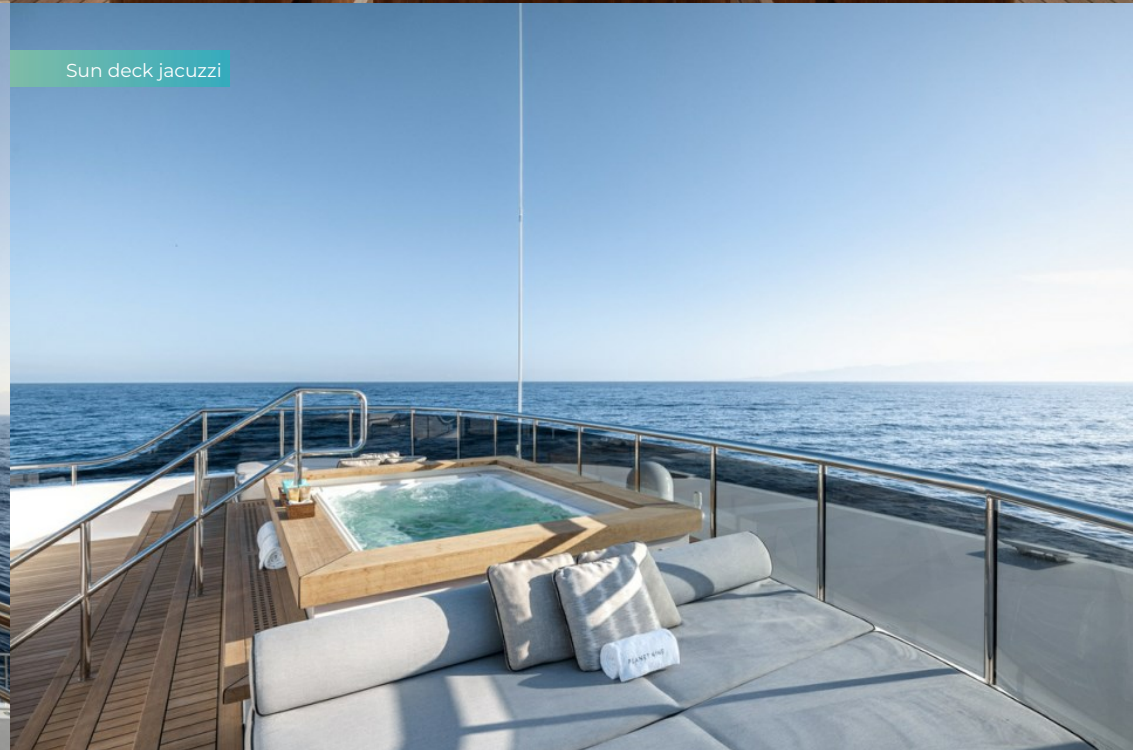
Sun deck dining area



Sun deck aft lounging area



Sun deck jacuzzi



PLANET NINE

Lift on the sun deck



Bridge deck VIP cabin



Bridge deck VIP shower room en suite



Bridge deck VIP exterior lounging area



PLANET NINE

Foredeck lounging area



Upper deck exterior dining and lounging area



Upper deck exterior dining



Upper deck aft



PLANET NINE

Upper deck interior dining and lounging area



Upper deck dining



Upper deck dining



Upper deck study



PLANET NINE

Upper deck observation lounge



Upper deck observation lounge



Upper deck observation lounge



Cinema



PLANET NINE

Main deck forward master suite



Main deck forward master suite



Main deck forward master bathroom en suite



Main deck forward master dressing room



PLANET NINE

Main deck forward master lounge and library



Main deck forward master lounge and library



Main deck forward master library



Main deck aft master lobby and dressing room



PLANET NINE

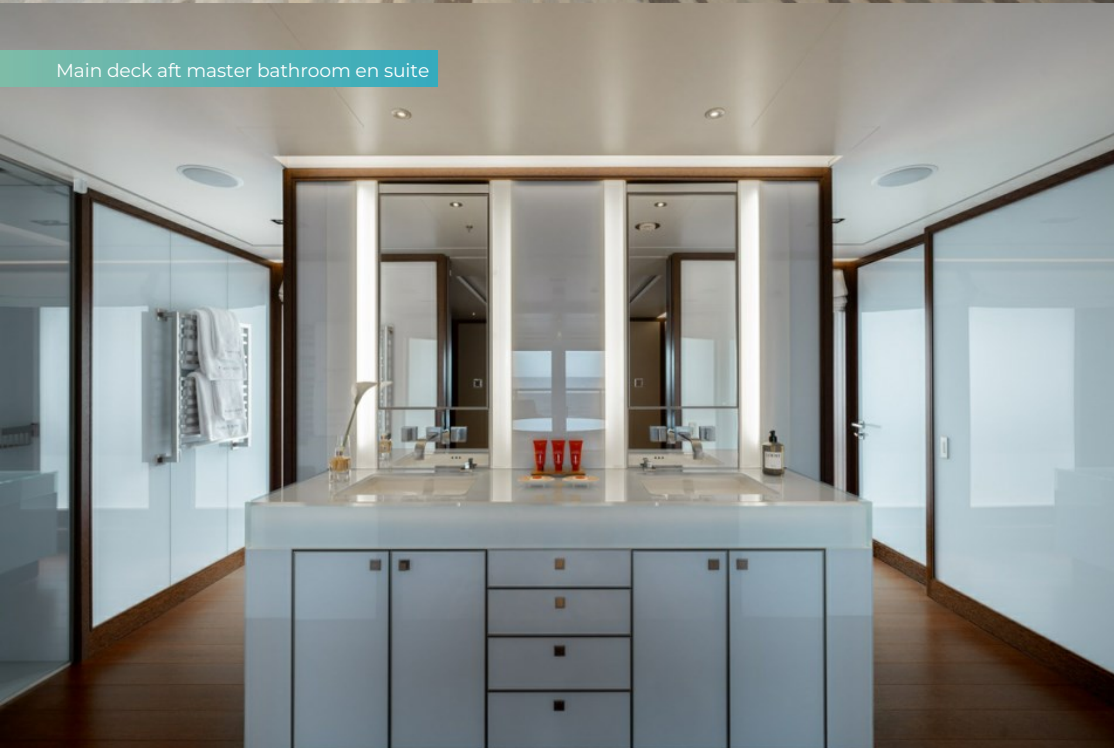
Main deck aft master suite



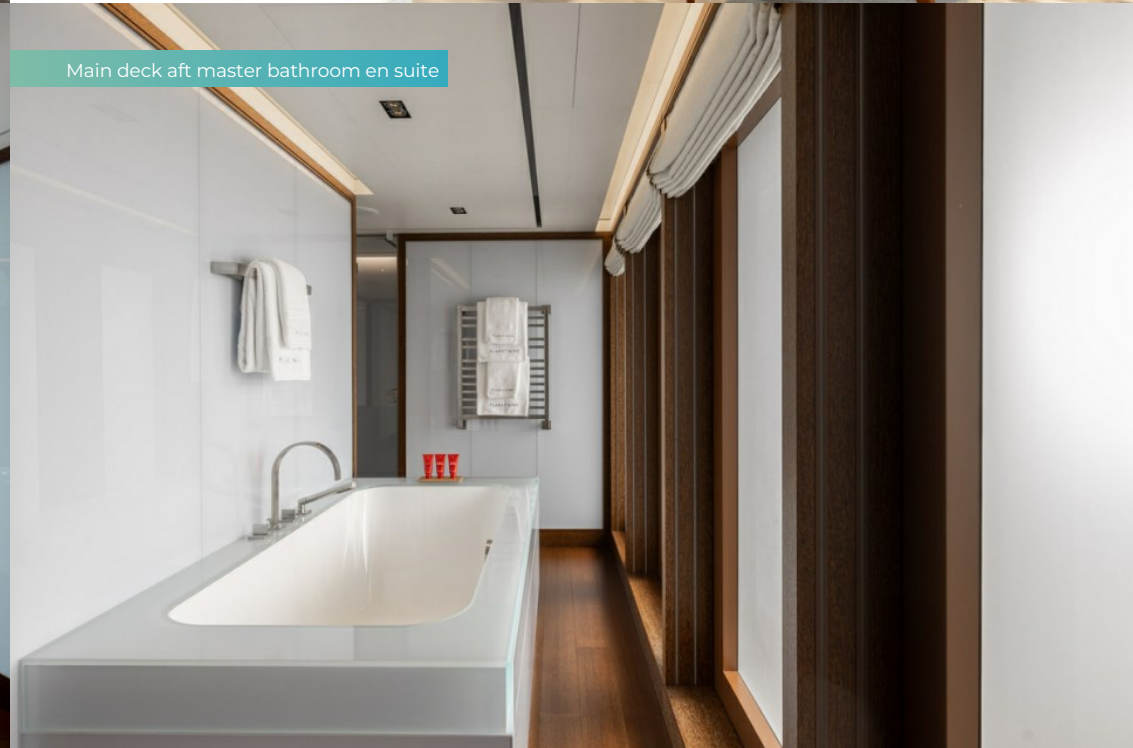
Main deck aft master lounge



Main deck aft master bathroom en suite



Main deck aft master bathroom en suite



PLANET NINE

Main deck aft master balcony



Lift



Lower deck double cabin



Lower deck double cabin shower room en suite



PLANET NINE

Lower deck double cabin



Lower deck double cabin bathroom en suite



Lower deck double cabin



Lower deck double cabin shower room en suite



PLANET NINE

Lower deck convertible double/VIP cabin



Lower deck convertible double/VIP cabin lounge



Lower deck double cabin bathroom en suite



Lower deck staff cabin



PLANET NINE

Lower deck lobby



Beach club and steam room



Beach club and steam room



Beach club



PLANET NINE

Beach club



Boot room and swim platform



Boot room



Watertoys



PLANET NINE

Tenders



Tenders and watertoys



Games on the helideck



PLANET NINE



PLANET NINE

SPECIFICATION.



Length
73.2m (242.7ft)



Built
2018, Admiral, Italy



Interior designer
Mlinaric, Henry & Zervudachi



Beam
13.5m (42ft)



Draft
3.6m (11.8ft)



Gross tonnage
2,189



Cruising speed
13 knots



Maximum speed
15.5 knots



Fuel consumption at cruising speed
350 litres per hour



Engines
2 x 1,800hp Caterpillar



Guests
12



No. of guest cabins
9 (8 x double, 1 x twin)



Crew
22

[View yacht on website](#)

[Watch yacht video](#)



PLANET NINE

TENDERS & TOYS



1 x Towed tender



1 x Limousine tender



3 x Tenders



1 x Deck jacuzzi



3 x Waverunners



4 x SeaBobs



2 x eFoils



2 x Kayaks



4 x Stand up paddleboards



Wakeboard



Kite surfing equipment



Waterskis



Trampoline



Aquapark



Inflatable platform



Inflatable tows



Snorkelling gear



Fishing gear



2 x eBikes

TENDERS 10.2m (33.6ft) center console Rupert RIB | 10.2m (33.6ft) Limousine Rupert RIB | 6m (19.09ft) Rupert Service and Crew RIB | 5.85m (19.2ft, 15 pax) Zodiac Milpro RIB | 4.8m Narwhal SOLAS Rescue boat

TOYS 2 x jetski Sea-Doo Spark | 1 x jetski Kawasaki 310 LX | 4 x SeaBob F5S | 4 x kitesurf equipment | 2 x eFoil boards | 4 x paddleboards | Waterskis and wakeboards | 2 x inflatable canoes | Towable inflatable toys | Inflatable jungle gym & trampoline | Snorkelling equipment | Fishing equipment (small fish only) | 2 x electric bikes + 1 x mountain bike

HELICOPTER MD600 Explorer with 7 seats (daily rate & details available on request - separate agreement to MYBA), Helicopter hangar with hydraulic lift. Dedicated guest cabin for the helicopter pilot.

PLANET NINE

FITNESS & WELLNESS



Basketball court



Free weights



Personal trainer



Rowing machine



Training bench



Treadmill



Upright stationary bike



Yoga mats



Hammam/Steam room



On board masseuse

Flexible set up depending on clients needs - the gym equipment can be moved between the sun deck (good shade) and the beach club/spa area. The crew can run PT sessions to suit most needs. Water rowing machine | Technogym running machine | 2 x exercise bikes | Dumbbells 2kg to 24kg | Swingbell free weights 2,3,6,8 kg | TriaTrainer workout bench | Wall mounted bars and bench slider | Yoga mats. The helipad can be used for CrossFit training, yoga, gym & boxing sessions. They also have a basketball hoop and can set up various games - pickle ball, volleyball, table tennis, football. Spa area with steam room and on board masseuse.

COMMUNICATION & ENTERTAINMENT



Satcom & cellular communications facilities



Wi-Fi internet access



Starlink



Satellite television



Indoor cinema



Speaker systems



Streaming services

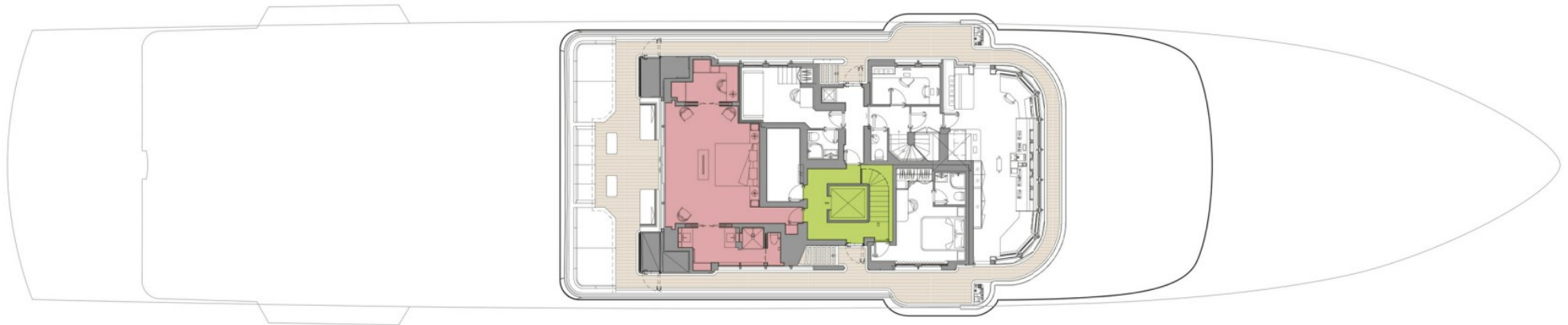
Cinema room on the main deck | Centralised server for movies & music | Apple based system (LAVIE) including iPads, iPhone and iWatch to not only play preferred entertainment but to control the entire on board environment (movie selection, television, best digital audio, lights, blinds control...) | Satellite TV (where geographically available) | Steward call and interactive message boards for menu's/drinks/activities | Satellite & cellular communications facilities | VSAT | Starlink, 4G and 5G extended range

SUN DECK



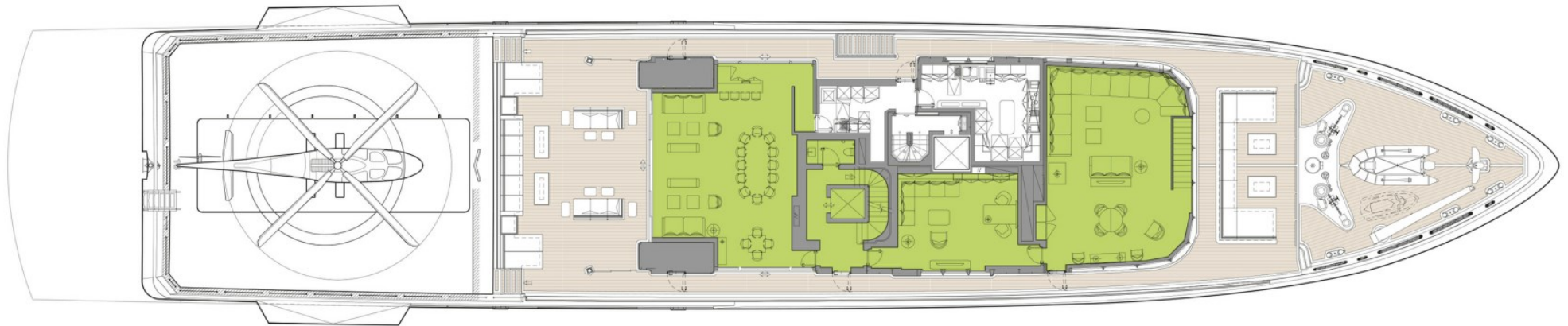
- GUEST AREAS
- MASTER CABIN 1
- MASTER CABIN 2
- VIP SUITE
- GUEST CABINS
- CINEMA
- STAFF CABIN
- JACUZZI
- STEAM ROOM

WHEELHOUSE DECK



- GUEST AREAS
- MASTER CABIN 1
- MASTER CABIN 2
- VIP SUITE
- GUEST CABINS
- CINEMA
- STAFF CABIN
- JACUZZI
- STEAM ROOM

UPPER DECK



- GUEST AREAS
- MASTER CABIN 1
- MASTER CABIN 2
- VIP SUITE
- GUEST CABINS
- CINEMA
- STAFF CABIN
- JACUZZI
- STEAM ROOM

MAIN DECK



- GUEST AREAS
- MASTER CABIN 1
- MASTER CABIN 2
- VIP SUITE
- GUEST CABINS
- CINEMA
- STAFF CABIN
- JACUZZI
- STEAM ROOM

LOWER DECK



- GUEST AREAS
- MASTER CABIN 1
- MASTER CABIN 2
- VIP SUITE
- GUEST CABINS
- CINEMA
- STAFF CABIN
- JACUZZI
- STEAM ROOM

BURGESS

WORLD CLASS. WORLD WIDE.

London +44 20 7766 4300	Monaco +377 97 97 81 21	New York +1 212 223 0410	Miami +1 305 672 0150	Singapore +65 9665 8990	Beverly Hills +1 310 424 5112	Palma +34 971 495 413	Athens +30 210 967 1661
Dubai +971 4 425 5874	Phuket +66 8257 01150	Hong Kong +852 6496 2094	Tokyo +81 46 738 8612	Sydney +61 499 945 557	Mumbai +91 98211 67253	Shanghai +86 159 0162 1898	Rio de Janeiro +55 21 2553-3238
		Aspen +1 970 710 2294	Guernsey +44 1481 735360	Palm Beach +1 561 973 2768			

Advertising of these vessel(s) in printed publications, on the internet or in any other medium is not permitted without prior written permission from Burgess. All particulars are given in good faith and are believed correct but they cannot be guaranteed.

Last updated: 24 June 2026