

# PLANET NINE

---



PLANET NINE

# APERÇU.

The ultimate expression of yachting capability and status, PLANET NINE was designed by the renowned Tim Heywood and is destined to be regarded as one of the world's foremost explorer yachts.

With massive 2,100GT of volume, PLANET NINE can accommodate up to 12 guests in nine elegant cabins, including a separate owner's deck and a main deck VIP suite. Her hull is ice classed and comes with a superb specification including her MD 600 Explorer helicopter, hangar and helipad.

Although designed for exploration, PLANET NINE's interior includes every facet of modern superyacht luxury. A lift serves all five decks, with the owner enjoying an entire deck that creates a private 3,000 sqft apartment with a full suite, dressing rooms, lounge, study and terrace. A VIP suite occupies much of the bridge deck, creating another private area, and the suite has its own lounge, which can be converted into a cabin.

A forward observation lounge offers panoramic 180-degree views and floor to ceiling glass is a feature across the yacht. In the unlikely event that you require a distraction from the outside world, a cinema lives below the observation room.

The guest deck includes its own entrance and lobby at the stern of the yacht. As you walk to one of five double suites, you will pass the steam room and beach club with its spectacular sea terrace.

## Principales caractéristiques

---

Beach club including steam room at sea level

---

Private owner's deck

---

Exercise equipment

---

Main deck cinema

---

Helipad & Helicopter MD600 Explorer (daily rate & details available upon request)

---

Three VIP cabins, including one convertible to two double guest cabins (one with double sofa bed)

---

Masseuse, personal trainer, fantastic head chef and helicopter pilot part of the crew

---

Elevator serving lower to sun decks

---

Jacuzzi on the sun deck

---

Zero speed stabilisers to reduce any rolling motion

---



## PLANET NINE

Upper deck main lounge



Upper deck main lounge



Upper deck lounge



Upper deck observation lounge





## PLANET NINE

Main deck cinema



Main deck master cabin



Main deck master cabin



Main deck master cabin library





## PLANET NINE

Main deck master cabin foyer



Master bathroom en suite



Main deck lounge



Main deck lounge





## PLANET NINE

Main deck VIP cabin



Wheelhouse deck second VIP cabin



Wheelhouse deck second VIP cabin



Wheelhouse deck aft





## PLANET NINE

Lower deck guest cabin/convertible VIP



Lower deck guest cabin/convertible VIP



Lower deck double cabin



Lower deck double cabin





## PLANET NINE

Lower deck double bathroom en suite



Lower deck twin staff cabin



Sun deck dining area



Sun deck aft





## PLANET NINE

Sun deck jacuzzi



Steam room and gym



Beach club leading to guest cabins



Beach club leading to guest cabins





PLANET NINE

Tender



Cruising



BURGESS

Discover the difference.  
[burgessyachts.com](http://burgessyachts.com)





PLANET NINE

# SPÉCIFICATIONS.



Longueur  
73,2m



Chantier  
2018, Admiral, Italy



Designer d'intérieur  
Mlinaric, Henry & Zervudachi



Largeur  
12,8m



Tirant d'eau  
3,6m



Tonnage brut  
2 100



Vitesse de croisière  
14 knots



Vitesse maximale  
16 knots



Consommation de carburant en vitesse de croisière  
500 litres par heure



Moteurs  
2 x 1 800hp Caterpillar



Invités  
12



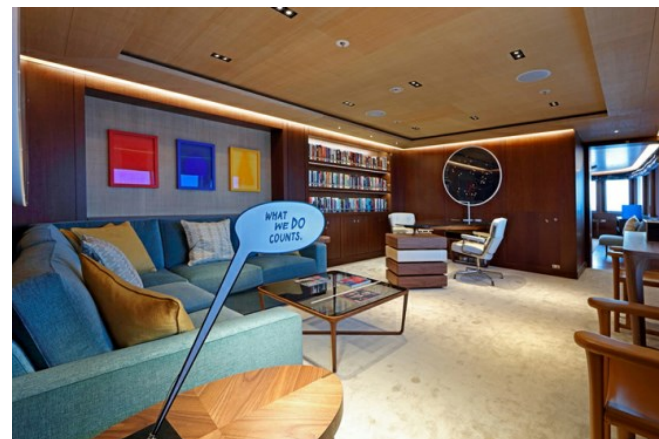
Nb de cabines invités  
9 (8 x double, 1 x twin)



Équipage  
20

[Voir le yacht sur le site](#)

[Regarder la vidéo du yacht](#)



BURGESS

Discover the difference.  
burgessyachts.com





## Annexes & jeux nautiques



1 x Limousine tender



2 x Tenders



1 x Deck jacuzzi



Anti-jellyfish pool



Climbing wall



Trampoline



Aquapark



Inflatable platform



3 x Waverunners



2 x SeaBobs



2 x eFoil



2 x Kayaks



4 x Stand up paddleboards



Wakeboard



Kite surfing equipment



Waterskis



Inflatable tows



Fishing gear



Snorkelling gear

TENDERS 9.7m (31.8ft) centre console Rupert RIB (stored on main aft deck) | 9.7m (31.8ft) Limousine Rupert RIB (stored on main aft deck) | 6m (19.6ft) Rupert Service/crew RIB (stored in lower deck garage, port side) | 5.5m (18ft) RIB tender Zodiac Milpro | 5m (16.6ft) crew rescue boat (stored on the foredeck)

TOYS 2 x jetski Sea-Doo Spark | 1 x jetski Kawasaki 310 LX | 2 x SeaBob F5S | 4 x kitesurf equipment | 2 x eFoil boards | 4 x paddleboards | Waterskis and wakeboards | 2 x inflatable canoes | Towable inflatable toys | Inflatable jungle gym & trampoline | Snorkelling gear | Fishing equipment (small fish only) | 2 x electric bikes | 1 x mountain bike

HELICOPTER MD600 Explorer with 7 seats (daily rate & details available on request - separate agreement to MYBA). Helicopter hangar with hydraulic lift. Dedicated guest cabin for the helicopter pilot.



## Remise en forme & bien-être

---



Basketball court



Free weights



Personal trainer



Rowing machine



Training bench



Treadmill



Upright stationary bike



Yoga mats



On board masseuse



Sauna

Flexible set up depending on clients needs - the gym equipment can be moved between the sun deck (good shade) and the beach club/spa area. The crew can run PT sessions to suit most needs.

Water rowing machine | Technogym running machine | 2 x exercise bikes | Dumbbells 2kg to 24kg | Swingbell free weights 2,3,6,8 kg | TriaTrainer workout bench | Wall mounted bars and bench slider | Yoga mats. The helipad can be used for CrossFit training, yoga, gym & boxing sessions. They also have a basketball hoop and can set up various games - pickle ball, volleyball, table tennis, football. Spa area with steam room and on board masseuse

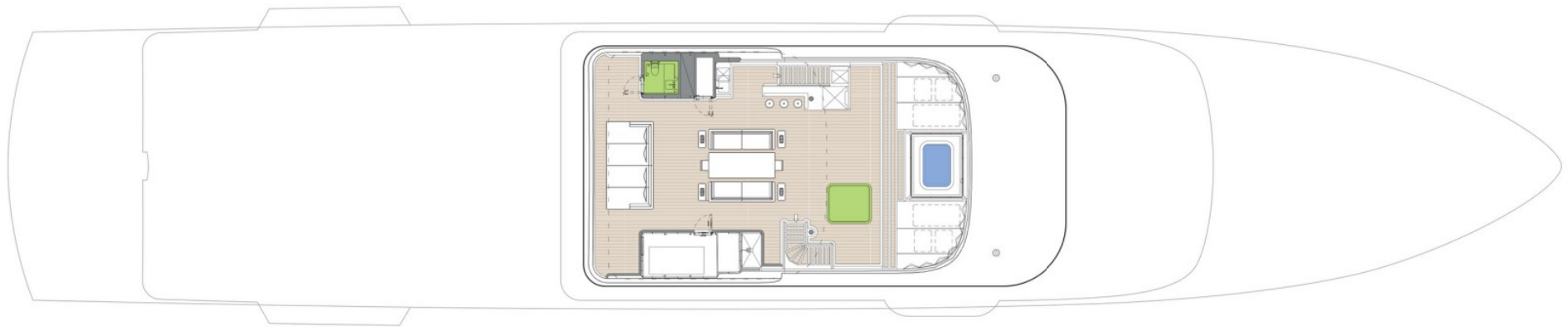
## Communication et divertissement

---

Cinema room on the main deck | Centralised server for movies & music | Apple based control system (Lavie) including iPads, iPhone and iWatch (movie selection, television, SAT TV | Best digital audio, lights, blinds control, etc) | Apple iWatch remote | 4k video supported | iPad remote | iPhone remote | Apple Airplay | Google Chromecast | Satellite television channels | Public playlist/party mode | KNX integration | YouTube integrated | CCTV integration | Kartina TV integrated | Steward call and interactive message boards for menu's/drinks/activities | Satellite & cellular communications facilities | VSAT | Wi-Fi internet



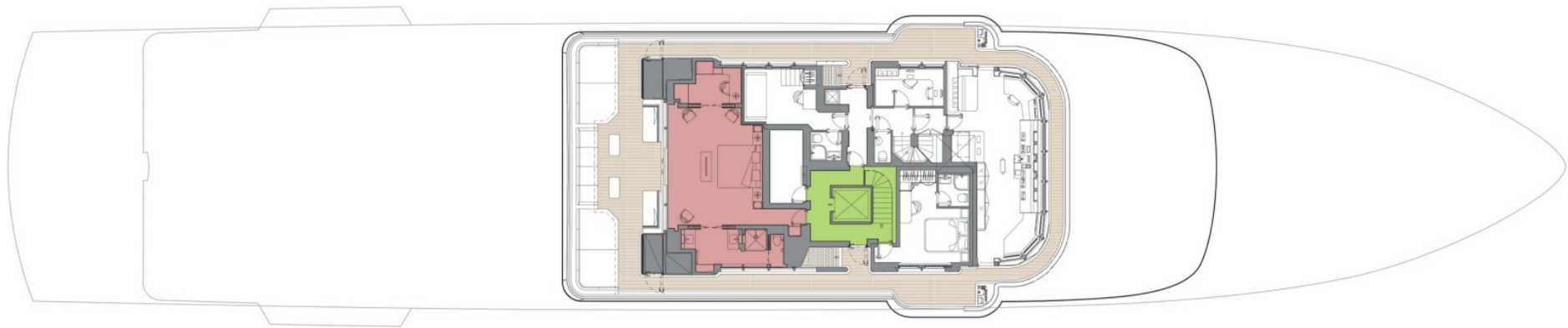
# SUN DECK



 GUEST AREAS  OWNER'S SUITE  VIP SUITE  GUEST CABINS  OWNER'S OFFICE  CINEMA  JACUZZI  STEAM ROOM



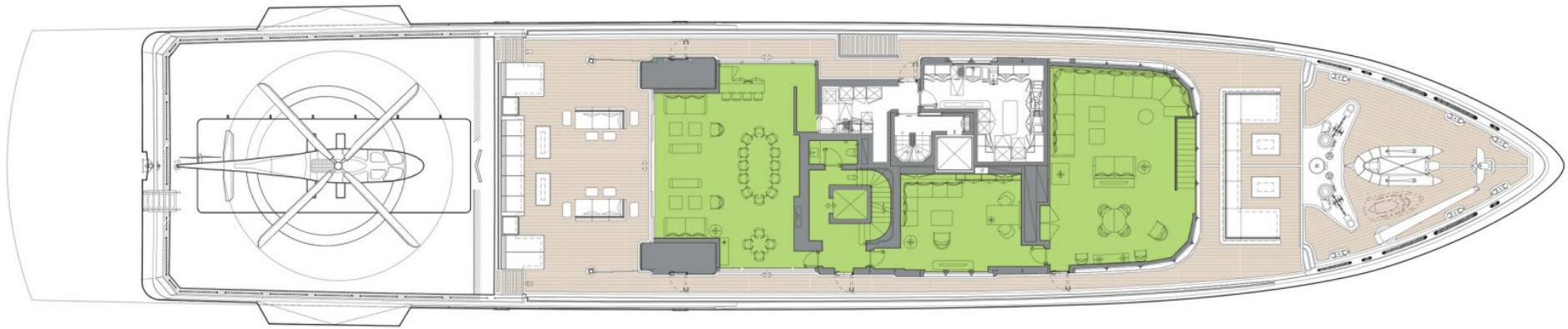
# WHEELHOUSE DECK



 GUEST AREAS  OWNER'S SUITE  VIP SUITE  GUEST CABINS  OWNER'S OFFICE  CINEMA  JACUZZI  STEAM ROOM



# UPPER DECK



GUEST AREAS
  OWNER'S SUITE
  VIP SUITE
  GUEST CABINS
  OWNER'S OFFICE
  CINEMA
  JACUZZI
  STEAM ROOM



# MAIN DECK



GUEST AREAS
  OWNER'S SUITE
  VIP SUITE
  GUEST CABINS
  OWNER'S OFFICE
  CINEMA
  JACUZZI
  STEAM ROOM



# LOWER DECK



GUEST AREAS
  OWNER'S SUITE
  VIP SUITE
  GUEST CABINS
  OWNER'S OFFICE
  CINEMA
  JACUZZI
  STEAM ROOM



# BURGESS

# WORLD CLASS. WORLD WIDE.

London	Monaco	New York	Miami	Singapore	Beverly Hills	Palma	Athens
+44 20 7766 4300	+377 97 97 81 21	+1 212 223 0410	+1 305 672 0150	+65 9665 8990	+1 310 424 5112	+34 971 495 413	+30 210 967 1661
Dubai	Phuket	Hong Kong	Tokyo	Sydney	Mumbai	Shanghai	
+971 4 425 5874	+66 7623 9739	+852 6496 2094	+81 46 738 8612	+61 499 945 557	+91 98211 67253	+86 187 0898 6800	

La publicité de ce(s) navire(s) dans des publications imprimées, sur Internet ou sur tout autre support n'est pas autorisée sans l'autorisation écrite préalable de Burgess.  
Toutes les informations sont données de bonne foi et sont considérées comme exactes, mais elles ne peuvent être garanties.

Dernière mise à jour : 23 avril 2024