

PISCES



OVERVIEW.

PISCES is set up for you and your guests to enjoy time on board, whatever their passion, pastime or age. Still gleaming from her 2021 interior and exterior refit, she has a tender garage packed full of toys and equipment, from towable inflatables, scuba equipment, surfboards and bodyboards to jetskis, SeaBobs, kayaks, kiteboards, windsurfers and even an E-foil, with her inflatable dock and pool (with jellyfish nets) there is plenty for everyone to enjoy time off PISCES. On board, there is no stopping you either, whether you want to drive eco-friendly golf balls (that are biodegradable and contain fish food) from the sun deck, relax on one of many sun lounge areas or have a run on the yacht's treadmill you will not be at a loss for ways to keep you and your group entertained.

PISCES makes a fantastic choice for those with young children in the party; she can be made safe for children with the use of the nets and gates, keeping your loved ones secure and happy. She also has an air and water purification system and all the guest suites are equipped with satellite and Apple TV with individually managed climate zones for everyone's comfort on board.

An elevator runs from the guest accommodation on the lower deck to all three decks above; enabling you and your guests to effortlessly access any of the decks for the delights that PISCES' chef has in store for you; whether it's breakfast, lunch or dinner or snacks when you fancy them, you can expect mouth-watering cuisine anywhere on board, delivered by PISCES' ever-attentive crew. There is a formal dining area in the main deck saloon and a relaxed dining area on the aft deck. On the upper deck is the shaded al fresco formal dining area while the sun deck offers a relaxing lounge and bar area.

PISCES can host 11 guests in five beautiful and tastefully decorated guest suites. On the main deck, the full-beam master suite is forward and has a private office and lounge area, a king-sized berth and a full-beam en suite bathroom with bath, separate shower compartment and dressing room. On the lower deck, there are two double VIP suites both with king-sized berths, there's a fourth double cabin and a twin-berth cabin with a pullman berth; all guest cabins have en suite marble bathrooms.

From her stunning blue hull to the large bar area on her large sun deck, the 46m 151ft PISCES offers you a yacht to enjoy every aspect of being on the water.

Key features

Recently refitted

Wheelchair friendly

Exercise equipment

Elevator servicing all decks

Jacuzzi on the sun deck

Zero speed stabilizers to reduce any rolling motion while at anchor

PISCES

SPECIFICATION.



Length
46m (150.9ft)



Built
2011 (refitted 2021), Delta Marine, United States Of America



Interior designer
Jonathan Quinn Barnett/Pembroke & Ives



Beam
9.4m (30.8ft)



Draft
2.7m (8.9ft)



Gross tonnage
499



Cruising speed
12 knots



Maximum speed
16 knots



Fuel consumption at cruising speed
216 litres per hour



Engines
2 x 2,250hp Caterpillar



Guests
11



No. of guest cabins
5 (4 x double, 1 x twin)



Crew
10

[View yacht on website](#)

[Watch yacht video](#)

PISCES

EQUIPMENT.

Tenders & toys

- | | | | | |
|--|--|---|---|--|
|  1 x Tender |  1 x Deck jacuzzi |  Anti-jellyfish pool |  RYA training centre for jetskis & waverunners |  2 x Waverunners |
|  2 x SeaBobs |  1 x eFoil |  2 x Kayaks |  2 x Stand up paddleboards |  Wakeboard |
|  Surfboard |  Waterskis |  Inflatable tows |  Scuba diving equipment |  Snorkelling gear |

Fitness & wellness



Free weights



Jump ropes



Resistance bands



Training bench

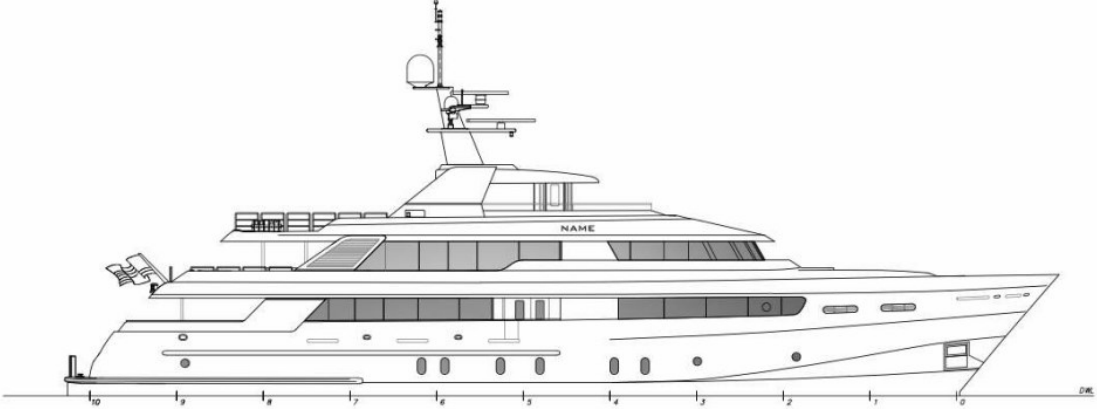


Treadmill

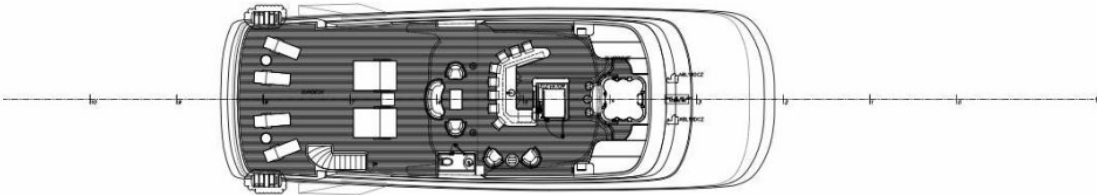


Yoga mats

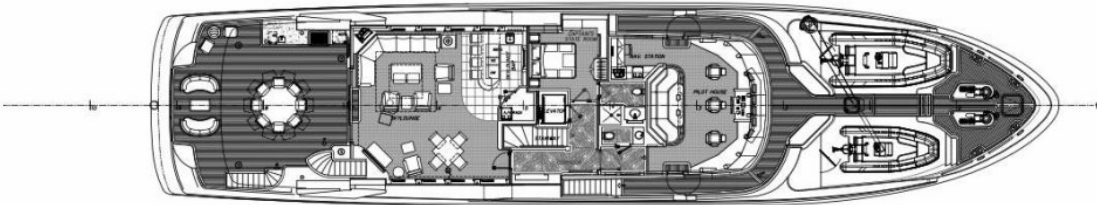




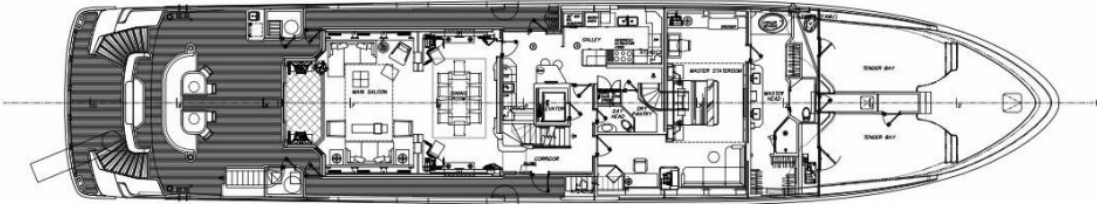
OUTBO PROFILE



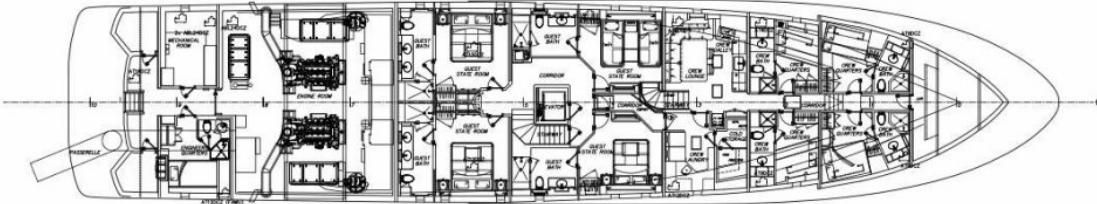
FLYBRIDGE DECK



UPPER DECK



MAIN DECK



LOWER DECK

BURGESS

WORLD CLASS. WORLD WIDE.

London +44 20 7766 4300	Monaco +377 97 97 81 21	New York +1 212 223 0410	Miami +1 305 672 0150	Singapore +65 9665 8990	Beverly Hills +1 310 424 5112	Palma +34 971 495 413	Athens +30 210 967 1661
	Dubai +971 4 425 5874	Phuket +66 7623 9739	Hong Kong +852 6496 2094	Tokyo +81 46 738 8612	Sydney +61 499 945 557	Mumbai +91 98211 67253	

Advertising of these vessel(s) in printed publications, on the internet or in any other medium is not permitted without prior written permission from Burgess. All particulars are given in good faith and are believed correct but they cannot be guaranteed.

Last updated: 01 March 2024